

Johann Gottlieb Graun

**Suite
a-moll**

(Graun WV C:XI:16)

Violoncello/Violone

herausgegeben

von

Werner Jaksch

Suite a-moll

J. G. Graun

Ouverture

Violoncello / Violone

Measures 1-5 of the Overture. The music is in the bass clef with a common time signature (C). It begins with a half note G2, followed by a quarter note F2, and then a series of eighth notes: G2, A2, B2, C3, D3, E3, F3, G3. A triplet of eighth notes (G3, A3, B3) is marked with a '3' above it. The piece concludes with a half note G#2.

Measures 6-9. Measure 6 starts with a quarter note G2, followed by a quarter note F2, and a quarter note G2. Measure 7 contains a half note G2. Measure 8 features a triplet of eighth notes (G3, A3, B3) marked with a '3'. Measure 9 continues with a quarter note G2, a quarter note F2, and a quarter note G2.

Measures 10-13. Measure 10 begins with a quarter note G2, followed by a quarter note F2, and a quarter note G2. Measure 11 contains a half note G2. Measure 12 features a triplet of eighth notes (G3, A3, B3) marked with a '3'. Measure 13 continues with a quarter note G2, a quarter note F2, and a quarter note G2.

Measures 14-17. Measure 14 starts with a quarter note G2, followed by a quarter note F2, and a quarter note G2. Measure 15 contains a half note G2. Measure 16 features a triplet of eighth notes (G3, A3, B3) marked with a '3'. Measure 17 continues with a quarter note G2, a quarter note F2, and a quarter note G2.

Measures 18-29. Measure 18 starts with a quarter note G2, followed by a quarter note F2, and a quarter note G2. Measure 19 contains a half note G2. Measure 20 features a triplet of eighth notes (G3, A3, B3) marked with a '3'. Measure 21 continues with a quarter note G2, a quarter note F2, and a quarter note G2. Measure 22 contains a half note G2. Measure 23 features a triplet of eighth notes (G3, A3, B3) marked with a '3'. Measure 24 continues with a quarter note G2, a quarter note F2, and a quarter note G2. Measure 25 contains a half note G2. Measure 26 features a triplet of eighth notes (G3, A3, B3) marked with a '3'. Measure 27 continues with a quarter note G2, a quarter note F2, and a quarter note G2. Measure 28 contains a half note G2. Measure 29 features a triplet of eighth notes (G3, A3, B3) marked with a '3'.

Measures 30-33. Measure 30 starts with a quarter note G2, followed by a quarter note F2, and a quarter note G2. Measure 31 contains a half note G2. Measure 32 features a triplet of eighth notes (G3, A3, B3) marked with a '3'. Measure 33 continues with a quarter note G2, a quarter note F2, and a quarter note G2.

Measures 34-37. Measure 34 starts with a quarter note G2, followed by a quarter note F2, and a quarter note G2. Measure 35 contains a half note G2. Measure 36 features a triplet of eighth notes (G3, A3, B3) marked with a '3'. Measure 37 continues with a quarter note G2, a quarter note F2, and a quarter note G2.

Measures 38-41. Measure 38 starts with a quarter note G2, followed by a quarter note F2, and a quarter note G2. Measure 39 contains a half note G2. Measure 40 features a triplet of eighth notes (G3, A3, B3) marked with a '3'. Measure 41 continues with a quarter note G2, a quarter note F2, and a quarter note G2.

Measures 42-45. Measure 42 starts with a quarter note G2, followed by a quarter note F2, and a quarter note G2. Measure 43 contains a half note G2. Measure 44 features a triplet of eighth notes (G3, A3, B3) marked with a '3'. Measure 45 continues with a quarter note G2, a quarter note F2, and a quarter note G2.

Measures 46-61. Measure 46 starts with a quarter note G2, followed by a quarter note F2, and a quarter note G2. Measure 47 contains a half note G2. Measure 48 features a triplet of eighth notes (G3, A3, B3) marked with a '3'. Measure 49 continues with a quarter note G2, a quarter note F2, and a quarter note G2. Measure 50 contains a half note G2. Measure 51 features a triplet of eighth notes (G3, A3, B3) marked with a '3'. Measure 52 continues with a quarter note G2, a quarter note F2, and a quarter note G2. Measure 53 contains a half note G2. Measure 54 features a triplet of eighth notes (G3, A3, B3) marked with a '3'. Measure 55 continues with a quarter note G2, a quarter note F2, and a quarter note G2. Measure 56 contains a half note G2. Measure 57 features a triplet of eighth notes (G3, A3, B3) marked with a '3'. Measure 58 continues with a quarter note G2, a quarter note F2, and a quarter note G2. Measure 59 contains a half note G2. Measure 60 features a triplet of eighth notes (G3, A3, B3) marked with a '3'. Measure 61 continues with a quarter note G2, a quarter note F2, and a quarter note G2.

Measures 62-65. Measure 62 starts with a quarter note G2, followed by a quarter note F2, and a quarter note G2. Measure 63 contains a half note G2. Measure 64 features a triplet of eighth notes (G3, A3, B3) marked with a '3'. Measure 65 continues with a quarter note G2, a quarter note F2, and a quarter note G2.

Measures 66-69. Measure 66 starts with a quarter note G2, followed by a quarter note F2, and a quarter note G2. Measure 67 contains a half note G2. Measure 68 features a triplet of eighth notes (G3, A3, B3) marked with a '3'. Measure 69 continues with a quarter note G2, a quarter note F2, and a quarter note G2.

70

74 **Trio**

78

83

87

105 **Tutti**

109

114

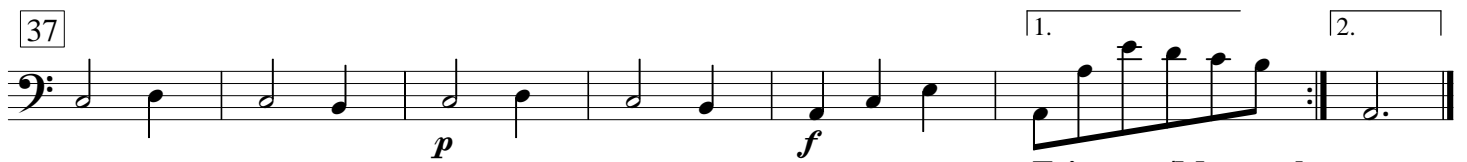
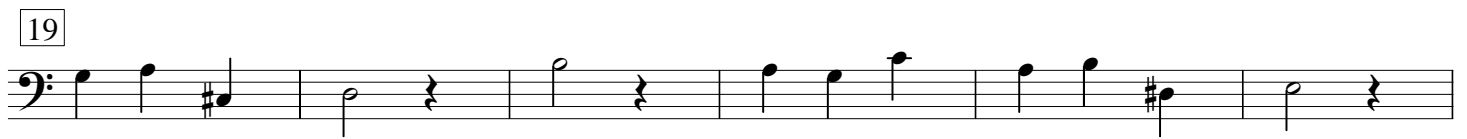
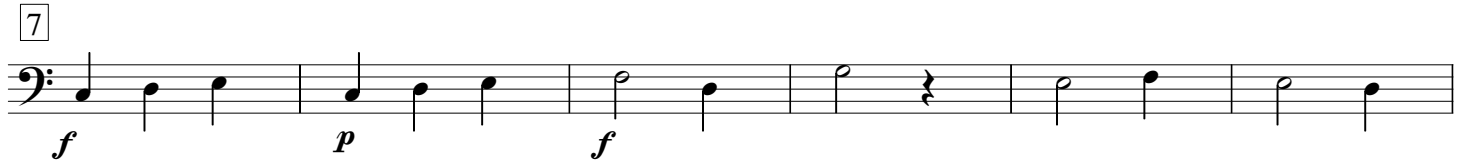
118

122

127

132

1. Menuet



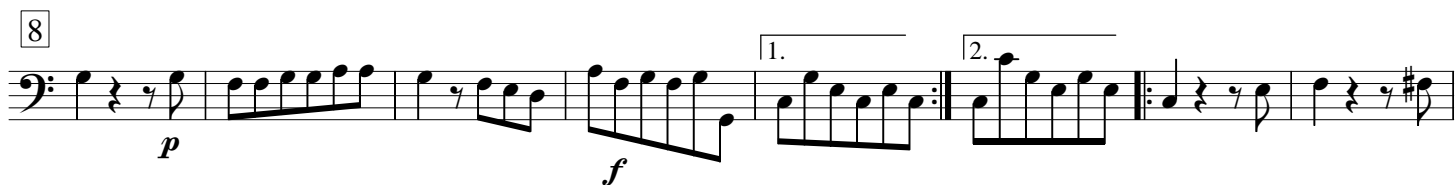
2. Duetto tacet

1. 2.
Trio tacet/Menuet da capo

3. (Menuet)



4. Sarabande



5. Aria 1

poco Allegro



Aria 2 tacet/Aria 1 da capo

6. Bouree



Duetto tacet/Bouree dacapo

7. Louree



8. Aria 3

Allegro



11



21



31



41



51



Aria 4



11



21



31



Aria 3 da capo

9. Chaconne

Bass clef, 3/4 time signature. First staff of music with notes: C4, C4, C4, G3, G3, C4, G3, G3, C4, C4, D4, E4, D4, C4, B3, A3, G3, F3, E3.

8

Second staff of music, starting with a rhythmic figure of eighth notes: C4, D4, E4, F4, G4, F4, E4, D4, C4. It then continues with the main melody from the first staff.

16

Third staff of music, starting with a measure containing a fermata over 13 eighth notes, followed by the main melody.

36

Fourth staff of music, featuring the main melody with some chromatic alterations.

42

Fifth staff of music, featuring sixteenth-note patterns and trills.

47

Sixth staff of music, continuing with intricate sixteenth-note passages.

52

Seventh staff of music, ending with a fermata over 13 eighth notes.

71

Eighth staff of music, featuring chords and rests.

79

Ninth staff of music, ending with a fermata over 17 eighth notes.

101

Tenth staff of music, featuring continuous sixteenth-note patterns.

105

Eleventh staff of music, continuing with sixteenth-note figures.

109



113



119



125



153



160



166



171



176



184



10. Menuet

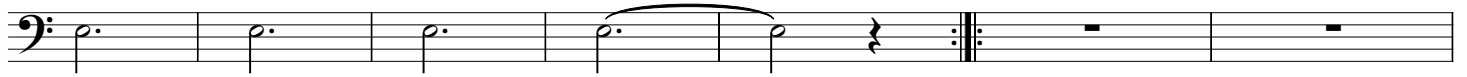
Allegro



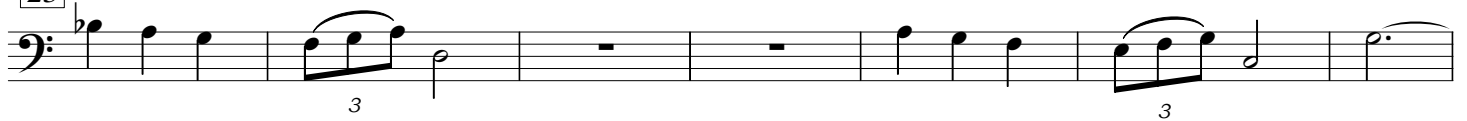
9



16



23



30



37



43



Trio tacet/Menuet da capo