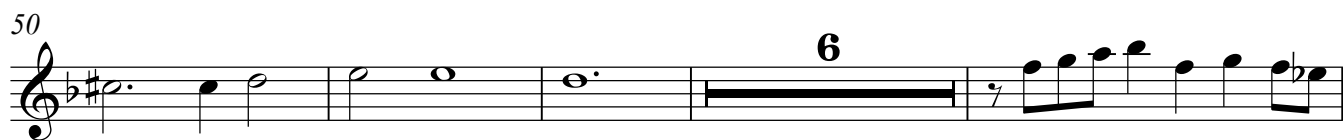
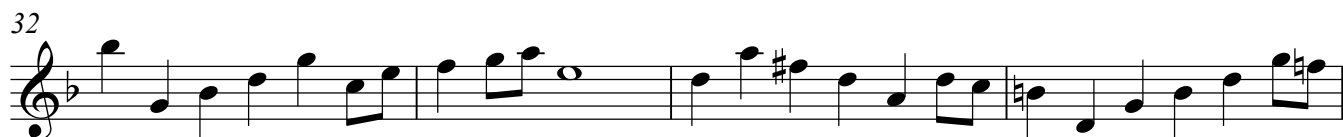
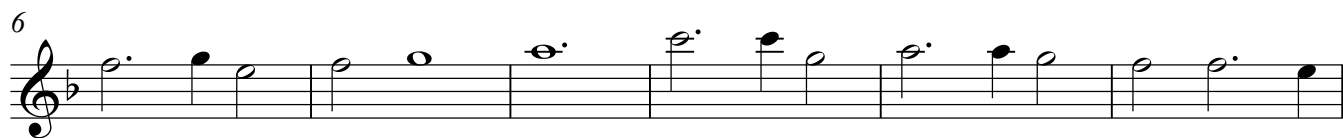


Violin

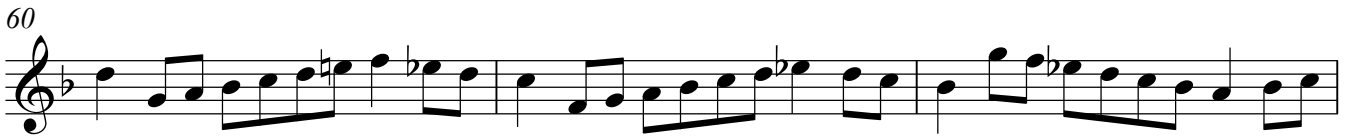
Sonata a Quattro

(from Sacro-Profanus Concentus Musicus, (1662))

Johann Heinrich Schmelzer (c.1620–23 –1680)



60



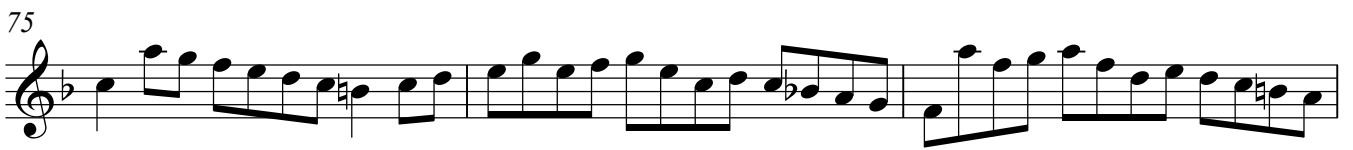
63



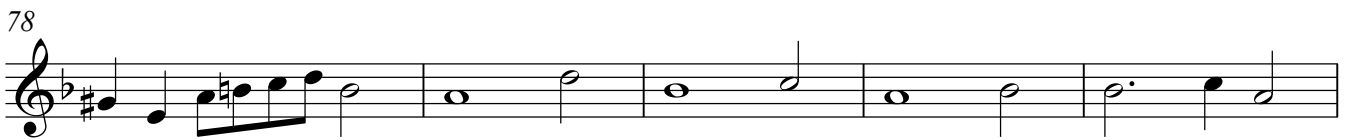
72



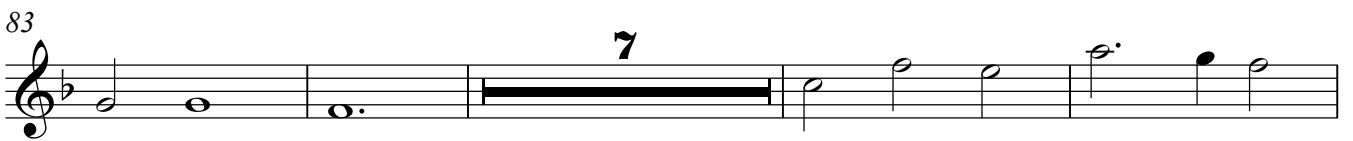
75



78



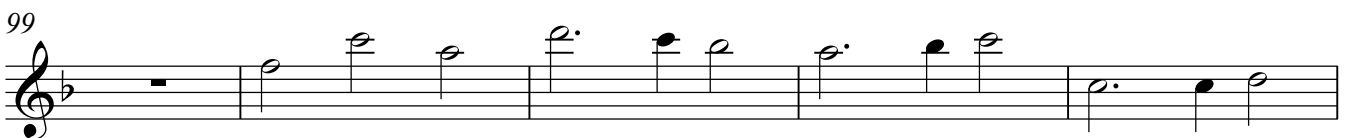
83



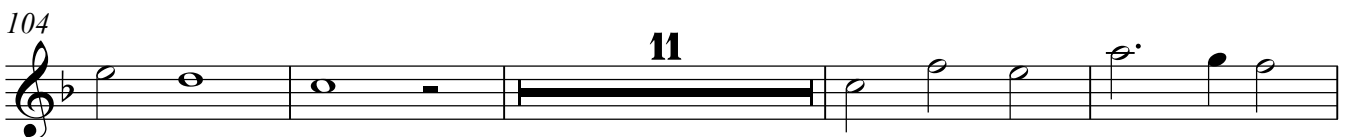
94



99



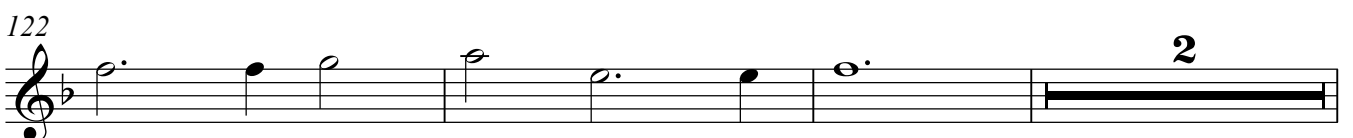
104



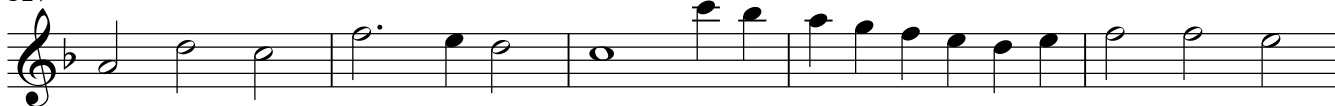
119



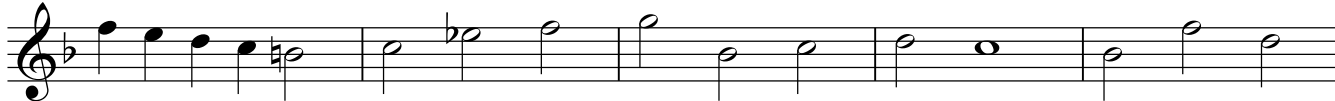
122



127



132



137



142



146



150



155



159



161



Viola 1

Sonata a Quattro

(from Sacro-Profanus Concentus Musicus, (1662))

Johann Heinrich Schmelzer (c.1620–23 –1680)



6



11



17



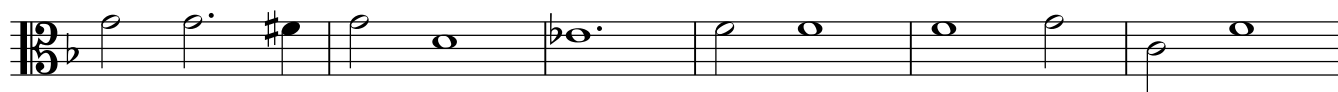
22



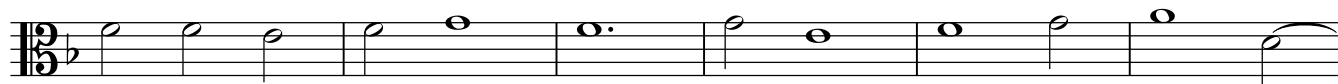
30



39



45



51



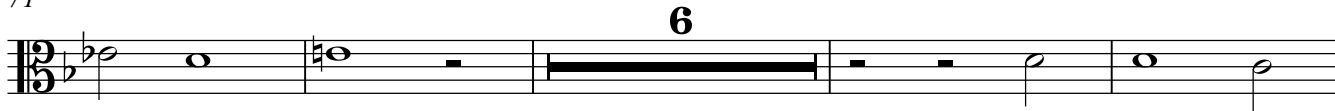
56



66



71



81



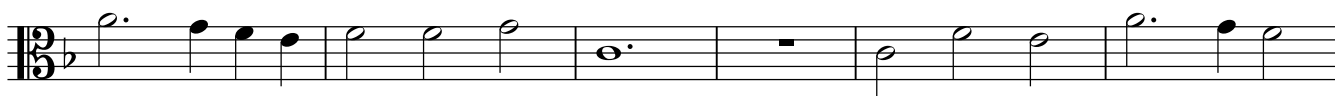
88



93



98



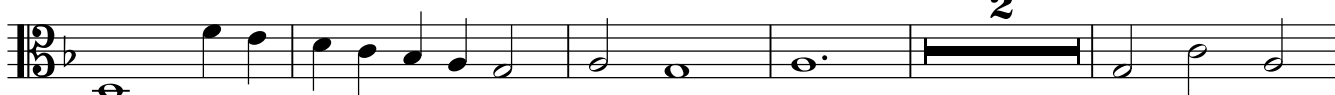
104



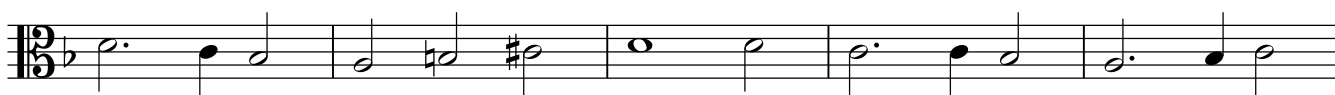
108



113



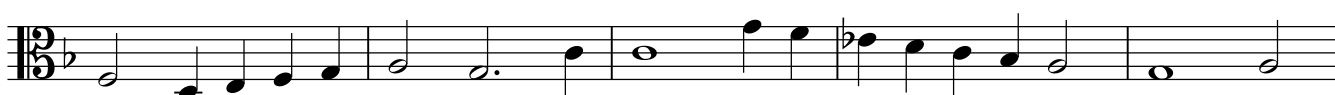
120



125



130



135



141



149



158



161



Viola 2

Sonata a Quattro

(from Sacro-Profanus Concentus Musicus, (1662))

Johann Heinrich Schmelzer (c.1620–23 –1680)



6



12



18



26



31



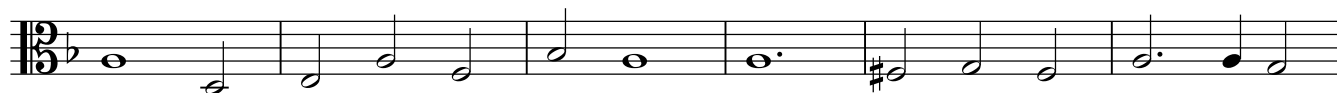
39



44



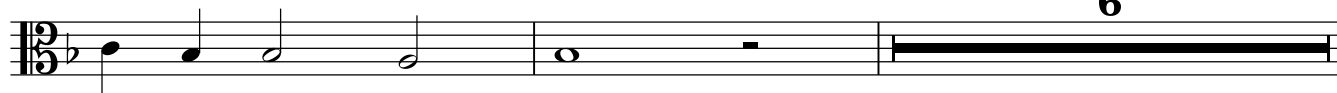
49



55



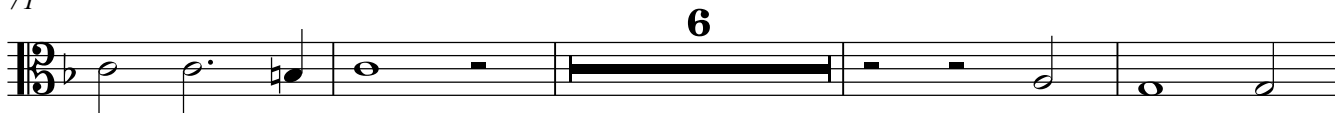
58



66



71



81



87



92



98



103



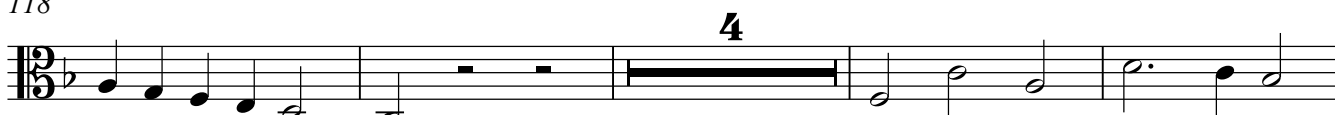
108



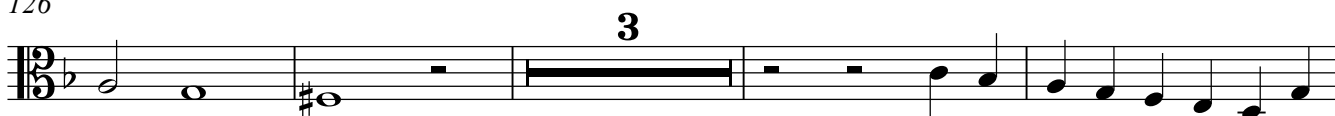
113



118



126



133



138



143



150



159



Violoncello

Sonata a Quattro

(from Sacro-Profanus Concentus Musicus, (1662))

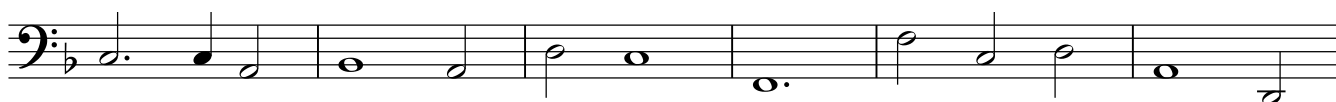
Johann Heinrich Schmelzer (c.1620–23 –1680)



7



13



19



26



33



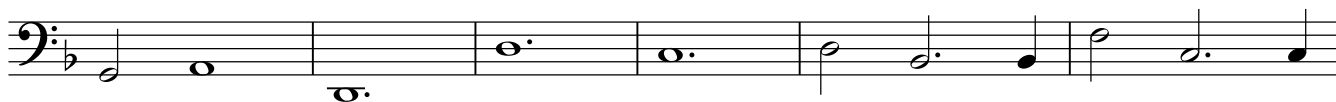
40



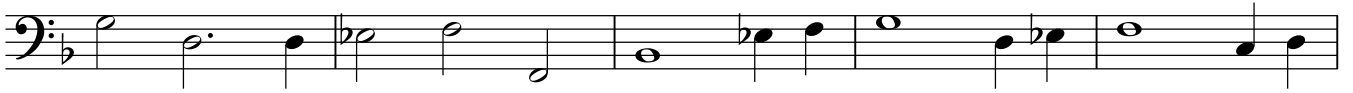
45



51



57



62



68



73



79



85



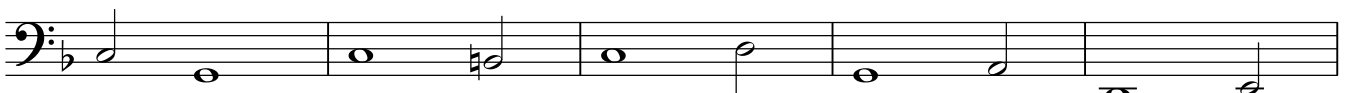
94



99



104



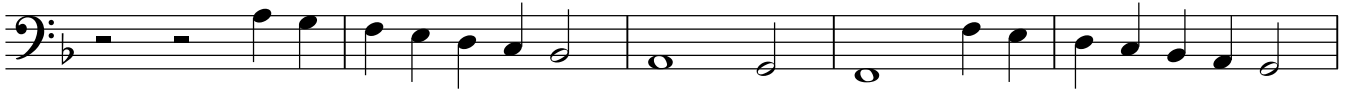
109



113



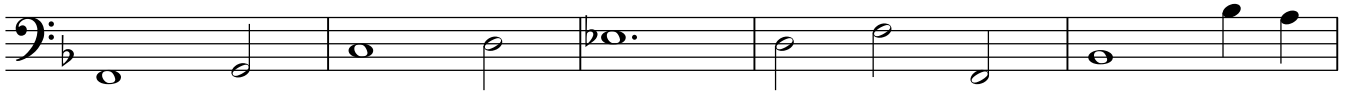
121



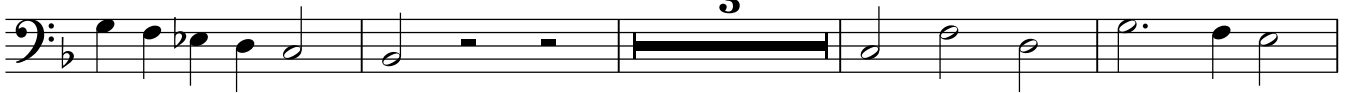
126



132



137



144



150



156



160

