

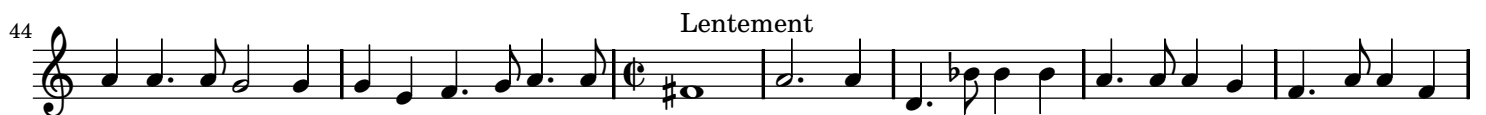
Roland (Tragedie)

Suite d'Orchestre

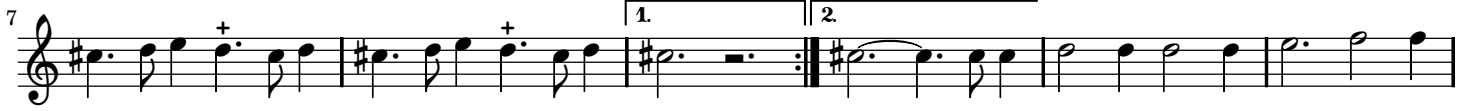
Violon II

J.B. Lully

I. OUVERTURE (Prologue)



II. GIGUE (Prologue, Seconde Entrée)



III. GAVOTTE (Prologue, Seconde Entrée)



IV. AIR (Acte 3, Scene 6)



V. CHACONNE (Acte 3, Scene 6)

10

19

28

37

46

54

62

71

80

89 Reprise

97

106

116

125

135

143

152

160

169

178

187

197

206

215

225

233

242

250

259

267

276

285

294

303

312

320

329

338

347

356

Detailed description: This block contains ten musical staves for Violon II. The first nine staves (267-356) are in a single system. The key signature changes from one flat (B-flat) to one sharp (F-sharp) between staves 312 and 320. The notation includes various note values (quarter, eighth, sixteenth notes), rests, and accidentals (sharps, flats, naturals). Some notes have a '+' sign above them, indicating a breath mark or a specific performance instruction. The system concludes with a double bar line and repeat dots.

VI. Entrée (Acte 4, Scene 3)

Fort gay

Fin

10

19

Detailed description: This block contains three musical staves for the section 'VI. Entrée (Acte 4, Scene 3)'. The first staff is in 4/4 time and starts with 'Fort gay'. The key signature is one sharp (F-sharp). The second and third staves (10 and 19) are in a single system and continue the melody. The notation includes quarter notes, eighth notes, and sixteenth notes. The system concludes with a double bar line and repeat dots.

VII. PREMIER AIR (Acte 5, Scene 3)

Musical score for Violon II, VII. PREMIER AIR (Acte 5, Scene 3). The score consists of three staves of music. The first staff starts at measure 6 and ends with a 'fin' marking. The second staff starts at measure 10. The third staff starts at measure 19 and ends with a double bar line. The music is in 3/4 time and features various rhythmic patterns and accidentals.

VIII. SECOND AIR (Acte 5, Scene 3)

Musical score for Violon II, VIII. SECOND AIR (Acte 5, Scene 3). The score consists of six staves of music. The first staff starts at measure 6 and includes first and second endings. The second staff starts at measure 12. The third staff starts at measure 17. The fourth staff starts at measure 22. The fifth staff starts at measure 26 and includes first and second endings. The music is in 3/4 time and features various rhythmic patterns and accidentals.