

## Gavotte

J. B. Lully Armide Tragédie en musique 1686

Descant



Musical score for Gavotte, measures 1-9. The piece is in 6/8 time and C major. It features a descant starting at measure 1. Measure 1 has a trill (tr) on the first note. Measure 2 has a repeat sign. Measures 3-4 have a trill on the first note. Measures 5-6 have a trill on the first note. Measure 7 has a trill on the first note. Measure 8 has a trill on the first note. Measure 9 has a trill on the first note. There are first and second endings indicated by '1.' and '2.' above measures 4 and 5 respectively.

## Canarie

J. B. Lully Armide Tragédie en musique 1686

Descant



Musical score for Canarie, measures 1-15. The piece is in 6/8 time and C major. It features a descant starting at measure 1. Measure 1 has a trill (tr) on the first note. Measure 2 has a trill on the first note. Measure 3 has a trill on the first note. Measure 4 has a trill on the first note. Measure 5 has a trill on the first note. Measure 6 has a trill on the first note. Measure 7 has a trill on the first note. Measure 8 has a trill on the first note. Measure 9 has a trill on the first note. Measure 10 has a trill on the first note. Measure 11 has a trill on the first note. Measure 12 has a trill on the first note. Measure 13 has a trill on the first note. Measure 14 has a trill on the first note. Measure 15 has a trill on the first note.

*Gavotte*

J. B. Lully Armide Tragédie en musique 1686

Treble 1

4

9

*Canarie*

J. B. Lully Armide Tragédie en musique 1686

Treble 1

4

11

15

*Gavotte*

J. B. Lully Armide Tragédie en musique 1686

Treble 2

1 2

4

9

*Canarie*

J. B. Lully Armide Tragédie en musique 1686

Treble 2

3

6

9

12

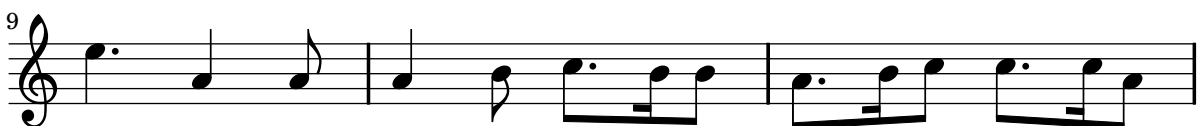
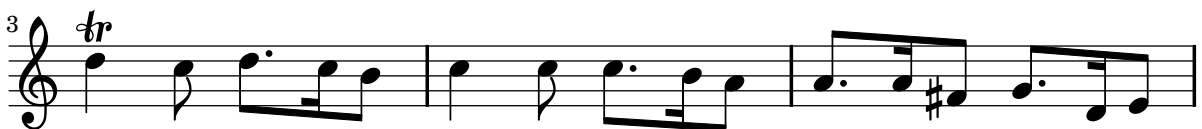
15

*Gavotte*

J. B. Lully Armide Tragédie en musique 1686

*Canarie*

J. B. Lully Armide Tragédie en musique 1686



*Gavotte*J. B. Lully *Armide* Tragédie en musique 1686

Bass

8

1. 1.

5 8

10 8

*Canarie*J. B. Lully *Armide* Tragédie en musique 1686

Bass

8

4 8

8 8

12 8

15 8