

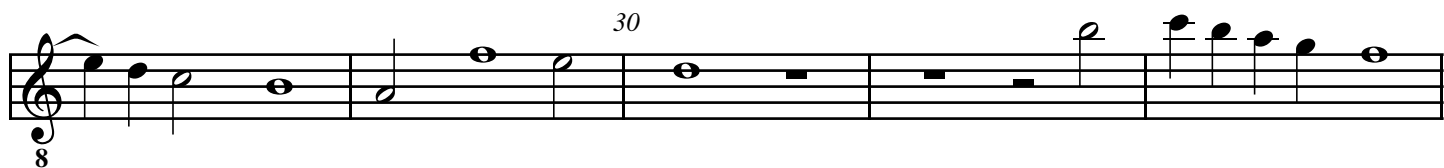
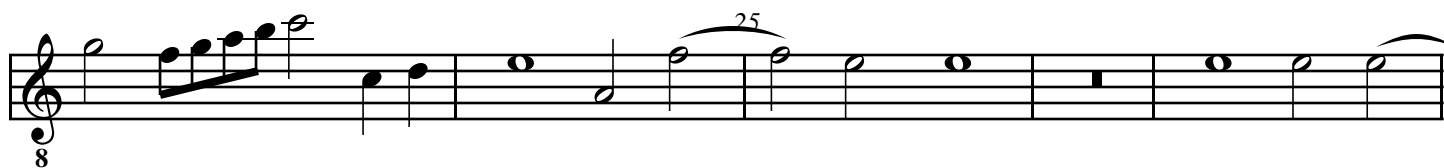
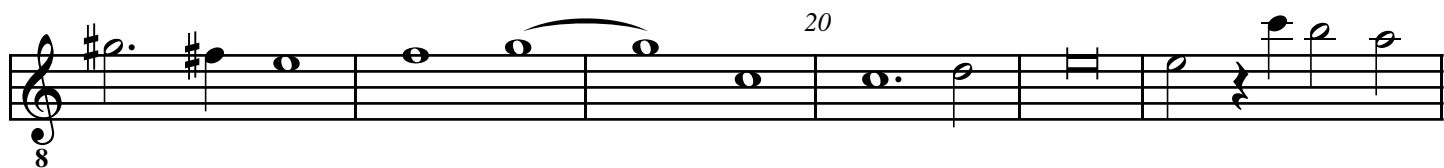
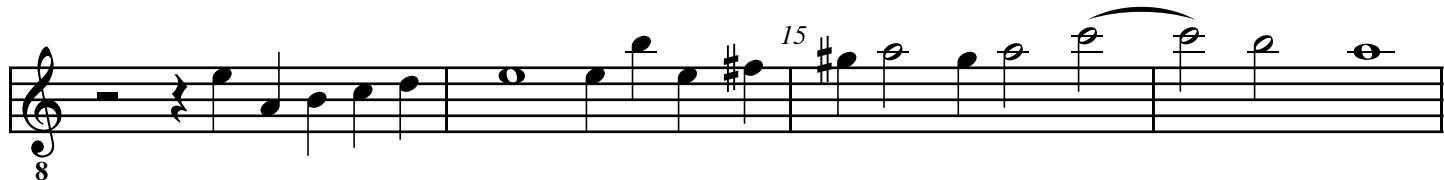
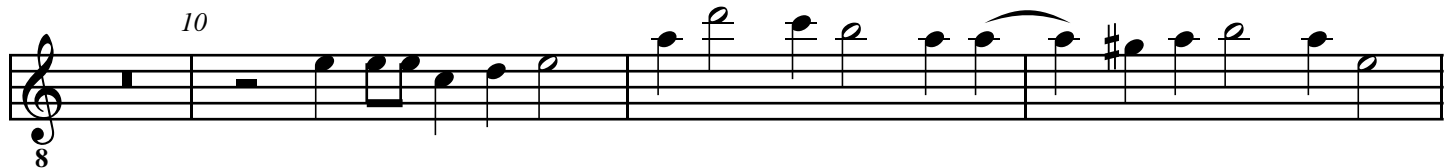
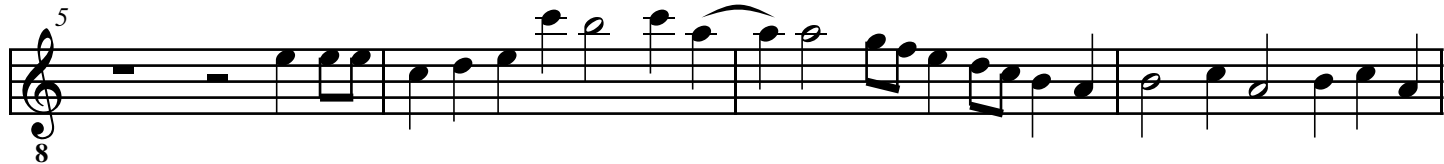
# Fantasia à 5

Vixi

Michael East

VdGS# 6

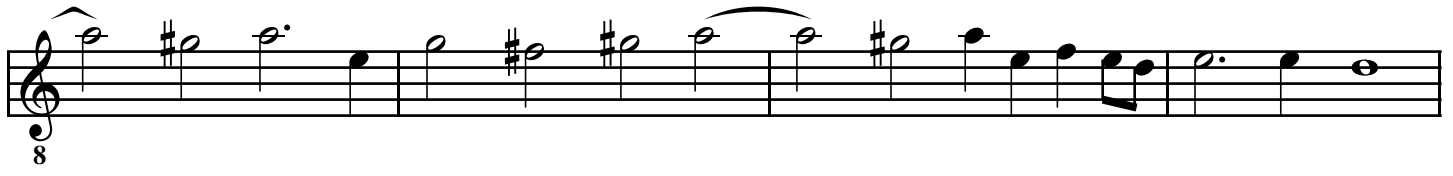
Tenor 1  
Tr Tr T T B





8

Musical notation on a single staff. It begins with a treble clef and a common time signature (C). The key signature has one sharp (F#). The melody consists of quarter notes and half notes with various accidentals (sharps and naturals). A slur is placed over the final two notes of the staff, with the number '45' written above it.



8

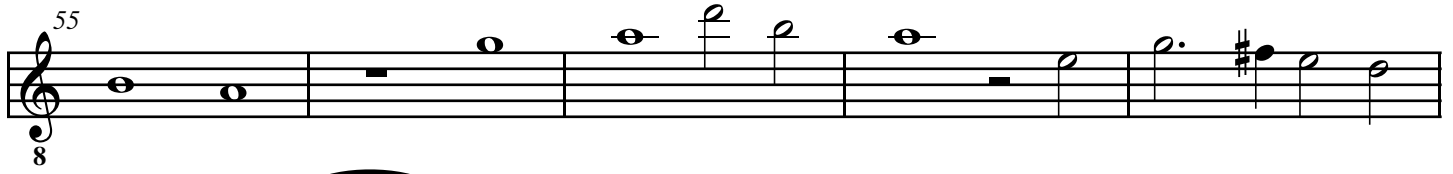
Musical notation on a single staff. It begins with a treble clef and a common time signature (C). The key signature has one sharp (F#). The melody continues with quarter notes and half notes. A slur is placed over a group of notes in the second measure.



50

8

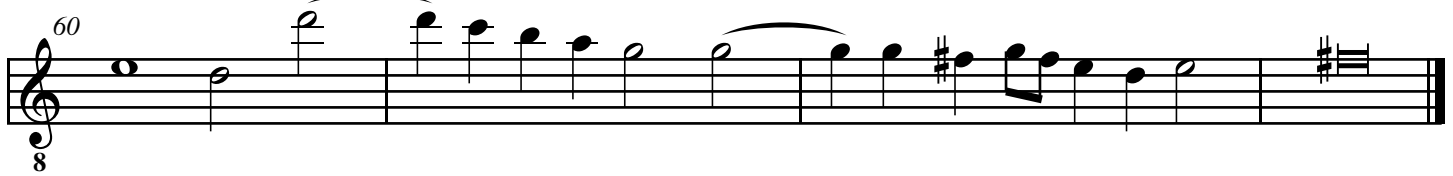
Musical notation on a single staff. It begins with a treble clef and a common time signature (C). The key signature has one sharp (F#). The melody continues with quarter notes and half notes. A slur is placed over a group of notes in the second measure.



55

8

Musical notation on a single staff. It begins with a treble clef and a common time signature (C). The key signature has one sharp (F#). The melody continues with quarter notes and half notes. A slur is placed over a group of notes in the second measure.



60

8

Musical notation on a single staff. It begins with a treble clef and a common time signature (C). The key signature has one sharp (F#). The melody continues with quarter notes and half notes. A slur is placed over a group of notes in the second measure. The staff concludes with a double bar line and a key signature change to two sharps (F# and C#).