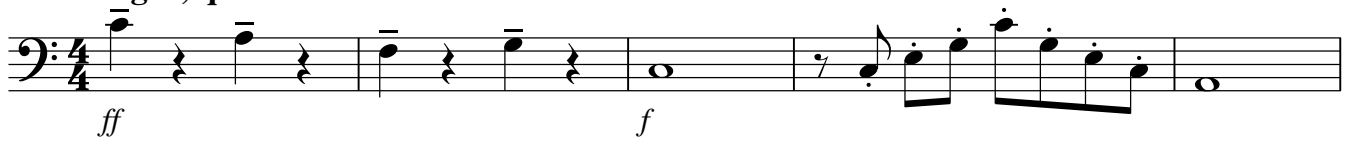
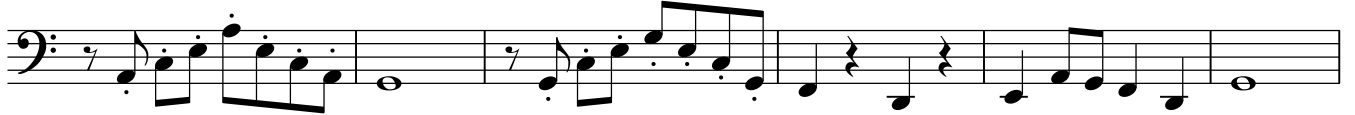


Gloria

Allegro, q=130



65



71



77



82



87



93

Moderato, q=87



99



105



Violoncello

171

rall.

177 **Allo moderato, h=96**

6



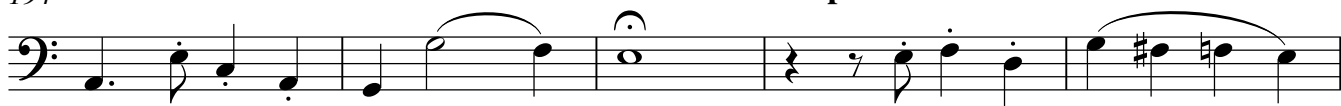
188



194

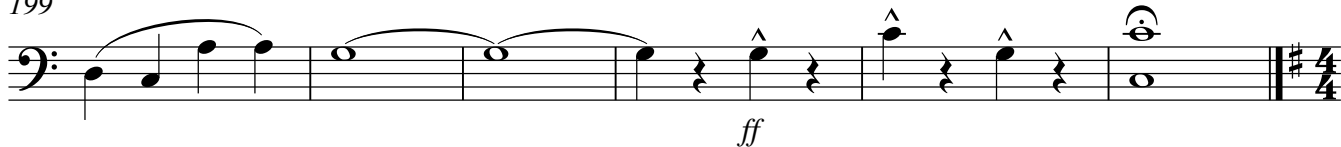
rall.

a tempo



199

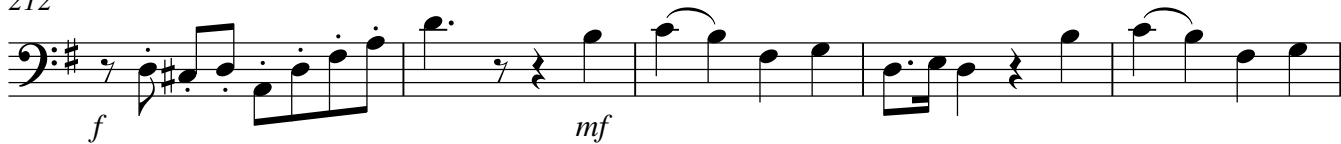
divisi



Sanctus

Allegro moderato, q=112

212



217



223

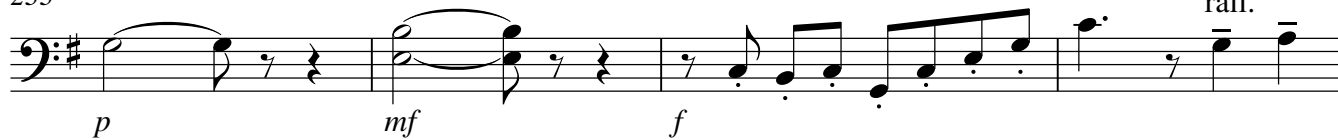


Violoncello

228



233



237



Andante, q=87

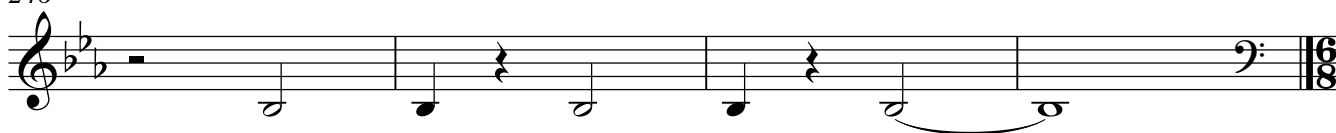
241

con sord.



246

attaca



O Salutaris

Andante sostenuto q=44

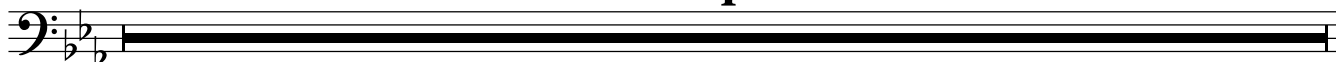
cantabile, con sord.



254

B

4



Violoncello
Agnus Dei

Moderato, q=79
senza sord.

303 **F** *p* **G**

314 **H** *p*

321 **I** *pizz.*

328 *arco* **J** *mp*

334 *mf*

339 *pizz.*

344 **K** *arco*

348 *pizz.*

352 **L** **5**

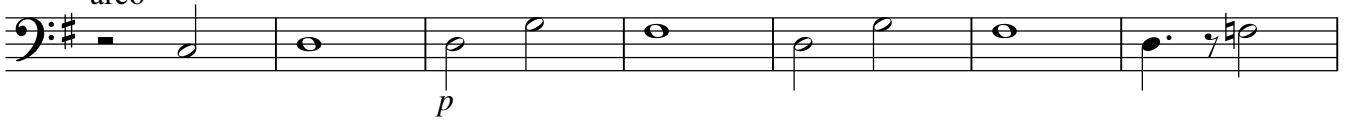
Violoncello

M

357

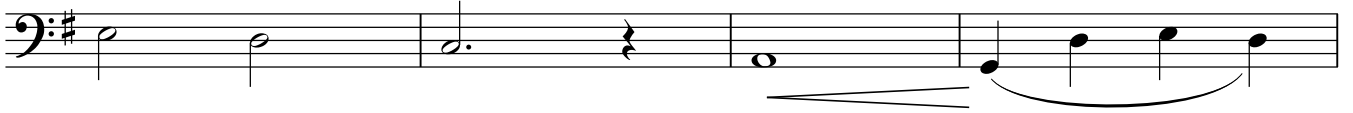
arco

rall.



364

a tempo



368

