



MERTON MUSIC

**S P O H R**

String Sextet in C

Op.140

VIOLA I

Merton Music  
8 Wilton Grove  
London SW19 3QX England  
Phone/Fax: 020 8540 2708 (+44 20 8540 2708)  
e-mail: [mertonmusic@argonet.co.uk](mailto:mertonmusic@argonet.co.uk)

6016

# SEXTETT.

## VIOLA 1<sup>mo</sup>

Allegro moderato.

LOUIS SPORR, Op. 110.

SEXTETT. *pp*

*p cresc. - - - f dim. pizz. pp arco. pp*

*<f> pp <f> p cresc. f dim. p*

*cresc. - - f*

*pp pp*

*cresc. mf dim. p pp pp*

*cresc. pp*

*cresc. f*

*pp tr.*

*cresc.*

VIOLA 1<sup>mo</sup>

This musical score for Viola 1<sup>mo</sup> on page 3 contains ten staves of music. The key signature is one sharp (F#) and the time signature is not explicitly shown but appears to be 4/4 based on the notation. The score includes various musical notations and dynamics:

- Staff 1:** Features a melodic line with slurs and trills (tr) marked above. Dynamics include *p*.
- Staff 2:** Continues the melodic line with slurs. Dynamics include *p*.
- Staff 3:** Shows a change in dynamics with *pp* and *f*. Includes a double bar line with repeat dots.
- Staff 4:** Features a melodic line with trills (tr) and dynamics *f*, *dim.*, and *p*.
- Staff 5:** Shows a melodic line with dynamics *mf* and *cresc.*.
- Staff 6:** Features a melodic line with dynamics *f* and *tr*.
- Staff 7:** Shows a melodic line with dynamics *dim.* and *p*.
- Staff 8:** Features a melodic line with dynamics *pp* and *6* (fingerings).
- Staff 9:** Shows a melodic line with dynamics *cresc.* and *f*.
- Staff 10:** Features a melodic line with dynamics *p*, *pp*, *cresc.*, *f*, *dim.*, and *p*.
- Staff 11:** Shows a melodic line with dynamics *cresc.* and *f*.

VIOLA 1<sup>mo</sup>

The musical score for Viola 1<sup>mo</sup> consists of ten staves of music. The notation includes various dynamics and articulation marks:

- Staff 1:** Starts with a forte (*f*) dynamic and features a trill (*tr*) on the first note.
- Staff 2:** Includes a first fingering (*1*) and a pianissimo (*pp*) dynamic.
- Staff 3:** Features dynamics of *cresc.*, *dim.*, *p*, and *pp*.
- Staff 4:** Includes a *pp* dynamic and a *cresc.* marking.
- Staff 5:** Contains second (*2*) and third (*3*) fingerings, a trill (*tr*), and a *pp* dynamic.
- Staff 6:** Features a *cresc.* marking and a trill (*tr*).
- Staff 7:** Includes a *pp* dynamic and a trill (*tr*).
- Staff 8:** Features a *cresc.* marking.
- Staff 9:** Includes a *dim.* marking.
- Staff 10:** Starts with a *p* dynamic and ends with a *dim. ppp* dynamic.



VIOLA 1<sup>mo</sup>

LARGHETTO.

2 2

*dolce.* *f* *dim.* *p* *pp*

*cresc.* *dim.* *pp*

*f* *dim.* *pp* *3 cresc.*

*f* *f*

*dim.* *p* *f* *dim.* *p*

*f* *f* *dim.* *pp*

*f* *p* *cresc.* *f*

*dolce.* *f*

*dim.* *p* *pp* *cresc.* *dim.*

*pp* *cresc.* *f* *dim.*

*cresc.* *dim.* *p*

VIOLA 1<sup>mo</sup>

*dim.* *p* *f* *dim.* *p* *f* *dim.*  
*f* *dim.* *fr* *dim.* *pp*  
*f* *p* *pp*  
*cresc.* *f* *p* *f* *dim.* *p*  
*pp*

## Moderato.

## SCHERZO.

*p pizz.* *arco.* *pp*  
*f*  
*f* *f* *f* *dim.* *pp*  
*f*  
*dim.* *pp*  
*p*

VIOLA 1<sup>mo</sup>

*p*

*cresc.* *cresc.*

*f*

*pp*

*f* *p*

*dim.* *pp* *pizz.*

*arco.* *pp* *f*

*pp*

*pp* *mf*

*pizz.* *pp*

**Attacca Subito il Presto.**

VIOLA 1<sup>mo</sup>

**FINALE.** Presto.

*f*

*dim. p* *f*

*dim. p*

*cresc.*

*f* *p*

*cresc.* *f*

*dim. p*

*f*

*f*

*f*



VIOLA 1<sup>mo</sup>

First staff of music in bass clef. It begins with a series of eighth notes, followed by a measure with a fermata. The dynamic marking *dim.* is placed below the staff, and *pp* appears further to the right.

Second staff of music in bass clef, continuing the melodic line with various note values and slurs.

Third staff of music in bass clef, starting with a dynamic marking of *f* (forte).

Fourth staff of music, which begins in treble clef and then changes to bass clef. It features a dynamic marking of *p* (piano).

Fifth staff of music in bass clef, containing several accents (>) and ending with a dynamic marking of *pp*.

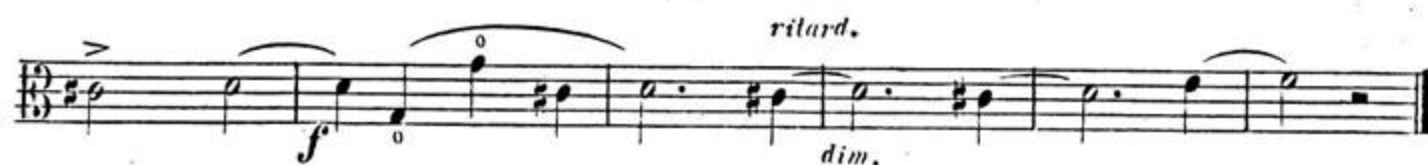
Sixth staff of music in bass clef, starting with a dynamic marking of *pp* and featuring a fermata.

Seventh staff of music in bass clef, featuring a dynamic marking of *f* and ending with *pp*.

Eighth staff of music in bass clef, containing a dynamic marking of *f* and some fingerings (e.g., 4, 2).

Ninth staff of music in bass clef, featuring a dynamic marking of *f* and some fingerings (e.g., 0, 0).

Tenth staff of music in bass clef, ending with a dynamic marking of *f* and a first ending bracket labeled '1'.

VIOLA 1<sup>mo</sup>

The musical score for Viola 1<sup>mo</sup> on page 41 consists of 12 staves of music. The key signature is G major (one sharp) and the time signature is 3/4. The score includes the following elements:

- Staff 1:** Starts with a *cresc.* marking.
- Staff 2:** Features dynamics of *f* and *p*.
- Staff 3:** Continues the melodic line.
- Staff 4:** Features dynamics of *f* and *pp*.
- Staff 5:** Features dynamics of *f* and *p*.
- Staff 6:** Features dynamics of *pp* and *pizz.* (pizzicato).
- Staff 7:** Includes the tempo marking *Presto.*
- Staff 8:** Includes performance instructions *string.* and *arco.* (arco).
- Staff 9:** Features dynamics of *dim.* and *f*.
- Staff 10:** Features dynamics of *dim.* and *p*.
- Staff 11:** Features dynamics of *cresc.*, *f*, and *p*.
- Staff 12:** Features dynamics of *cresc.* and *f*.
- Staff 13:** Features dynamics of *dim.* and *p*, and includes a triplet of eighth notes.

VIOLA 1<sup>mo</sup>

The musical score for Viola 1<sup>mo</sup> on page 12 consists of 11 staves of music in 3/4 time. The key signature has one flat (B-flat). The score includes various musical notations such as triplets, slurs, accents, and dynamic markings. The dynamics range from *pp* (pianissimo) to *f* (forte). The piece concludes with a fermata on the final note of the last staff.



Measures 1-12 of the Viola 1<sup>mo</sup> part. The music features a mix of eighth and sixteenth notes with various dynamics including *f* (forte) and *p* (piano). There are several slurs and accents throughout the passage.

Scherzo moderato.

Measures 13-24 of the Viola 1<sup>mo</sup> part, starting the *Scherzo moderato* section. The music is characterized by a rhythmic pattern of eighth notes. Dynamics include *pp pizz.* (pianissimo pizzicato) and *arco* (arco). There are first and second endings marked with '1' and '2'.

Prestissimo.

Measures 25-36 of the Viola 1<sup>mo</sup> part, starting the *Prestissimo* section. The music is very fast, featuring sixteenth-note passages. Dynamics include *pp* (pianissimo) and *f* (forte). The section concludes with a *dim.* (diminuendo) and a final *f* dynamic.