

Serenade in G - I

E. J. Robertson Op 29

ADAGIO 10 ALLEGRO 20

Cello

p *cresc.* *f*

30

40

mf *cresc.* *f*

50

60

f

70 90

dim. 5 20 3

Vln continue

CELLO 100

f

110

Cello

f *ff*

120

p *cresc.*

130

f

140

pizz.

150

160 190

Oboe

30

CELLO
arco

200

p *cresc.* *p subito*

pizz. 210

ff

Cello

220

arco

230

> *mf* > *p*

240 250

Upper strings continue

CELLO

pizz.

260

p *vuota* *p*

II : WALTZ

SLOW WALTZ TIME

E. J. Robertson Op. 29

10

pizz.
p

18

mf
cresc. p mf

25

arco
dim. p f p

33

pizz.
f

rit. arco
v v

a tempo pizz.
p

41

arco
mf pp

49

mf
dim. pp

58

cresc. mf dim. p

67 *pizz.* *p*

76 *mf* *dim.* *p*

84 *cresc.* *mf* *p*

92

100 *mf* *p* *cresc.* *mf*

108 *arco* *pizz.* *dim.* *p* *f*

116 *rit.* *arco* *pizz.* *arco* *p*

124

133 *pp*

III

CELLO

6

E. J. Robertson Op. 29

ANDANTE

p

p

cresc. *mf* *p*

pp

p

cresc. *mf* *cresc.* *f*

mf

53

cresc. *f* *dim.* *p* *cresc. poco a poco al 'ff'*

60

ff

63

64

65

68

f

74

espress.
p

81

p *pp*

88

p

IV

E. J. Robertson Op 29

TEMPO DI MENUETTO

*

Cello  *mf*

10



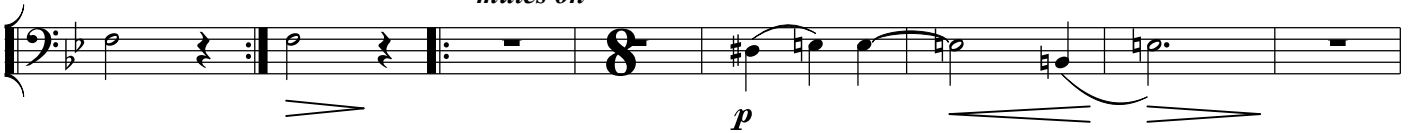
1.

2.

20

30

mutes on

 *p*

mutes off 40

 *mf*

50



1.

2.

60
solo

 *p* *f*

70

tutti

 *mp* *p* *p* *f* *p*

80

solo

 *p*

90

Cello

mp

100

tutti

M.D.C.
al segno *

V

E. J. Robertson Op. 29

ALLEGRO

1

pp

12

p

23

34

p sempre

45

f pizz.

56

mf p

66

pp arco cresc.

CELLO

77 *2*
ff *p* *mf*

88 *2* *pizz*
f *ff* *dim.* *mf*

99 *arco*

109

119

129 *dim.* *p* *cresc.* *mf* *dim.*

139 *p* *cresc.* *cresc. subito* *mf*

149

CELLO

32

160

cresc. *f* *dim.*

202

Clf Bsn CELLO

f

211

p cresc.

220

f

229

piu' f *f* *pp* *cresc.*

238

f *p*

248

cresc. molto *pizz* *p*

259

arco

270

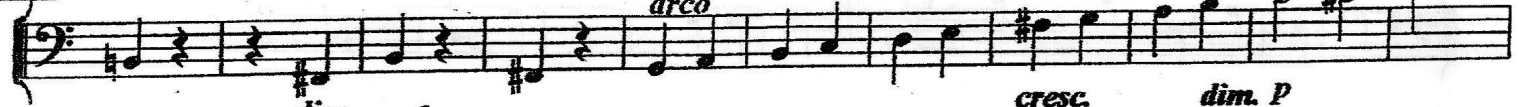
pizz.



cresc. f

281

arco



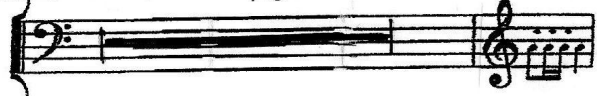
dim. mf

cresc. dim. p

292

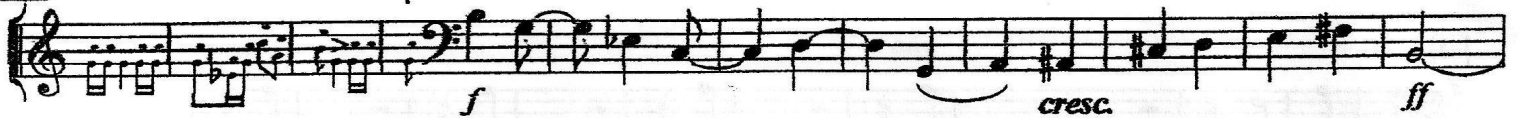
10

Vlms



303

CELLO



f

cresc.

ff

314

