

Violoncello 2<sup>o</sup>

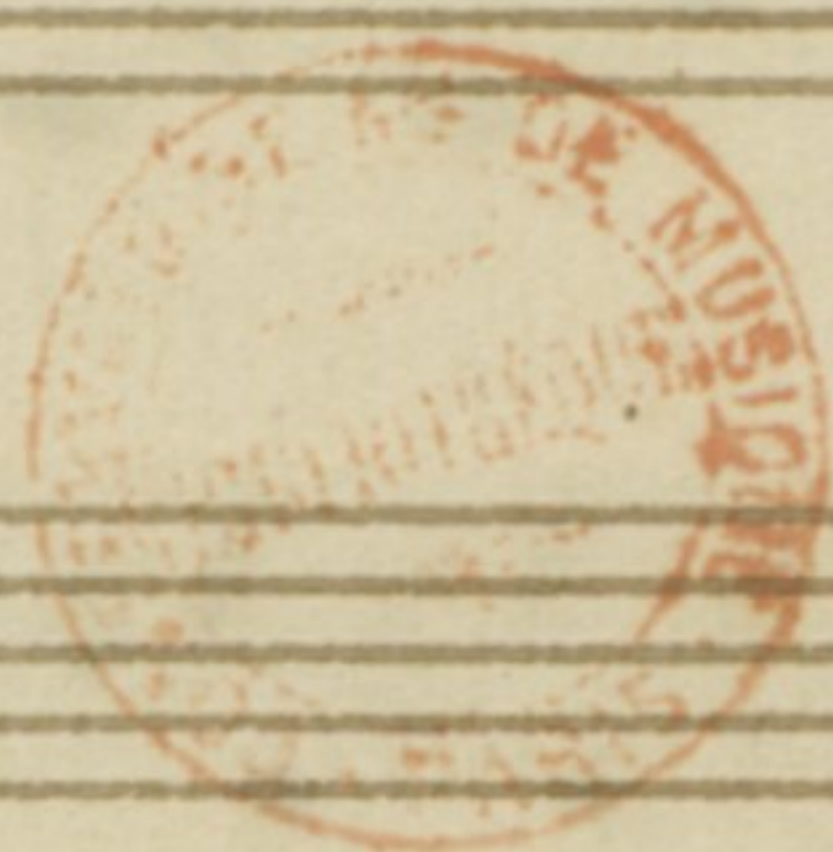
Six

Quintetti Inediti

de

Boccherini.

Op. 36.





7 Quintetto 1<sup>o</sup>

Violoncello 2<sup>o</sup>

And<sup>te</sup> affettuoso *Sotto voce*

*cres*

*dolcis*

*tr*

*dolcis* *fa zi*

*cres* *dol*

*cres* *dol*

*Sotto voce*

*poco f* *cres* *F* *PP*

*F* *PP*

*poco f* *dol* *rinf*

*PP*

*Sotto voce*

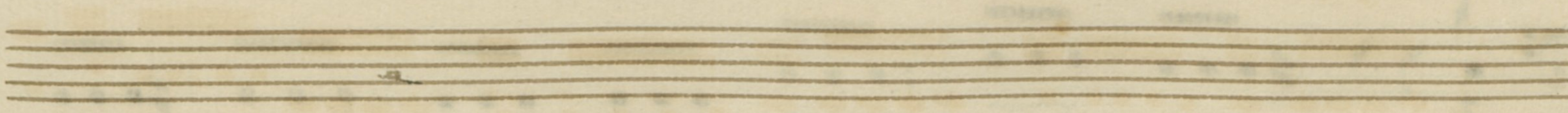
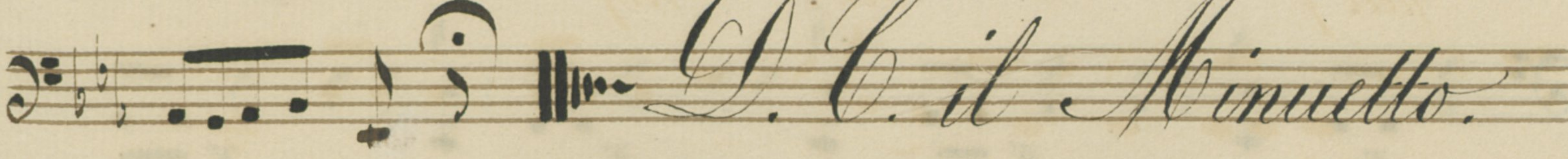
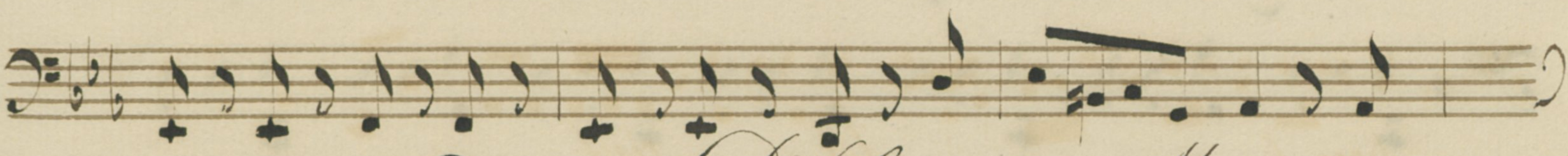
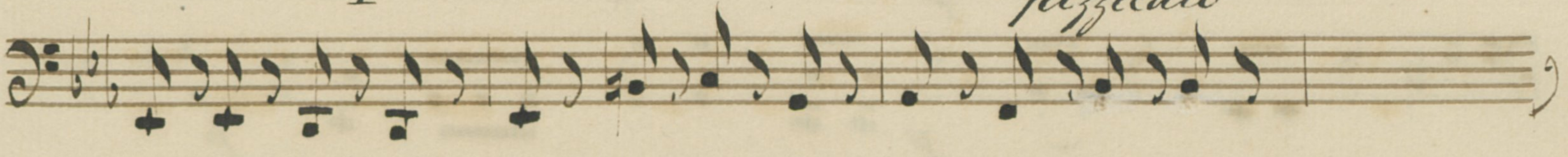
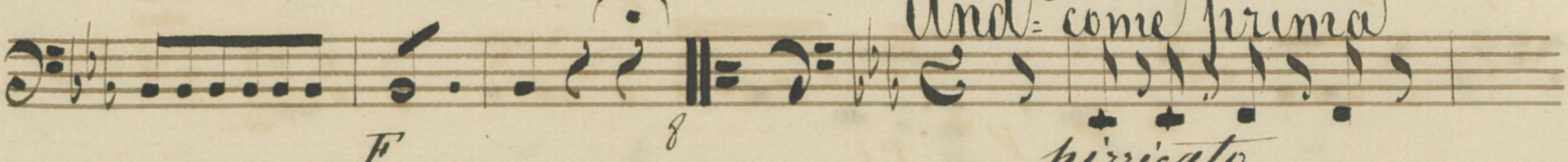
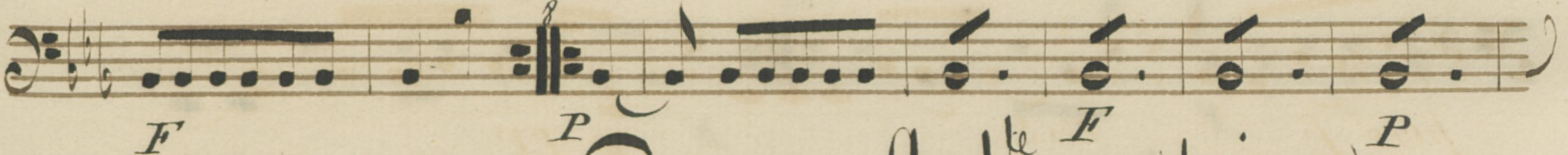
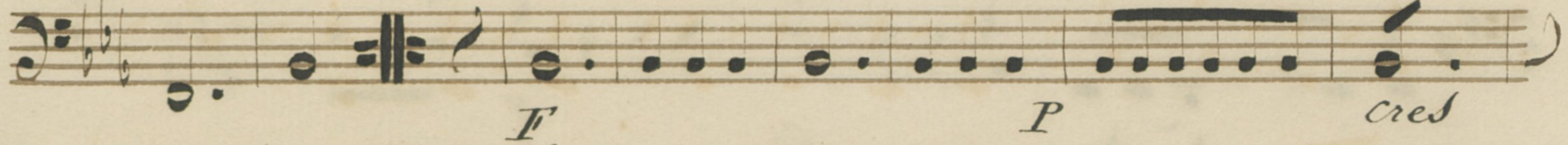
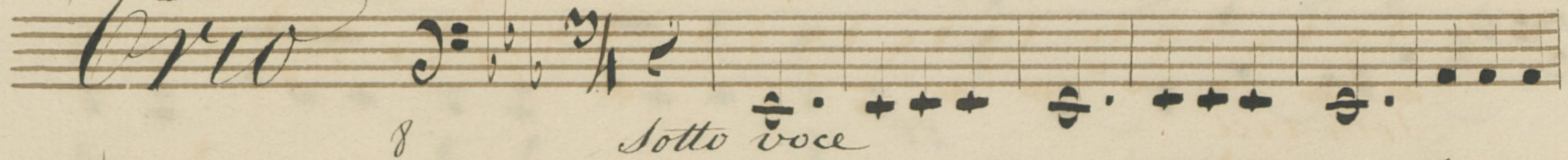
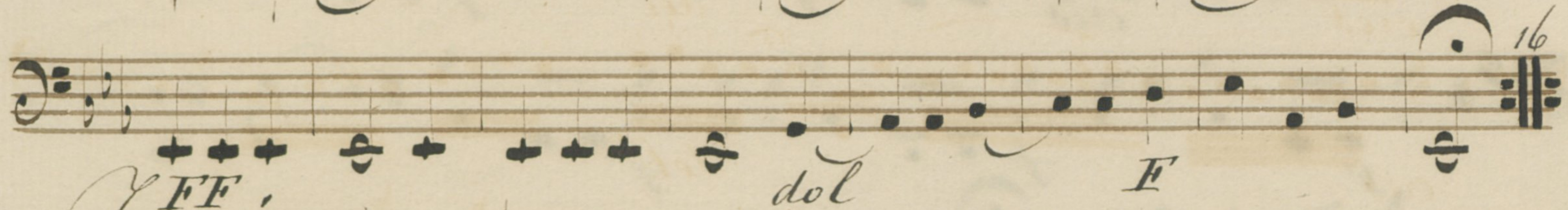
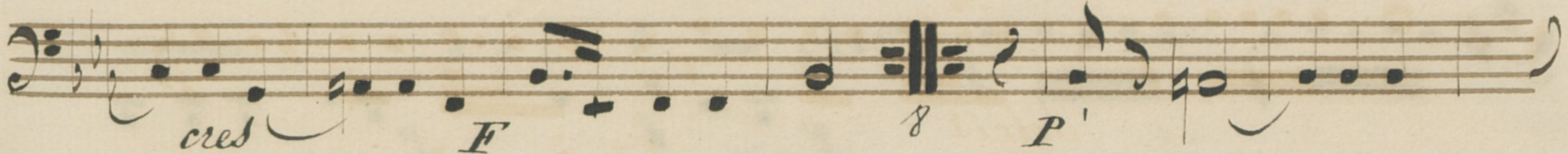
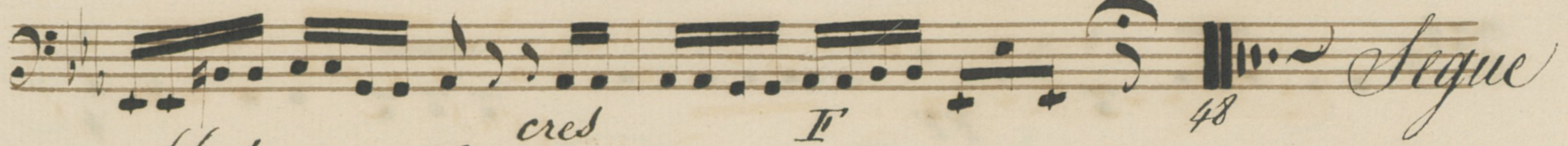
*Sotto voce*

*Sotto voce*

*Sotto voce*



Violoncello 2<sup>o</sup>





Quintetto 2<sup>o</sup>

Violoncello 2<sup>o</sup>

Allegro assai

*P* *FF* *P* *F* *F* *P* *F* *F* *F* *F* *60* *F* *P* *F* *P* *F* *F* *F* *F* *P* *P* *F* *F* *F* *F* *F* *F* *P* *cres* *F*



Violoncello 2<sup>o</sup>

Musical score for Violoncello 2<sup>o</sup>, measures 1-100. The score is written in bass clef with a key signature of one sharp (F#) and a 2/4 time signature. It consists of ten staves of music. The dynamics are marked as follows: *P* (piano), *cred* (crescendo), *F* (forte), *FF* (fortissimo), *PP* (pianissimo), and *f* (forte). The piece concludes with a double bar line and the word *Segue* written in cursive.



Four empty musical staves are located at the bottom of the page, below the *Segue* marking. They are blank, indicating that the music continues on the following page.



Violoncello 2<sup>o</sup>

Rondo mod<sup>o</sup>

Handwritten musical score for Violoncello 2<sup>o</sup>, titled "Rondo mod<sup>o</sup>". The score consists of 14 staves of music. The key signature is one sharp (F#) and the time signature is 2/4. The piece begins with a first-measure rest. The dynamics range from *pp* (pianissimo) to *ff* (fortissimo). Other markings include *dol* (dolce), *cres* (crescendo), and *f* (forte). There is a shaded-out section on the eighth staff. The score concludes with a *dol* marking.



Violoncello 2<sup>o</sup>

Handwritten musical score for Violoncello 2<sup>o</sup>. The score consists of ten staves of music. The first staff begins with a *tr* (trill) marking. The second staff includes *dol* (dolce), *F* (forte), and *PP* (pianissimo) markings. The third staff has *F* and *Sf* (sforzando) markings. The fourth staff has *P* (piano) and *poco F* (poco forte) markings. The fifth staff has *PP* markings. The sixth staff has *F* and *Sf* markings. The seventh staff has *Sf* and *P* markings. The eighth staff has *cred* (crescendo) and *P* markings. The ninth staff has *40* (measure number) and *poco F* markings. The score concludes with the instruction *D. C. sino al segno* and a *segno* symbol.



8 Quintetto 3<sup>o</sup>  
Larghetto

Violoncello 2<sup>o</sup>

*soave*

*poco F*

*FF* *P* *FF*

*F* *P*

*poco F* *P*

*25*

*cres* *il* *F*

*PP* *dolcis*

*poco F* *PP* *cres*

*FF* *FF* *P*

*poco F* *33*

*Segue*

*Prestissimo*

*P* *F*



Violoncello 2<sup>o</sup>

9

Handwritten musical score for Violoncello 2<sup>o</sup>, page 21. The score consists of 15 staves of music in bass clef with a key signature of two sharps (F# and C#). The music features various dynamics including *ppp*, *pp*, *p*, *f*, *ff*, and *sf*, as well as articulation marks like accents and *cres* (crescendo). A double bar line with the number 36 is present on the fifth staff, and another with the number 50 is on the thirteenth staff. A shaded rectangular area covers a portion of the sixth staff.



# Quintetto 4<sup>o</sup>

# Violoncello 2<sup>o</sup>

Allegretto  
Mod: è affectuoso

The musical score for Violoncello 2 consists of 14 staves. The notation includes various rhythmic values, accidentals, and dynamic markings. The dynamics range from *pp* (pianissimo) to *ff* (fortissimo). Performance markings include *pizz* (pizzicato) and *arco* (arco). The tempo is marked *Allegretto* and the mood is *Mod: è affectuoso*. The score is written in a style characteristic of 18th or 19th-century manuscript notation.



Violoncello 2<sup>o</sup>

The first section of the music is written across five staves. It begins with a dynamic marking of *cred* (crescendo) on the second staff, followed by *P* (piano) on the third staff. The fourth staff features *poco f* (poco forte) and *PP* (pianissimo) markings. The section concludes with a double bar line and the word *Segue* written in a large, decorative script.

The second section, titled *Minuetto*, is written across five staves. It starts with a dynamic marking of *F* (forte) on the second staff, followed by *PP* (pianissimo) on the third staff. The fourth staff includes *F* (forte) and *P* (piano) markings. The section ends with a double bar line and the word *Minore* written in a large, decorative script.

The third section, titled *Minore*, is written across five staves. It begins with a dynamic marking of *F* (forte) on the second staff, followed by *ppoco f* (poco forte) on the third staff. The fourth staff features *PP* (pianissimo) and *cred* (crescendo) markings. The section concludes with a double bar line and the initials *D.C.* (Da Capo) written in a large, decorative script.



# Quintetto 5<sup>o</sup>

# Violoncello 2<sup>o</sup>

Andantino  
amoroso

*soave*

*poco f* *P*

*poco f*

*pp* *poco f*

*pp*

*cres* *poco f* *P*

*rit* *soave*

*poco f*

*poco f* *pp*

*poco f* *P*

*poco f* *P*

*Segue*



Violoncello 2:

*Minuetto*

*Minuetto*

*P* *cres*

*F* *P*

*poco f* *P* *poco f* *rit* *Sf* *P*

*cres*

*Crio*

*PP* *F* *P*

*F* *F* *8*

*P* *F* *PP*

*poco F*

*P* *F* *20*

*P* *F*

*D.C.*



18 Quintetto 6<sup>o</sup>

Violoncello 2<sup>o</sup>

Lento e amoroso *Soave assai*

*poco f* *cres* *dolcis* *rinf* *P*

*cres* *F* *P*

*FF* *dolcis*

*poco F* *PP*

*cres*

*F* *dolcis* *poco F* *cres*

*F* *P*

*FF* *P*

18

26

*Minuetto*

*poco F* *P* *F*



# Violoncello 2<sup>o</sup>

Handwritten musical score for Violoncello 2<sup>o</sup>. The score consists of 14 staves of music. The first staff begins with a dynamic of *F* and the instruction *dolcis*. The second staff includes a dynamic of *sf*. The third staff starts with *piuot* and *P*, followed by a double bar line and the tempo marking *All<sup>o</sup> assai*. The fourth staff has dynamics *F*, *P*, and *cred*. The fifth staff has *F* and *F è staccato*. The sixth staff has *sf* and *FF*. The seventh staff has *P*. The eighth staff has *P* and *cred*. The ninth staff has *F*. The tenth staff has *F*. The eleventh staff has *F*. The twelfth staff has *F*. The thirteenth staff has *PP*. The fourteenth staff has *sf* and a double bar line with a fermata.

D. C. il Minuetto