

Children Lullabies
Symphony No.38 (III)

for Soprano & Orchestra

(Far in the wood - Anonymous)

Cello

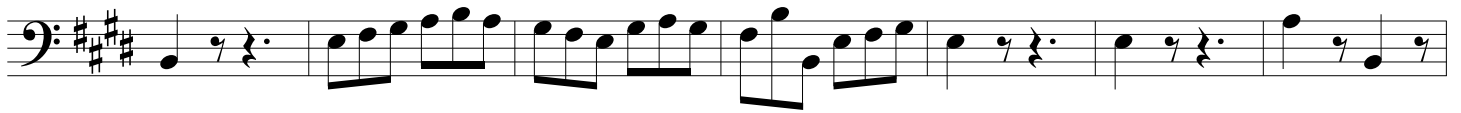
Michel Rondeau
August 9th-20th-2010

Andante $\text{♩} = 65$

The musical score for Cello is written in bass clef with a key signature of three sharps (F#, C#, G#) and a 6/8 time signature. The tempo is marked 'Andante' with a quarter note equal to 65 beats per minute. The score consists of six staves of music, with measure numbers 8, 15, 23, 30, 40, and 47 indicated at the beginning of their respective lines. The first staff begins with a *pizz.* marking and a dynamic of *mf*. The second staff starts at measure 8 with an *arco* marking. The third staff starts at measure 15 with a *pizz.* marking. The fourth staff starts at measure 23 with dynamics of *p*, *pp*, and *mp*. The fifth staff starts at measure 30 with a 4-measure rest. The sixth staff starts at measure 40 with an *arco* marking. The seventh staff starts at measure 47 with a *pizz.* marking.

Rondeau Symphony No.38 (III) Cello

54



61



68



76



83

