

Tommaso  
GIORDANI

Six Quatuors  
op.8

Violon II

*Sei*  
QUARTETTI  
*per*  
*Due VIOLINI, VIOLA, e*  
VIOLONCELLO  
*Composti da*  
TOMMASO GIORDANI,  
Opera VIII.  
*Umilmente Dedicati*  
*alla*  
*Sua Eccellenza La Contessa di*  
TAFFÉ, &c, &c. *Pr. 10.0.*  
LONDON. Printed for W. Nisbet, the Corner of  
Lancaster Court Strand.  
Where may be had  
*Six Quartets by Kachon Pr. 10.0. Six by Madam Symon Pr. 10.0.*

*"Le Concert"*

# Quatuor Op.8 n°1

Violino II

Tommaso GIORDANI

(1738-1806)

Moderato

1

7

12

16

20

25

30

37

42

47

*ten.*

*mf*

*sf*

*sf*

*sf*

*p*

*f*

*sf*

*Solo*

*p*

*f*

*p*

*ten.*

3

*tr*

53 *mf* *sf*

58 *f*

62 *f assai* *p assai*

68 *f* *f* *Solo*

74 *tr.*

79 *p* *ten.* *p*

87 *f* *p*

92

97 *p*

103 *f*

108 *p* *f* *p* *f* *sf*

114 *tr.* *p assai* *ten.* *mf*

121

127

132

135

139

145

150

155

159

163

168

173

*Solo*

*sf*

*p*

*f*

*Solo*

*tr*

*f*

*p*

*f*

Detailed description: This page of a musical score for Violino II contains measures 121 through 173. The music is written in a single staff with a treble clef and a key signature of two flats (B-flat and E-flat). The score includes various musical notations such as slurs, ties, and dynamic markings. Key features include: a *Solo* marking at measure 145; a *sf* (sforzando) marking at measure 139; a *p* (piano) marking at measure 139; a *f* (forte) marking at measure 150; a *Solo* marking at measure 155; a *tr* (trill) marking at measure 163; a *f* (forte) marking at measure 173; and a *p* (piano) marking at measure 168. The score also features several triplet markings (indicated by a '3' over a group of notes) and various articulation marks.

**Largo**

5

10

14

17

19

21

24

27

31

35

39

*mf*

*f*

*p*

*f*

*p*

*f*

*p*

*sf*

*f*

*p*

*p*

*mf*

*p*

*tr*

*tr*

*tr*

*Solo*

43 48 *f* *p* 51 *p* 54 *f* *tr*

## Minuetto

1 *f* *sf* *sf* 8 *f* *Fine* 17 *tr* *f* 25 *p* 1 *Solo* 35 *p* 44 1 *sf* 52 *f* *tr* *Solo* 60 *sf* *p*

*D.C. il Primo Min.  
Senza Replica*

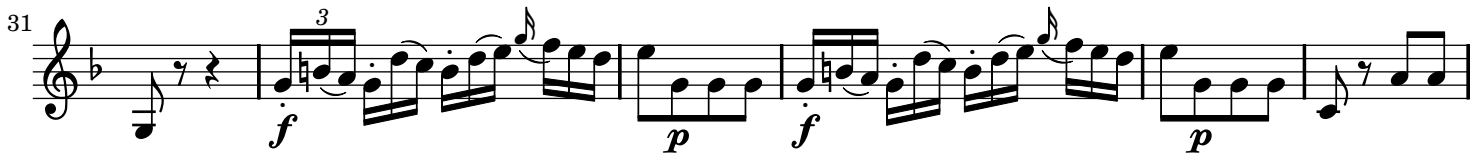
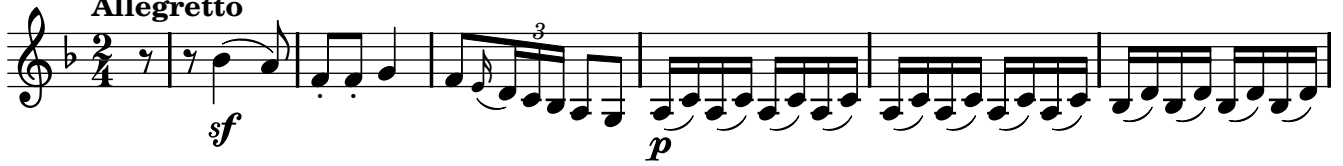
# Quatuor Op.8 n°2

Violino II

Tommaso GIORDANI

(1738-1806)

**Allegretto**



66 *tr* *sf* 3 *sf* 3 *p* *p* *sf* 3

72 *p* 3 *mf* *p*

78 *sf* *sf* *sf*

86 *f* *p* *f* *p*

95 *f*<sup>3</sup>

101 *p*

108 *f*

116 *p* *f* *p* *f* *tr*

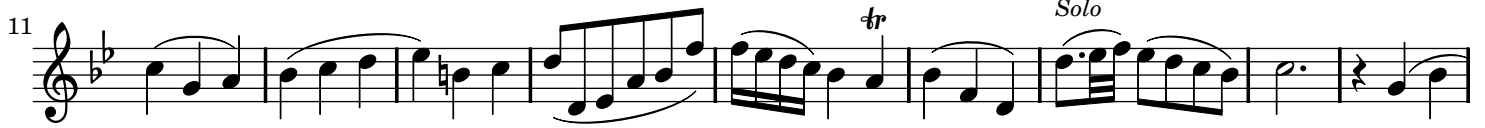
123 *tr*

127 *sf* *sf* 3 3 *f* 3 3 *tr* *tr* *tr* *tr*

134 *p* 3 *poco f* *tr*

Detailed description: This page of a musical score for Violino II contains ten staves of music, numbered 66 to 134. The key signature is one flat (B-flat). The score features a variety of musical textures and dynamics. It includes trills (tr), triplets (3), and dynamic markings such as fortissimo (sf), piano (p), mezzo-forte (mf), forte (f), and poco forte (poco f). The music is characterized by intricate rhythmic patterns, including sixteenth and thirty-second notes, and frequent use of slurs and ties. The piece concludes with a double bar line at measure 134.



**Larghetto****Allegretto**

Musical score for Violino II, measures 17-87. The score is written in treble clef with a key signature of one flat (B-flat). It features various dynamics including *f* (forte), *sf* (sforzando), *p* (piano), and *pp* (pianissimo). The notation includes slurs, accents, and trills. Measure numbers 17, 22, 28, 33, 40, 48, 55, 61, 68, 76, 82, and 87 are indicated at the beginning of their respective staves.

# Quatuor Op.8 n°3

Violino II

Tommaso GIORDANI

(1738-1806)

**Spiritoso**

*f* *sf*

6 *rinf.* *p*

12 *p* *p* *sf* *p* *tr* *Solo* *f*

18 *sf* *sf* *tr* *tr* *p*

23 *sf*

28

33

38 *tr* *p* *f* *f*

43 *tr* *sf* *p* *f*

48 *sf* *sf*

53 **1**  
*p* *mf* *p* *tr*

62 *Solo*  
*f*

69 *mf*

75 *f* *sf*

84 *f* *sf*

91 *rinf.* *p* *f*

97 *p* *f* *p*

107

115 *mf* *f* *mf* *f* *mf*

122 *tr* *p*

129 *mf* *f* *mf* *f* *mf*

136 *tr* *f*

142 *sf*

Detailed description: This page of a musical score for Violino II contains 14 measures, numbered 53 to 142. The music is written in a single staff with a treble clef. It features a variety of dynamic markings including piano (*p*), mezzo-forte (*mf*), forte (*f*), fortissimo (*sf*), and rinforzando (*rinf.*). There are also trills (*tr*) and a 'Solo' section starting at measure 62. The notation includes eighth and sixteenth notes, rests, and accidentals. The piece concludes with a double bar line at measure 142.

## Larghetto

Musical score for Violino II, *Larghetto*. The score consists of ten staves of music in 3/8 time, starting with a key signature of two flats. The dynamics range from piano (*p*) to fortissimo (*f*). The music features various rhythmic patterns, including eighth and sixteenth notes, and includes trills and triplets.

## Allegretto

Musical score for Violino II, *Allegretto*. The score consists of three staves of music in 3/8 time, starting with a key signature of two flats. The dynamics range from piano (*p*) to fortissimo (*f*). The music features eighth and sixteenth notes, and includes trills and a section marked *Sciolte*.

43 *Sciolte*  
*f* *p*

56 *f* *Solo*

67

75

85 *mf* *p*

100 *Sciolte*  
*f* *p*

113 *f* *p*

126 *ten.*

141 *mf*

155 *p* *Sciolte*  
*f*

168 *p* *f* *sf*

181 *sf* 3 3 3 3

Detailed description: This page of a musical score for Violino II contains 13 staves of music, numbered 43 to 181. The music is written in a single treble clef. It features various dynamics including fortissimo (f), piano (p), mezzo-forte (mf), and sforzando (sf). Performance instructions such as 'Sciolte' (loose bowing) and 'Solo' are present. The score includes slurs, accents, and fermatas. A 'ten.' (tension) marking is used at measure 126. The final measure (181) features a series of triplets. The page number '13' is in the top right corner, and the instrument name 'Violino II' is in the top left.

# Quatuor Op.8 n°4

Violino II

Tommaso GIORDANI

(1738-1806)

**Spiritoso**

*mf* *p*

6

*mf* *sf* *p*

11

*sf* *p* *sf*

17

*p* *f* *p*

22

*ten.*

28

*Solo* *f*

34

38

44

52

61

67

72



78 *sf* *mf*

83

88 *Solo* *f*

92 *mf* *p*

97 *sf* *Solo*

103 *p*

109 *sf* *sf*

114 *p* *sf* *p*

119

124

130 *Solo*

134

140

147

153

161

166

171

## Rondo - Allegretto Grazioso

Musical score for Violino II, Rondo - Allegretto Grazioso. The score consists of 11 staves of music in G major, 2/4 time. The key signature has three sharps (F#, C#, G#). The piece begins with a piano (*p*) dynamic. The first staff (measures 1-4) is marked *p*. The second staff (measures 5-8) is marked *f*. The third staff (measures 9-14) is marked *p*. The fourth staff (measures 15-19) is marked *p* and includes the instruction *Solo*. The fifth staff (measures 20-24) includes trills (*tr*). The sixth staff (measures 25-28) includes trills (*tr*). The seventh staff (measures 29-32) is marked *Sciolte* and includes triplets (3). The eighth staff (measures 33-37) includes triplets (3) and is marked *sf*, *p*, and *p*. The ninth staff (measures 38-41) is marked *f*. The tenth staff (measures 42-45) is marked *f*. The eleventh staff (measures 46-49) is marked *f*. The final staff (measures 50-53) is marked *p* and includes the instruction *Minore*.

54

59

65

70

78

84

92

*calando* *p* *Majore* *p*

100

104

108

112

*p assai* *cresc. - - - - f* *p*

117

*cresc. - - - - f*

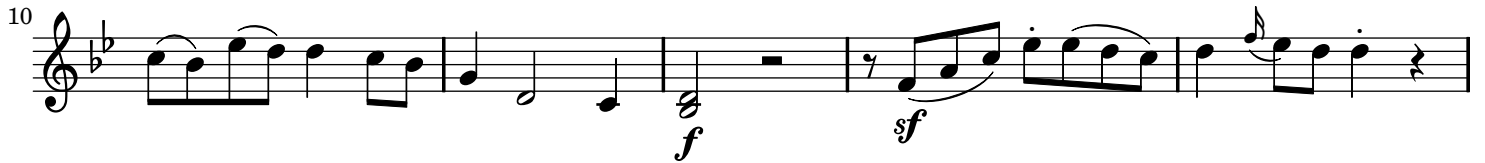
## Quatuor Op.8 n°5

Violino II

Tommaso GIORDANI

(1738-1806)

## Allegro con Brio



51 *f* *sf*

56 *p*

62 *Solo* *mf*

68 *p*

73

79 *sf*

85 *sf* *sf*

91 *Solo* *f* *tr*

96 *p* *ten.* *p*

101 *sf* *p* *mf*

108 *p* *f*

**Largo**

*Sotto Voce*

5

10

*sf* *p*

14

19

24

*f* *p*

## Tempo di Minuetto

Measures 1-7: *f* *f* *tr*

Measures 8-15: *p* *f* *tr*

Measures 16-23: *Fine* *p* *tr*

Measures 24-31: *p* *f* *tr*

Measures 32-40: *p* *f*

Measures 41-48: *p* *f* *p* *f* *p* *Da Capo il Primo*



# Quatuor Op.8 n°6

Violino II

Tommaso GIORDANI

(1738-1806)

**Allegro Maestoso**



29 *sf* *p*

32 *f* *p*

36 *p* *p*

40

42 *f* *f*

45 *p* *cresc.*

49

51 *p*

54 *f* *f* *p*

59 *f* *p* *f* *p*

Detailed description: This page of a musical score for Violino II contains ten staves of music, numbered 29 to 59. The key signature is one flat (B-flat major or D minor). The music features a variety of dynamics and articulations. Staves 29-31 show a melodic line starting with a forte (*sf*) dynamic, followed by a piano (*p*) section. Staves 32-35 feature a more complex, rhythmic passage with a forte (*f*) dynamic, transitioning to piano (*p*). Staves 36-39 continue with a melodic line, marked piano (*p*). Staves 40-41 show a rhythmic pattern with a sharp sign (#) indicating a key change or chromatic movement. Staves 42-44 feature a melodic line with a forte (*f*) dynamic. Staves 45-48 show a melodic line with a piano (*p*) dynamic and a crescendo (*cresc.*) marking. Staves 49-53 feature a complex, rhythmic passage with a piano (*p*) dynamic. Staves 54-58 show a melodic line with a forte (*f*) dynamic, followed by a piano (*p*) section. The score concludes with a final measure on staff 59, marked piano (*p*).

Fugato

1

8

16

24

30

36

45

51

60

68

74

81

90

*f*

*f*

*p*

*Solo*

*f*

*p*

*p*

98 *f*

104

110 *f*

118 *p* *f*

124

132 *sf* *f*

140

**Minuetto Affettuoso**

*p* *f* *sf*

9 *sf* *tr* *3* *2* *p*

18 *sf* *sf* *f* *tr* *3*

26 **Minore**

35 *tr*

44 *Da Capo*