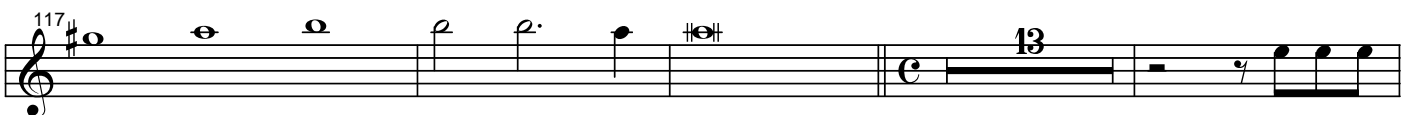
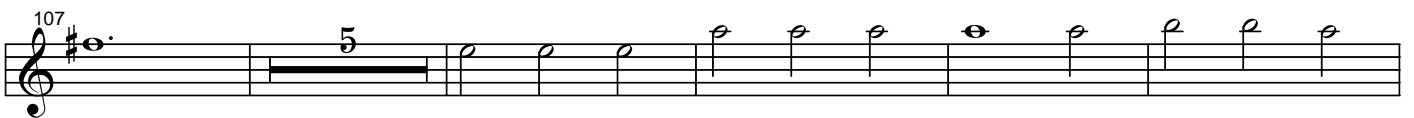


MISERERE A 2 DESSUS 2 FLUTES

et basse cont.

M.A. Charpentier

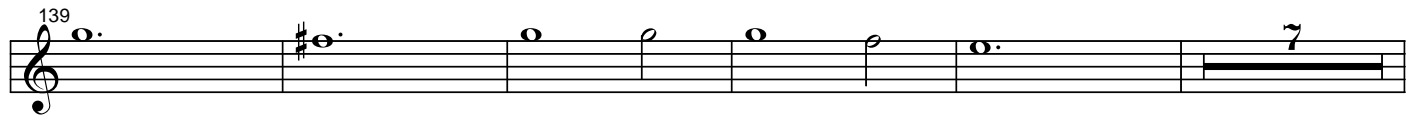


flute 1

134



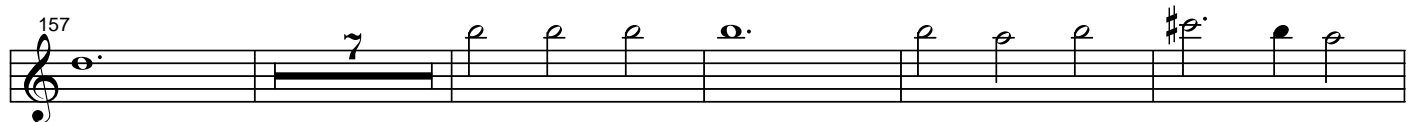
139



151



157



169



175



179



186



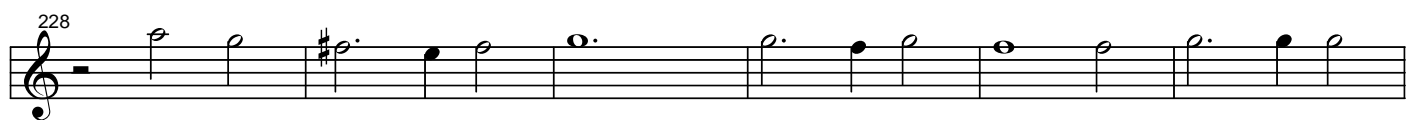
189



193



228



234



flute 1

239

244

249

255

269

278

284

289

324

329

335

341

flute 1

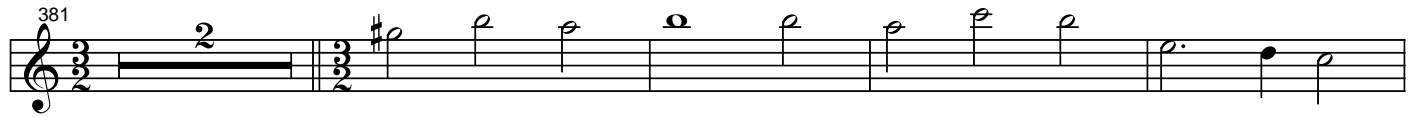
347 14



365 12



381 2



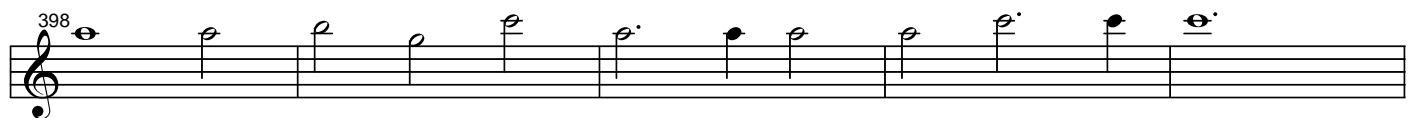
387



393



398



403



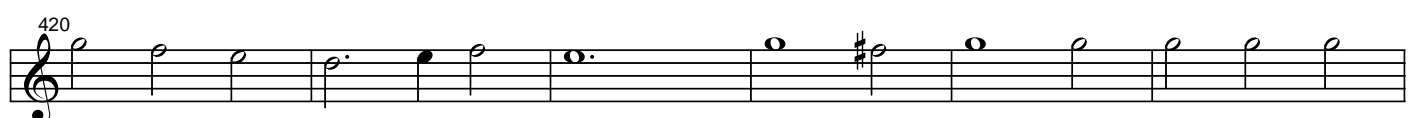
408



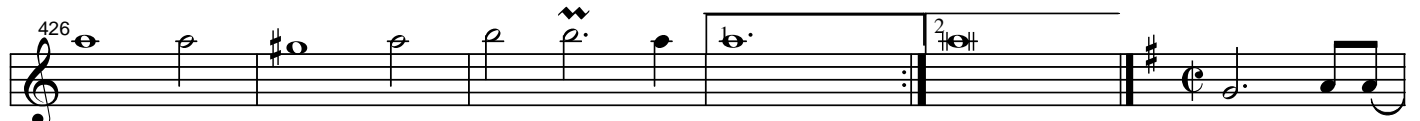
414



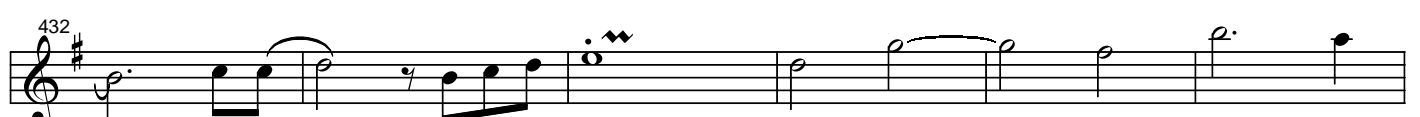
420



426



432



flute 1

438

444

450

462

468

476

482

494

499

505

522

539

flute 1

544 *be*

550

556 *doux*

562

591

604

609

621

627

633

657

663

flute 1

Musical score for flute 1, measures 672-692. The score is written in treble clef with a key signature of one sharp (F#). The music consists of four staves of notation. The first staff (measures 672-677) features a melodic line starting with a trill on G4, followed by eighth notes and quarter notes. The second staff (measures 678-685) includes a double bar line with a fermata, followed by eighth notes and quarter notes, and another double bar line with a fermata. The third staff (measures 686-691) continues the melodic line with eighth notes and quarter notes. The fourth staff (measures 692) shows a final melodic phrase ending with a double bar line and repeat sign.