

Plop

Bölkstoff-Suite - Part 1

Fast Bop

U. Nehls 1999

Tuba

2

f

7

12

17

24

p

2

>

32

cresc.

39

46

mp

53

6

f

mp

65

Detailed description of the musical score: The score is written for a tuba in bass clef, 4/4 time, and B-flat major. It begins with a dynamic of *f* (forte) and a fermata over the first two measures. The music features a variety of rhythmic patterns, including eighth and sixteenth notes, and rests. Dynamics range from *f* to *mp* (mezzo-piano). There are several accents (*>*) and a crescendo (*cresc.*) starting at measure 39. A fermata is present at the end of measure 39. The score concludes with a dynamic of *mp* and a fermata over the final two measures.

71

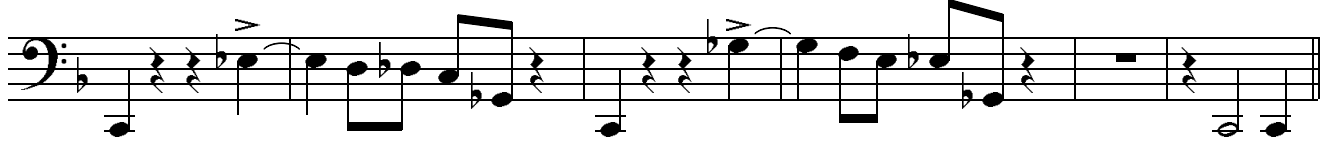


76

cresc.



81



87



93



97



102



111



117

