

Drums

MEDLEY

(Tröstet, tröstet, spricht der Herr/Morgen, Kinder, wird's was geben)

Ballad ♩ = 60

6

Drum notation for measures 6-13. Measure 6 starts with a *p* dynamic. Measures 7-13 contain various rhythmic patterns including eighth and sixteenth notes, and rests.

14

Drum notation for measures 14-20. Measure 14 includes a *p* dynamic and a 'fill' marked with an accent (^). Measures 15-20 continue with rhythmic patterns.

21

Drum notation for measures 21-25. Measure 21 includes a *p* dynamic and a 'fill' marked with an accent (^). Measure 22 includes a *f* dynamic and another 'fill' marked with an accent (^). Measure 23 is labeled 'more busy'. Measures 24-25 continue with rhythmic patterns.

26

Drum notation for measures 26-30. Measures 26-30 show a variety of rhythmic patterns, including eighth and sixteenth notes, and rests.

31

Drum notation for measures 31-34. Measures 31-34 continue with rhythmic patterns.

35

Drum notation for measures 35-38. Measures 35-38 continue with rhythmic patterns.

39

change to swing

Drum notation for measures 39-43. Measure 39 is labeled 'change to swing'. Measures 39-43 continue with rhythmic patterns.

44

Double time

Drum notation for measures 44-47. Measure 44 is labeled 'Double time'. Measures 44-47 continue with rhythmic patterns.

51

(SAXES)

Drum notation for measures 51-53. Measure 51 is labeled '(SAXES)'. Measures 51-53 continue with rhythmic patterns.

54

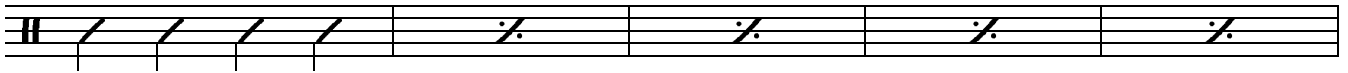
Drum notation for measures 54-57. Measure 54 includes a circled '8' above the staff. Measures 54-57 continue with rhythmic patterns.

58

Drum notation for measures 58-61. Measure 58 includes a circled '8' above the staff. Measures 58-61 continue with rhythmic patterns.

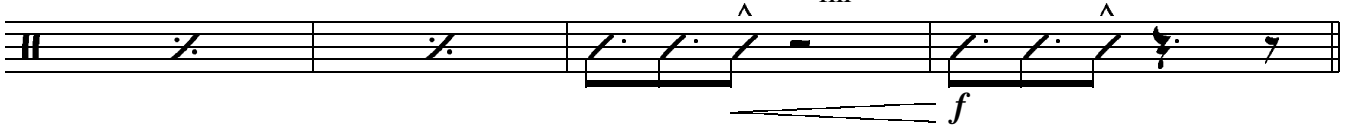
Drums

2 64 Tempo I



p

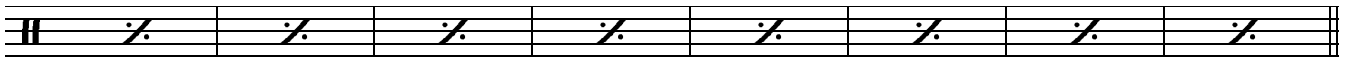
69



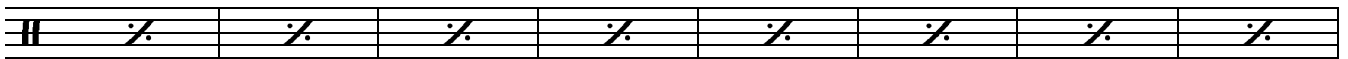
73 Uptempo swing SOLO



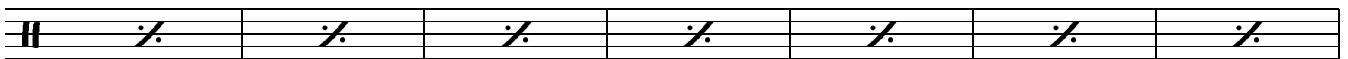
81 time



89



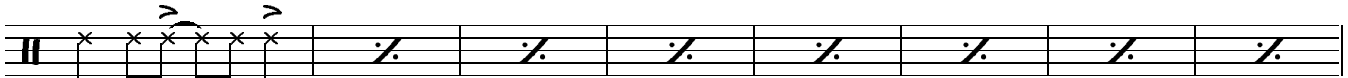
97



104



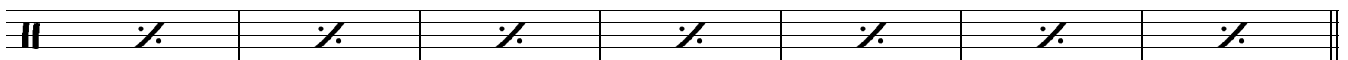
110



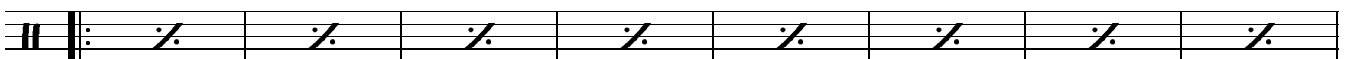
118



125

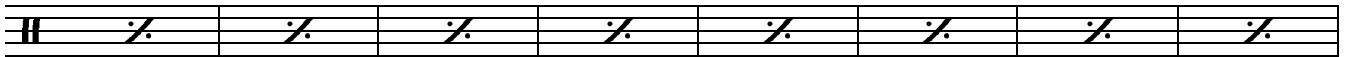


132 Solos

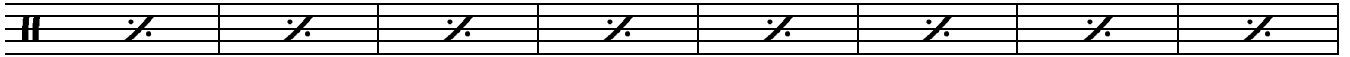


Drums

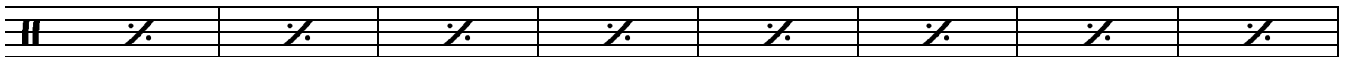
140



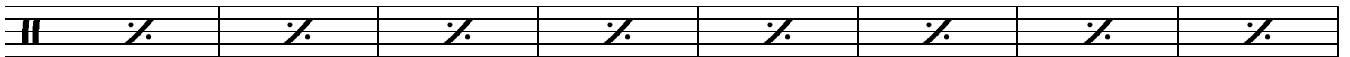
148 (+ background)



156



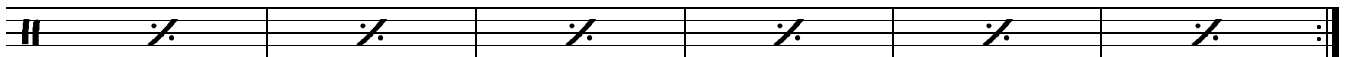
164 (tutti)



172

SOLO-FILL!!

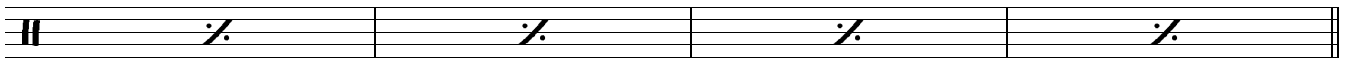
opt. repeat for more solos



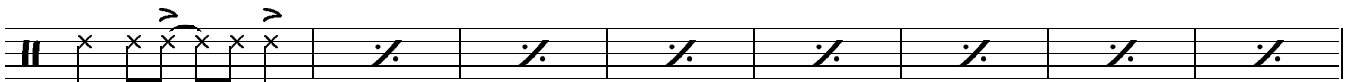
178

after Solos CONTINUE solo

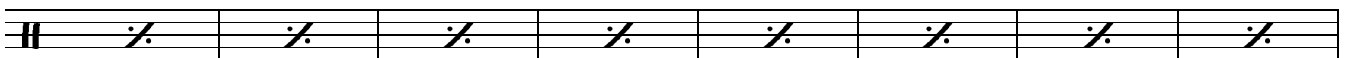
END Solo



182

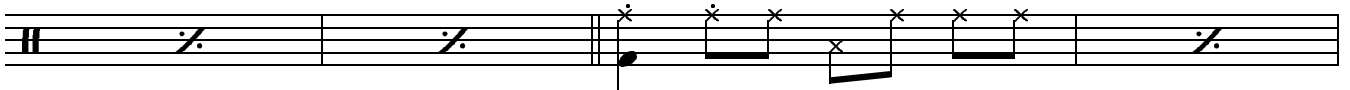


190



198

Half time



202

