

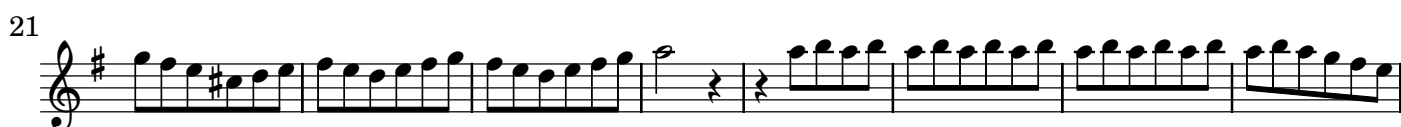
Concerto II à 2 Flûtes à Bec, 2 Flûtes Traversieres

Hau[t]bois ou Violons & Basse Continue

Haubois Primo

J. C. Pepusch (1667 – 1752)

[1.] Vivace



[2.] Grave



12



16



20



Musical notation for measures 12-22, featuring a treble clef, a key signature of two flats (B-flat and E-flat), and a common time signature. The notation includes various rhythmic values such as eighth and sixteenth notes, rests, and slurs. A dynamic marking '(b)' is present in measure 13.

[3.] Allegro

14



22



30



41



49



57



Musical notation for measures 6-64, featuring a treble clef, a key signature of one sharp (F#), and a 6/8 time signature. The notation includes various rhythmic values such as eighth and sixteenth notes, rests, and slurs. A dynamic marking '6' is present in measure 6, and a triplet marking '3' is present in measure 33.