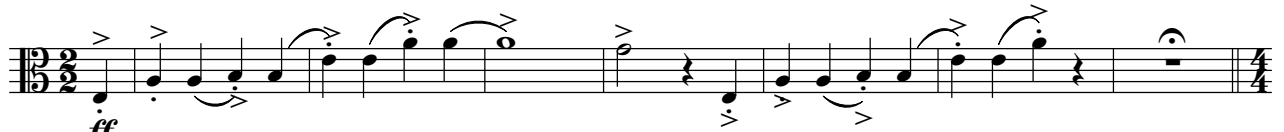


Paisagem Brasileira nº 5

Rio São Francisco

Rodrigo Vitta
abril/2006

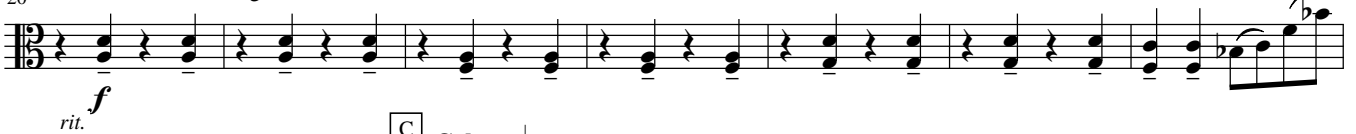
Com fogo ♩ = 140



A Calmo ♩ = 60



B Pouco animado ♩ = 140



C Calmo ♩ = 60



D Andante ♩ = 80



F Andante ♩ = 80

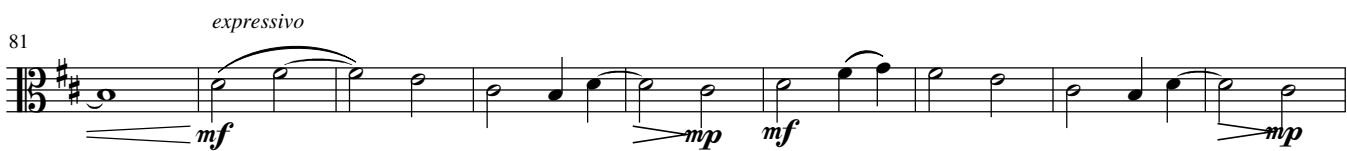


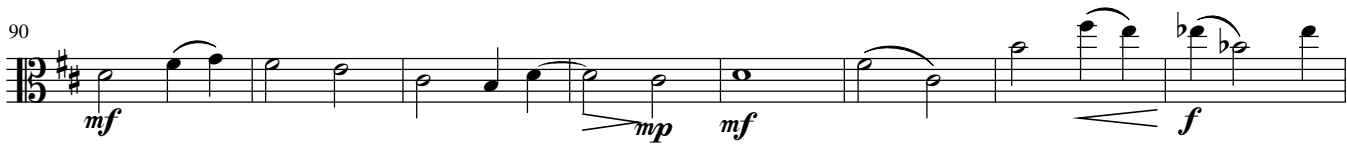
61 *rit.*

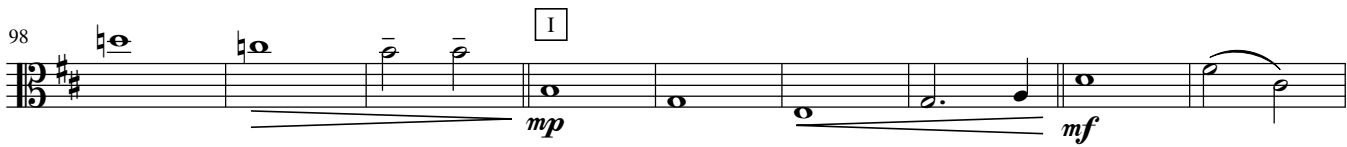

64 **G**

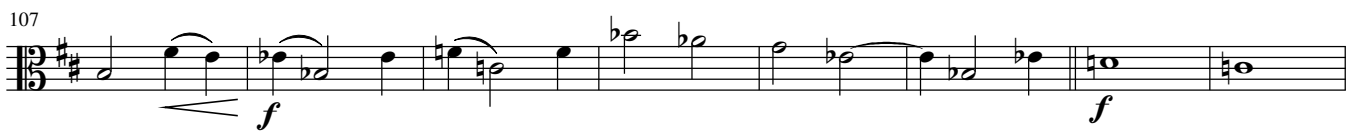

68

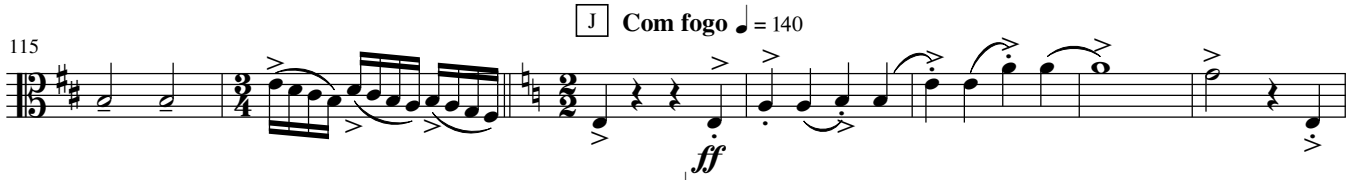

74 **H** *com precisão*


81 *expressivo*


90


98 **I**


107


115 **J** *Com fogo* ♩ = 140


122 **L** *Andante* ♩ = 80
pleno e límpido


131


139



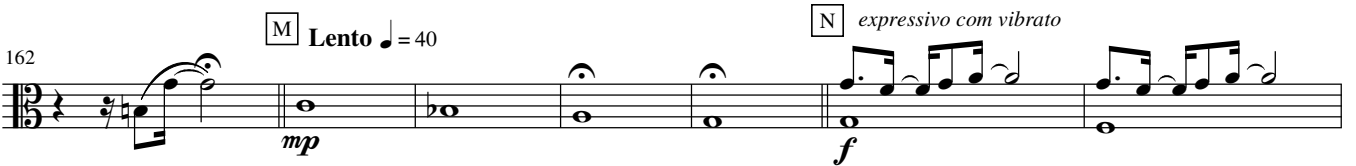
147



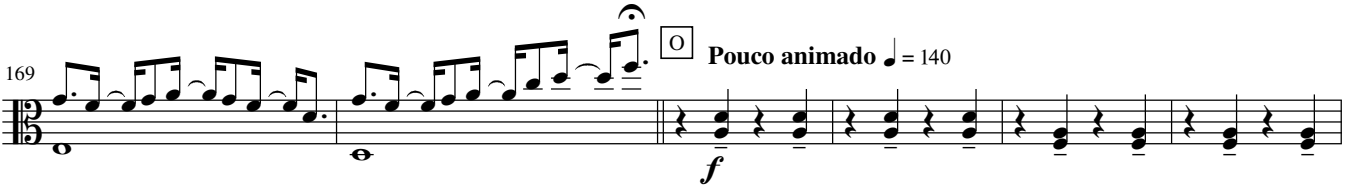
155



162



169



175



183

