

Ouverture Wassermusik [TWV 55:C3]

Viola

G. Ph. Telemann (1681-1767)

[1.] Ouverture

8

16

23

32

37

42

52

56

59

65

p:

Viola

69

74

78

81

86

90

93

97

104

1. 2.

[2.] Sarabande. Die schlaffende Thetis - doucement

6

19

p:

[3.] Bourrée. Die erwachende Thetis

Musical score for [3.] Bourrée. Die erwachende Thetis, Viola part. The score consists of five staves. The first two staves contain the main melody. The third and fourth staves are marked with a double bar line and the number 11, indicating a first ending. The fifth staff is marked with a double bar line and the number 15, indicating a second ending, and concludes with the instruction *D.C.*

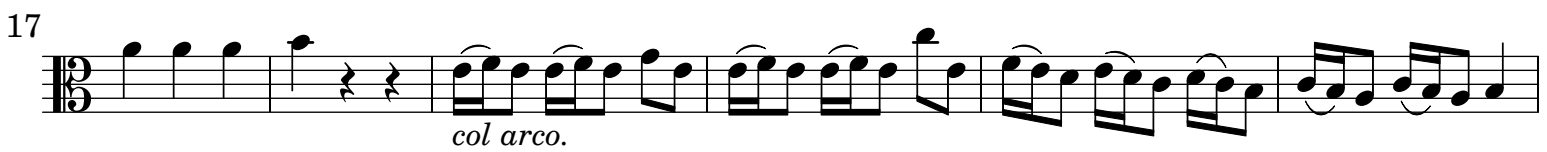
[4.] Loure. Der verliebte Neptunus

Musical score for [4.] Loure. Der verliebte Neptunus, Viola part. The score consists of three staves. The first staff begins at measure 8. The second staff begins at measure 16. The third staff concludes the piece with a double bar line.

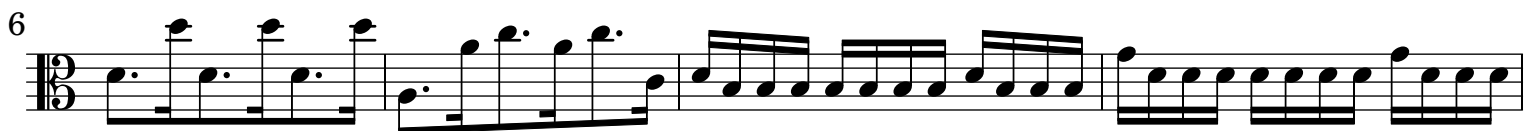
[5.] Die gegen verliebte Amphidritte. Gavotte

Musical score for [5.] Die gegen verliebte Amphidritte. Gavotte, Viola part. The score consists of six staves. The first staff begins at measure 5. The second staff begins at measure 11. The third staff begins at measure 16. The fourth staff begins at measure 21. The fifth staff begins at measure 27. The sixth staff concludes the piece with a double bar line and the instruction *Da C.*

[6.] Harlequinade. Die scherzenden Tritonen



[7.] Der stürmende Aeolus



19

22

28

33

36

39

42

45

[8.] Menuet. Der angenehme Zephir

1

10

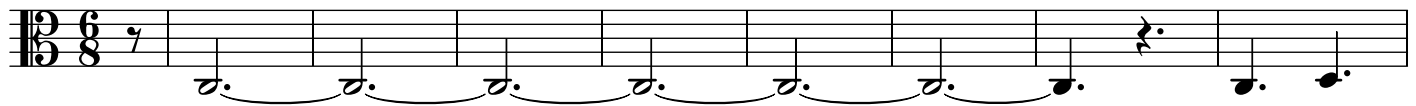
19

27

Fin

Da C.

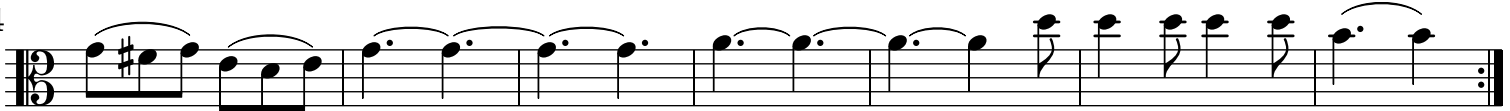
[9.] Gigue. Ebbe und Fluth



9



14



28



34



[10.] Canarie. Die lustigen Bootsleute



19



28

