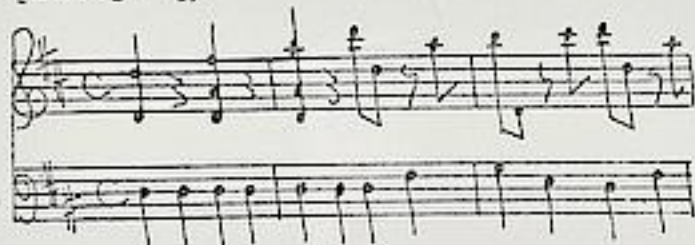


Brioschi, Antonio

BRD DS Mus.ms 121/6

D.#./SJNFONJA./à/2.Violini,/Viola/e/Basso./di/Brioschi./
[Incipit]/



Allegro ♩ D-dur - An-
dante ♩ d-moll - Presto
 ♩ 3/8 D-dur - Allegro ♩
D-dur - Presto ♩ 3/8 D-dur.

Ms.ca.1745 (Endler).

36 x 23,5 cm.

WZ: -

7 St.:vl 1(2x),2,vla,b(3x).
je 1 Bl.

Eine b-St.bez.

Mus 121
ms 6

D. #.

SINFONIA.

ã

2. Violini,

Viola

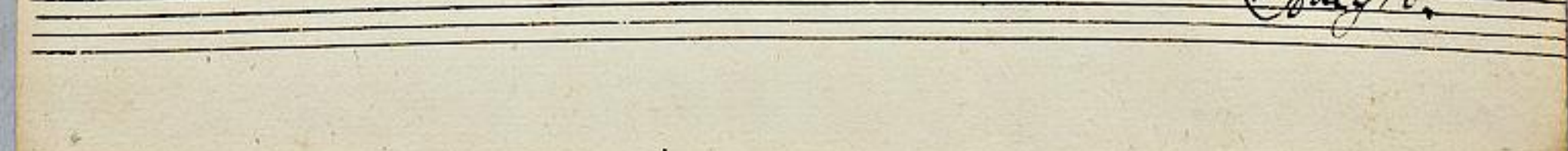
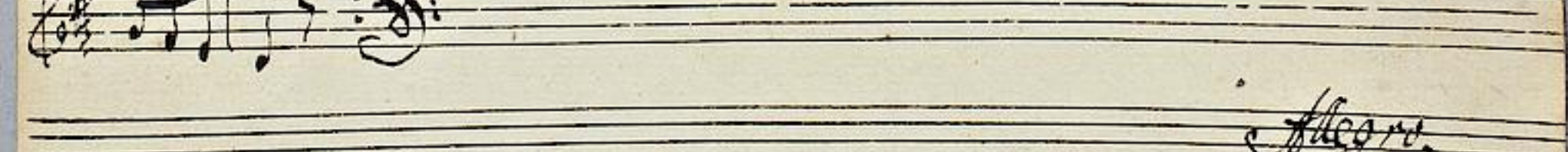
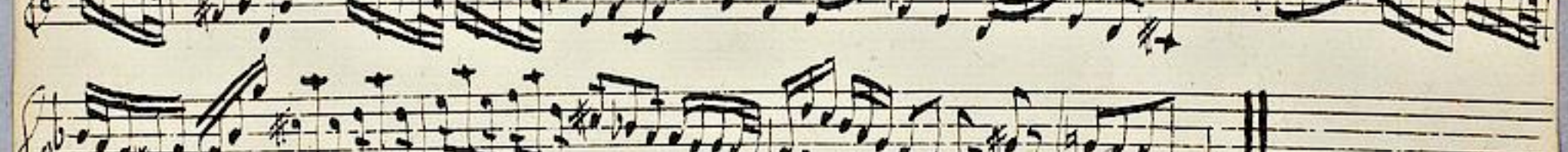
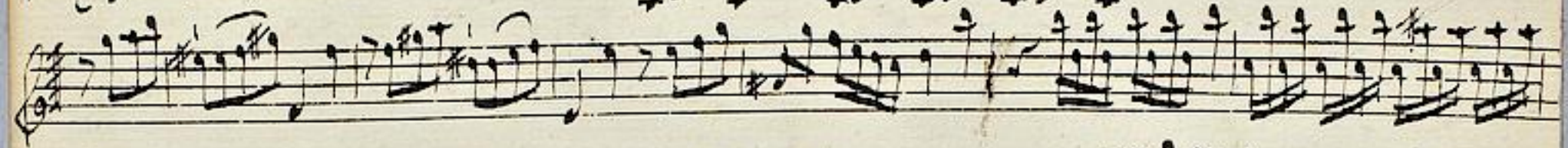
^e
Basso.

di

Brioschi.



Violino I.



Allegro.

Da Capo ||

Allegro.

Allegro.



Viola.

Allegro. $\frac{3}{4}$ C

Andante. $\frac{3}{4}$ C

Presto. $\frac{3}{4}$ C

Allegro.

Allegro. 

Presto. 


Basso.

Allegro. C $\frac{4}{4}$ C

Andante. C $\frac{4}{4}$ C

Fresto. C $\frac{3}{8}$ C

Allegro.

Allegro C 

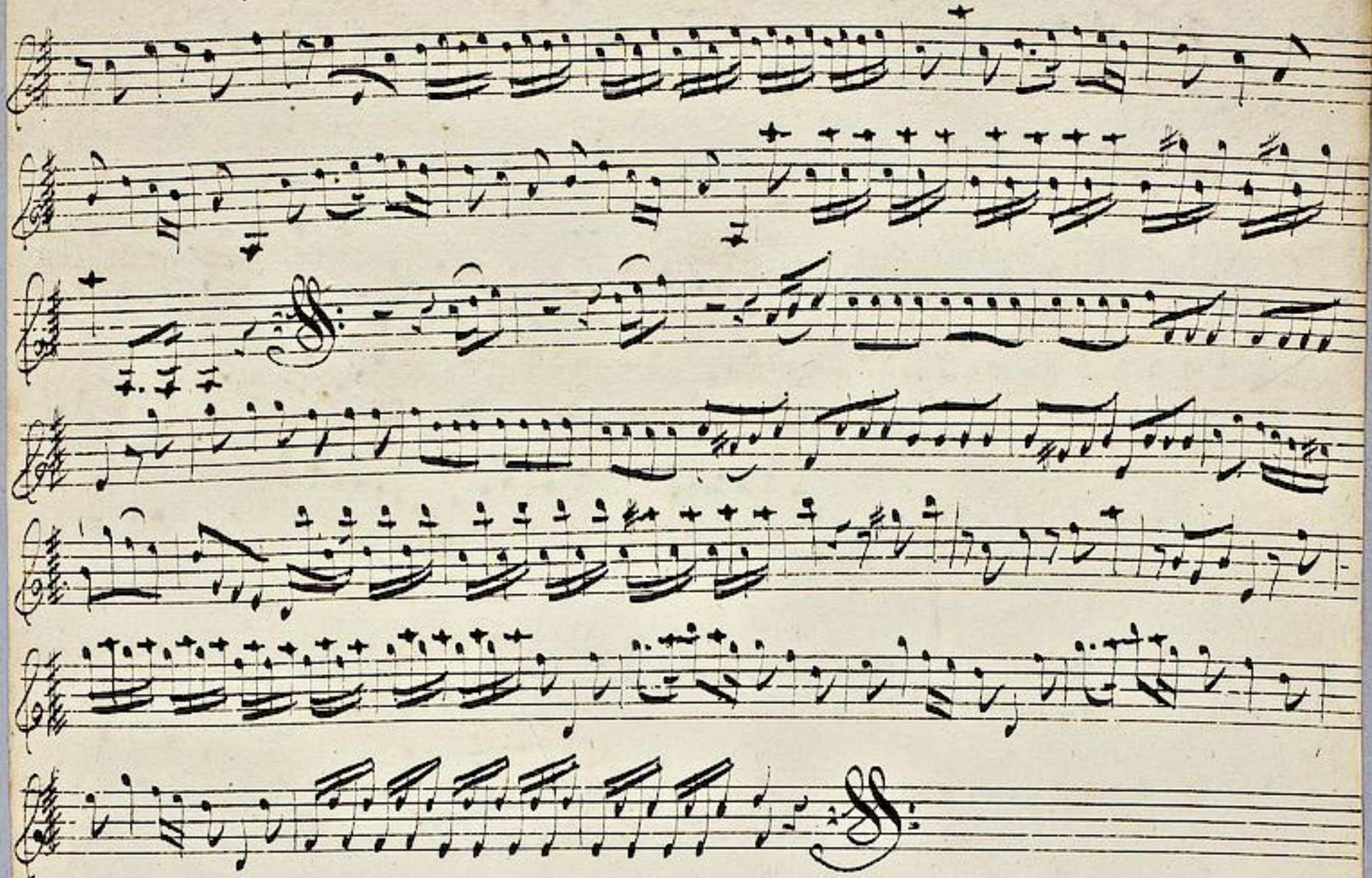
Da Capo ||

Andante C 


Handwritten signature

Violino 2.

Allegro. 



Andante. 



Presto 



Allegro.

Allegro.

Allegro.

Da Capo ||

Presto.

Allegro.

Basso.

Handwritten musical score for the first section, marked *Allegro.* and *Basso.* It consists of six staves of music in treble clef with a key signature of one sharp (F#). The notation includes various rhythmic values, accidentals, and fingerings.

Andante

Handwritten musical score for the second section, marked *Andante*. It consists of three staves of music in treble clef with a key signature of one sharp (F#). The tempo is slower than the first section.

Presto.

Handwritten musical score for the third section, marked *Presto.* It consists of two staves of music in treble clef with a key signature of one sharp (F#). The tempo is very fast.

Allegro.

Allegro

Handwritten musical score for 'Allegro'. The score consists of five staves of music. The first staff begins with a treble clef, a key signature of one sharp (F#), and a common time signature (C). The music is written in a cursive hand and includes various rhythmic values, accidentals, and fingerings. The second and third staves continue the melodic line. The fourth staff features a more complex rhythmic pattern with many sixteenth notes. The fifth staff concludes the piece with a double bar line and the text 'La Capell' written in a decorative, cursive script.

Handwritten musical score for 'Presto'. The score consists of two staves of music. The first staff begins with a treble clef, a key signature of one sharp (F#), and a 3/8 time signature. The music is written in a cursive hand and includes various rhythmic values, accidentals, and fingerings. The second staff continues the melodic line and ends with a double bar line. There is a scribble of ink on the right side of the page below the second staff.

Violino Primo

Allegro

Andante

Presto

Allegro

20
Allegro

Da Capo //

Treppo.

Basso.

Allegro

Handwritten musical score for the first section, 'Allegro'. It consists of seven staves of music. The first staff begins with a treble clef, a key signature of one sharp (F#), and a common time signature (C). The music is written in a cursive hand and includes various rhythmic values and accidentals.

Andante

Handwritten musical score for the second section, 'Andante'. It consists of three staves of music. The first staff begins with a treble clef, a key signature of one sharp (F#), and a common time signature (C). The music is written in a cursive hand and includes various rhythmic values and accidentals.

Presto

Handwritten musical score for the third section, 'Presto'. It consists of three staves of music. The first staff begins with a treble clef, a key signature of one sharp (F#), and a 3/8 time signature. The music is written in a cursive hand and includes various rhythmic values and accidentals.

Allegro

Allegro.

Handwritten musical score for the first system, consisting of five staves. The notation includes treble and bass clefs, a key signature of one sharp (F#), and a common time signature (C). The music features various rhythmic values and articulation marks. The system concludes with a double bar line and the word "Capo" written below the staff.

Presto

Handwritten musical score for the second system, consisting of two staves. The notation includes treble and bass clefs, a key signature of one sharp (F#), and a 3/8 time signature. The music is more rhythmic and ends with a double bar line and a flourish.