

# Missa 6 in D

## Kyrie

Johann David Heinichen

Fagott  
Violoncello/Violone

*Sostenuto*

4

7

10

13

16

20

24

Christe

29

34

40

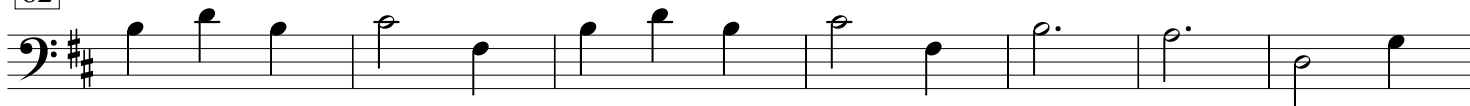
48



55



62



69



77



84



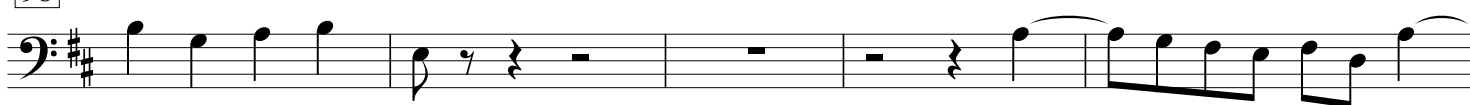
88



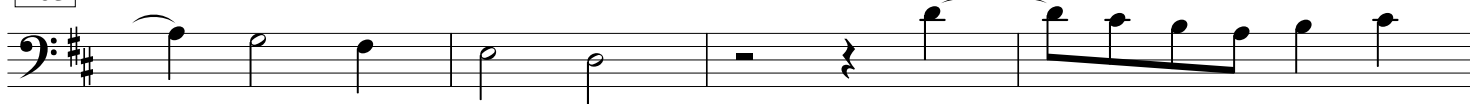
93



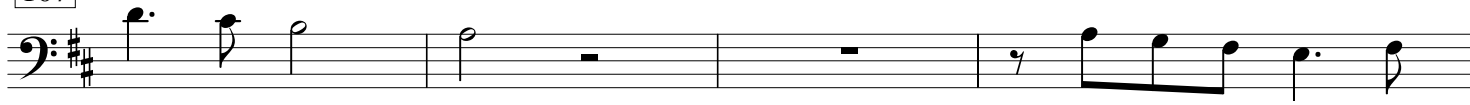
98



103



107



111



# Gloria

*Allegro assai*



7



11



15



21



25



29



32



37



43



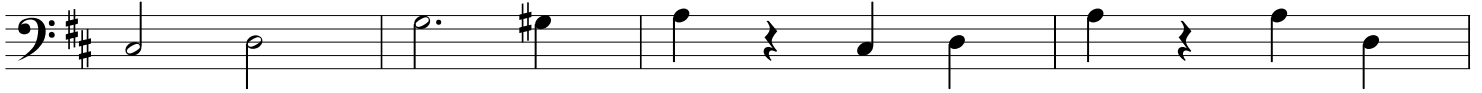
49



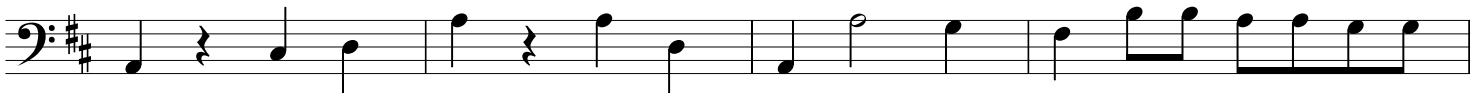
54



60



64



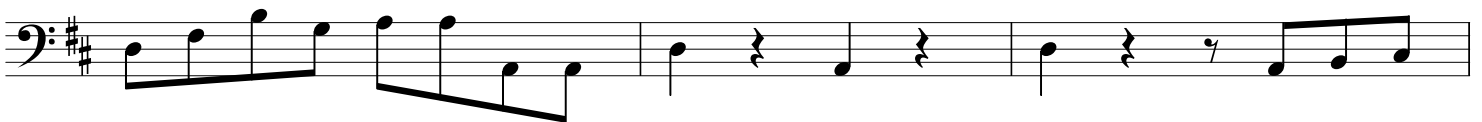
68



71



74



77

81 *Cantabile mà Andante*

85



89



93



97



101



105



109



113



117



121



126 **Qui tollis**

*p Violoncelli*

131

136

141

146

151

156

*Tutti i Bassi*

*f*

160

*p Violoncelli*

165

*Tutti i Bassi*

*p*

# Quoniam

170 *Andante con moto*

Measures 170-175: Bass clef, key signature of two sharps (F# and C#), common time signature. The music features a melodic line with dynamic markings *p* and *f*.

176 *senza Fagotti*

Measures 176-180: Bass clef, key signature of two sharps, common time signature. The music continues with a melodic line and a dynamic marking *p*.

Measures 180-185: Bass clef, key signature of two sharps, common time signature. The music continues with a melodic line.

185 *con Fagotti*

Measures 185-189: Bass clef, key signature of two sharps, common time signature. The music features a melodic line with a dynamic marking *f*.

189 *senza Fagotti*

Measures 189-193: Bass clef, key signature of two sharps, common time signature. The music features a melodic line with a dynamic marking *p*.

Measures 193-197: Bass clef, key signature of two sharps, common time signature. The music features a melodic line.

Measures 197-201: Bass clef, key signature of two sharps, common time signature. The music features a melodic line.

Measures 201-204: Bass clef, key signature of two sharps, common time signature. The music features a melodic line.

Measures 204-208: Bass clef, key signature of two sharps, common time signature. The music features a melodic line.

208 *Tutti i Bassi*

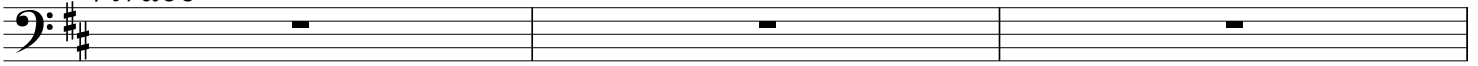
Measures 208-213: Bass clef, key signature of two sharps, common time signature. The music features a melodic line with dynamic markings *f* and *p*.

213 *Adagio*

Measures 213-217: Bass clef, key signature of two sharps, common time signature. The music features a melodic line with dynamic markings *f* and *p*.

**Cum Sancto Spiritu**

219

*Vivace*

222



225



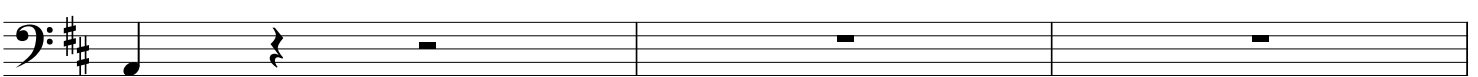
228



231



234



237



240



243

