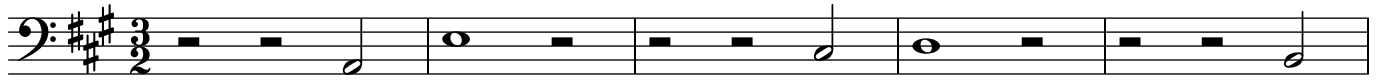


Sonata da Camera n. 3

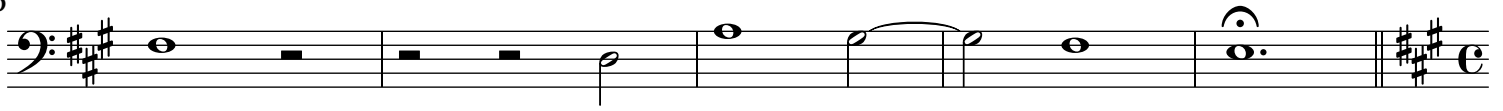
Basso

G. Muffat (1653-1704)

[1.] Grave

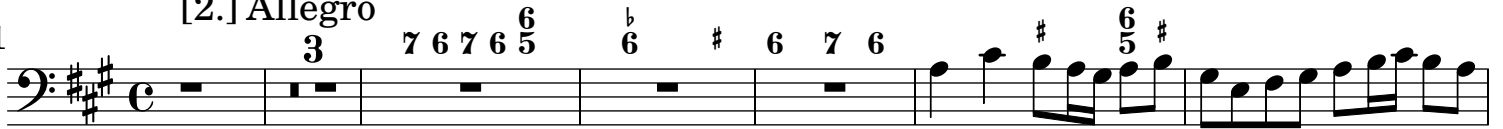


6



[2.] Allegro

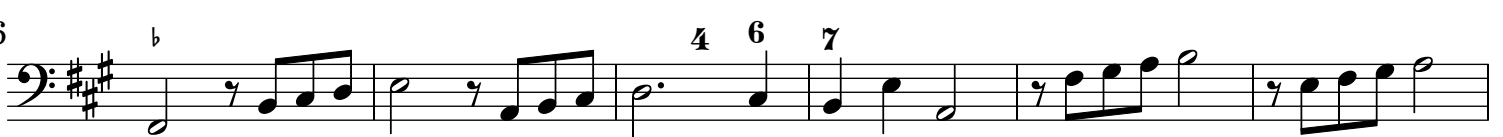
11



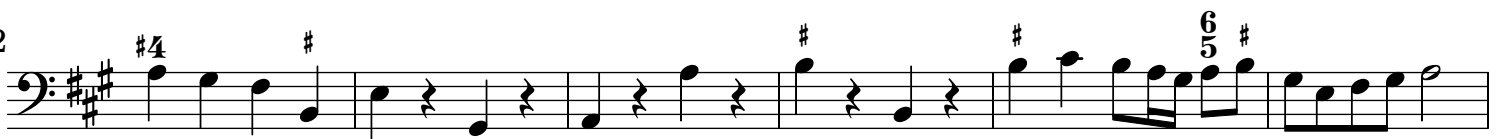
20



26



32



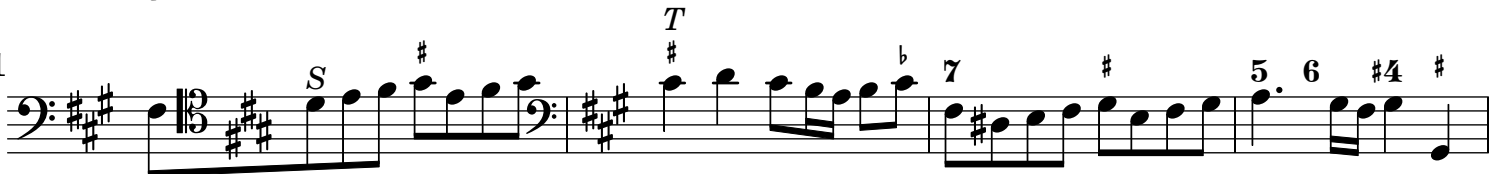
38



43



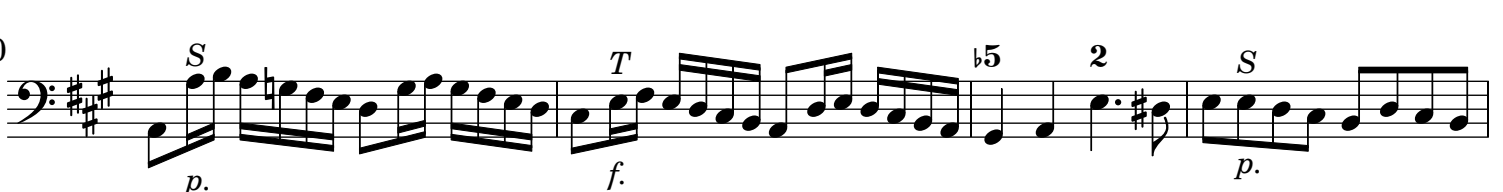
51



55



60



64 *f.* *T* *S* *p.* *T* *f.*

Musical staff 64-69 in G major, bass clef. It features a series of eighth-note patterns. Above the staff, there are fingering numbers: 4, b, #, b, #, b, #4. Dynamic markings include *f.*, *p.*, and *f.*. A trill (T) is marked above the first measure, and a mordent (S) is above the second measure.

70 *T* 7 # 7 5 4 #

Musical staff 70-74 in G major, bass clef. It continues with eighth-note patterns. Above the staff, there are fingering numbers: 7 #, 7 5, 4 #. A trill (T) is marked above the first measure.

75 # *S* *T*

Musical staff 75-79 in G major, bass clef. It continues with eighth-note patterns. Above the staff, there are fingering numbers: #, 5, 4, #. A mordent (S) is marked above the first measure, and a trill (T) is marked above the second measure.

80 *piano* 5 6 4

Musical staff 80-83 in G major, bass clef. It concludes with a few notes and a fermata. Above the staff, there are fingering numbers: 5, 6 4. The dynamic marking *piano* is present.

[3.] Corrente

4 b b5 6 # 6 6 6 6 6

Musical staff 1-4 in G major, bass clef, 3/4 time. It starts with a quarter rest followed by a quarter note. Above the staff, there are fingering numbers: 4, b, b5, 6, #, 6, 6, 6, 6, 6.

5 6 5 #6 6 6 6 6 5 *piano*

Musical staff 5-9 in G major, bass clef. It continues with quarter notes. Above the staff, there are fingering numbers: 6, 5, #6, 6, 6, 6, 6, 5. The dynamic marking *piano* is present.

6 5 # # 6 5 #5 #6

Musical staff 10-13 in G major, bass clef. It continues with quarter notes. Above the staff, there are fingering numbers: 6, 5, #, #, 6, 5, #5, #6.

14 6 6 6 6 6 *S* *piano*

Musical staff 14-17 in G major, bass clef. It concludes with a fermata. Above the staff, there are fingering numbers: 6, 6, 6, 6, 6. A mordent (S) is marked above the second measure. The dynamic marking *piano* is present.

[4.] Adagio

b # 6 #6 6 4 5 # *S* *T* 6 # 9 8 7 # 4 # b b

Musical staff 1-7 in G major, bass clef, common time. It features a series of quarter notes. Above the staff, there are fingering numbers: #, b, #, 6, #6, 6, 4, 5, #, #, 6, #, 9, 8, 7, #, 4, #, b, b. A mordent (S) is marked above the fourth measure, and a trill (T) is marked above the fifth measure.

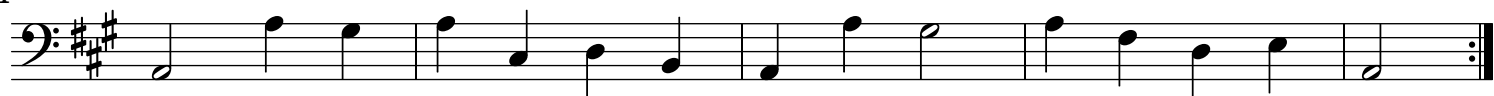
8 *t* 6 7 # b # b #4 7 6 4 #

Musical staff 8-11 in G major, bass clef. It concludes with a fermata. Above the staff, there are fingering numbers: 6, 7, #, b, #, b, #4, 7, 6, 4, #. A trill (T) is marked above the first measure.

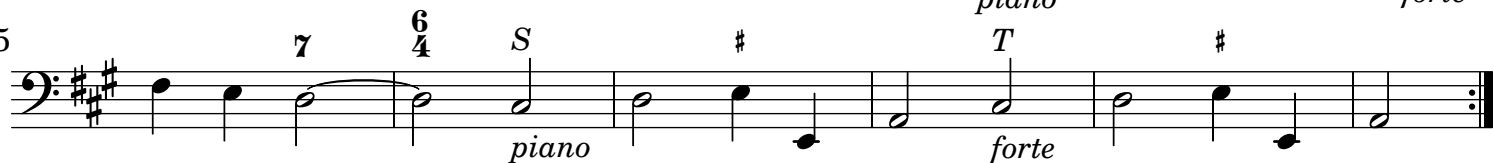
[5.] Gavotta



4



15



[6.] Rondeau

*piano*

10



21



31

*piano*

42



52



61



71

*piano*