

Aleksandr Shelomkov
Concerto for Piano and Orchestra (1985)

Corno II f

КОНЦЕРТ

для фортепиано с оркестром

А. Шеломков

Allegro, ma non troppo

1 2 3 4 5 6 7 8 9 10 11 12 13 14 15 16

v.ni. cor.

2

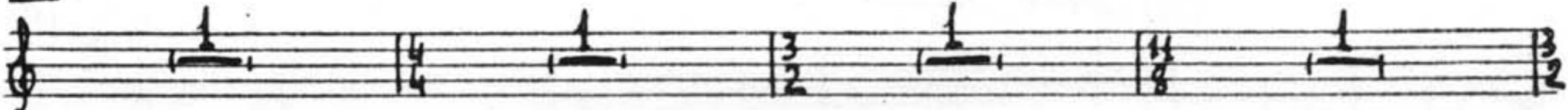
17 con sord.

Corno II

31 *Meno mosso*

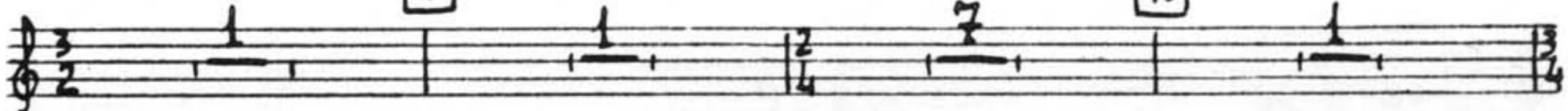
Musical score for Corno II, measures 31-43. The score is written on ten staves. Measure 31 is marked *Meno mosso*. Measure 32 has a dynamic marking *f*. Measure 33 has a dynamic marking *f*. Measure 34 has a dynamic marking *f*. Measure 35 has a dynamic marking *f*. Measure 36 has a dynamic marking *f*. Measure 37 has a dynamic marking *f*. Measure 38 has a dynamic marking *f*. Measure 39 has a dynamic marking *f*. Measure 40 has a dynamic marking *f*. Measure 41 has a dynamic marking *f*. Measure 42 has a dynamic marking *f*. Measure 43 has a dynamic marking *f*. The score includes various musical notations such as notes, rests, slurs, and dynamic markings. There are also some markings like *Cor. I* and *Cor. II* and *pp*.

44



45

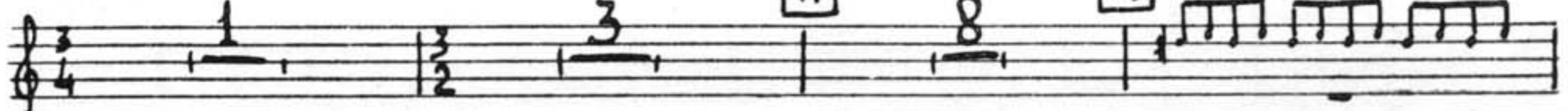
46



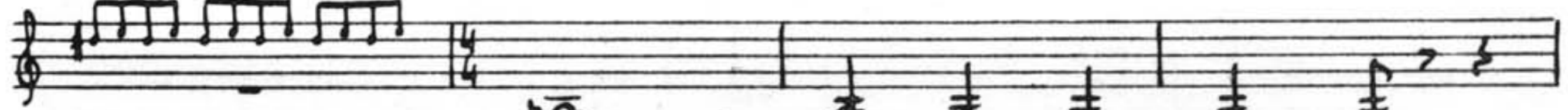
47

48

Celesta



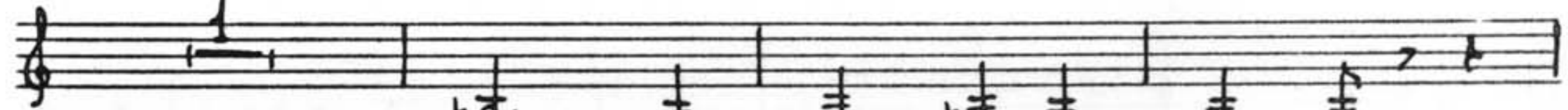
Cor.



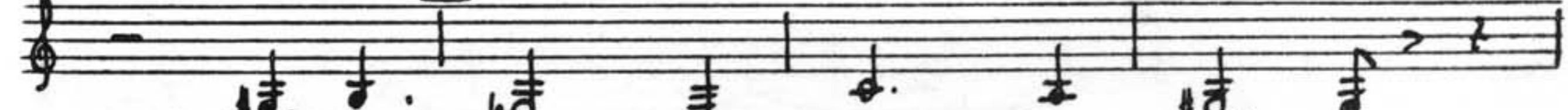
49



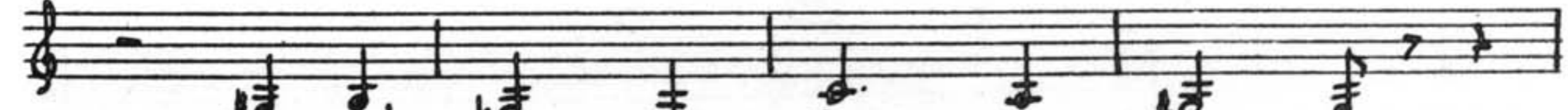
50



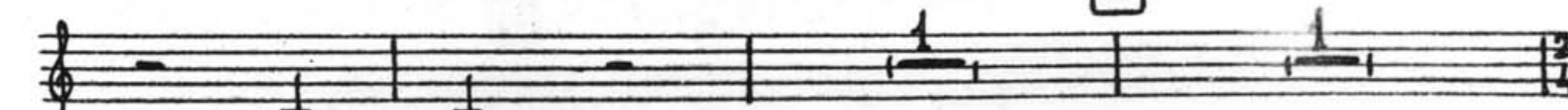
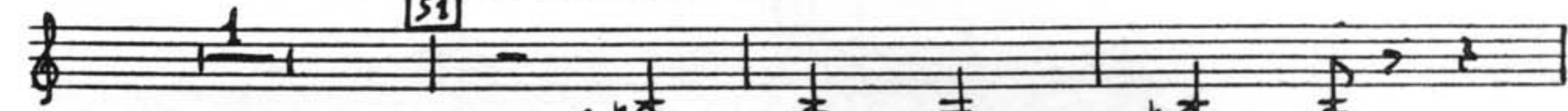
51



52



53



6

62

63 Fag.

64 Cor.

65

66

67 *p* con sord.

68

69

70

71

72 Senza sord. *p*

73

74

75 *cresc.*

76 *f*

Detailed description: This page of a musical score contains measures 62 through 76. It features two staves for woodwinds (Flute and Clarinet) and two staves for strings. The woodwinds play melodic lines with various articulations and dynamics, including *p* and *f*. The strings provide harmonic support with sustained notes and rhythmic patterns. Performance instructions include 'Fag.' (Fagotto), 'Cor.' (Corni), 'con sord.' (con sordina), 'Senza sord.' (senza sordina), and 'cresc.' (crescendo). Measure numbers are boxed and placed above the notes. A page number '6' is in the top left corner.

Handwritten musical score for a single melodic line, measures 77-91. The score includes various musical notations such as notes, rests, dynamics (f, pp), and performance instructions (Jr. ba I con Jord., Cor., Ord., marcato). Measure numbers 77 through 91 are boxed and placed above the corresponding measures.

Measures 77-80: Treble clef, 3/4 time signature. Measure 77 has a boxed number 77 above it. Measure 78 has a boxed number 78 above it. Measure 79 has a boxed number 79 above it and a dynamic marking *f*. Measure 80 has a boxed number 80 above it.

Measures 81-84: Treble clef, 3/4 time signature. Measure 81 has a boxed number 81 above it. Measure 82 has a boxed number 82 above it. Measure 83 has a boxed number 83 above it. Measure 84 has a boxed number 84 above it. A dynamic marking *pp* is present at the end of measure 82.

Measures 85-88: Treble clef, 4/4 time signature. Measure 85 has a boxed number 85 above it. Measure 86 has a boxed number 86 above it. Measure 87 has a boxed number 87 above it. Measure 88 has a boxed number 88 above it. Performance instructions *Jr. ba I con Jord.* and *Cor.* are present.

Measures 89-91: Treble clef, 4/4 time signature. Measure 89 has a boxed number 89 above it and a dynamic marking *f marcato*. Measure 90 has a boxed number 90 above it. Measure 91 has a boxed number 91 above it and a dynamic marking *f*. Performance instructions *Ord.* and *(marcato)* are present.

92 6 93
f marcato

94

95

96

97

98

99

100

101

102

103

104