

# 3 PIEZAS PARA OCTETO DE METALES

## Nº 1 ÇERCAVILA (Pasacalle)

Martín J. Rodríguez Peris

$\text{♩} = 120$   $\text{♩} = \text{♪}$

**A**

11

**B**

18

**B**

24

**B**

29

**C**

37

**D**

45 **2**  
*pp*

53 **3**  
*f*

60 **E**  
*p*

66

71 **3**  
*f*

76 **F**  
**2** **3**  
*p*

85 **G**  
**3** **3**  
**3/4** **C** **2/4**

91 **2** **3** **3** **4**  
*f*

100 **H**

*pp*

3

Detailed description: This musical staff covers measures 100 to 103. It begins with a treble clef, a key signature of one sharp (F#), and a common time signature. Measure 100 starts with a quarter rest followed by a quarter note. The melody consists of eighth and quarter notes. A dynamic marking of *pp* is placed below the first measure. A trill-like triplet of eighth notes is marked with a bracket and the number '3' above it in the final measure.

104

*p* *mf*

3

Detailed description: This musical staff covers measures 104 to 107. It continues with the same clef and key signature. The melody features a mix of eighth and quarter notes. A dynamic marking of *p* is at the start, and *mf* appears later. A triplet of eighth notes is marked with a bracket and the number '3' above it in the fourth measure.

108

*f*

Detailed description: This musical staff covers measures 108 to 111. The melody continues with eighth and quarter notes. A dynamic marking of *f* is placed below the fourth measure. Accents are placed over the final two notes of the staff.

112 **I**

*ff*

3 3 3 3

Detailed description: This musical staff covers measures 112 to 115. It begins with a treble clef, a key signature of one sharp, and a common time signature. Measure 112 starts with a quarter rest followed by a quarter note. A dynamic marking of *ff* is placed below the second measure. The staff contains four triplet markings, each with a bracket and the number '3' above it, covering measures 113 through 115.

116

3 3 3 3 3 3 3 3

Detailed description: This musical staff covers measures 116 to 118. It features a long, sweeping slur over the entire staff. The melody is composed of eighth notes, with eight triplet markings (bracket and '3') placed above the notes in measures 116 and 117. The staff ends with a quarter rest followed by a quarter note.

119

*f*

Detailed description: This musical staff covers measures 119 and 120. It begins with a treble clef, a key signature of one sharp, and a common time signature. The melody consists of quarter notes with accents. A dynamic marking of *f* is placed below the first measure. The staff concludes with a double bar line and a common time signature.

## N° 2 L'HORT VIVANCO

(El misterio y la luz)

122  $\text{♩} = 48$

*f* *pp* *f* *pp* *ff*

128 **J**

*pp* *p* **3**

136 *p* *f*

141 *ff* *pp*

147 **K**  $\text{♩} = 64$

*f* *mf* *pp* *sf*

153 *pp*

159 *pp*

165 **L**

*f*

171

*mf*

176

**M**

*p*

182

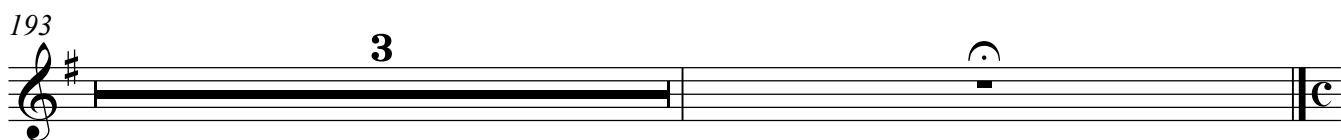
187

*f*

*p*

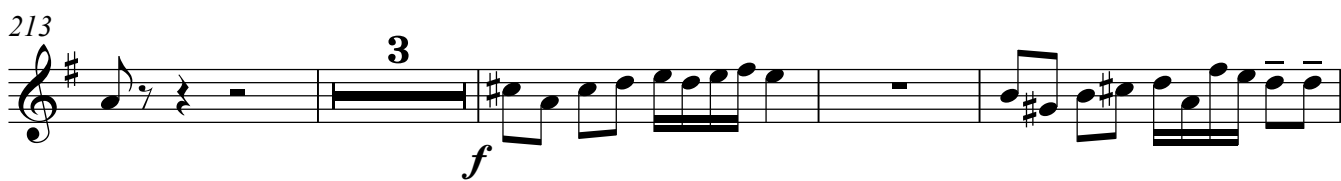
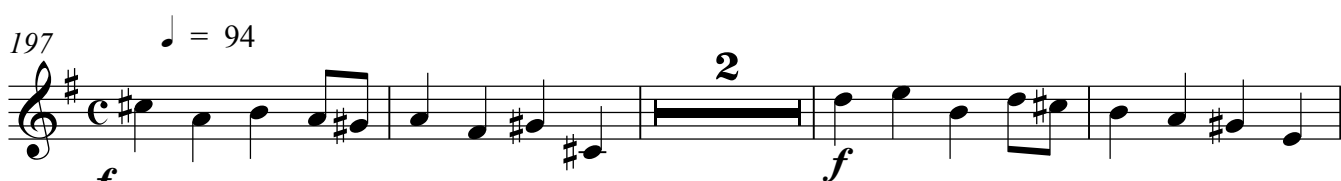
190

**Mas lento**



## Nº 3 EL PASSEIG

(Lo tradicional)



236 Q

*f* *símil*

241

*f*

246

251 R

256

260

*símil*

263

267

Molto rit.