

Duo pour 2 violoncelles op.52 n°1

Violoncelle II

Jacques OFFENBACH

(1819-1880)

Allegro

7

14

21

28

36

43

48

54

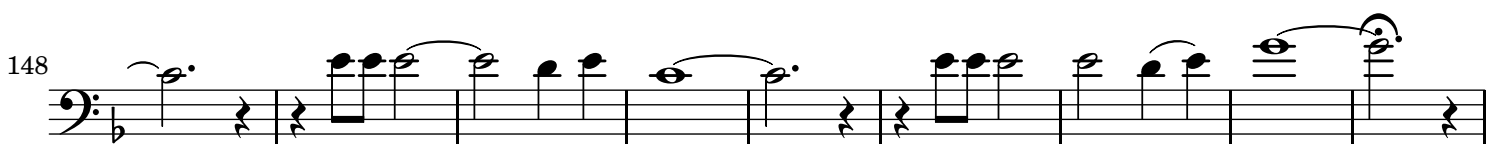
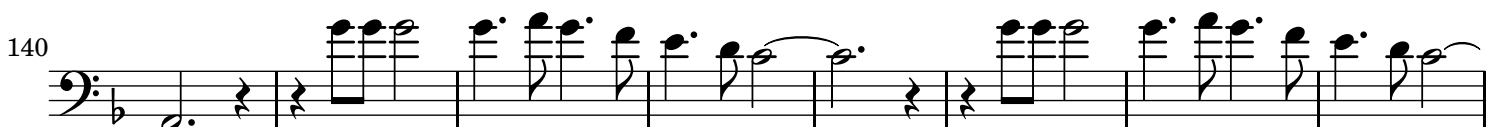
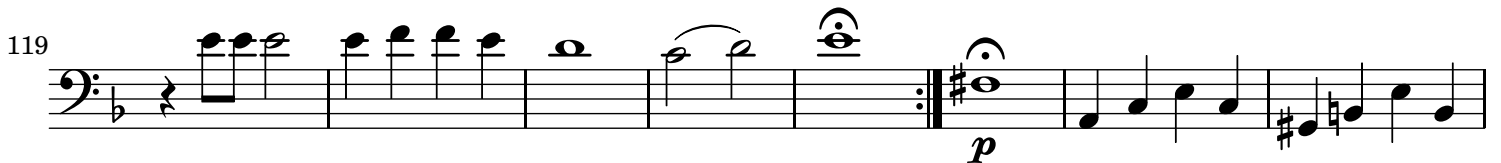
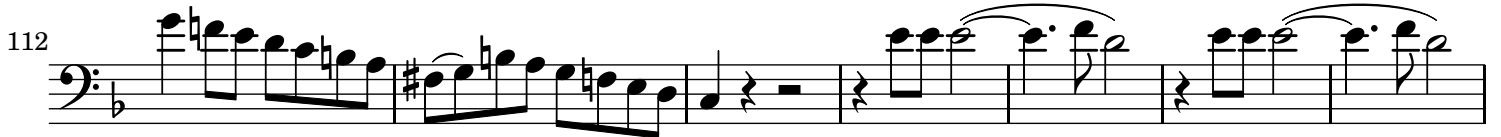
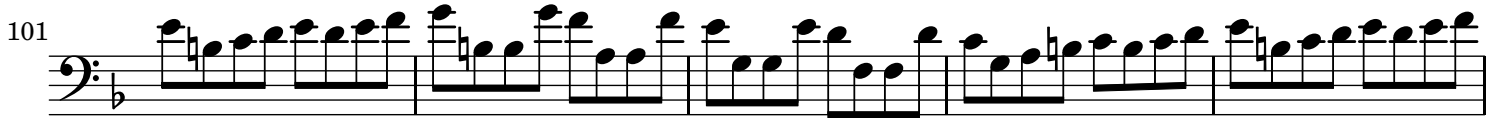
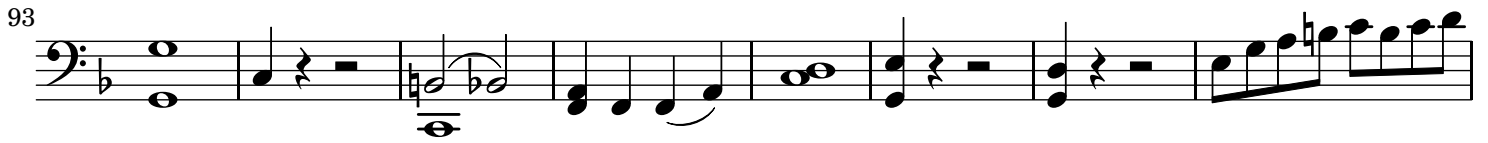
61

p

f

f *p*

f *p* *pp*



157

164

171

178

185

191

199

207

215

220

225

231

239

f

f

p

1

f

Detailed description: This page of a musical score for Violoncelle II contains measures 157 through 239. The music is written in bass clef with a key signature of one flat (B-flat). The score is divided into systems of staves. Measure 157 begins with a series of eighth notes. Measures 164 and 171 show some rests. Measure 178 features a dynamic marking of *f* (forte). Measure 185 has a dynamic marking of *f* and includes a complex rhythmic pattern with many beamed notes. Measure 191 has a dynamic marking of *p* (piano). Measure 231 includes a first ending bracket labeled '1'. Measure 239 ends with a dynamic marking of *f*.

247



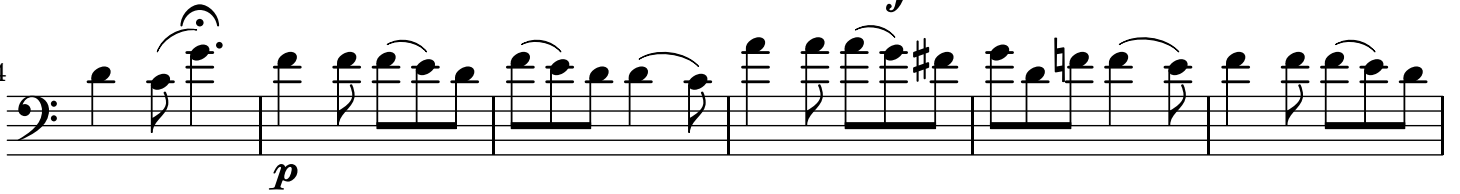
Adagio



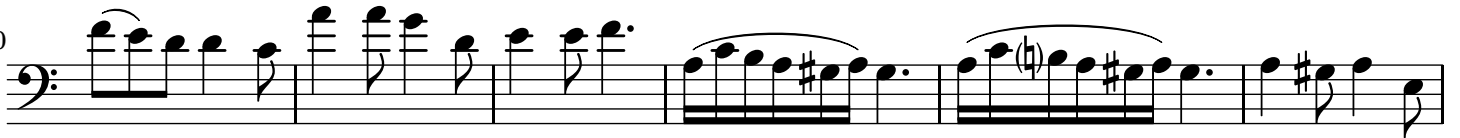
7



14



20



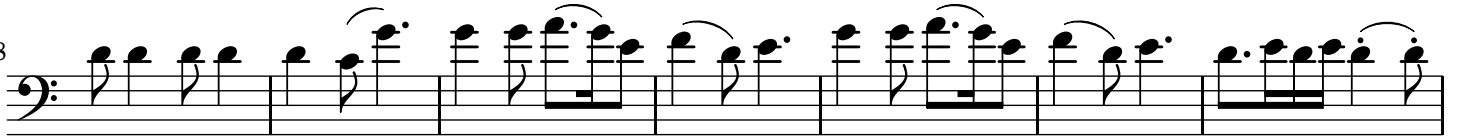
26



32



38



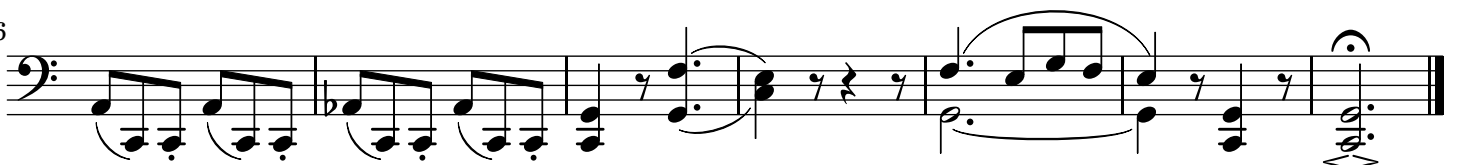
45



51



56



Allegretto

Rondo

p

8

16 *f* *p* *f* *rall.*

25 *p* *f* *p*

34

42

52

61 *p*

71

81 *p*

90

101

111

120

rall. *très lent* **a tempo**

131

141

152

160

170

181

190

200

1

212

220

f **f**