

Wie wunderbar ist Gottes Gü't

Aria 1

GWV 1103/17

Christoph Graupner

Violini unis.

Violine

80

Musical staff 80-88 in G major, 6/8 time. It begins with a half note G4, followed by quarter notes A4, B4, C5, D5, E5, F#5, and G5. A fermata is placed over the G5. The staff then has a whole rest for two measures, followed by eighth notes G4, A4, B4, C5, D5, E5, and F#5.

89

Musical staff 89-96 in G major, 6/8 time. It starts with a half note G4, followed by a quarter rest, then eighth notes G4, A4, B4, C5, D5, E5, and F#5. A fermata is over the F#5. The staff continues with a whole rest for two measures, then eighth notes G4, A4, B4, C5, D5, E5, and F#5. A fermata is over the F#5. The staff ends with a whole rest for two measures.

da capo

Aria 2 tacet

Choral

Musical staff 1-6 in G major, 6/8 time. It features a continuous eighth-note pattern: G4, A4, B4, C5, D5, E5, F#5, G5. A fermata is over the F#5. The staff continues with eighth notes G4, A4, B4, C5, D5, E5, and F#5. A fermata is over the F#5. The staff ends with eighth notes G4, A4, B4, C5, D5, E5, and F#5.

7

Musical staff 7-12 in G major, 6/8 time. It features a continuous eighth-note pattern: G4, A4, B4, C5, D5, E5, F#5, G5. A fermata is over the F#5. The staff continues with eighth notes G4, A4, B4, C5, D5, E5, and F#5. A fermata is over the F#5. The staff ends with eighth notes G4, A4, B4, C5, D5, E5, and F#5.

13

Musical staff 13-17 in G major, 6/8 time. It features a continuous eighth-note pattern: G4, A4, B4, C5, D5, E5, F#5, G5. A fermata is over the F#5. The staff continues with eighth notes G4, A4, B4, C5, D5, E5, and F#5. A fermata is over the F#5. The staff ends with eighth notes G4, A4, B4, C5, D5, E5, and F#5.

18

Musical staff 18-21 in G major, 6/8 time. It features eighth notes G4, A4, B4, C5, D5, E5, and F#5. A fermata is over the F#5. The staff continues with eighth notes G4, A4, B4, C5, D5, E5, and F#5. A fermata is over the F#5. The staff ends with eighth notes G4, A4, B4, C5, D5, E5, and F#5.

22

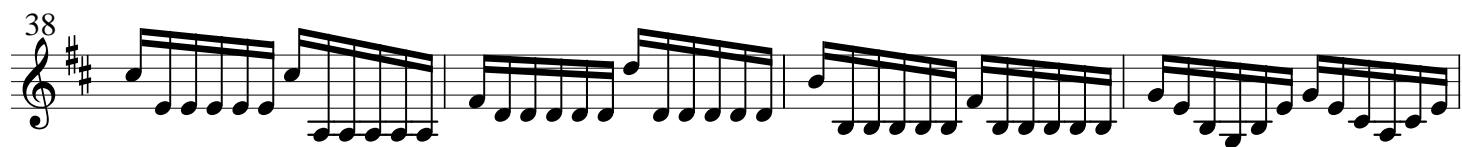
Musical staff 22-25 in G major, 6/8 time. It features eighth notes G4, A4, B4, C5, D5, E5, and F#5. A fermata is over the F#5. The staff continues with eighth notes G4, A4, B4, C5, D5, E5, and F#5. A fermata is over the F#5. The staff ends with eighth notes G4, A4, B4, C5, D5, E5, and F#5.

26

Musical staff 26-29 in G major, 6/8 time. It features eighth notes G4, A4, B4, C5, D5, E5, and F#5. A fermata is over the F#5. The staff continues with eighth notes G4, A4, B4, C5, D5, E5, and F#5. A fermata is over the F#5. The staff ends with eighth notes G4, A4, B4, C5, D5, E5, and F#5.

30

Musical staff 30-33 in G major, 6/8 time. It features eighth notes G4, A4, B4, C5, D5, E5, and F#5. A fermata is over the F#5. The staff continues with eighth notes G4, A4, B4, C5, D5, E5, and F#5. A fermata is over the F#5. The staff ends with eighth notes G4, A4, B4, C5, D5, E5, and F#5.

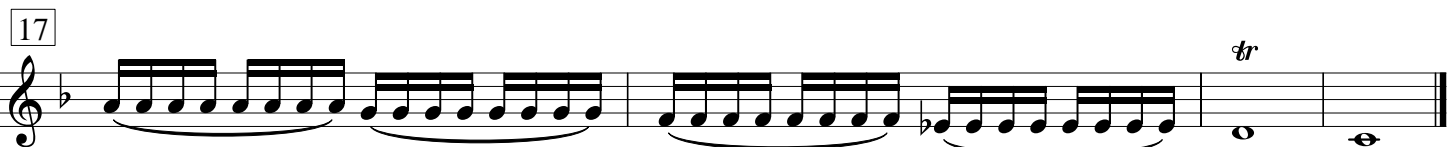
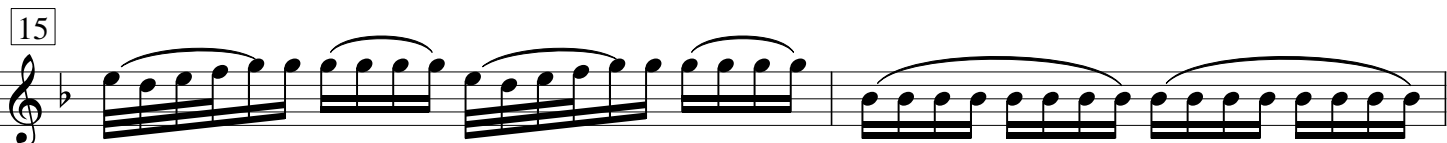
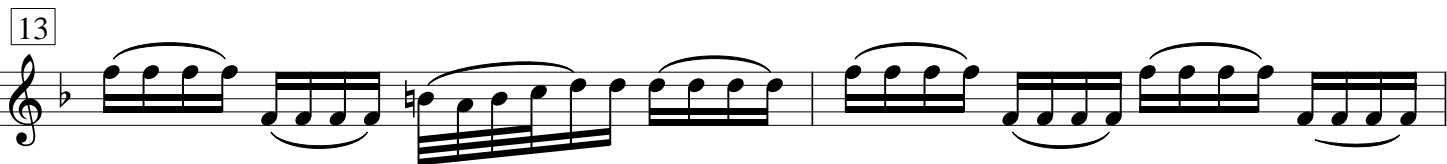
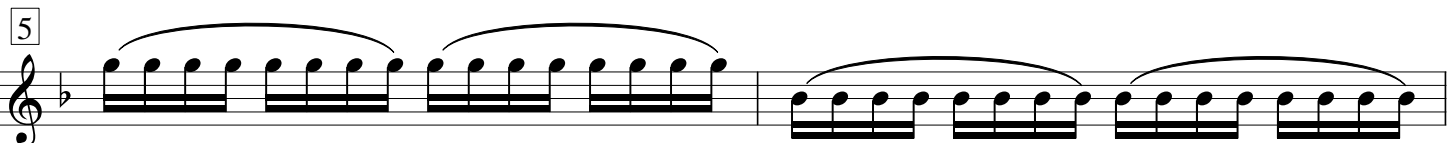


Leerseite

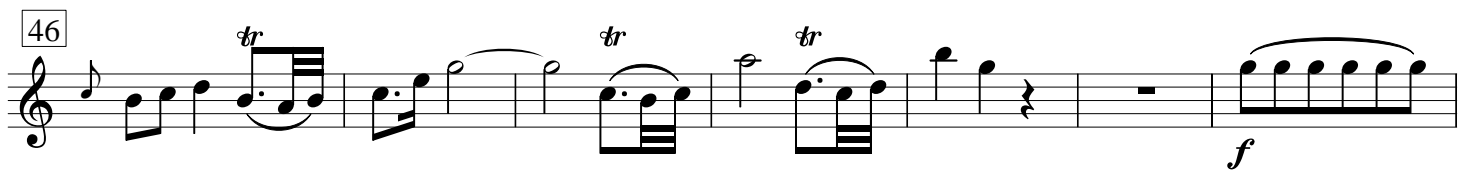
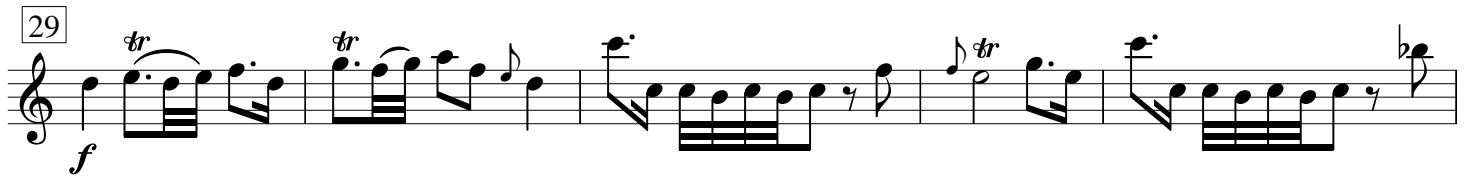
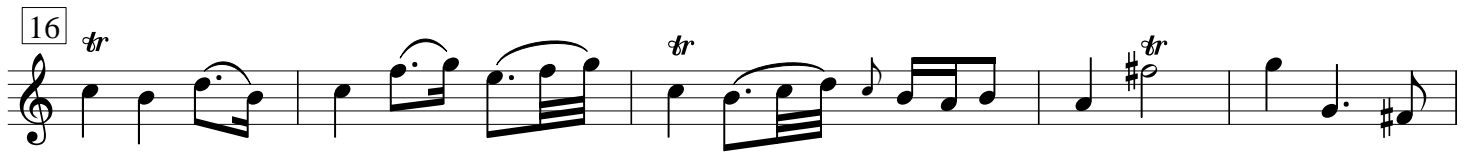
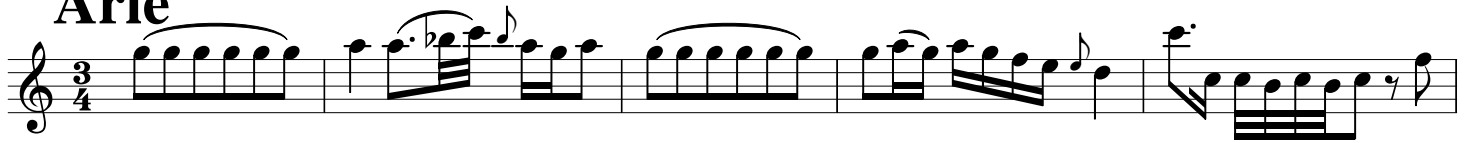
Fahre auf in die Höhe

1146/46

Dictum



Arie



59 *tr*

67 *tr*

74

81 *tr*

da capo

Choral

Largo

5 *tr*

9 *tr*

13 *tr*

17

20 *tr*

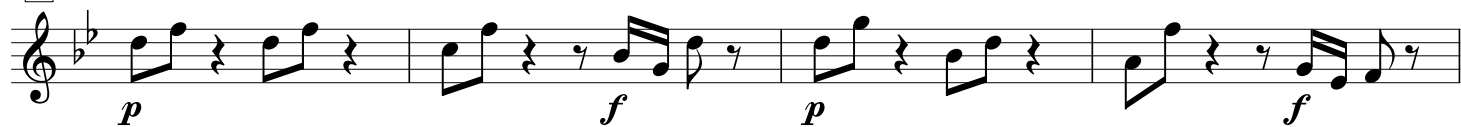
Auf Zion!

GWV 1101/53

Aria



5



9



13



16



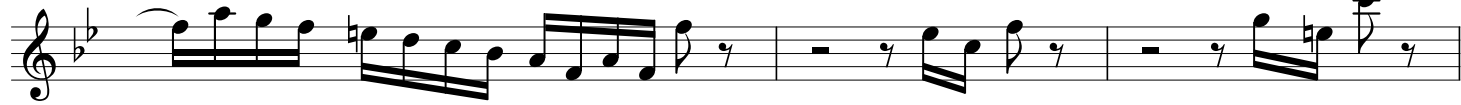
19



22



25



28



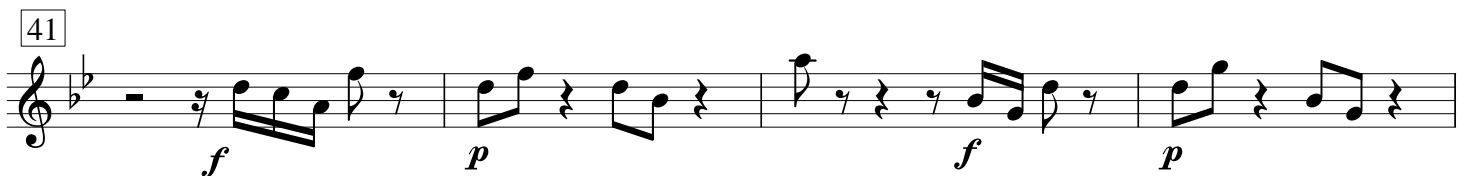
31



34



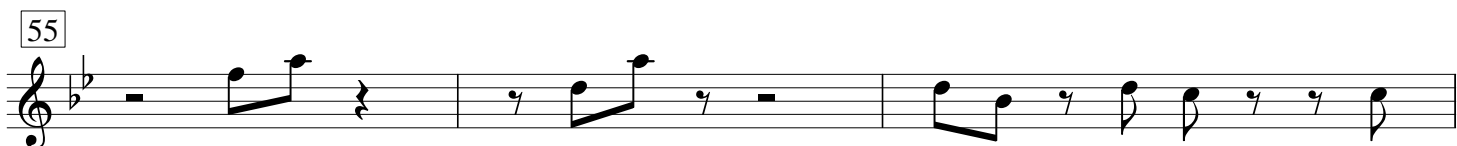
37  *f*

41  *f* *p* *f* *p*

45  *f* *p*

49  *f* *tr*

52 

55 

58 

61  *f*

65 

da capo