

# 3 German Dances

Double Bass

W. A. Mozart  
arr. Jane Thomas

## No. 1

8 *f*

9 *p* *f* Fine

Musical notation for No. 1, measures 1-17. The key signature is one sharp (F#) and the time signature is 3/4. The notation includes a forte (*f*) dynamic at measure 1 and a piano (*p*) dynamic at measure 9. The piece ends with a double bar line and repeat dots.

## Trio

18 *p*

27 *f* *p* D.C. al Fine

Musical notation for the Trio section, measures 18-26. The key signature is one sharp (F#) and the time signature is 3/4. The notation includes a piano (*p*) dynamic at measure 18 and a forte (*f*) dynamic at measure 27. The section ends with a double bar line and repeat dots.

## No. 2

8 *f*

9 Fine

Musical notation for No. 2, measures 1-8. The key signature is one sharp (F#) and the time signature is 3/4. The notation includes a forte (*f*) dynamic at measure 1. The piece ends with a double bar line and repeat dots.

## Trio

Pizz.

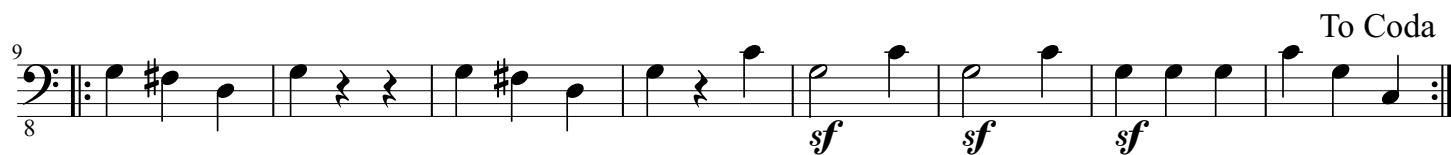
17

arco

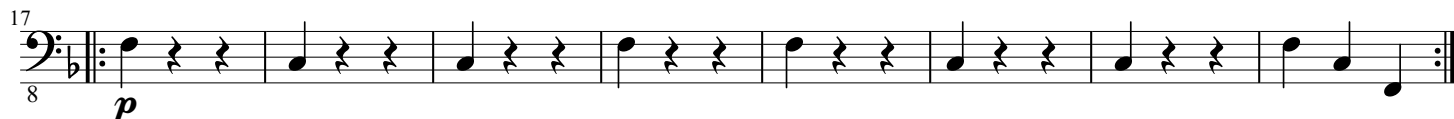
25 *f* D.C. al Fine

Musical notation for the Trio section, measures 9-24. The key signature is one sharp (F#) and the time signature is 3/4. The notation includes a pizzicato (*Pizz.*) instruction at measure 17 and an arco instruction at measure 25. The section ends with a double bar line and repeat dots.

# No. 3



## Trio



## Coda

