

Concerto VI

Tomaso Albinoni
op. 5 No. 6

Violino 1

Allegro

4

8

11

14

17

20

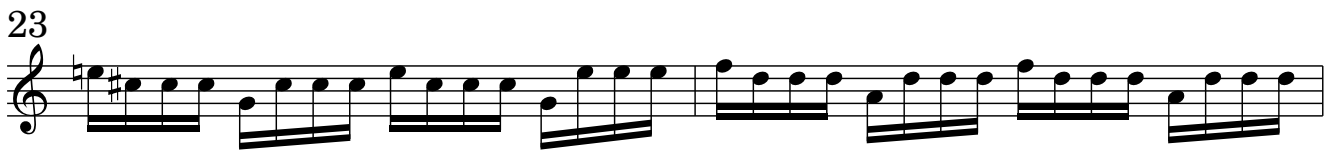
23

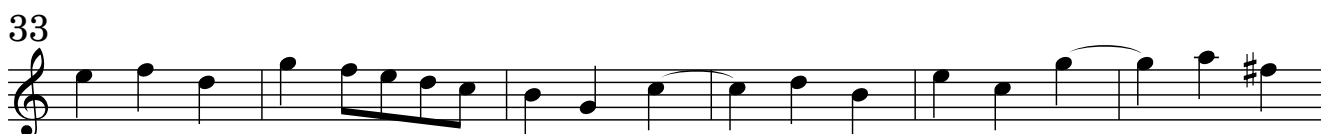
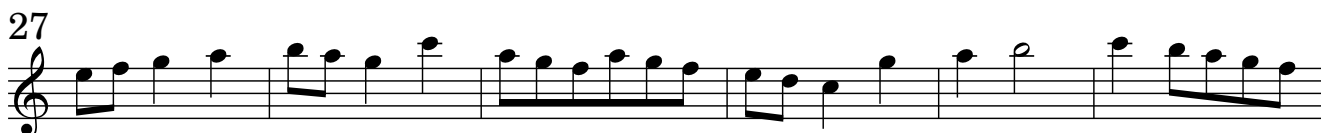
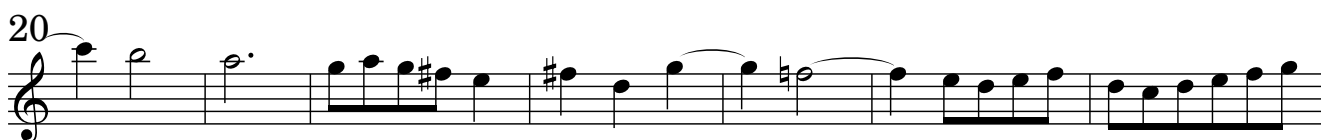
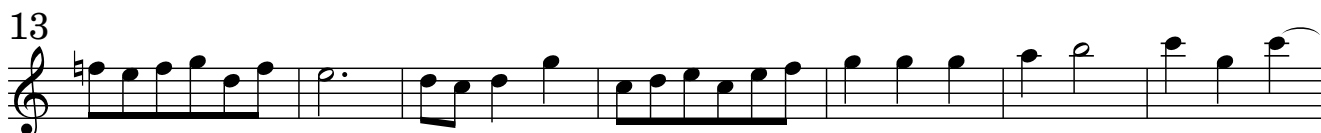
26

29

p *f* *p* *f* *p*

Adagio



Allegro

72

78

83

88

93

100

106

112

117

121

126

The image displays a musical score for Violino 1, consisting of ten staves of music. Each staff begins with a measure number: 72, 78, 83, 88, 93, 100, 106, 112, 117, and 126. The music is written in treble clef and features a variety of rhythmic patterns, including eighth and sixteenth notes, as well as rests and slurs. The key signature is one sharp (F#), and the time signature is 4/4. The score concludes with a double bar line at the end of the final staff.

Concerto VI

Tomaso Albinoni
op. 5 No. 6

Violino 2

Allegro

4

7

11

14

17

21

25

29

33

38

p *f* *p* *f* *p* *f*

42



45

48

51

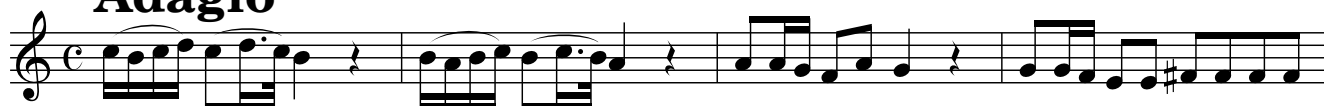
p *f*

54

57

59

Detailed description: This section contains seven staves of musical notation for measures 42 through 59. The notation is in treble clef with a common time signature. Measures 42-53 feature a complex rhythmic pattern of eighth and sixteenth notes, with dynamic markings *p* (piano) and *f* (forte) appearing at measures 51 and 52 respectively. Measures 54-59 continue with similar rhythmic patterns, ending with a final note on a whole note.

Adagio

Detailed description: This staff shows measures 1-4 of the Adagio section. It begins with a treble clef and a common time signature. The music consists of eighth notes with a dotted quarter note, followed by a quarter note, and then a half note. The key signature has one sharp (F#).

Presto

5



Detailed description: This staff shows measures 5-11 of the Presto section. It begins with a treble clef and a common time signature. The music consists of quarter notes with a dotted quarter note, followed by a quarter note, and then a half note. The key signature has one sharp (F#).

12



Detailed description: This staff shows measures 12-18 of the Presto section. It begins with a treble clef and a common time signature. The music consists of quarter notes with a dotted quarter note, followed by a quarter note, and then a half note. The key signature has one sharp (F#).

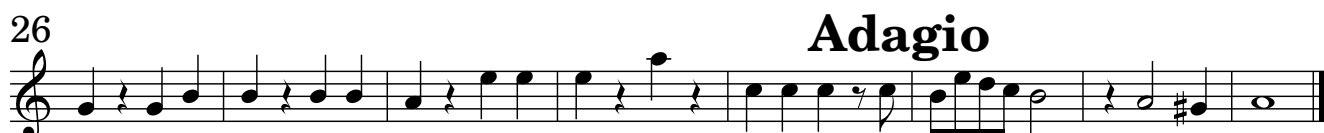
19



Detailed description: This staff shows measures 19-25 of the Presto section. It begins with a treble clef and a common time signature. The music consists of quarter notes with a dotted quarter note, followed by a quarter note, and then a half note. The key signature has one sharp (F#).

26

Adagio



Detailed description: This staff shows measures 26-32 of the Adagio section. It begins with a treble clef and a common time signature. The music consists of quarter notes with a dotted quarter note, followed by a quarter note, and then a half note. The key signature has one sharp (F#).

Allegro

6

12

18

24

31

37

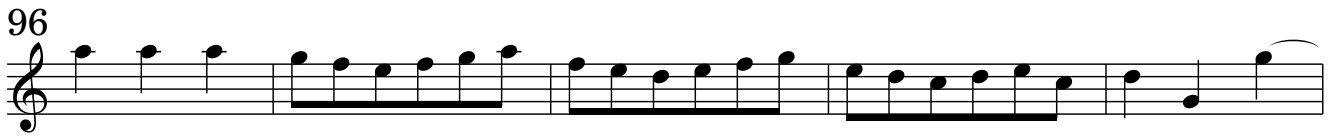
44

51

59

65

73



Concerto VI

Tomaso Albinoni
op. 5 No. 6

Violino 3 Allegro

5

9

13

16

20

24

29

34

39

43

p

f

f

p

f

p

f

47



50

p *f*

54

59

Detailed description: This block contains five staves of musical notation for Violino 3. The first staff (measures 47-49) features a melodic line with eighth and sixteenth notes. The second staff (measures 50-53) includes dynamic markings *p* and *f*. The third staff (measures 54-58) continues the melodic development. The fourth and fifth staves (measures 59-63) conclude the section with a final melodic phrase.

Adagio **Presto**



6

11

15

19

24

Adagio

29

Detailed description: This block contains eight staves of musical notation. The first staff (measures 6-10) is marked **Adagio**. The second staff (measures 11-14) is marked **Presto**. The third staff (measures 15-18) continues the **Presto** section. The fourth staff (measures 19-23) continues the **Presto** section. The fifth staff (measures 24-28) continues the **Presto** section. The sixth staff (measures 29-33) is marked **Adagio** and concludes the section.

Allegro

26

30

34

39

44

49

54

59

66

71

76

84

89



94



98



102



107



111



116



121



126



Concerto VI

Tomaso Albinoni
op. 5 No. 6

Viola alto

Allegro

5

9

13

16

20

24

29

34

39

43

f

p

f

p

f

p

f

47



50



54



59

**Adagio**

5

Presto

10



14



19



24



29

Adagio

Allegro

26



30



34



39



44



49



54



59



66



71



76



84



89



94



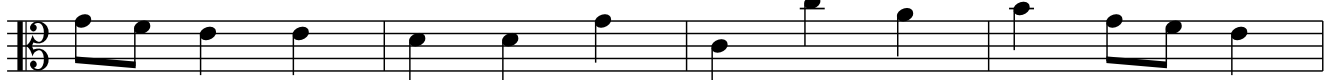
98



102



107



111



116



121



126



Concerto VI

Tomaso Albinoni
op. 5 No. 6

Viola tenore

Allegro

5

9

13

17

21

25

29

34

39

43

47



50



54



59

**Adagio****Presto**

6



10



15



19



24



29

Adagio

Allegro

19

23

28

33

38

43

48

53

58

65

70

75

3

3

82



87



92



97



102



107



112



117



122



126



Concerto VI

Tomaso Albinoni
op. 5 No. 6

Violotta/ Violino ottava

Allegro

5

9

13

17

21

25

29

33

37

41

p

f

p

f

p

f

45

49

53

58

60

p *f*

Adagio **Presto**

6

10

15

19

24

Adagio

Allegro

19

23

28

33

38

43

48

53

58

65

70

75

3

3

82

87

92

97

102

107

112

117

122

126

The image displays a musical score for the Violotta/Violino ottava part of T. Albinoni's Concerto VI in C. The score is presented in ten staves, each beginning with a measure number. The music is written in treble clef with a key signature of one sharp (F#). The notation includes various note values such as quarter, eighth, and sixteenth notes, as well as rests and accidentals. The piece concludes with a double bar line at measure 126.

Concerto VI

Tomaso Albinoni
op. 5 No. 6

Violoncello

Allegro

6

11

15

22

27

33

39

44

49

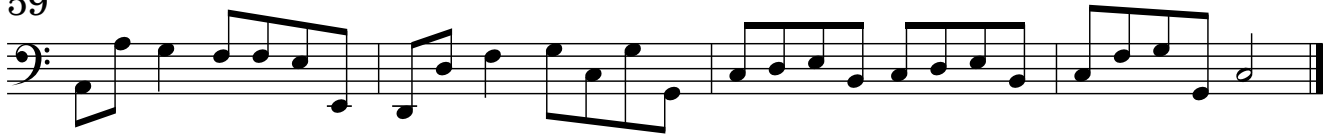
54

p *f*

3

2

59

**Adagio****Presto**

6



11



15



19



24



29

Adagio

Allegro

13



17



21



26



31



36



41



46



50



54



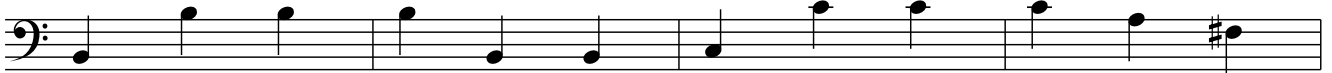
58



65



70



74



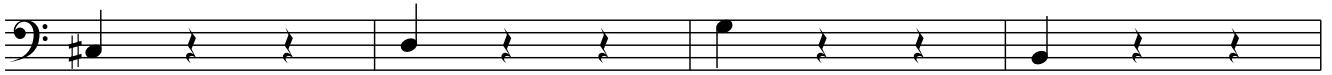
81



86



90



94



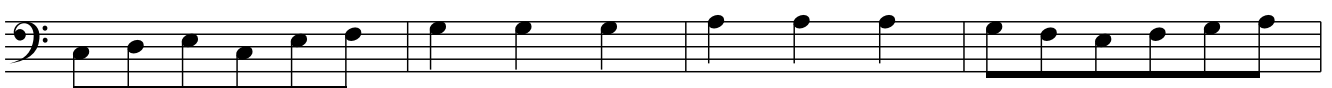
98



103



107



111



116



121



126

