

BEETHOVEN

TRIO OP. 1/3

Violon

"Le Concert"

bibliotheque@leconcert.fr

101 *sf sf sf ff sf*

110 **D** *p sf pp < sf p*

122 *pp tr 1 p*

131 *sf sf sf ff fp*

140 **E** *f 11 2 2*

162 *ff p p*

171 **F** *pp mf 6 Cello p*

185

192 *fp f p*

205 **G** *f p*

212 *p ff p 10*

230 **H** *p* *sf sf sf sf sf*

241 *f* *sf*

248 *sf sf f sf sf* **I** *tr*

257 *tr sf p p*

268 **K** *p mf*

277 *p espressivo*

287 *4 pp ff*

301 **L** *f sf sf sf sf ff*

312 **M** *sf p sf sf pp < sf*

324 *p > pp* **1** *Adagio* **4** *Tempo I sf ff*

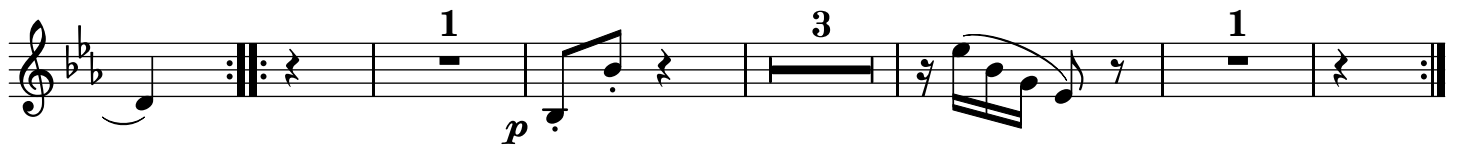
339 **N** *p pp pp*

350 *f p f sf sf sf ff*

Andante cantabile con Variazioni



Var.I



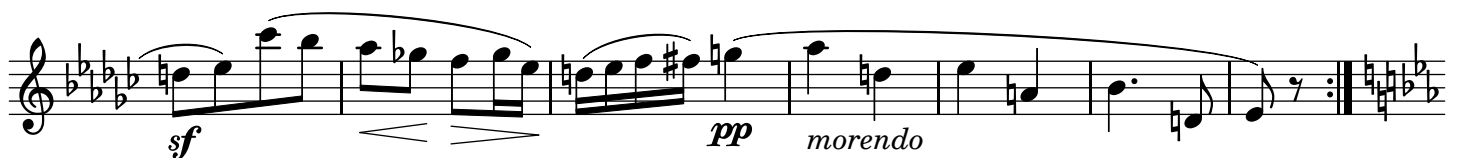
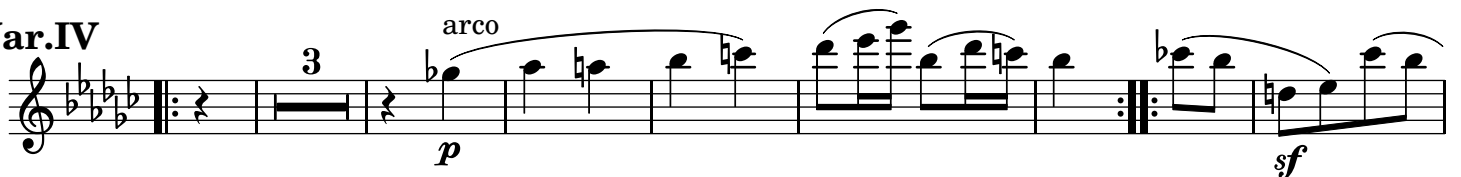
Var.II



Var.III



Var.IV



Var.V Un poco più Andante

Musical notation for the first section, 'Var.V Un poco più Andante'. It consists of two staves of music in a key signature of two flats (B-flat and E-flat). The first staff begins with a *p legato* dynamic and includes a first ending bracket with a '1.' and a second ending bracket with a '2.'. The second staff continues the melodic line with various dynamics and articulations.

Coda Tempo I

Musical notation for the 'Coda Tempo I' section, spanning two staves. The first staff starts with a *p* dynamic and features a triplet of eighth notes. The second staff includes a *sf* dynamic and a *pp* dynamic. The section concludes with a repeat sign and a fermata.

MENUETTO

Quasi Allegro

Musical notation for the 'MENUETTO Quasi Allegro' section, starting on a single staff. It is in 3/4 time and begins with a *p* dynamic. The melody is characterized by frequent rests and a *ff* dynamic towards the end of the first phrase.

Musical notation for measures 9 through 16 of the Minuet. The first staff of this block starts with a *p* dynamic and includes a first ending bracket. The second staff continues with a *p* dynamic and a fermata.

Musical notation for measures 17 through 24 of the Minuet. The first staff begins with a *sf* dynamic, and the second staff continues with *sf* and *f* dynamics.

Musical notation for measures 25 through 33 of the Minuet. The first staff includes a first ending bracket and a *pp* dynamic. The second staff continues with *sf* and *ff* dynamics.

Musical notation for measures 34 through 41 of the Minuet. The first staff starts with a *sf* dynamic and includes a *Fine* marking at the end. The second staff continues with *sf* and *p* dynamics.

TRIO

Musical notation for measures 42 through 51 of the Trio section. The first staff begins with a *p* dynamic and includes a first ending bracket. The second staff continues with a *p* dynamic.

Musical notation for measures 52 through 65 of the Trio section. The first staff starts with a *p* dynamic and includes a first ending bracket. The second staff continues with a *pp* dynamic.

Musical notation for measures 66 through 73 of the Trio section. The first staff begins with a *p* dynamic and includes a first ending bracket. The second staff continues with *sf* and *pp* dynamics, ending with the instruction 'Men. D.C.'.

FINALE
Prestissimo

ff *sf sf*

p

p **P** *pp*

sf

sf p ff

sf sf p **Q**

sf sf sf f sf **1**

sf sf p **1**

p dolce **R**

dolce

187 

195 

201 

208 

215 

225 

239 

246 

253 

261 

270 

279 

288 

298 *dolce*

307 **A**

316

324 **B**

337

345

354 **C**

365 **1**

375

384 **D**

392 **1**

402 **2**

413 **4**