

SINFONIA No. 1

I

Joseph Haydn

Presto

p *cresc.* *poco f* *ff*

6

11

16

20

p

24

f *p*

29

34

p *f*

39

p *f*

43

p *f*

47



50



55



60



65



70



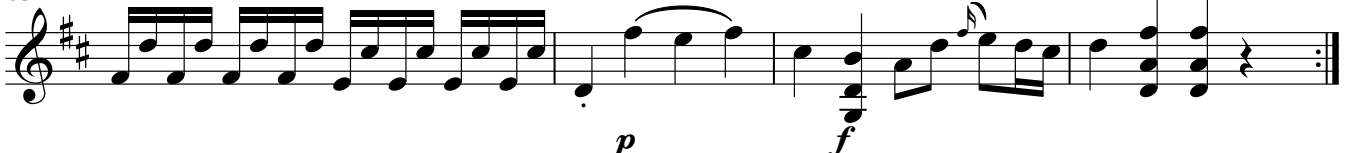
74



78

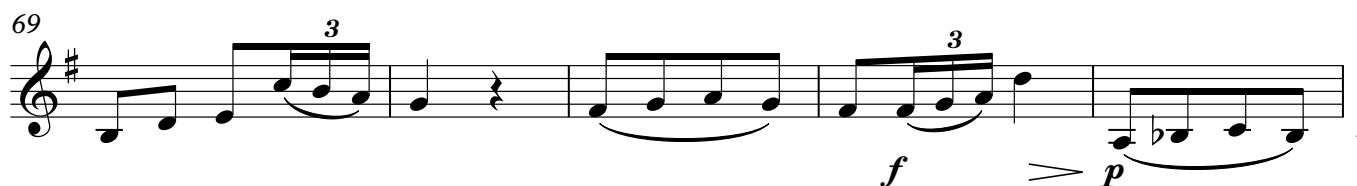
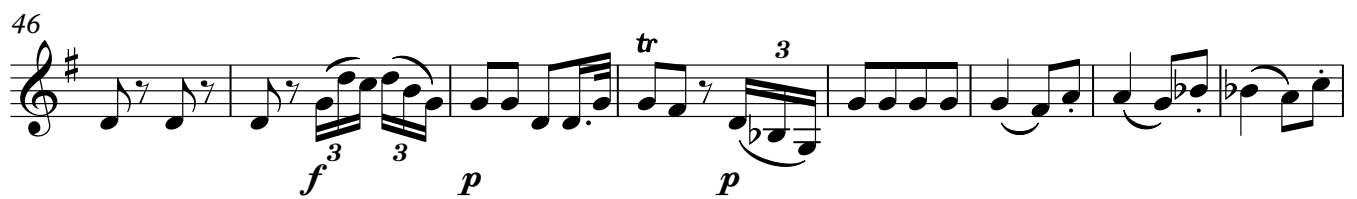
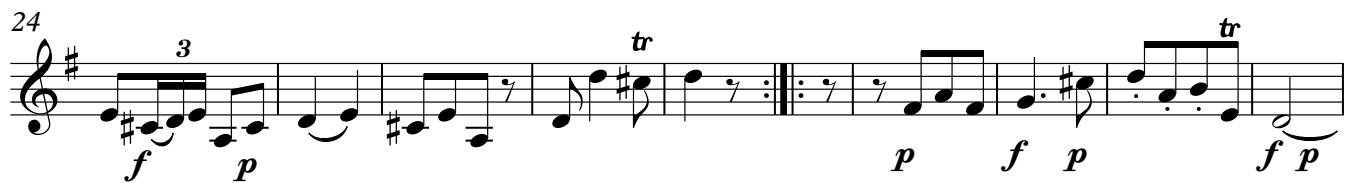


83



II

Andante



V.S.

74

f *p* *tr*

III

Presto

f

12

21

p *f* *p* *f*

30

39

p *tr*

48

f

60

69

p *f* *p*

76