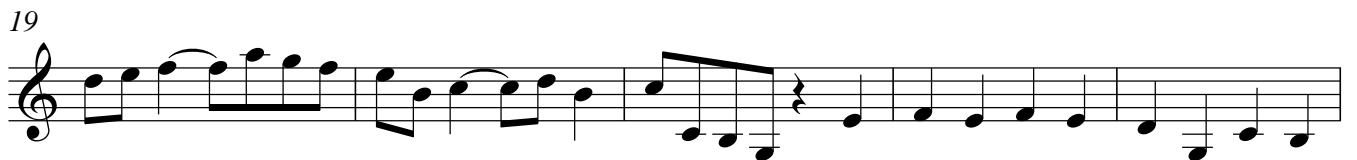
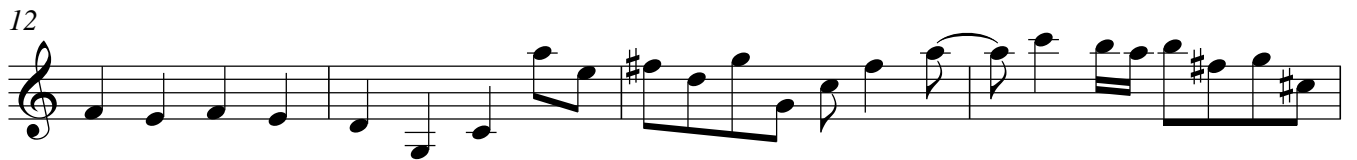
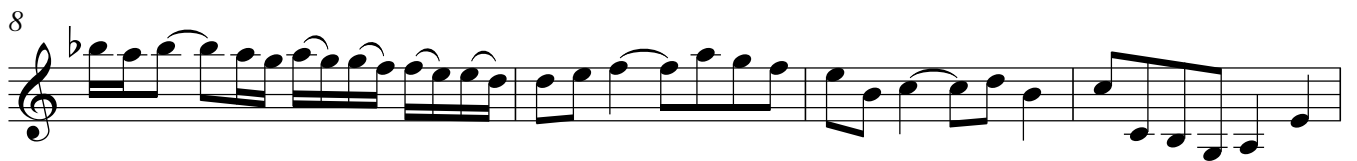
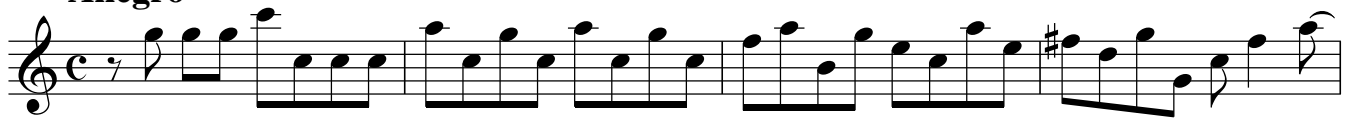


# Konzert C-Dur Nr. 2 für Oboe, Streicher und B.c.

Violine I

G. Valentini

**Allegro**





**Largo**

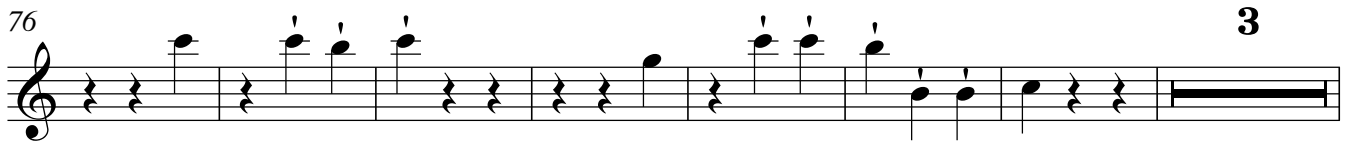
Musical score for the Largo section, measures 7 to 17. The music is in treble clef with a common time signature (C). Measure 7 starts with a fermata. Measure 10 contains a measure rest marked with a '4'. Measure 17 ends with a double bar line.

**Allegro spiccato**

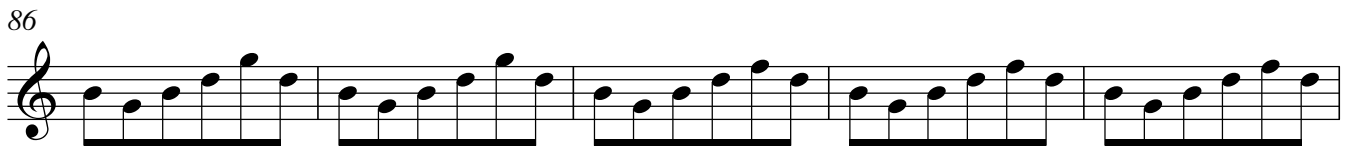
**10**

Musical score for the Allegro spiccato section, measures 10 to 69. The music is in treble clef with a 3/4 time signature. Measure 10 starts with a fermata. Measure 21 contains a measure rest marked with a '10'. Measure 69 ends with a double bar line and a '3' below it.

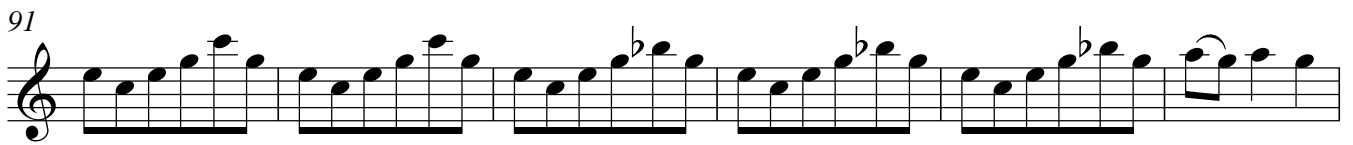
76 3



86



91



97 *p*



104 *f*



108

