

*mp* *sf* *p*

*m*

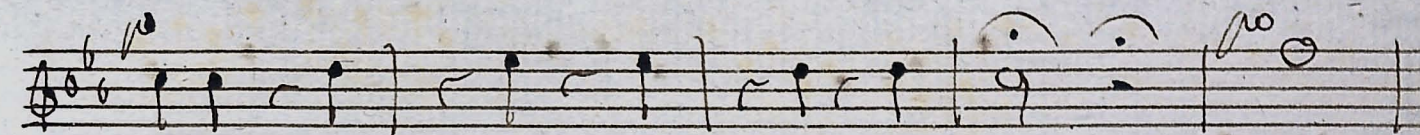
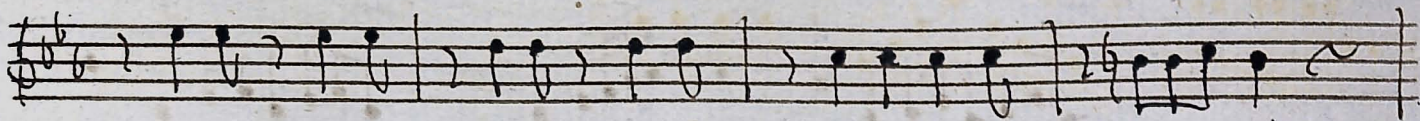
*A* *A*

*sf*

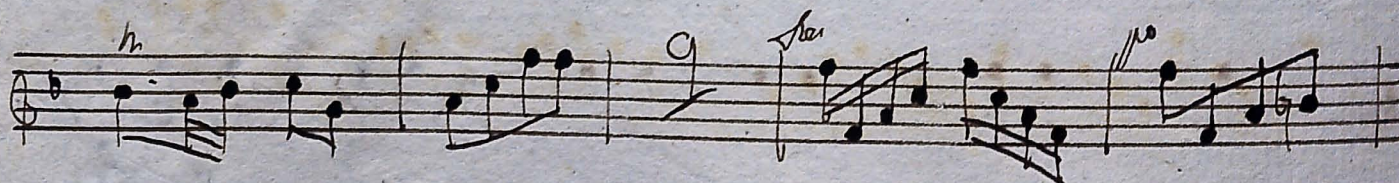
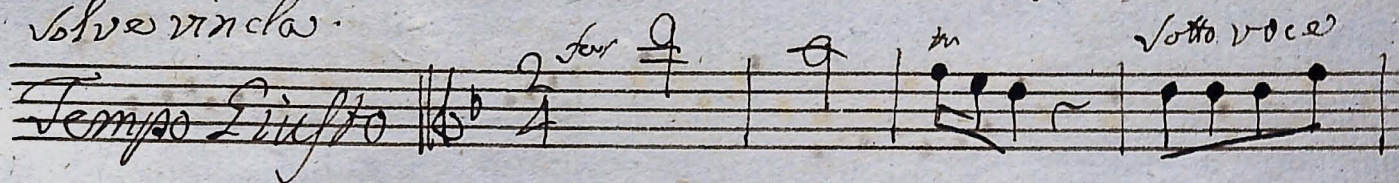
*sf*

*pm*

*Volto Presto*



solus vincas.



Handwritten musical notation on a single staff, featuring a treble clef, a key signature of one flat, and various notes with slurs and dynamic markings like 'fz' and 'p'.

Handwritten musical notation on a single staff, featuring a bass clef, a key signature of one flat, and notes with slurs.

Handwritten musical notation on a single staff, featuring a bass clef, a key signature of one flat, and notes with slurs and dynamic markings like 'fz'.

Handwritten musical notation on a single staff, featuring a treble clef, a key signature of one flat, and notes with slurs and dynamic markings like 'p'.

Handwritten musical notation on a single staff, featuring a treble clef, a key signature of one flat, and notes with slurs and dynamic markings like 'p'.

Handwritten musical notation on a single staff, featuring a treble clef, a key signature of one flat, and notes with slurs and dynamic markings like 'fz'.

Handwritten musical notation on a single staff, featuring a treble clef, a key signature of one flat, and notes with slurs and dynamic markings like 'fz'.

Handwritten musical notation on a single staff, featuring a treble clef, a key signature of one flat, and notes with slurs.

Handwritten musical notation on a single staff, featuring a bass clef, a key signature of one flat, and notes with slurs.

Handwritten musical notation on a single staff, featuring a treble clef, a key signature of one flat, and notes with slurs and dynamic markings like 'fz' and 'p'.

Volke

Handwritten musical notation on a single staff. It begins with a treble clef and a key signature of one flat (B-flat). The notation includes eighth and sixteenth notes, some beamed together. Dynamic markings include 'f' (forte) and 'p' (piano). There are also some handwritten annotations above the staff, possibly indicating fingerings or articulation.

Handwritten musical notation on a single staff. It continues with a treble clef and a key signature of one flat. The notation features eighth and sixteenth notes, with some rests. Dynamic markings like 'p' are present. There are some handwritten annotations above the staff, possibly indicating fingerings or articulation.

Handwritten musical notation on a single staff. It continues with a treble clef and a key signature of one flat. The notation features eighth and sixteenth notes, with some rests. Dynamic markings like 'p' and 'f' are present. There are some handwritten annotations above the staff, possibly indicating fingerings or articulation.

Handwritten musical notation on a single staff. It continues with a treble clef and a key signature of one flat. The notation features eighth and sixteenth notes, with some rests. Dynamic markings like 'p' and 'f' are present. There are some handwritten annotations above the staff, possibly indicating fingerings or articulation.

*Monstrata esse.*

Handwritten musical notation on a single staff. It begins with the tempo marking 'Allo mod.' (Allegro moderato). The notation starts with a double bar line and a treble clef, followed by a key signature of one flat. The notation includes eighth and sixteenth notes.

Handwritten musical notation on a single staff. It continues with a treble clef and a key signature of one flat. The notation features eighth and sixteenth notes, with some rests. Dynamic markings like 'p' and 'f' are present.

Handwritten musical notation on a single staff. It continues with a treble clef and a key signature of one flat. The notation features eighth and sixteenth notes, with some rests. Dynamic markings like 'p' and 'f' are present.

Handwritten musical notation on a single staff. It continues with a treble clef and a key signature of one flat. The notation features eighth and sixteenth notes, with some rests. Dynamic markings like 'p' and 'f' are present.

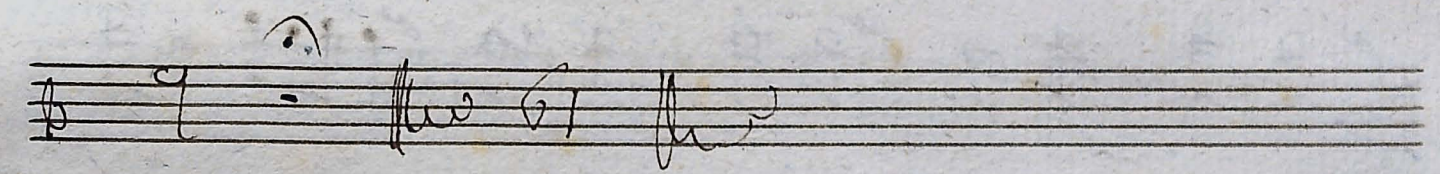
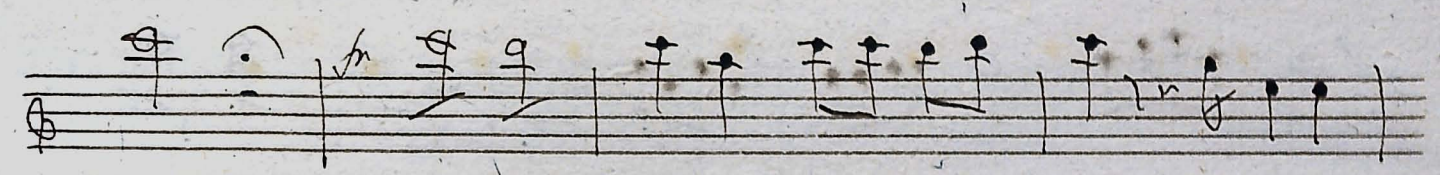
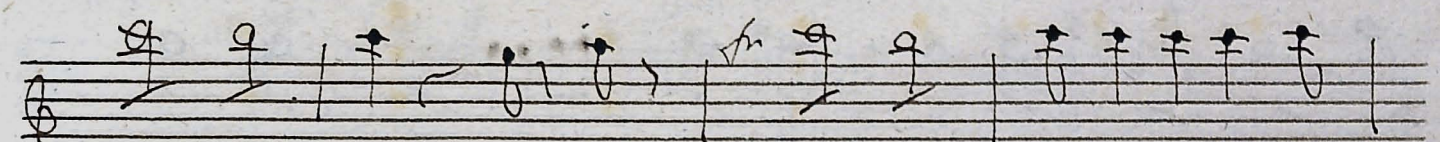
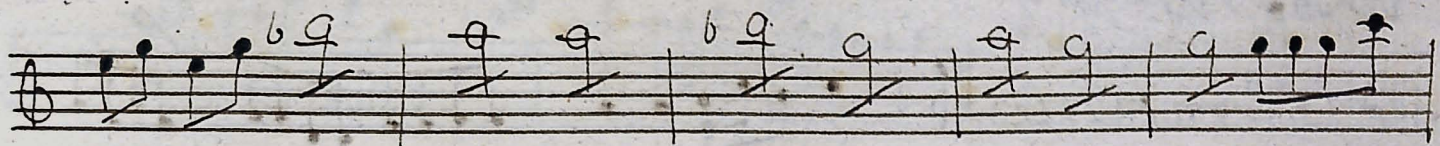
Handwritten musical notation on a single staff. It continues with a treble clef and a key signature of one flat. The notation features eighth and sixteenth notes, with some rests. Dynamic markings like 'p' and 'f' are present.

Handwritten musical notation on a single staff. It continues with a treble clef and a key signature of one flat. The notation features eighth and sixteenth notes, with some rests. Dynamic markings like 'p' and 'f' are present. The piece concludes with a double bar line and a final cadence.

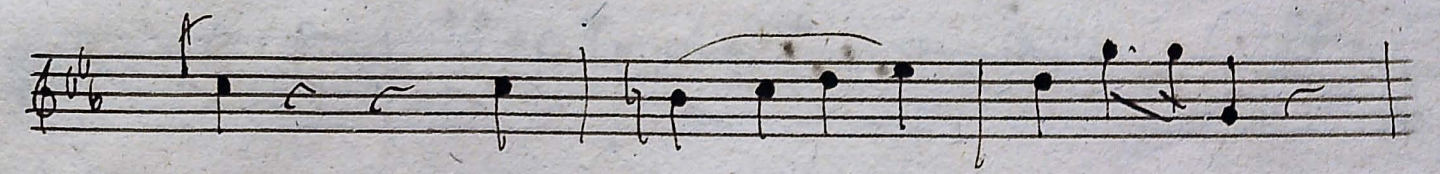
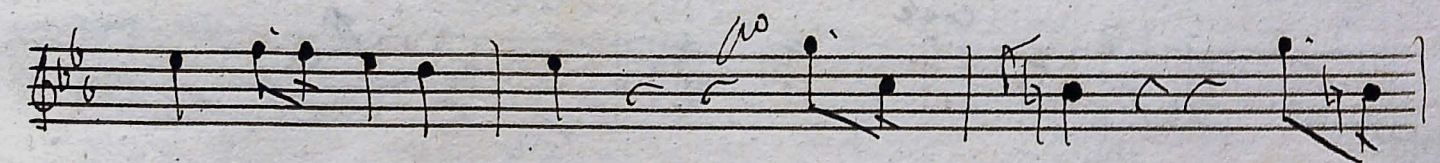
Virgo singulari

*Largo Cantabile*

Volke



*Vitae laus Deo.*





*Laud Deo.*

