

PANIS ANGELICUS

(From: Messe solennelle in A Major, Opus 12, - No.5)
for Two Tenor voices and Wind Ensemble

Horn in F 1

César Franck (1822 - 1890)
Arr. Michel Rondeau

Poco Lento e molto cantabile ♩ = 80

The musical score for Horn in F 1 consists of five staves of music. The key signature is A major (three sharps) and the time signature is common time (C). The tempo is marked "Poco Lento e molto cantabile" with a metronome marking of ♩ = 80. The dynamics range from *mp* (mezzo-piano) to *mf* (mezzo-forte). The score includes various articulations such as slurs, accents, and dynamic markings. The first staff begins with a *mp* dynamic. The second staff starts at measure 7. The third staff starts at measure 14 and includes an 8-measure rest. The fourth staff starts at measure 27 and includes 6-measure and 15-measure rests. The fifth staff starts at measure 53 and includes a 3-measure rest, ending with a *mf* dynamic.

PANIS ANGELICUS

(From: Messe solennelle in A Major, Opus 12, - No.5)
for Two Tenor voices and Wind Ensemble

Horn in F 2

César Franck (1822 - 1890)
Arr. Michel Rondeau

Poco Lento e molto cantabile ♩ = 80

The musical score for Horn in F 2 consists of five staves of music in G major (three sharps) and common time. The tempo is marked 'Poco Lento e molto cantabile' with a quarter note equal to 80 beats per minute. The dynamics range from mezzo-forte (mf) to piano (p). The score includes various articulations such as slurs, accents, and breath marks. Measure numbers 7, 14, 27, and 53 are indicated at the start of their respective staves. The score concludes with a double bar line and repeat dots.

PANIS ANGELICUS

(From: Messe solennelle in A Major, Opus 12, - No.5)
for Two Tenor voices and Wind Ensemble

Trumpet in B \flat 1

César Franck (1822 - 1890)
Arr. Michel Rondeau

Poco Lento e molto cantabile $\text{♩} = 80$

The musical score for Trumpet in B \flat 1 consists of nine staves of music. The key signature is A major (three sharps: F#, C#, G#) and the time signature is common time (C). The tempo and mood are 'Poco Lento e molto cantabile' with a quarter note equal to 80 beats per minute. The score begins with a mezzo-piano (*mp*) dynamic. Measures 1-5 are a melodic line starting on G4. Measures 6-10 continue the melodic line. Measure 11 has a fermata. Measures 12-13 are rests, with a '12' above the staff. Measure 14 has a fermata. Measures 15-16 are rests, with a '2' above the staff. Measure 17 has a fermata. Measures 18-28 are rests. Measure 29 has a fermata. Measures 30-34 are rests. Measure 35 has a fermata. Measures 36-39 are marked 'Mute' and consist of a rhythmic pattern of eighth notes. Measures 40-44 continue the muted rhythmic pattern. Measures 45-49 continue the muted rhythmic pattern. Measure 50 has a fermata. Measures 51-56 are rests. Measure 57 has a fermata. The score ends with a mezzo-forte (*mf*) dynamic.

PANIS ANGELICUS

(From: Messe solennelle in A Major, Opus 12, - No.5)
for Two Tenor voices and Wind Ensemble

Trumpet in B \flat 2

César Franck (1822 - 1890)
Arr. Michel Rondeau

Poco Lento e molto cantabile $\text{♩} = 80$

The musical score for Trumpet in B \flat 2 consists of eight staves of music. The key signature is A major (three sharps) and the time signature is common time (C). The tempo is marked "Poco Lento e molto cantabile" with a quarter note equal to 80 beats per minute. The score begins with a mezzo-piano (*mp*) dynamic. Measures 1-5 show a melodic line with slurs. Measure 6 starts a new phrase. Measures 11-12 feature a 12-measure rest. Measures 13-14 have a 2-measure rest. Measures 29-34 continue the melodic line. Measures 35-39 are marked "Mute" and feature a rhythmic pattern of eighth notes. Measures 40-44 continue this pattern. Measures 45-49 continue the pattern. Measures 50-54 are marked "Open" and feature a rhythmic pattern. Measure 55 has a 3-measure rest. Measures 57-64 conclude the piece with a mezzo-forte (*mf*) dynamic and a final sustained note.

PANIS ANGELICUS

(From: Messe solennelle in A Major, Opus 12, - No.5)
for Two Tenor voices and Wind Ensemble

Trumpet in Bb 3

César Franck (1822 - 1890)
Arr. Michel Rondeau

Poco Lento e molto cantabile ♩ = 80

The musical score for Trumpet in Bb 3 consists of eight staves of music. The key signature is A major (three sharps) and the time signature is common time (C). The tempo is marked 'Poco Lento e molto cantabile' with a quarter note equal to 80 beats per minute. The score begins with a mezzo-piano (*mp*) dynamic. Measures 1-5 show a melodic line with slurs. Measure 6 starts a new phrase. Measure 11 features a half note with an accent and a fermata. Measure 12 is a whole rest. Measure 27 has a second ending bracket. Measure 34 is marked 'Mute' and features a series of eighth notes. Measure 39 continues the eighth-note pattern. Measure 44 continues the eighth-note pattern. Measure 49 is marked 'Open' and features a series of eighth notes. Measure 54 has a triplet of eighth notes followed by a mezzo-forte (*mf*) dynamic.

PANIS ANGELICUS

(From: Messe solennelle in A Major, Opus 12, - No.5)
for Two Tenor voices and Wind Ensemble

Trombone 1

Poco Lento e molto cantabile ♩ = 80

César Franck (1822 - 1890)

Arr. Michel Rondeau

The musical score for Trombone 1 consists of five staves of music. The key signature is two sharps (F# and C#) and the time signature is common time (C). The tempo is marked "Poco Lento e molto cantabile" with a metronome marking of ♩ = 80. The dynamics are marked as *mp* (mezzo-piano), *pp* (pianissimo), and *mf* (mezzo-forte). The score includes rehearsal marks at measures 7, 21, 35, and 57. The music features a mix of eighth and sixteenth notes, often beamed together, and includes some rests and slurs.

PANIS ANGELICUS

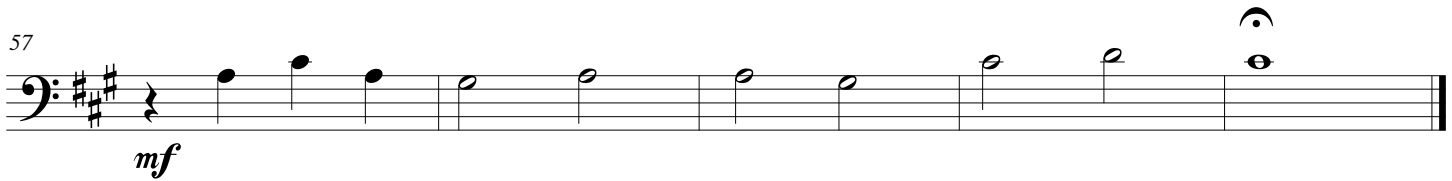
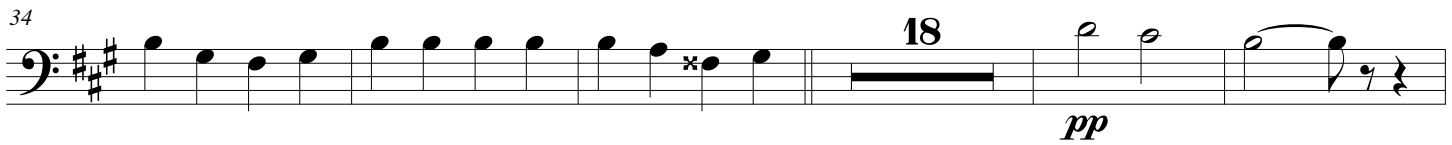
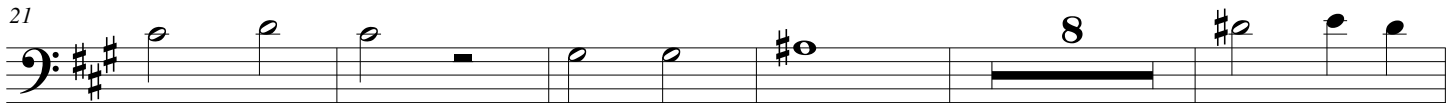
(From: Messe solennelle in A Major, Opus 12, - No.5)
for Two Tenor voices and Wind Ensemble

Trombone 2

César Franck (1822 - 1890)

Arr. Michel Rondeau

Poco Lento e molto cantabile $\text{♩} = 80$



PANIS ANGELICUS

(From: Messe solennelle in A Major, Opus 12, - No.5)
for Two Tenor voices and Wind Ensemble

Bass Trombone

César Franck (1822 - 1890)
Arr. Michel Rondeau

Poco Lento e molto cantabile ♩ = 80

Musical notation for Bass Trombone, measures 1-7. The key signature is two sharps (F# and C#), and the time signature is common time (C). The music starts with a mezzo-piano (*mp*) dynamic. It features a melodic line with a half note G3, a quarter note A3, a half note B3, a quarter note C4, a half note D4, a quarter note E4, a half note F#4, a quarter note G4, a half note A4, a quarter note B4, a half note C5, and a quarter note D5. There are rests in measures 6 and 7.

mp

Musical notation for Bass Trombone, measures 8-15. Measure 8 starts with a quarter rest, followed by quarter notes G3, A3, B3, C4, D4, E4, F#4, G4, A4, B4, C5, and D5. Measure 9 has a half note G4 with a fermata. Measure 10 has a quarter note G4 with a fermata. Measures 11-15 contain an 8-measure rest.

Musical notation for Bass Trombone, measures 22-33. Measure 22 has a quarter note G3, a quarter rest, a quarter note G3, a quarter note A3, a quarter note B3, a quarter note C4, a quarter note D4, a quarter note E4, a quarter note F#4, a quarter note G4, a quarter note A4, a quarter note B4, a quarter note C5, and a quarter note D5. Measure 23 has a quarter note G4 with a fermata. Measure 24 has a quarter note G4 with a fermata. Measures 25-33 contain a 6-measure rest.

Musical notation for Bass Trombone, measures 34-56. Measure 34 has a quarter note G3, a quarter note A3, a quarter note B3, a quarter note C4, a quarter note D4, a quarter note E4, a quarter note F#4, a quarter note G4, a quarter note A4, a quarter note B4, a quarter note C5, and a quarter note D5. Measure 35 has a quarter note G4 with a fermata. Measure 36 has a quarter note G4 with a fermata. Measure 37 has a quarter note G4 with a fermata. Measures 38-56 contain an 18-measure rest.

pp

Musical notation for Bass Trombone, measures 57-64. Measure 57 has a quarter note G3, a quarter note A3, a quarter note B3, a quarter note C4, a quarter note D4, a quarter note E4, a quarter note F#4, a quarter note G4, a quarter note A4, a quarter note B4, a quarter note C5, and a quarter note D5. Measure 58 has a quarter note G4 with a fermata. Measure 59 has a quarter note G4 with a fermata. Measure 60 has a quarter note G4 with a fermata. Measure 61 has a quarter note G4 with a fermata. Measure 62 has a quarter note G4 with a fermata. Measure 63 has a quarter note G4 with a fermata. Measure 64 has a quarter note G4 with a fermata.

mf

PANIS ANGELICUS

(From: Messe solennelle in A Major, Opus 12, - No.5)
for Two Tenor voices and Wind Ensemble

Euphonium

César Franck (1822 - 1890)

Arr. Michel Rondeau

Poco Lento e molto cantabile $\text{♩} = 80$

mp

7

8

21

7

34

18

pp

57

mf

PANIS ANGELICUS

(From: Messe solennelle in A Major, Opus 12, - No.5)
for Two Tenor voices and Wind Ensemble

Tuba

César Franck (1822 - 1890)
Arr. Michel Rondeau

Poco Lento e molto cantabile ♩ = 80

The musical score for the Tuba part is written on a single bass clef staff in A major (two sharps) and common time (C). The tempo is marked 'Poco Lento e molto cantabile' with a quarter note equal to 80 beats per minute. The score consists of five lines of music, each starting with a measure number: 1, 7, 21, 35, and 58. The first line begins with a mezzo-piano (*mp*) dynamic. The second line includes an 8-measure rest. The third line includes an 8-measure rest. The fourth line includes an 18-measure rest and features dynamic markings of *pp* (pianissimo) and *mf* (mezzo-forte). The fifth line concludes the piece with a final double bar line.

PANIS ANGELICUS

(From: Messe solennelle in A Major, Opus 12, - No.5)
for Two Tenor voices and Wind Ensemble

Double Bass

César Franck (1822 - 1890)
Arr. Michel Rondeau

Poco Lento e molto cantabile ♩ = 80

mp

7

8

21

8

35

18

pp

mf

58

PANIS ANGELICUS

(From: Messe solennelle in A Major, Opus 12, - No.5)
for Two Tenor voices and Wind Ensemble

Timpani A-E

César Franck (1822 - 1890)
Arr. Michel Rondeau

Poco Lento e molto cantabile ♩ = 80

3 *tr* *tr* *tr*
pp

9 2 *tr* 7 *tr* G#-C# 7

28 *tr tr* 3 B-E-A *tr* *tr*

36 7 *tr* A-E 11 *mf*

58 *tr* *tr*

PANIS ANGELICUS

(From: Messe solennelle in A Major, Opus 12, - No.5)
for Two Tenor voices and Wind Ensemble

Xylophone

César Franck (1822 - 1890)

Arr. Michel Rondeau

Poco Lento e molto cantabile $\text{♩} = 80$

Unison

mp

mf