

Mon mari ma deffamee

fol. 15^v - 16^r

Marbrianus de Orto (c.1460-1529)

[Cantus] (part 1 of 4)

Canti B numero cinquanta (Venice, 1501/2)

The image shows a musical score for the cantus part of 'Mon mari ma deffamee'. It consists of five staves of music in a single system, written in a treble clef with a key signature of one flat (B-flat). The time signature is common time (C). The lyrics 'Mon mari ma deffamee' are written below the first staff. The score includes various musical notations such as notes, rests, and accidentals. Measure numbers 5, 10, and 15 are indicated above the staves. There are also some small 'b' symbols above notes in the third and fourth staves, likely indicating a flat. The piece concludes with a double bar line at the end of the fifth staff.

Mon mari ma deffamee

fol. 15^v - 16^r

Marbrianus de Orto (c.1460-1529)

Altus (part 2 of 4)

Canti B numero cinquanta (Venice, 1501/2)

Mon mari ma deffamee

5

10

15

Mon mari ma deffamee

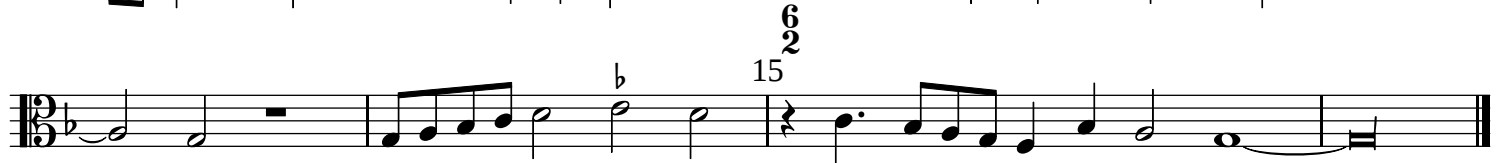
fol. 15^v - 16^r

Marbrianus de Orto (c.1460-1529)

Altus (part 2 of 4)

Canti B numero cinquanta (Venice, 1501/2)

Mon mari ma deffamee



Mon mari ma deffamee

fol. 15^v - 16^r

Marbrianus de Orto (c.1460-1529)

Tenor (part 3 of 4)

Canti B numero cinquanta (Venice, 1501/2)

1

5

10

15

b

Mon mari ma deffamee

fol. 15^v - 16^r

Marbrianus de Orto (c.1460-1529)

Tenor (part 3 of 4)

Canti B numero cinquanta (Venice, 1501/2)

1

5

10

15

6

2

b

Mon mari ma deffamee

fol. 15^v - 16^r

Anonymous

Bassus (part 4 of 4)

Canti B numero cinquanta (Venice, 1501/2)

5

10

15 $\frac{6}{2}$