

Trombone 2

REQUIEM

In memoriam Henri Dutilleux (1916-2013)

LOUIS SAUTER

I. Introitus

Adagio ♩ = 72

TACET



II. Kyrie

1 a 2 Adagio ♩ = 72

mp mf

6

10 rall.

The Kyrie section begins with a musical staff in bass clef, key signature of one sharp (F#), and a time signature of 3/4. The tempo is marked "Adagio" with a quarter note equal to 72 beats per minute. The first measure is marked with a first ending bracket "1" and a second ending bracket "a 2". The dynamics are marked "mp" (mezzo-piano) and "mf" (mezzo-forte). The section concludes with a "rall." (ritardando) marking. The notation includes various note values, rests, and phrasing slurs.

III. Dies iræ

1 **Allegro** ♩ = 120

ppp *cresc. poco a poco*

8

cresc. molto **fff**

13 **Andante** ♩ = 96

rit. . . . **A tempo**

10

mp

33

mf **mf** **mf**

40

fff

48 **poco rall.**

G.P.

Tempo primo ♩ = 120

fff **ppp**

56

molto rit.

ppp *niente* **pp**

IV. Tuba mirum

1 **Adagio** ♩ = 72

a 2

molto rit. . . .

mf

5 **A tempo**

3

rit.

V. Mors stupebit

1 **Adagio** ♩ = 72
27

p *p*

32 *mf*

36 **13** *rit.* **2**

VI. Rex tremendæ

1 **Adagio** ♩ = 72

f

7 *mf*

11 **8** *p*

VII. Recordare

1 **Adagio** ♩ = 72

TACET

VIII. Lacrimosa

1 **Adagio** ♩ = 72

TACET

Trombone 2

Trombone 2

IX. Domine Jesu

1 **Andante** ♩ = 96
12 7 3

25 *mf*

32 *f*

X. Hostias

1 **Adagio** ♩ = 64
6 4

15 *mf*

27 **Sanctus** 4 **Andante** ♩ = 96 *f*

XI. Benedictus

1 **Andante** ♩ = 96
46

52 *mp* rit. 2

XII. Agnus Dei

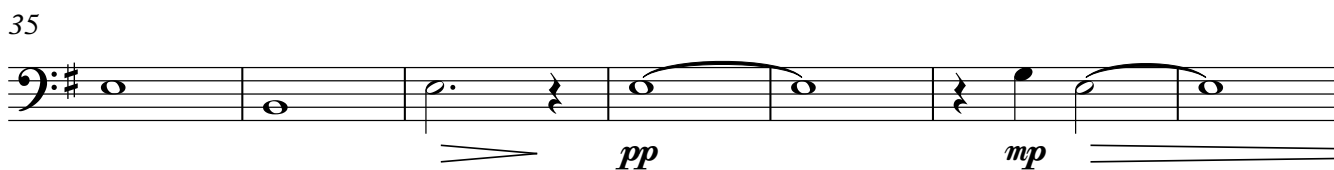
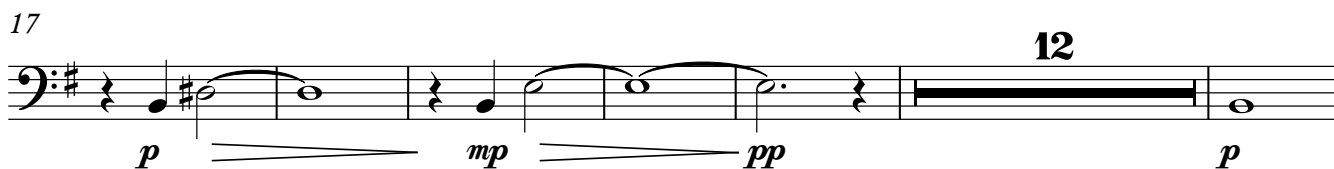
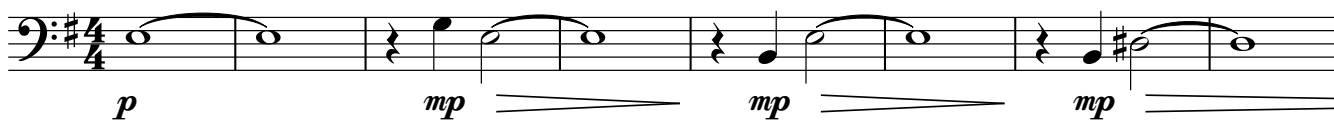
1 Allegretto ♩ = 88

TACET



XIII. Lux æterna

1 Un poco andante ♩ = 72



48 piu lento ♩ = 76

rit.

