

CHORALE PRELUDE

(*Ach Gott, erhör mein Seufzen*)

Score (01':01")

for Trumpet & Organ

Tobias Volckmar (1678 - 1756)

Arr. Michel Rondeau

Andante ♩ = 75

Trumpet in C

Organ

This system contains the first four measures of the score. The Trumpet in C part is in the upper staff, starting with a whole rest in the first measure, followed by a quarter rest, and then playing a series of quarter notes: G4, A4, B4, C5, B4, A4, G4. The Organ part is in two staves (treble and bass clef). The right hand plays a rhythmic pattern of eighth and sixteenth notes, while the left hand plays a bass line with quarter and eighth notes.

C Tpt.

Org.

This system contains measures 5 through 8. The C Trumpet part starts with a whole rest in measure 5, followed by a quarter rest, and then plays quarter notes: G4, A4, B4, C5, B4, A4, G4. The Organ part continues with its rhythmic accompaniment, featuring a mix of eighth and sixteenth notes in both hands.

C Tpt.

Org.

This system contains measures 9 through 12. The C Trumpet part has a whole rest in measure 9, followed by a quarter rest, and then plays quarter notes: G4, A4, B4, C5. The Organ part continues with its accompaniment, including a long note in the left hand in measure 9.

CHORALE PRELUDE - Volckmar - Score

C Tpt.

13

Org.

Detailed description: This system contains measures 13 through 16. The C Tpt. part (top staff) begins with a rest in measure 13, followed by a melodic line in measure 14. Measures 15 and 16 feature a sustained note with a tremolo effect. The Organ part (bottom staves) consists of two staves. The right hand plays a steady eighth-note accompaniment, while the left hand provides a bass line with some chromatic movement.

C Tpt.

17

Org.

Detailed description: This system contains measures 17 through 20. The C Tpt. part (top staff) has a melodic line in measure 17, followed by a long, sustained note in measure 18 that continues through measure 20. The Organ part (bottom staves) continues with its accompaniment. The right hand features some chordal textures and a sustained note in measure 19, while the left hand maintains a consistent bass line.

CHORALE PRELUDE

(Ach Gott, erhör mein Seufzen)

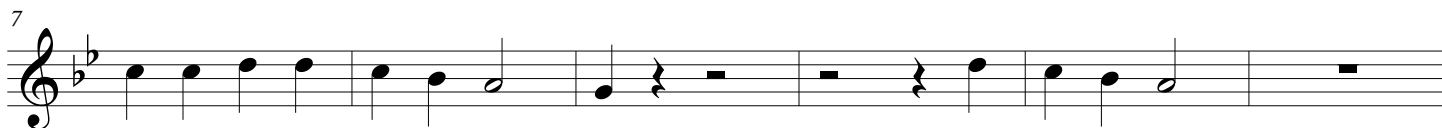
for Trumpet & Organ

Trumpet in C

Tobias Volckmar (1678 - 1756)

Arr. Michel Rondeau

Andante ♩ = 75



CHORALE PRELUDE

(Ach Gott, erhör mein Seufzen)

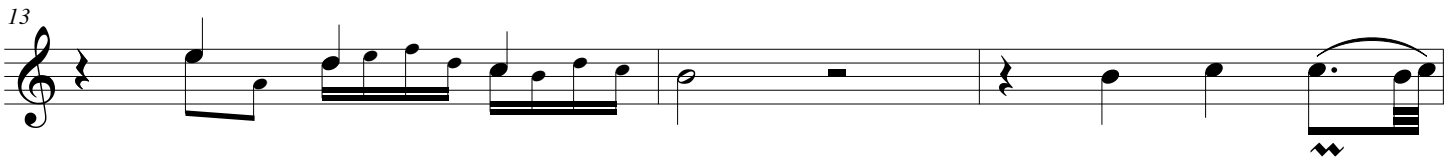
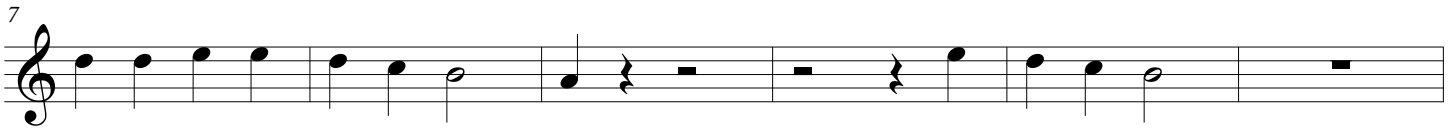
for Trumpet & Organ

Trumpet in Bb

Tobias Volckmar (1678 - 1756)

Arr. Michel Rondeau

Andante ♩ = 75



CHORALE PRELUDE

(*Ach Gott, erhör mein Seufzen*)

for Trumpet & Organ

Tobias Volckmar (1678 - 1756)

Arr. Michel Rondeau

Organ

Trumpet in C

Andante ♩ = 75

C Tpt.

Org.

C Tpt.

Org.

CHORALE PRELUDE - Volckmar - Organ

C Tpt.

Org.

C Tpt.

Org.