

Violoncello

Was Gott tut, das ist wohlgetan

BWV100

Johann Sebastian Bach
(1685-1750)

Versus I (Coro)

Vivace

4

7

11

14

17

21

24

28

31

34

37



40



43



46



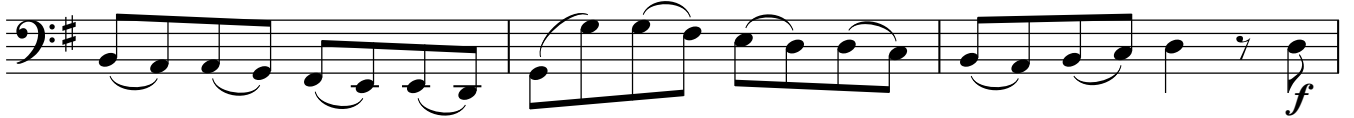
49



52



56



59



63



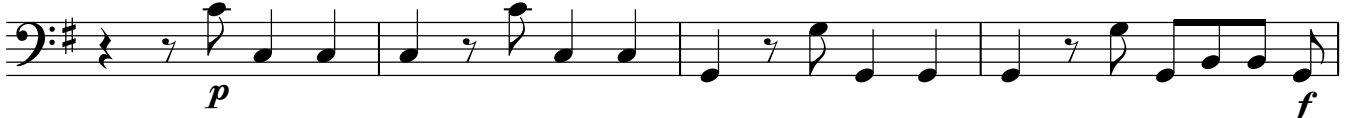
66



69



73



30



33



36



39



42



45



48



51



54



57



60



Versus III (Aria)

0 

4

7

10 **Fine**

13

16

19

22

25

28

31

34



37



40



43



46



49



52



56



59



62



65



68

D.S. al Fine 

Versus IV (Aria)

0 C

6 *f*

12 *Fine*

17 *p*

22

28

34

40

46

51 *f*

57 *p*

63

10 Versus V (Aria)

Violoncello

0 Un poc' Allegro

0 *f*

3

6

9 *f*

12

15 *p*

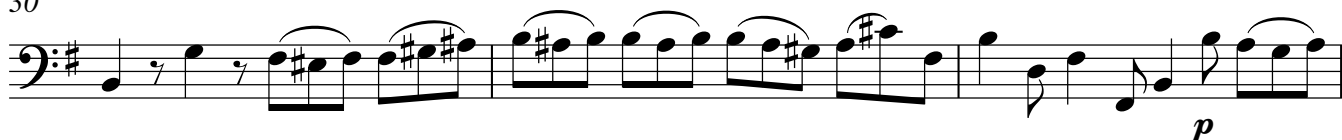
18

21

24

27 *f*

30



33



36



39



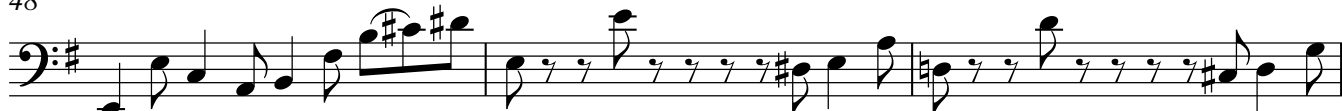
42



45



48



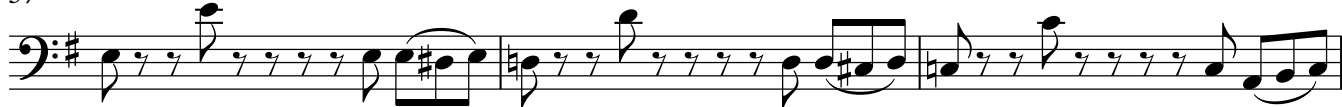
51



54



57



60



1 Versus VI (Choral)

1
Bass clef, key signature of one sharp (F#), common time (C). Measures 1-3 contain rests, followed by a series of eighth notes.

4
Measures 4-6: eighth notes, including a triplet of eighth notes in measure 5.

7
Measures 7-9: eighth notes, including a triplet of eighth notes in measure 8.

10
Measures 10-12: eighth notes, including a triplet of eighth notes in measure 11.

14
Measures 14-16: eighth notes, including a triplet of eighth notes in measure 15.

17
Measures 17-19: eighth notes, including a triplet of eighth notes in measure 18.

20
Measures 20-22: eighth notes, including a triplet of eighth notes in measure 21.

24
Measures 24-26: eighth notes, including a triplet of eighth notes in measure 25.

27
Measures 27-29: eighth notes, including a triplet of eighth notes in measure 28.

30
Measures 30-32: eighth notes, including a triplet of eighth notes in measure 31.

33
Measures 33-35: eighth notes, including a triplet of eighth notes in measure 34.

37
Measures 37-39: eighth notes, including a triplet of eighth notes in measure 38.