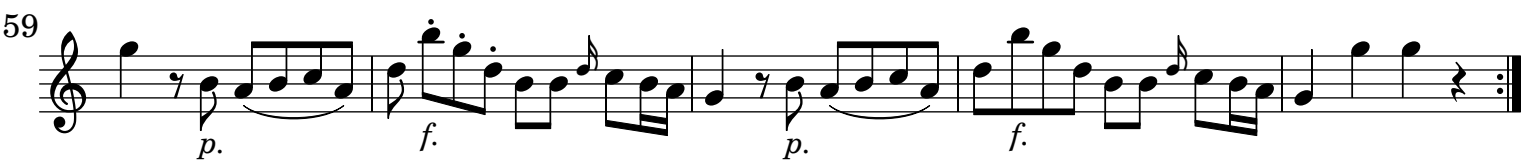
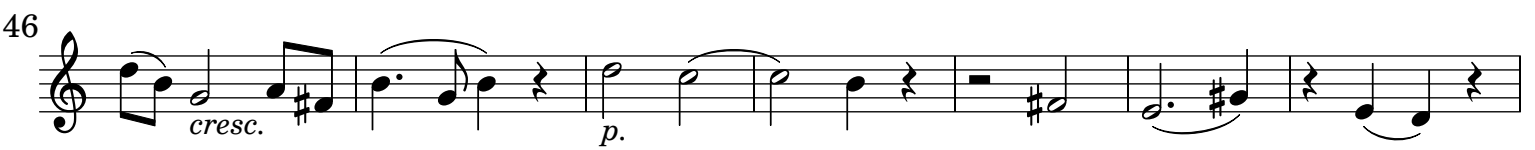
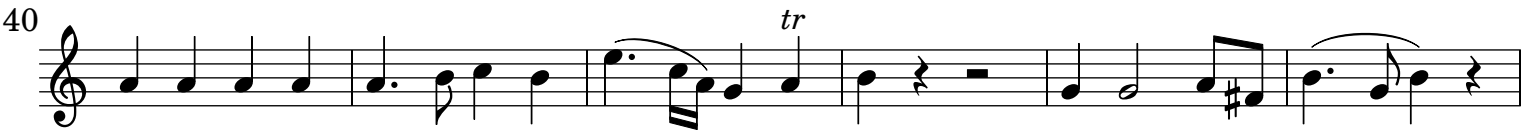
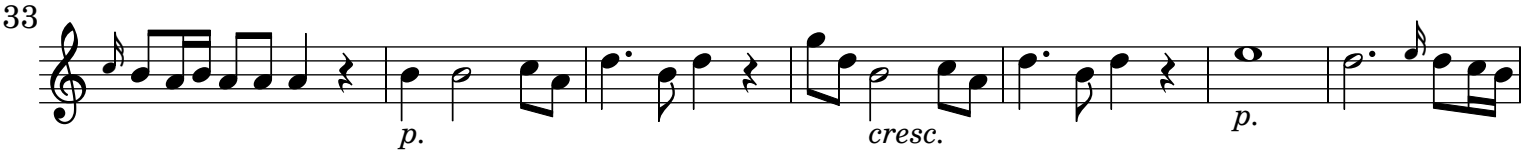
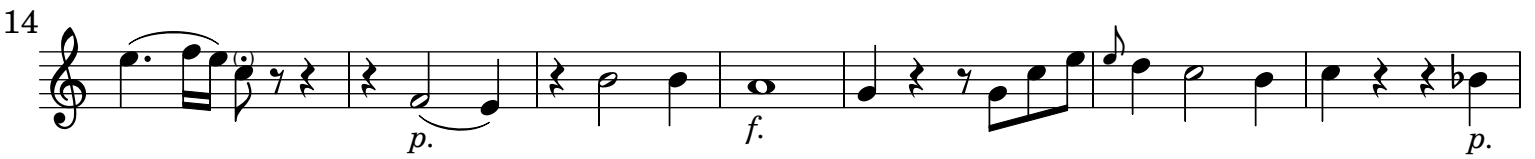
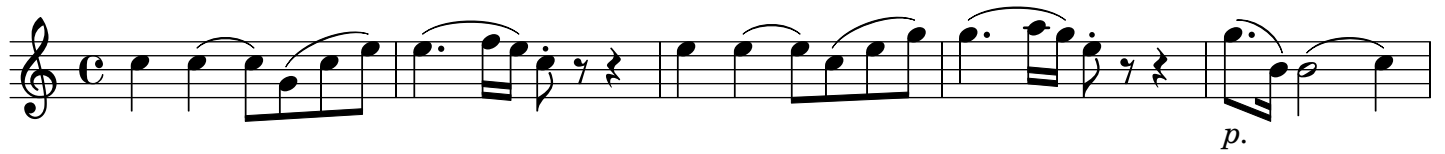


# Quartetto Op. 18

## Flauto traverso I

J. C. Bach (1735-1782)

[1.] Allegro



74 *p.* *tr*

78 *tr*

85 *tr*

90 *f.* *tr*

98 *tr* *mf.*

103 *p.* *f.*

111 *cresc.* *p.*

118 *tr*

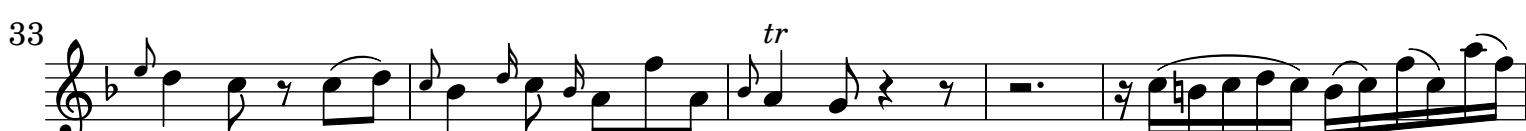
124 *cresc.*

131 *f.* *tr*

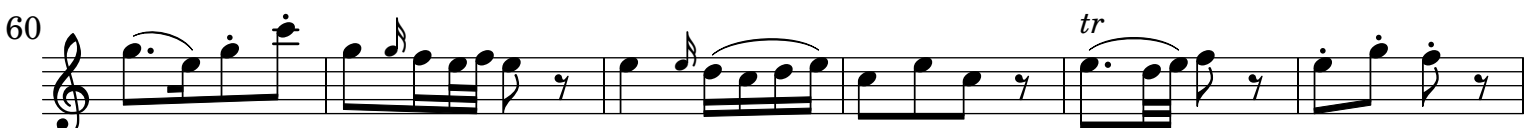
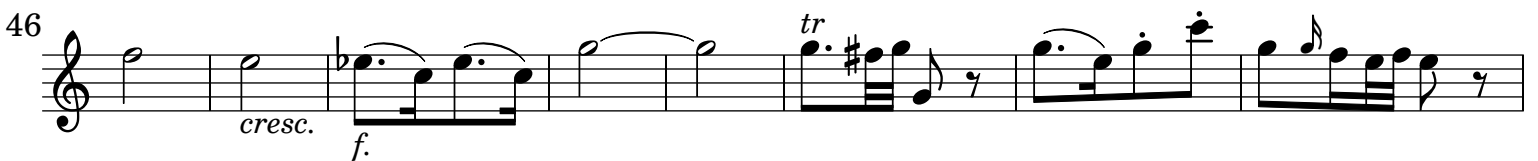
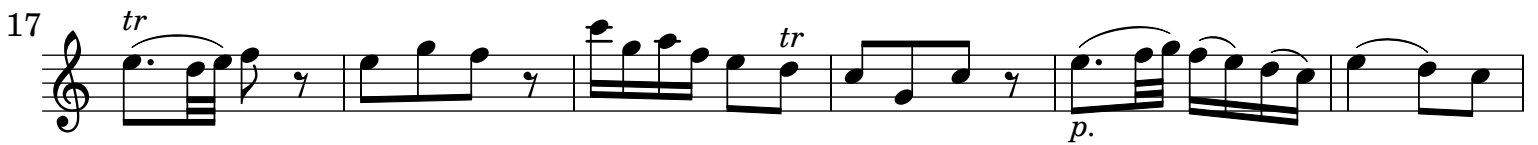
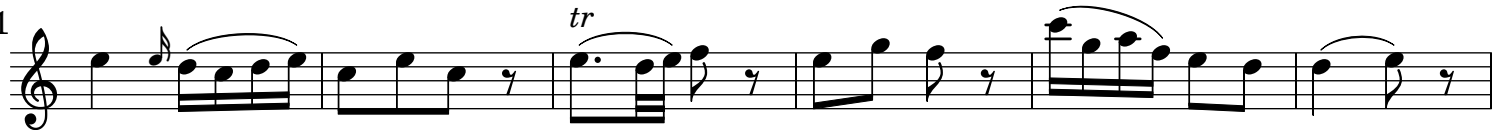
137 *p.* *f.* *p.* *f.*

Detailed description: This image shows a page of a musical score for the first flute part of J.C. Bach's Quartetto Op. 1. The score is written in treble clef with a key signature of one sharp (F#). It consists of ten staves of music, each starting with a measure number. The notation includes various dynamics such as piano (p.), forte (f.), mezzo-forte (mf.), and crescendo (cresc.), as well as trills (tr) and triplets (3). The music features a mix of melodic lines and rhythmic patterns, including sixteenth-note runs and eighth-note figures. The piece concludes with a double bar line at measure 140.

## [2.] Andantino



## [3.] Allegro



66 *tr*

72 *p.* 3

83 *f.* *p.*

89 *f.* *p.*

94 *f.* *p.*

100 *tr* 3

109 *p.* 3 *f.*

118 *p.*

123 *tr*

128 *f.*

133 *tr* *p.*

138 *f.* *tr*

Detailed description: This image shows a page of a musical score for the first flute part of J.C. Bach's Quartetto Op. 1. The score is written in treble clef with a key signature of two flats (B-flat and E-flat). The time signature is not explicitly shown but is 3/4. The page contains 11 staves of music, numbered 66, 72, 83, 89, 94, 100, 109, 118, 123, 128, and 133. The music features various dynamics including *f.* (forte) and *p.* (piano), and includes trills (*tr*) and triplets (indicated by the number 3). The notation includes eighth and sixteenth notes, rests, and slurs.