

# SUITE D'ORCHESTRE

DANS LE STYLE ANCIEN

Violoncelle

Albéric MAGNARD

(1865-1914)

## I - Française

Allegro giocoso (♩ = 84)

3  
con vigore

7 16 **A**  
mf mf mf mf

32 **B**  
f cresc. - - - - - molto

40 **C**  
molto - - - - - ff dim. e rit. - - -

49 **D** a tempo **E**  
9 2 3 4 5 6 7 8  
pp p p

70 **F**  
3  
meno p

78 **G** pizz. 2 arco pizz. 2 **H** arco  
mf ff cresc. - - - - -

90

97

105

### II - Sarabande

Mesto (♩ = 60)

Solo

a tempo

1

9

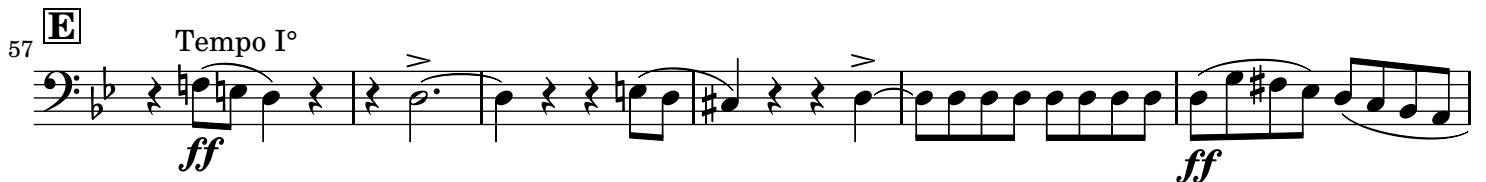
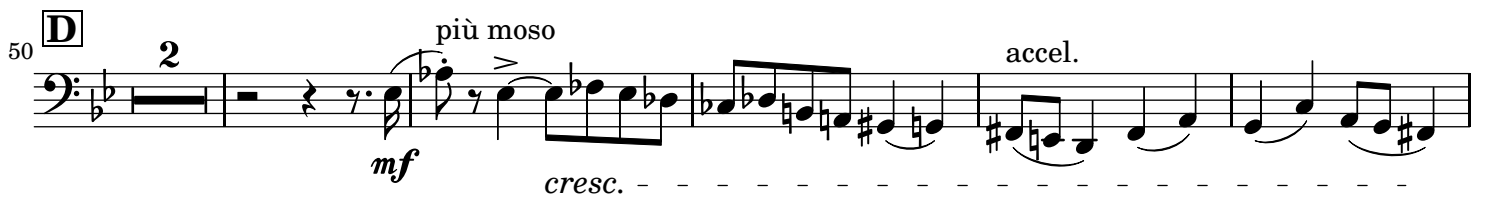
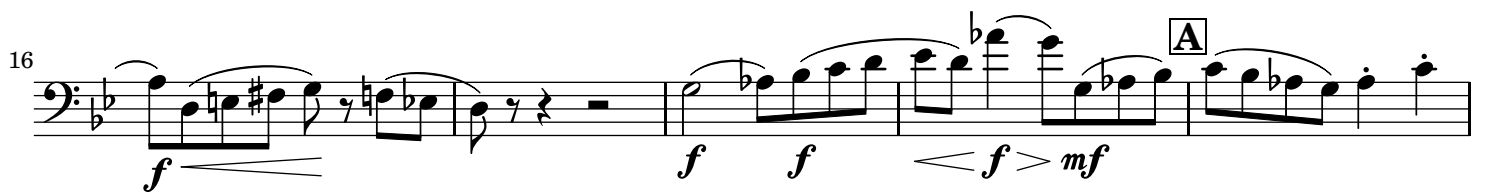
19

26

32

Violoncelle  
III - Gavotte

Allegro (♩ = 100)



73 *cresc.* *ff* allarg. molto

### IV - Menuet

Tranquillo (♩ = 120)

8 *p* *poco cresc.* *mf* *cresc.*

15 *molto* *ff*

23 *p* *mf* *p* *mf cresc.*

32 *p* *mf*

42 *ppp* *smorz.* *rit.*

56 *a tempo* *pp* *rit. e smorz.* *a tempo*

69 *cresc.* *f* *fp* *cresc.* *molto*

79 *ff*

87 *ff* *f* *mf* *p* *rit. e dim.*

104 **G** a tempo  
*p* poco cresc. *mf* cresc.

118 **H** rit. a tempo  
*ff* *mf* *p* *pp*

128 poco rit. **I** a tempo **J**  
 1 2 5  
*mf* *p* *pp* *ppp* perdendosi

### V - Gigue

Energico (♩. = 138)

11  
 6/16  
*f*

16 **A**  
*mf*

22 **B** 4 5  
*p dolce*

37 **C**  
*cresc.* *f*

43 **D**  
*fp* *p* *mf*

56 **E** *f* *pizz.* *dolce*

63 **F** *f* *arco* **G**

78

87 **H** *f*

98 **I** *f* *cresc.* *ff*

105 **J** *ffmf* *cresc.*

113 *fff* *Mouv. de la Sarabande rit.*