

16560^v
A



Ni Na

Libro

di capricci, e ricercati, composto e humilis^{ss} dedicato

Alla sacra Cesarea Maestà

di
Leopoldo primo

Libro Terzo.



da
Gio Giacomo Froberger

1
Sacra Cesarea Maestà

A' piedi della Maestà Vostra Cesarea prostrata, comparisci
quest'operetta, come parte dell'è mio debolzza, e tributo decoroso
alla liberalità Imperatoria. Confida anchor ella di esser ammessa
e gradita dalla Maestà V. con quell'innata clemenza che sono
Stati li precedenti, di che con profundissimo inchino Supplica

V. M^{ta} Ca
Es.

L'humil^{mo} fedel^{mo} e obligat^{mo} ser.
Gio Giacomo Froberger

Capriccio *tr.*

The first system of the handwritten musical score consists of four staves. The top staff is in treble clef with a common time signature (C). The second and third staves are in alto clef with a common time signature (C). The bottom staff is in bass clef with a common time signature (C). The music is written in a cursive, handwritten style. The first staff contains a melodic line with many slurs and ties. The second and third staves contain accompaniment with some slurs. The bottom staff contains a bass line with some rests and notes.

The second system of the handwritten musical score consists of four staves. The top staff is in treble clef. The second and third staves are in alto clef. The bottom staff is in bass clef. The music continues from the first system, featuring similar melodic and accompanimental lines with slurs and ties. The handwriting is consistent with the first system.



Handwritten musical score system 1, consisting of four staves. The notation includes treble clefs, a key signature of one sharp (F#), and a 7/8 time signature. The music features complex rhythmic patterns with many beamed notes and rests. The first staff begins with a fermata over a whole note. The second and third staves contain dense melodic lines with frequent sixteenth and thirty-second notes. The fourth staff provides a bass line with a mix of eighth and sixteenth notes.



Handwritten musical score system 2, consisting of four staves. The notation continues with treble clefs, a key signature of one sharp (F#), and a 7/8 time signature. The music is highly rhythmic and complex, with many beamed notes and rests. The first staff begins with a fermata over a whole note. The second and third staves contain dense melodic lines with frequent sixteenth and thirty-second notes. The fourth staff provides a bass line with a mix of eighth and sixteenth notes.

A handwritten musical score consisting of four staves. The top staff features a complex melodic line with many beamed eighth and sixteenth notes. The second and third staves appear to be accompaniment, with the second staff containing some accidentals (sharps and naturals). The bottom staff is in a lower register, possibly for a cello or bass, and contains a few notes and rests.

A second system of handwritten musical notation on four staves. The first measure of each staff contains a whole note. A repeat sign (two vertical lines with dots) is placed at the beginning of the second measure in each staff. The notation continues with various rhythmic patterns and accidentals. The bottom staff has a '3' written above it, possibly indicating a triplet or a specific fingering.

Handwritten musical notation on four staves. The notation includes various note values, rests, and slurs. The first staff begins with a treble clef and a key signature of one sharp (F#). The second and third staves also use treble clefs. The fourth staff uses a bass clef. The music is written in a cursive, historical style.

Handwritten musical notation on four staves, continuing the piece. The notation includes various note values, rests, and slurs. The first staff begins with a treble clef and a key signature of one sharp (F#). The second and third staves also use treble clefs. The fourth staff uses a bass clef. The music is written in a cursive, historical style.



Handwritten musical score system 1, consisting of four staves. The top staff features a complex melodic line with many sixteenth notes and slurs. The second and third staves contain more rhythmic and melodic accompaniment. The bottom staff is a bass line with fewer notes and rests. The notation is in dark ink on aged paper.



Handwritten musical score system 2, also consisting of four staves. This system continues the musical piece with similar complexity in the upper staves. The bottom staff continues the bass line. The notation is consistent with the first system, showing various note values, slurs, and accidentals.

Handwritten musical score system 1, consisting of four staves. The notation includes treble clefs on the first three staves and a bass clef on the fourth. The music features complex rhythmic patterns, including sixteenth and thirty-second notes, and various rests. A key signature change to one sharp (F#) is indicated by a sharp sign on the second staff.

Handwritten musical score system 2, consisting of four staves. The notation includes treble clefs on the first three staves and a bass clef on the fourth. The music continues with complex rhythmic patterns and includes a key signature change to one sharp (F#) on the second staff.

Handwritten musical score on four staves. The notation includes various note values, rests, and clefs. The right side of the page features large, stylized flourishes and the word "Finis" written in cursive.



Handwritten musical score on four staves. The notation includes various note values, rests, and clefs. The right side of the page features large, stylized flourishes and the word "Finis" written in cursive.

Five empty musical staves, each consisting of five horizontal lines, arranged vertically.



Five empty musical staves, each consisting of five horizontal lines, arranged vertically.

Capriccio .s.

The first system of the handwritten musical score consists of four staves. The top staff is in treble clef with a common time signature (C). The second and third staves are in alto clef with a common time signature (C). The bottom staff is in bass clef with a common time signature (C). The music is written in a cursive, handwritten style, featuring various note values, rests, and slurs across the four staves.

The second system of the handwritten musical score consists of four staves. The top staff is in treble clef with a common time signature (C). The second and third staves are in alto clef with a common time signature (C). The bottom staff is in bass clef with a common time signature (C). The music continues in the same cursive, handwritten style as the first system, with various note values, rests, and slurs.

The first system of the handwritten musical score consists of four staves. The top staff is in treble clef with a key signature of one sharp (F#). The second and third staves are in treble clef with a key signature of one flat (Bb). The bottom staff is in bass clef with a key signature of one flat (Bb). The notation includes various note values such as eighth, sixteenth, and quarter notes, as well as rests. The music is written in a fluid, cursive style characteristic of 18th-century manuscripts.

The second system of the handwritten musical score also consists of four staves. The top staff is in treble clef with a key signature of one sharp (F#). The second and third staves are in treble clef with a key signature of one flat (Bb). The bottom staff is in bass clef with a key signature of one flat (Bb). This system continues the musical piece with similar notation to the first system, including various note values and rests. The handwriting remains consistent and elegant.



Handwritten musical score system 1, consisting of four staves. The top staff is in treble clef, the second and third are in alto clef, and the bottom is in bass clef. The music features various note values, rests, and accidentals (sharps and naturals).



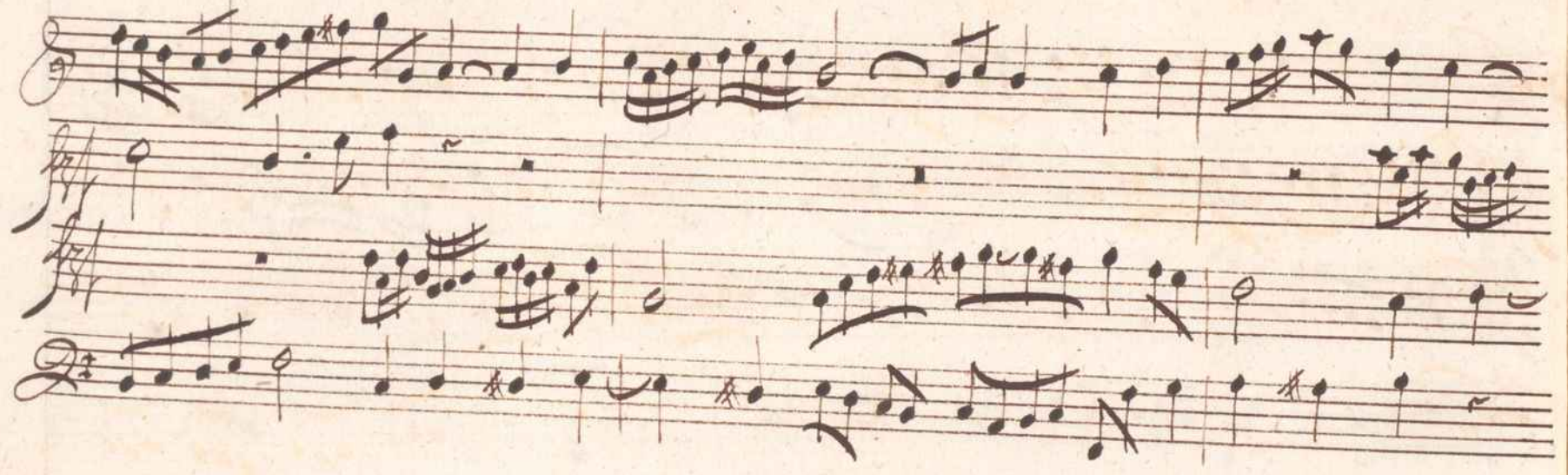
Handwritten musical score system 2, consisting of four staves. The top staff is in treble clef, the second and third are in alto clef, and the bottom is in bass clef. The music continues with various note values, rests, and accidentals.



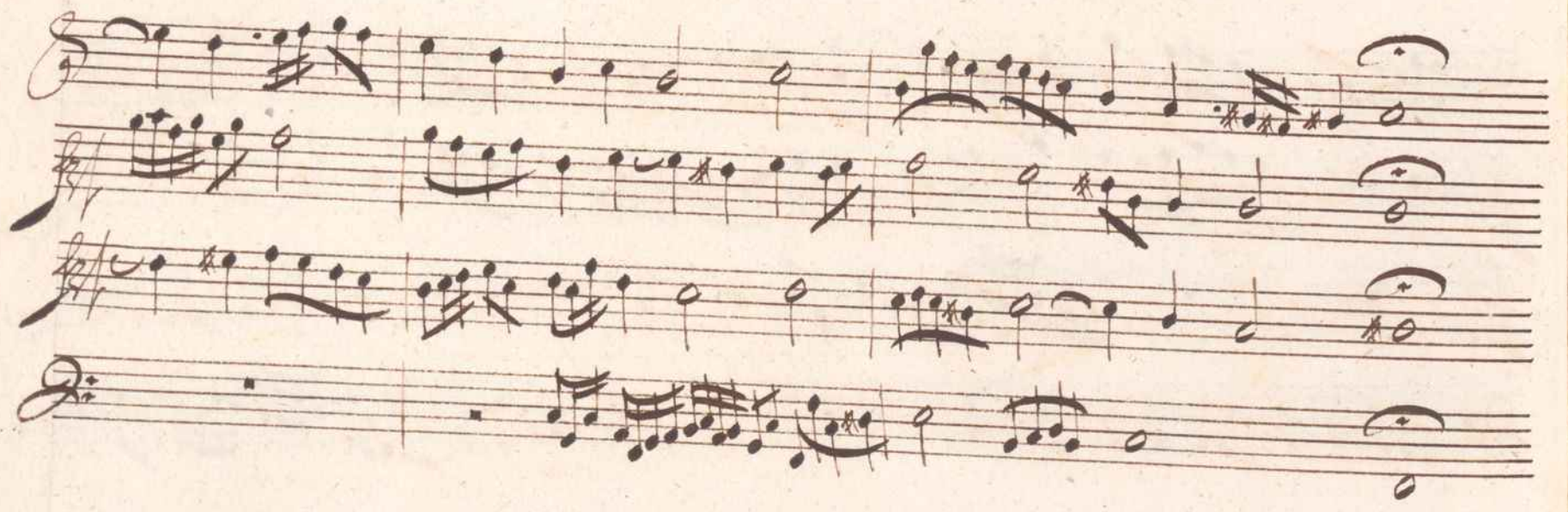
Handwritten musical score system 1, consisting of four staves. The top staff is in treble clef, the second and third are in alto clef, and the bottom is in bass clef. The music features various note values, rests, and accidentals.



Handwritten musical score system 2, consisting of four staves. The top staff is in treble clef, the second and third are in alto clef, and the bottom is in bass clef. The music continues with complex rhythmic patterns and melodic lines.



Handwritten musical score system 1, consisting of four staves. The top staff is in treble clef, the second and third are in alto clef, and the bottom is in bass clef. The music features complex rhythmic patterns, including sixteenth and thirty-second notes, and various rests.



Handwritten musical score system 2, consisting of four staves. The top staff is in treble clef, the second and third are in alto clef, and the bottom is in bass clef. The music continues with complex rhythmic patterns and rests, similar to the first system.

The first system of the handwritten musical score consists of four staves. The top staff is in treble clef, and the bottom staff is in bass clef. Both are in 6/8 time. The music begins with a whole rest on the first staff, followed by a melodic line of eighth and sixteenth notes. The second staff starts with a similar melodic line, followed by a whole note with a sharp sign. The third staff has a whole rest followed by a melodic line. The fourth staff has a whole rest followed by a melodic line.

The second system of the handwritten musical score also consists of four staves. The top staff is in treble clef, and the bottom staff is in bass clef. Both are in 6/8 time. The music continues with melodic lines in all four staves, featuring various note values and rests. The notation is consistent with the first system, showing a continuation of the piece.



Handwritten musical score system 1, consisting of four staves. The top staff is in treble clef, the second and third are in alto clef, and the bottom is in bass clef. The music features complex rhythmic patterns and melodic lines.



Handwritten musical score system 2, consisting of four staves. The top staff is in treble clef, the second and third are in alto clef, and the bottom is in bass clef. The music continues with intricate melodic and rhythmic development.

Handwritten musical notation on four staves. The notation includes various note values, rests, and clefs. The first staff begins with a treble clef and a key signature of one sharp (F#). The second staff begins with an alto clef. The third staff begins with a treble clef and a key signature of one sharp. The fourth staff begins with a bass clef and a key signature of one sharp. The music features a mix of eighth and sixteenth notes, often beamed together, and some rests.

Handwritten musical notation on four staves. The notation includes various note values, rests, and clefs. The first staff begins with a treble clef and a key signature of one sharp. The second staff begins with an alto clef. The third staff begins with a treble clef and a key signature of one sharp. The fourth staff begins with a bass clef and a key signature of one sharp. The music features a mix of eighth and sixteenth notes, often beamed together, and some rests. There are also some larger note values and a few accidentals.

The first system of the handwritten musical score consists of four staves. The top staff is in treble clef and contains a series of notes, including a half note with a flat. The second staff is in treble clef and features a melodic line with many eighth notes and some accidentals. The third staff is in treble clef and contains a series of quarter notes, with a diagonal slash through the notes in the middle. The bottom staff is in bass clef and contains a series of quarter notes.

The second system of the handwritten musical score also consists of four staves. The top staff is in treble clef and contains a series of notes, ending with a sharp sign and the letter 'm'. The second staff is in treble clef and contains a series of notes, ending with the letter 'm'. The third staff is in treble clef and contains a series of notes, ending with a sharp sign and the letter 'm'. The bottom staff is in bass clef and contains a series of notes, ending with the letter 'm'. The system concludes with a double bar line and a decorative flourish.

Capriccio *s.

Handwritten musical score for the first system of "Capriccio". It consists of four staves. The top two staves are in treble clef with a common time signature (C). The bottom two staves are in bass clef with a common time signature (C). The music features a complex melodic line in the upper staves, characterized by frequent sixteenth-note runs and slurs, and a more rhythmic accompaniment in the lower staves.

Handwritten musical score for the second system of "Capriccio". It consists of four staves. The top two staves are in treble clef with a common time signature (C). The bottom two staves are in bass clef with a common time signature (C). The music continues with intricate melodic passages and rhythmic accompaniment, showing a continuation of the complex textures from the first system.

The first system of handwritten musical notation consists of four staves. The top three staves are in treble clef, and the bottom staff is in bass clef. The notation includes various note values, rests, and slurs, with some notes marked with an asterisk (*).

The second system of handwritten musical notation also consists of four staves, with the top three in treble clef and the bottom in bass clef. This system features more complex rhythmic patterns, including sixteenth and thirty-second notes, and includes several slurs and asterisks.

The first system of the handwritten musical score consists of four staves. The top staff is a treble clef with a key signature of one sharp (F#) and a common time signature (C). It contains a melodic line with eighth and sixteenth notes, some beamed together, and a few rests. The second staff is a treble clef with a key signature of one sharp and a common time signature, containing a similar melodic line. The third staff is a treble clef with a key signature of one sharp and a common time signature, containing a melodic line with some rests. The fourth staff is a bass clef with a key signature of one sharp and a common time signature, containing a bass line with some rests and a few notes.

The second system of the handwritten musical score consists of four staves. The top staff is a treble clef with a key signature of one sharp and a common time signature, containing a melodic line with eighth and sixteenth notes, some beamed together, and a few rests. The second staff is a treble clef with a key signature of one sharp and a common time signature, containing a melodic line with eighth and sixteenth notes, some beamed together, and a few rests. The third staff is a treble clef with a key signature of one sharp and a common time signature, containing a melodic line with eighth and sixteenth notes, some beamed together, and a few rests. The fourth staff is a bass clef with a key signature of one sharp and a common time signature, containing a bass line with eighth and sixteenth notes, some beamed together, and a few rests.

The first system of the handwritten musical score consists of four staves. The top staff is in treble clef, the second and third are in treble clef, and the bottom is in bass clef. All staves are in 3/4 time. The music features a variety of note values, including quarter notes, eighth notes, and sixteenth notes, along with rests and accidentals (sharps and naturals). The notation is dense and characteristic of 18th or 19th-century manuscript notation.

The second system of the handwritten musical score continues the composition with four staves. It maintains the same clefs and 3/4 time signature as the first system. The notation includes complex rhythmic patterns with many beamed notes and rests, typical of the style. The handwriting is consistent with the first system, showing a clear progression of the musical piece.

The first system of the handwritten musical score consists of four staves. The top staff begins with a treble clef and a common time signature. It contains a series of notes, including a half note followed by a dotted half note, and a final measure with a half note and a dotted half note. The second staff continues the melody with a half note, a dotted half note, and a final measure with a half note and a dotted half note. The third staff features a half note, a dotted half note, and a final measure with a half note and a dotted half note. The bottom staff starts with a bass clef and a common time signature, followed by a series of notes, including a half note, a dotted half note, and a final measure with a half note and a dotted half note.

The second system of the handwritten musical score consists of four staves. The top staff begins with a treble clef and a common time signature. It contains a series of notes, including a half note, a dotted half note, and a final measure with a half note and a dotted half note. The second staff continues the melody with a half note, a dotted half note, and a final measure with a half note and a dotted half note. The third staff features a half note, a dotted half note, and a final measure with a half note and a dotted half note. The bottom staff starts with a bass clef and a common time signature, followed by a series of notes, including a half note, a dotted half note, and a final measure with a half note and a dotted half note.

The first system of the handwritten musical score consists of four staves. The top three staves are in treble clef, and the bottom staff is in bass clef. The key signature is two sharps (F# and C#), and the time signature is 12/8. The notation includes various note values, rests, and slurs. A double bar line is present after the first measure of each staff, with the number '12' written above it. The paper shows signs of age, including some staining and a small mark on the left edge.

The second system of the handwritten musical score continues the piece with four staves. The top three staves are in treble clef, and the bottom staff is in bass clef. The key signature and time signature remain consistent with the first system. The notation includes various note values, rests, and slurs. A double bar line is present after the first measure of each staff. The paper shows signs of age, including some staining and a small mark on the left edge.

The first system of the handwritten musical score consists of four staves. The top staff is in treble clef and begins with a treble clef symbol. The second staff is also in treble clef. The third staff is in treble clef. The bottom staff is in bass clef. The music includes various note values, rests, and slurs, with some notes marked with asterisks. The notation is dense and characteristic of 18th or 19th-century manuscript notation.

The second system of the handwritten musical score also consists of four staves. The top staff is in treble clef. The second staff is in treble clef. The third staff is in treble clef. The bottom staff is in bass clef. The notation continues with various note values, rests, and slurs, maintaining the style of the first system. The paper shows signs of age and wear.

The first system of handwritten musical notation consists of four staves. The top staff begins with a treble clef and a key signature of one sharp (F#). It contains a sequence of notes: a quarter note, a dotted quarter note, an eighth note, a quarter note, a half note, and a whole note. The second staff continues with a quarter note, a dotted quarter note, an eighth note, a quarter note, a half note, and a whole note. The third staff features a quarter note, a dotted quarter note, an eighth note, a quarter note, a half note, and a whole note. The bottom staff starts with a bass clef and a key signature of one sharp (F#), containing a quarter note, a dotted quarter note, an eighth note, a quarter note, a half note, and a whole note.

The second system of handwritten musical notation also consists of four staves. The top staff begins with a treble clef and a key signature of one sharp (F#). It contains a sequence of notes: a quarter note, a dotted quarter note, an eighth note, a quarter note, a half note, and a whole note. The second staff continues with a quarter note, a dotted quarter note, an eighth note, a quarter note, a half note, and a whole note. The third staff features a quarter note, a dotted quarter note, an eighth note, a quarter note, a half note, and a whole note. The bottom staff starts with a bass clef and a key signature of one sharp (F#), containing a quarter note, a dotted quarter note, an eighth note, a quarter note, a half note, and a whole note.

The first system of the handwritten musical score consists of four staves. The top staff begins with a treble clef and a key signature of one flat (B-flat). It contains a series of notes, including a half note, followed by a group of sixteenth notes, and then several quarter notes. The second staff starts with a treble clef and a whole rest, followed by a complex passage of sixteenth notes with a slur. The third staff begins with a treble clef and a whole note, followed by a series of sixteenth notes. The fourth staff starts with a bass clef and a key signature of one sharp (F-sharp), followed by a whole note and a final group of sixteenth notes with a slur.

The second system of the handwritten musical score also consists of four staves. The top staff begins with a treble clef and a key signature of one flat (B-flat), followed by a whole rest and then a series of sixteenth notes. The second staff starts with a treble clef and a whole rest, followed by a complex passage of sixteenth notes with a slur. The third staff begins with a treble clef and a key signature of one flat (B-flat), followed by a series of notes including a half note and quarter notes. The fourth staff starts with a bass clef and a key signature of one sharp (F-sharp), followed by a series of notes including a half note and quarter notes.

The first system of the handwritten musical score consists of four staves. The top staff begins with a treble clef and contains a series of quarter notes. The second staff also uses a treble clef and features a mix of quarter and eighth notes, with some beamed eighth notes. The third staff is marked with a treble clef and contains a complex passage of beamed eighth and sixteenth notes. The bottom staff is marked with a bass clef and contains a few quarter notes and rests.

The second system of the handwritten musical score also consists of four staves. The top staff begins with a treble clef and contains a series of quarter notes. The second staff is marked with a treble clef and features a mix of quarter and eighth notes, with some beamed eighth notes. The third staff is marked with a treble clef and contains a complex passage of beamed eighth and sixteenth notes. The bottom staff is marked with a bass clef and contains a few quarter notes and rests.

Handwritten musical score on four staves. The notation includes various note values, rests, and accidentals. The lyrics "na", "na", "na", and "na" are written below the staves. The piece concludes with a decorative flourish and the signature "S. Priano".

Five empty musical staves, each consisting of five horizontal lines, arranged vertically in the lower half of the page.

Capriccio n. 5.

The image displays a page of handwritten musical notation. At the top left, the page is numbered '15³'. The main title 'Capriccio n. 5.' is written in a cursive hand. The music is arranged in two systems, each containing four staves. The first system includes a treble clef staff with a common time signature (C) and a single note, followed by a treble clef staff with a complex sixteenth-note run, a bass clef staff with a common time signature (C) and a single note, and a bass clef staff with another sixteenth-note run. The second system continues with four staves of music, featuring various rhythmic patterns, slurs, and rests. The handwriting is elegant and characteristic of the 18th or 19th century.

Handwritten musical notation on four staves. The first staff begins with a treble clef and contains a melodic line with eighth and sixteenth notes. The second staff features a treble clef and a more complex melodic line with many beamed notes. The third staff has a treble clef and a melodic line with some accidentals. The fourth staff has a bass clef and a simple melodic line with quarter notes.

Handwritten musical notation on four staves. The first staff has a treble clef and a melodic line with many beamed notes. The second staff has a treble clef and a melodic line with many beamed notes. The third staff has a treble clef and a melodic line with many beamed notes. The fourth staff has a bass clef and a simple melodic line with quarter notes.



Handwritten musical score system 1, consisting of four staves. The top staff is in treble clef, the second and third are in alto clef, and the bottom is in bass clef. The notation includes various note values, rests, and slurs.



Handwritten musical score system 2, consisting of four staves. The top staff is in treble clef, the second and third are in alto clef, and the bottom is in bass clef. The notation includes various note values, rests, and slurs.



Handwritten musical score system 1, consisting of four staves. The top staff is in treble clef with a key signature of one sharp (F#). The second and third staves are in alto clef with a key signature of one sharp. The bottom staff is in bass clef with a key signature of one sharp. The music features various note values, including eighth and sixteenth notes, and rests.



Handwritten musical score system 2, consisting of four staves. The top staff is in treble clef with a key signature of one sharp. The second and third staves are in alto clef with a key signature of one sharp. The bottom staff is in bass clef with a key signature of one sharp. The music continues with similar notation to the first system, including various note values and rests.



Handwritten musical score system 1, consisting of four staves. The top staff is in treble clef, the second and third are in alto clef, and the bottom is in bass clef. The music features various note values, rests, and dynamic markings.



Handwritten musical score system 2, consisting of four staves. The top staff is in treble clef, the second and third are in alto clef, and the bottom is in bass clef. The music continues with similar notation to the first system.

The first system of handwritten musical notation consists of four staves. The top staff begins with a treble clef and contains a series of eighth notes, some beamed together. The second staff uses a soprano clef and features a mix of eighth and sixteenth notes. The third staff is in alto clef and contains a sequence of notes, including some with accidentals. The bottom staff is in bass clef and shows a more sparse arrangement of notes, including a whole note and a half note.

The second system of handwritten musical notation also consists of four staves. The top staff is in treble clef and contains a melodic line with various note values. The second staff is in soprano clef and contains a more complex melodic line with many beamed notes. The third staff is in alto clef and contains a series of notes, some with accidentals. The bottom staff is in bass clef and contains a series of notes, including a whole note and a half note.

The first system of the handwritten musical score consists of four staves. The top staff begins with a treble clef and a common time signature. It contains several measures of music, including a whole rest, followed by a series of eighth and sixteenth notes, and a final measure with a half note. The second staff starts with an alto clef and contains a series of eighth and sixteenth notes. The third staff begins with a soprano clef and contains a series of eighth and sixteenth notes. The fourth staff starts with a bass clef and contains a series of eighth and sixteenth notes.

The second system of the handwritten musical score consists of four staves. The top staff begins with a treble clef and contains several measures of music, including a whole note, followed by a half note, and a final measure with a half note. Below the notes are the lyrics "nu". The second staff starts with an alto clef and contains a series of eighth and sixteenth notes, followed by a half note and a final measure with a half note. Below the notes are the lyrics "nu". The third staff begins with a soprano clef and contains a series of eighth and sixteenth notes, followed by a half note and a final measure with a half note. Below the notes are the lyrics "nu". The fourth staff starts with a bass clef and contains a series of eighth and sixteenth notes, followed by a half note and a final measure with a half note. Below the notes are the lyrics "ria + s". The right side of the system is heavily scribbled over with diagonal lines.

Capriccio.

The first system of handwritten musical notation consists of four staves. The top staff is in treble clef with a key signature of one flat (B-flat) and a common time signature (C). It contains a melodic line with various note values and rests. The second staff is in alto clef with a common time signature (C) and contains a similar melodic line. The third staff is in alto clef with a common time signature (C) and contains a melodic line. The fourth staff is in bass clef with a common time signature (C) and contains a melodic line. The notation is written in a cursive, historical style.

The second system of handwritten musical notation also consists of four staves. The top staff is in treble clef with a key signature of one flat (B-flat) and a common time signature (C). It contains a melodic line with various note values and rests. The second staff is in alto clef with a common time signature (C) and contains a melodic line. The third staff is in alto clef with a common time signature (C) and contains a melodic line. The fourth staff is in bass clef with a common time signature (C) and contains a melodic line. The notation is written in a cursive, historical style.

Handwritten musical score on page 19, top system. It consists of four staves. The first staff is in treble clef with a key signature of one flat (B-flat). The second staff is in treble clef with a key signature of one flat. The third staff is in treble clef with a key signature of one flat. The fourth staff is in bass clef with a key signature of one flat. The music features various rhythmic values, including eighth and sixteenth notes, and rests. There are some markings above the staves, possibly indicating fingerings or breath marks.

Handwritten musical score on page 19, bottom system. It consists of four staves. The first staff is in treble clef with a key signature of one flat. The second staff is in treble clef with a key signature of one flat. The third staff is in treble clef with a key signature of one flat. The fourth staff is in bass clef with a key signature of one flat. The music features various rhythmic values, including eighth and sixteenth notes, and rests. There are some markings above the staves, possibly indicating fingerings or breath marks.

The first system of the handwritten musical score consists of four staves. The top staff is in treble clef and contains a melodic line with eighth and sixteenth notes, some beamed together. The second staff is in treble clef and contains a line of quarter notes. The third staff is in treble clef and contains a line of quarter notes. The bottom staff is in bass clef and contains a line of quarter notes. The music is written in a historical style with some decorative flourishes.

The second system of the handwritten musical score also consists of four staves. The top staff is in treble clef and contains a melodic line with quarter and eighth notes. The second staff is in treble clef and contains a line of quarter notes. The third staff is in treble clef and contains a line of quarter notes. The bottom staff is in bass clef and contains a line of quarter notes. The music continues with similar notation and some decorative elements.

The first system of handwritten musical notation on page 20 consists of four staves. The top staff is in treble clef with a key signature of one flat (B-flat). The second and third staves are in alto clef with a key signature of one flat. The bottom staff is in bass clef with a key signature of one flat. The notation includes various note values, rests, and dynamic markings.

The second system of handwritten musical notation on page 20 also consists of four staves. The top staff is in treble clef with a key signature of one flat. The second and third staves are in alto clef with a key signature of one flat. The bottom staff is in bass clef with a key signature of one flat. The notation includes various note values, rests, and dynamic markings.

Handwritten musical notation on four staves. The notation includes various note values, rests, and accidentals. The first staff begins with a treble clef and a key signature of one sharp (F#). The second and third staves begin with a treble clef and a key signature of two sharps (F# and C#). The fourth staff begins with a bass clef and a key signature of one sharp (F#). The music is written in a fluid, cursive style characteristic of 18th-century manuscripts.

Handwritten musical notation on four staves. The notation includes various note values, rests, and accidentals. The first staff begins with a treble clef and a key signature of one sharp (F#). The second and third staves begin with a treble clef and a key signature of two sharps (F# and C#). The fourth staff begins with a bass clef and a key signature of one sharp (F#). The music is written in a fluid, cursive style characteristic of 18th-century manuscripts. Large, decorative flourishes are present, particularly in the second and third staves. The word "Finis" is written in the fourth staff.

Capriccio *g+*

Handwritten musical notation on four staves. The notation includes various note values (quarter, eighth, and sixteenth notes), rests, and accidentals (sharps and naturals). The first staff begins with a treble clef and a common time signature. The second staff begins with an alto clef. The third staff begins with a treble clef. The fourth staff begins with a bass clef. The music is written in a single system across these four staves.

Handwritten musical notation on four staves. The notation includes various note values (quarter, eighth, and sixteenth notes), rests, and accidentals (sharps and naturals). The first staff begins with a treble clef and a common time signature. The second staff begins with an alto clef. The third staff begins with a treble clef. The fourth staff begins with a bass clef. The music is written in a single system across these four staves.

The first system of the handwritten musical score consists of four staves. The top staff is in treble clef and contains a sequence of notes including quarter, eighth, and sixteenth notes, with some rests. The second staff is in treble clef and features a similar rhythmic pattern with some accidentals. The third staff is in treble clef and shows more complex rhythmic figures with slurs. The bottom staff is in bass clef and provides a harmonic foundation with a steady rhythm of quarter and eighth notes.

The second system of the handwritten musical score also consists of four staves. The top staff is in treble clef and continues the melodic line with various note values and rests. The second staff is in treble clef and features a more active melodic line with many sixteenth notes. The third staff is in treble clef and continues the complex rhythmic patterns with slurs and ties. The bottom staff is in bass clef and maintains the harmonic support with a consistent rhythmic pattern.



Handwritten musical score system 1, consisting of four staves. The top staff is in treble clef with a key signature of one sharp (F#). The second and third staves are in treble clef with a key signature of one sharp (F#). The bottom staff is in bass clef with a key signature of one sharp (F#). The music features various note values including quarter, eighth, and sixteenth notes, as well as rests and slurs.



Handwritten musical score system 2, consisting of four staves. The top staff is in treble clef with a key signature of one sharp (F#). The second and third staves are in treble clef with a key signature of one sharp (F#). The bottom staff is in bass clef with a key signature of one sharp (F#). The music continues with various note values and rests, including a prominent slur in the second staff.

The first system of the handwritten musical score consists of four staves. The top staff is in treble clef and begins with a whole rest, followed by a series of eighth and sixteenth notes, some beamed together. The second staff is in alto clef and contains a sequence of notes, including a prominent slur over a group of notes. The third staff is in alto clef and starts with a whole rest, followed by notes and a slur. The bottom staff is in bass clef and begins with a whole note, followed by a series of notes and rests.

The second system of the handwritten musical score also consists of four staves. The top staff is in treble clef and features a complex melodic line with many beamed notes and slurs. The second staff is in alto clef and contains several whole rests followed by notes. The third staff is in alto clef and shows a melodic line with slurs and various note values. The bottom staff is in bass clef and contains notes and rests, including a slur over a group of notes.

The first system of handwritten musical notation consists of four staves. The top staff is in treble clef and contains a melodic line with eighth and sixteenth notes, some beamed together, and rests. The second and third staves are in alto clef and contain accompaniment with quarter and eighth notes. The bottom staff is in bass clef and contains a bass line with quarter and eighth notes. The system concludes with a double bar line.

The second system of handwritten musical notation also consists of four staves. The top staff is in treble clef and features a melodic line with quarter and eighth notes, some with slurs. The second and third staves are in alto clef and provide accompaniment with quarter and eighth notes. The bottom staff is in bass clef and contains a bass line with quarter and eighth notes. The system concludes with a double bar line.



Handwritten musical score system 1, consisting of four staves. The top staff is in treble clef, the second and third are in alto clef, and the bottom is in bass clef. The music features various note values, rests, and slurs.



Handwritten musical score system 2, consisting of four staves. The top staff is in treble clef, the second and third are in alto clef, and the bottom is in bass clef. The music continues with various note values, rests, and slurs.

Handwritten musical notation on four staves. The first staff begins with a treble clef and a key signature of one flat. The second and third staves use alto and tenor clefs, respectively. The fourth staff uses a bass clef. The notation includes various note values, rests, and slurs.

Handwritten musical notation on four staves, continuing the piece. The notation includes various note values, rests, and slurs, consistent with the first system.

Handwritten musical score on four staves. The first staff uses a treble clef and contains a sequence of notes including a dotted quarter note, an eighth note, and a half note. The second staff uses a treble clef and features a complex passage with many sixteenth notes. The third staff uses a treble clef and contains a mix of eighth and quarter notes. The fourth staff uses a bass clef and contains a simple sequence of quarter notes. To the right of the notes, there are four eye-shaped symbols, each with the letter 'M' written below it. Further to the right, there are large, sweeping, scribbled lines that appear to be a signature or a decorative flourish. The word 'aria' is written in cursive on the fourth staff, followed by a double bar line and a fermata symbol.

Five empty musical staves, each consisting of five horizontal lines, arranged vertically in the lower half of the page.

Ricercar + s.

The first system of the handwritten musical score consists of four staves. The top staff is a treble clef with a key signature of one flat (B-flat) and a common time signature (C). It contains six measures of music, each with a single quarter rest. The second staff is a treble clef with a key signature of one flat and a common time signature. It contains six measures of music: the first two are quarter rests, the third is a dotted quarter note, the fourth is an eighth note, the fifth is a quarter note, and the sixth is a half note. The third staff is a treble clef with a key signature of one flat and a common time signature. It contains six measures of music: the first two are quarter notes, the third is a dotted quarter note, the fourth is an eighth note, the fifth is a quarter note, and the sixth is a half note. The fourth staff is a bass clef with a key signature of one flat and a common time signature. It contains six measures of music, each with a single quarter rest.

The second system of the handwritten musical score consists of four staves. The top staff is a treble clef with a key signature of one flat and a common time signature. It contains six measures of music: the first two are quarter rests, the third is a dotted quarter note, the fourth is an eighth note, the fifth is a quarter note, and the sixth is a half note. The second staff is a treble clef with a key signature of one flat and a common time signature. It contains six measures of music: the first two are quarter notes, the third is a dotted quarter note, the fourth is an eighth note, the fifth is a quarter note, and the sixth is a half note. The third staff is a treble clef with a key signature of one flat and a common time signature. It contains six measures of music: the first two are quarter notes, the third is a dotted quarter note, the fourth is an eighth note, the fifth is a quarter note, and the sixth is a half note. The fourth staff is a bass clef with a key signature of one flat and a common time signature. It contains six measures of music, each with a single quarter rest.

The first system of handwritten musical notation consists of four staves. The top staff is in treble clef with a key signature of one sharp (F#) and a common time signature (C). It begins with a half note G4, followed by quarter notes A4, B4, C5, D5, E5, and F#5. The second staff is in treble clef with a key signature of one sharp and a common time signature, starting with a half note G4 and followed by quarter notes A4, B4, C5, D5, E5, and F#5. The third staff is in treble clef with a key signature of one sharp and a common time signature, starting with a half note G4 and followed by quarter notes A4, B4, C5, D5, E5, and F#5. The fourth staff is in bass clef with a key signature of one sharp and a common time signature, starting with a half note G3 and followed by quarter notes F#3, E3, D3, C3, B2, and A2.

The second system of handwritten musical notation consists of four staves. The top staff is in treble clef with a key signature of one sharp and a common time signature, starting with a half note G4 and followed by quarter notes A4, B4, C5, D5, E5, and F#5. The second staff is in treble clef with a key signature of one sharp and a common time signature, starting with a half note G4 and followed by quarter notes A4, B4, C5, D5, E5, and F#5. The third staff is in treble clef with a key signature of one sharp and a common time signature, starting with a half note G4 and followed by quarter notes A4, B4, C5, D5, E5, and F#5. The fourth staff is in bass clef with a key signature of one sharp and a common time signature, starting with a half note G3 and followed by quarter notes F#3, E3, D3, C3, B2, and A2.

The first system of the handwritten musical score consists of four staves. The top two staves are in treble clef, and the bottom two are in bass clef. The music is written in a single system with a common time signature. The notation includes a variety of note values, including quarter, eighth, and sixteenth notes, as well as rests and accidentals (sharps and naturals). The first staff begins with a treble clef and a key signature of one sharp (F#). The second staff continues the melodic line with similar note values and accidentals. The third and fourth staves provide a harmonic accompaniment, with the third staff featuring a series of quarter notes and the fourth staff featuring a series of eighth notes.

The second system of the handwritten musical score also consists of four staves, continuing the piece from the first system. The notation is consistent with the first system, featuring a mix of note values and accidentals. The first staff begins with a treble clef and a key signature of one sharp. The second staff continues the melodic line with similar note values and accidentals. The third and fourth staves provide a harmonic accompaniment, with the third staff featuring a series of quarter notes and the fourth staff featuring a series of eighth notes. The system concludes with a final note on the first staff.

The first system of the handwritten musical score consists of four staves. The top two staves are in treble clef, and the bottom two are in bass clef. The music is written in a common time signature. The notation includes quarter notes, eighth notes, and rests. There are several slurs and accents throughout the system. The paper shows signs of age with some staining.

The second system of the handwritten musical score continues the composition with four staves. It maintains the same clef and time signature as the first system. The notation is dense, featuring many eighth and sixteenth notes, along with rests and slurs. The handwriting is consistent with the first system, and the paper's texture and color are clearly visible.

The first system of handwritten musical notation consists of four staves. The top staff begins with a treble clef and a key signature of one sharp (F#). It contains several measures with half notes and quarter notes, some with stems pointing down. The second staff continues the melody with similar note values and includes some beamed eighth notes. The third staff features a more active line with eighth and sixteenth notes, some marked with an 'x'. The bottom staff is in a bass clef and contains mostly quarter and half notes, some with stems pointing up.

The second system of handwritten musical notation also consists of four staves. The top staff is in a treble clef and shows a continuation of the melodic line with half and quarter notes. The second staff has a more rhythmic feel with eighth and sixteenth notes. The third staff is highly active with many sixteenth and thirty-second notes, some beamed together. The bottom staff continues the bass line with quarter and half notes, some with stems pointing up.

Handwritten musical score on page 28, system 1. The system consists of four staves. The top staff is a vocal line with a treble clef and a key signature of one flat (B-flat). It begins with a first ending bracket over a group of notes. The second staff is a piano accompaniment with a treble clef, featuring a complex melodic line with many slurs and accidentals. The third staff is a piano accompaniment with a treble clef, showing a more rhythmic and harmonic line. The fourth staff is a piano accompaniment with a bass clef, providing a steady bass line with some harmonic support.

Handwritten musical score on page 28, system 2. The system consists of four staves. The top staff is a vocal line with a treble clef and a key signature of one flat. It contains several measures with accidentals and slurs. The second staff is a piano accompaniment with a treble clef, continuing the complex melodic line from the first system. The third staff is a piano accompaniment with a treble clef, continuing the rhythmic and harmonic line. The fourth staff is a piano accompaniment with a bass clef, continuing the steady bass line.

The first system of the handwritten musical score consists of four staves. The top staff is in treble clef and contains a melodic line with eighth and sixteenth notes, some with slurs and accents. The second staff is also in treble clef and features a more rhythmic accompaniment with quarter and eighth notes. The third staff is in treble clef and contains a bass line with quarter notes and rests. The bottom staff is in bass clef and provides a harmonic foundation with quarter notes and rests. The notation is clear and well-organized, typical of a professional manuscript.

The second system of the handwritten musical score continues the composition with four staves. The top staff in treble clef shows a melodic line with a prominent slur and a fermata. The second staff in treble clef continues the accompaniment with eighth notes and slurs. The third staff in treble clef shows a bass line with quarter notes and rests. The bottom staff in bass clef provides a harmonic foundation with quarter notes and rests. The notation is consistent with the first system, maintaining a clear and professional appearance.

The first system of the handwritten musical score consists of four staves. The top three staves are in treble clef with a key signature of one sharp (F#) and a common time signature (C). The bottom staff is in bass clef with a key signature of one sharp (F#) and a common time signature (C). The notation includes various note values, rests, and accidentals.

The second system of the handwritten musical score consists of four staves. The top three staves are in treble clef with a key signature of one sharp (F#) and a common time signature (C). The bottom staff is in bass clef with a key signature of one sharp (F#) and a common time signature (C). The notation includes various note values, rests, and accidentals. Below the notes, the lyrics "nu", "nu", "su", and "nu" are written. A large, dark scribble covers the right side of the system, partially obscuring the notation and the word "aria" written at the bottom right.

Ricercar. s.

Handwritten musical score for the first system of "Ricercar. s.". The system consists of four staves. The top three staves are for voices, each beginning with a treble clef and a common time signature (C). The bottom staff is for a lute or guitar, beginning with a C-clef on the first line and a common time signature. The music is written in a historical style with various note values and rests.

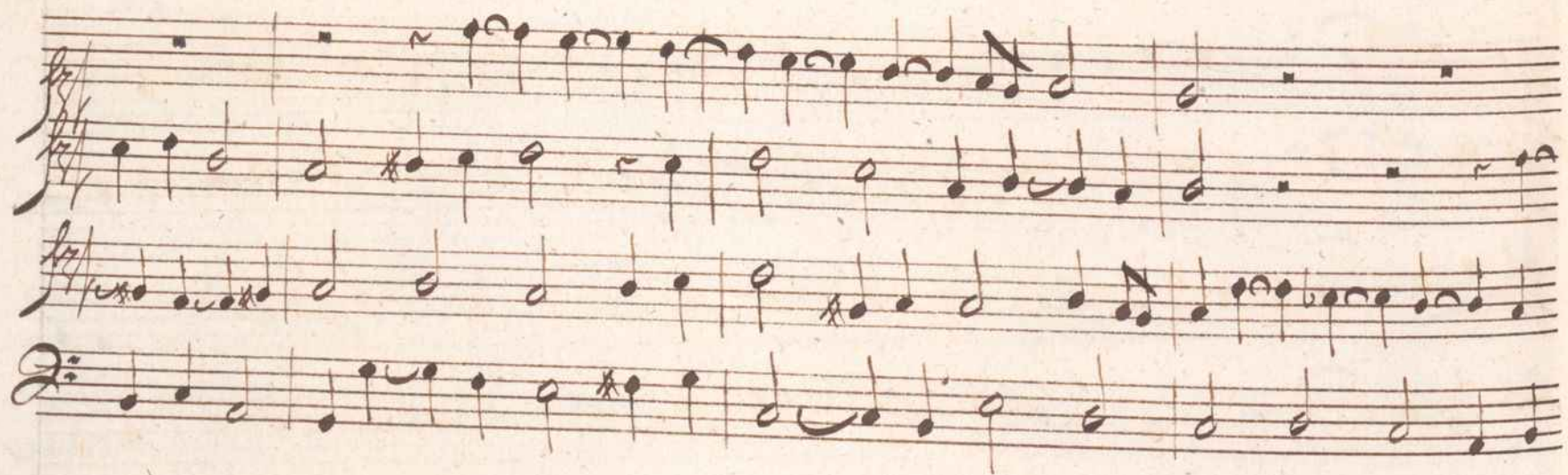
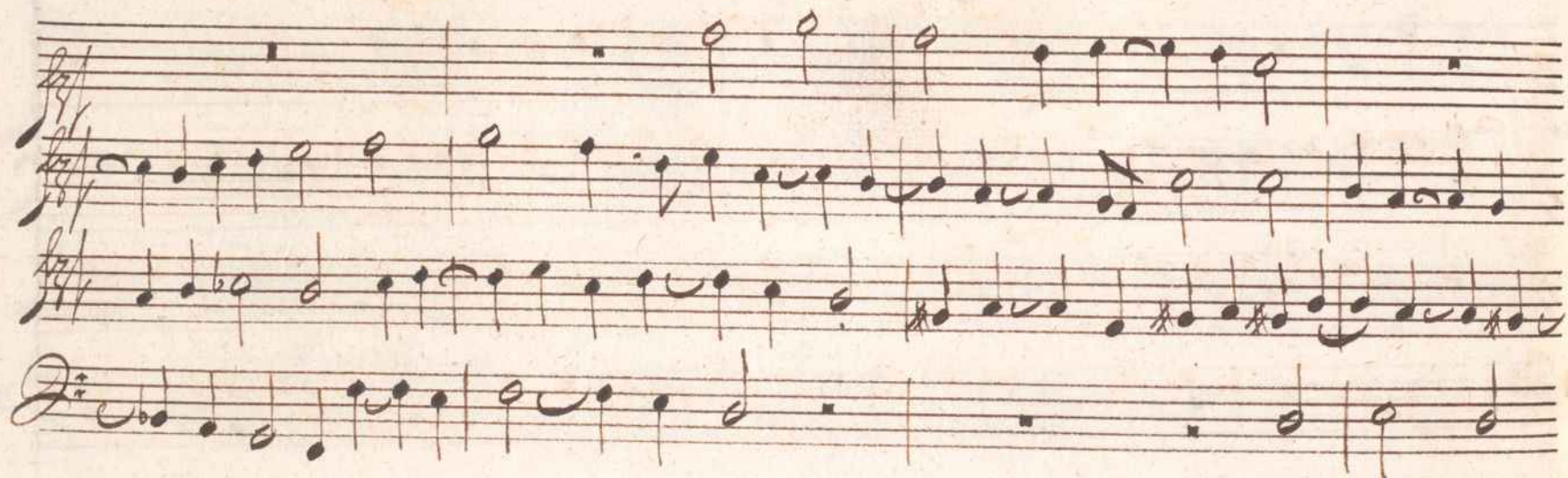
Handwritten musical score for the second system of "Ricercar. s.". The system consists of four staves. The top three staves are for voices, each beginning with a treble clef. The bottom staff is for a lute or guitar, beginning with a C-clef on the first line. The music continues with various note values and rests, maintaining the historical style of the first system.

The first system of the handwritten musical score consists of four staves. The top staff is a treble clef with a key signature of one sharp (F#) and a 4/4 time signature. It contains a melodic line with eighth and sixteenth notes, some beamed together, and rests. The second staff is a treble clef with a key signature of one sharp and a 4/4 time signature, featuring a bass line with quarter and eighth notes. The third staff is a treble clef with a key signature of one sharp and a 4/4 time signature, containing a bass line with quarter notes and rests. The fourth staff is a bass clef with a key signature of one sharp and a 4/4 time signature, featuring a melodic line with quarter and eighth notes, including a half note with a flat (Bb) and a quarter note with a flat (F#).

The second system of the handwritten musical score continues with four staves. The top staff is a treble clef with a key signature of one sharp and a 4/4 time signature, showing a melodic line with quarter and eighth notes. The second staff is a treble clef with a key signature of one sharp and a 4/4 time signature, featuring a bass line with quarter and eighth notes. The third staff is a treble clef with a key signature of one sharp and a 4/4 time signature, containing a bass line with quarter notes and rests. The fourth staff is a bass clef with a key signature of one sharp and a 4/4 time signature, featuring a melodic line with quarter and eighth notes, including a half note with a flat (Bb) and a quarter note with a flat (F#).

The first system of the handwritten musical score consists of four staves. The top staff begins with a treble clef and a key signature of one sharp (F#). It contains several measures of music, including quarter notes, eighth notes, and rests. The second staff continues the melody with similar rhythmic values. The third staff appears to be a harmonic accompaniment, featuring chords and single notes. The bottom staff, which begins with a bass clef, provides a steady bass line with quarter and eighth notes.

The second system of the handwritten musical score also consists of four staves. The notation continues from the first system. The top staff shows a melodic line with some slurs and ties. The second staff has a more active part with many eighth notes. The third staff continues with a sparse accompaniment. The bottom staff maintains the bass line with occasional rests and ties.



The first system of the handwritten musical score consists of four staves. The top staff begins with a treble clef and a key signature of one sharp (F#). It contains a series of eighth and sixteenth notes, some with slurs and accents. The second and third staves are in the same clef and key signature, with similar rhythmic patterns and some slurs. The bottom staff is in a different clef, likely a bass clef, and contains a more melodic line with some rests. The system concludes with a double bar line and a fermata over the final note.

The second system of the handwritten musical score also consists of four staves. The top staff begins with a treble clef and a key signature of one sharp (F#). It contains a series of eighth and sixteenth notes, some with slurs and accents. The second and third staves are in the same clef and key signature, with similar rhythmic patterns and some slurs. The bottom staff is in a different clef, likely a bass clef, and contains a more melodic line with some rests. The system concludes with a double bar line and a fermata over the final note.

Handwritten musical score on page 32, first system. The system consists of four staves. The top staff is a treble clef with a key signature of one sharp (F#) and a common time signature (C). The second and third staves are also treble clefs with the same key signature and time signature. The bottom staff is a bass clef with the same key signature and time signature. The music is written in a style characteristic of 18th or 19th-century manuscript notation, featuring various note values, rests, and bar lines.

Handwritten musical score on page 32, second system. The system consists of four staves. The top staff is a treble clef with a key signature of one sharp (F#) and a common time signature (C). The second and third staves are also treble clefs with the same key signature and time signature. The bottom staff is a bass clef with the same key signature and time signature. The music is written in a style characteristic of 18th or 19th-century manuscript notation, featuring various note values, rests, and bar lines. The system concludes with the word "su" on the top staff, "in" on the second staff, "na" on the third staff, and "su" on the bottom staff. A large, stylized flourish or signature is written across the right side of the system, overlapping the staves. The word "priange" is written in the bottom right corner of the system.

Ricercar 3.

The first system of handwritten musical notation consists of four staves. The top three staves are in treble clef with a common time signature (C). The top staff contains a melodic line with various note values including minims, crotchets, and quavers. The second and third staves appear to be accompaniment, with the second staff containing mostly rests and the third staff containing a more active melodic line. The fourth staff is in bass clef with a common time signature (C) and contains a simple bass line with rests.

The second system of handwritten musical notation also consists of four staves. The top three staves are in treble clef with a common time signature (C). The top staff continues the melodic line from the first system. The second and third staves continue the accompaniment. The fourth staff is in bass clef with a common time signature (C) and continues the bass line.

Handwritten musical score on page 33, system 1. The system consists of four staves. The top three staves are in treble clef with a key signature of one flat (B-flat). The bottom staff is in bass clef with a key signature of two flats (B-flat and E-flat). The music is written in a style characteristic of the 18th or 19th century, featuring various note values, rests, and phrasing slurs.

Handwritten musical score on page 33, system 2. The system consists of four staves, continuing the piece from the first system. The notation is consistent with the first system, showing melodic lines in the upper staves and a bass line in the lower staff. The paper shows signs of age, including some staining and a metal fastener on the left edge.

Handwritten musical notation on four staves. The notation includes various note values (quarter, eighth, and sixteenth notes), rests, and bar lines. The music is written in a single system across four staves. The first staff begins with a treble clef and a key signature of one flat. The notation is dense with notes, particularly in the lower staves, and includes some decorative flourishes.

Handwritten musical notation on four staves, continuing the piece from the first system. The notation features a mix of note values and rests, with some staves showing more active melodic lines. The handwriting is consistent with the first system, and the overall structure follows a similar four-staff layout.



Handwritten musical score system 1, consisting of four staves. The top staff is a treble clef with a key signature of one flat and a common time signature. It contains a melodic line with various note values and rests. The second staff is a treble clef with a key signature of one flat, containing a bass line with mostly whole notes. The third staff is a treble clef with a key signature of one flat, containing a bass line with mostly whole notes. The fourth staff is a bass clef with a key signature of one flat, containing a bass line with mostly whole notes.



Handwritten musical score system 2, consisting of four staves. The top staff is a treble clef with a key signature of one flat and a common time signature. It contains a melodic line with various note values and rests. The second staff is a treble clef with a key signature of one flat, containing a bass line with mostly whole notes. The third staff is a treble clef with a key signature of one flat, containing a bass line with mostly whole notes. The fourth staff is a bass clef with a key signature of one flat, containing a bass line with mostly whole notes.

The first system of the handwritten musical score consists of four staves. The top staff is in treble clef with a key signature of one flat (B-flat) and contains a series of half notes, each with a slur above it. The second and third staves are in treble clef with a key signature of one flat and contain a melodic line of eighth and sixteenth notes. The bottom staff is in bass clef with a key signature of one flat and contains a bass line of eighth and sixteenth notes. A measure rest is present at the end of each staff in the system.

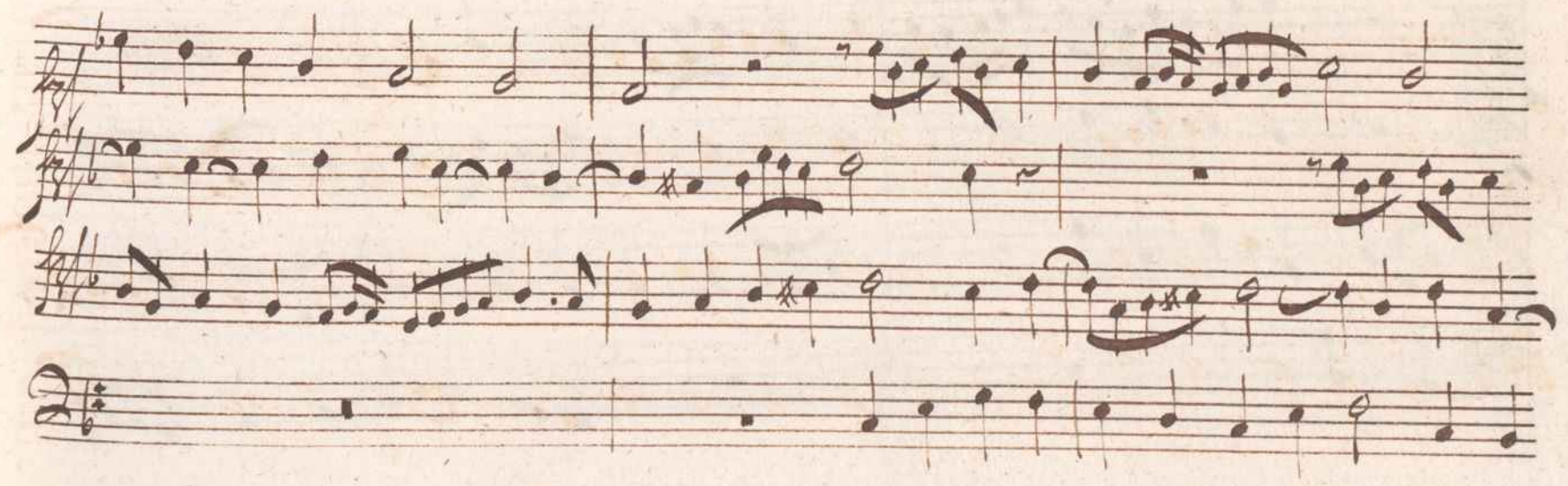
The second system of the handwritten musical score consists of four staves. The top staff is in treble clef with a key signature of one flat and contains a melodic line of eighth and sixteenth notes. The second and third staves are in treble clef with a key signature of one flat and contain a melodic line of eighth and sixteenth notes. The bottom staff is in bass clef with a key signature of one flat and contains a bass line of eighth and sixteenth notes. A measure rest is present at the beginning of each staff in the system.

The first system of the handwritten musical score consists of four staves. The top staff is a treble clef with a key signature of one flat (B-flat) and a common time signature (C). It begins with a melodic line of eighth and sixteenth notes. The second staff is also a treble clef with the same key signature and time signature, featuring a similar melodic line. The third staff is a treble clef with the same key signature and time signature, containing mostly whole and half notes. The fourth staff is a bass clef with the same key signature and time signature, also containing mostly whole and half notes. The system concludes with a double bar line.

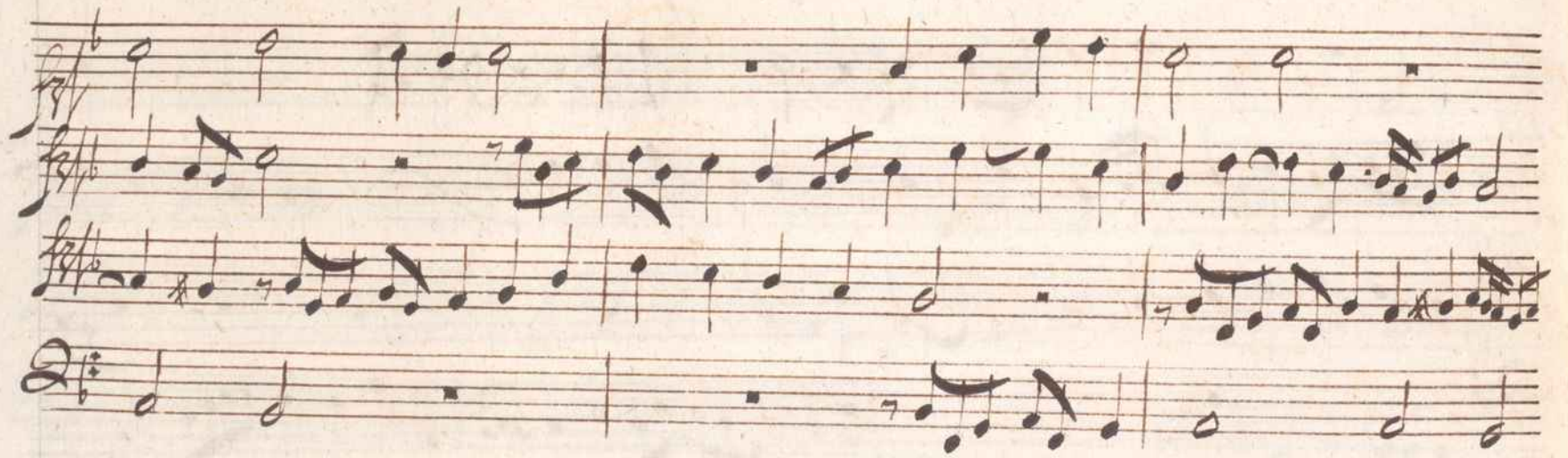
The second system of the handwritten musical score consists of four staves. The top staff is a treble clef with a key signature of one flat (B-flat) and a common time signature (C). It begins with a melodic line of eighth and sixteenth notes. The second staff is also a treble clef with the same key signature and time signature, featuring a similar melodic line. The third staff is a treble clef with the same key signature and time signature, containing mostly whole and half notes. The fourth staff is a bass clef with the same key signature and time signature, also containing mostly whole and half notes. The system concludes with a double bar line.



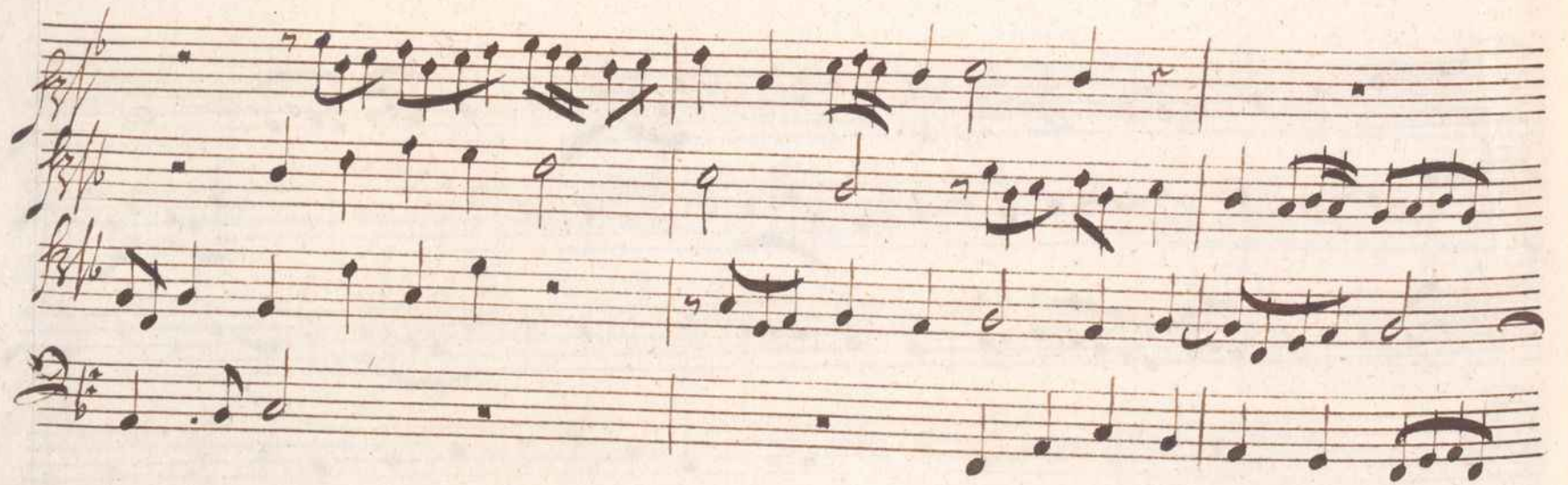
Handwritten musical score system 1, consisting of four staves. The top staff is in treble clef with a key signature of one flat (B-flat) and a common time signature. The second and third staves are in treble clef with a key signature of one flat. The bottom staff is in bass clef with a key signature of one flat. The notation includes various note values, rests, and slurs.



Handwritten musical score system 2, consisting of four staves. The top staff is in treble clef with a key signature of one flat. The second and third staves are in treble clef with a key signature of one flat. The bottom staff is in bass clef with a key signature of one flat. The notation includes various note values, rests, and slurs.



Handwritten musical score system 1, consisting of four staves. The top three staves are in treble clef with a key signature of one flat (B-flat). The bottom staff is in bass clef with a key signature of two flats (B-flat and E-flat). The notation includes various note values, rests, and slurs.



Handwritten musical score system 2, consisting of four staves. The top three staves are in treble clef with a key signature of one flat (B-flat). The bottom staff is in bass clef with a key signature of two flats (B-flat and E-flat). The notation includes various note values, rests, and slurs.

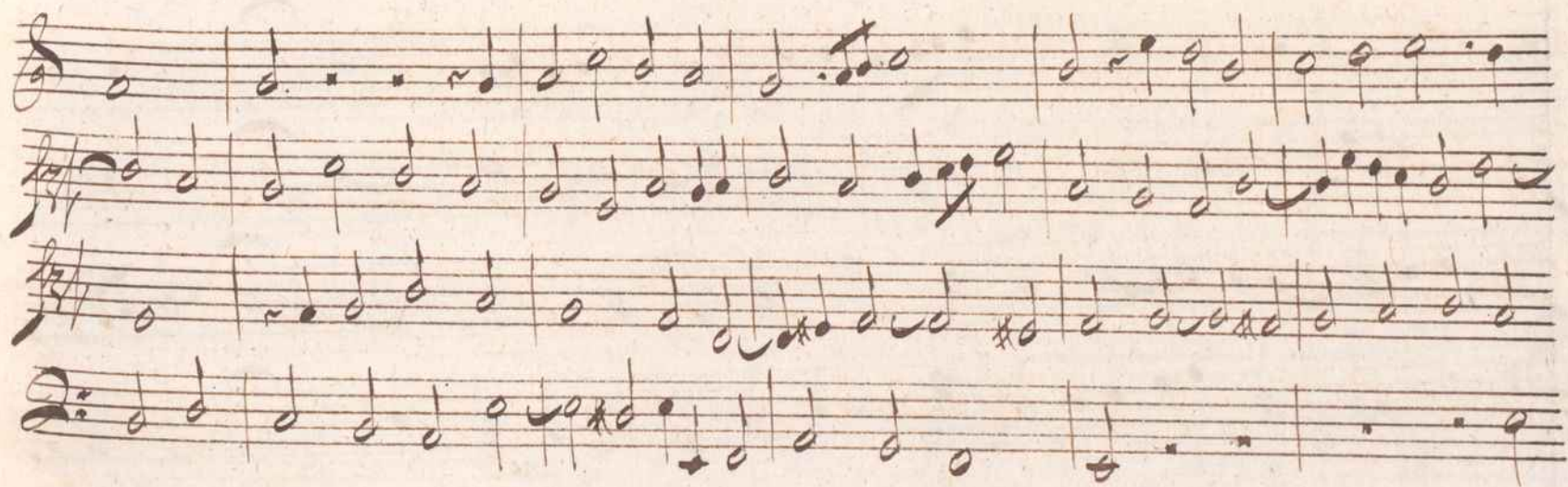
Handwritten musical score on four staves. The notation includes various note values, rests, and clefs. The lyrics "su" are written below the notes on the first three staves. The fourth staff concludes with the word "prio. s." and a double bar line. The score is followed by a large, decorative flourish that spans across the right side of the page. Below the musical notation, there are several empty musical staves.

Five empty musical staves, each consisting of five horizontal lines, arranged vertically in the lower half of the page.

Ricercar *g.*

The first system of the handwritten musical score consists of four staves. The top staff is in treble clef with a common time signature (C). The second staff is in alto clef with a common time signature (C). The third staff is in alto clef with a common time signature (C). The bottom staff is in bass clef with a common time signature (C). The music is written in a cursive hand and includes various note values, rests, and accidentals.

The second system of the handwritten musical score consists of four staves. The top staff is in treble clef with a common time signature (C). The second staff is in alto clef with a common time signature (C). The third staff is in alto clef with a common time signature (C). The bottom staff is in bass clef with a common time signature (C). The music continues from the first system, featuring similar notation and rhythmic patterns.



The first system of the handwritten musical score consists of four staves. The top staff is in treble clef and begins with a series of eighth notes, followed by two whole notes and three measures of whole rests. The second staff is in treble clef and contains a melodic line with eighth and sixteenth notes, including some accidentals. The third staff is in treble clef and features a more active melodic line with eighth and sixteenth notes. The bottom staff is in bass clef and provides a harmonic accompaniment with eighth and sixteenth notes.

The second system of the handwritten musical score also consists of four staves. The top staff in treble clef shows a melodic line with some accidentals and a final measure with a fermata. The second staff in treble clef continues the melodic development with various note values and accidentals. The third staff in treble clef maintains the active melodic texture. The bottom staff in bass clef continues the accompaniment, showing a steady rhythmic pattern.

The first system of the handwritten musical score consists of four staves. The top staff is in treble clef and contains a series of whole notes. The second staff is in treble clef and features a melodic line with eighth and sixteenth notes, including some slurs and accidentals. The third staff is in treble clef and contains a rhythmic accompaniment of eighth and sixteenth notes. The bottom staff is in bass clef and provides a harmonic foundation with whole and half notes.

The second system of the handwritten musical score also consists of four staves. The top staff is in treble clef and continues the melodic line with various note values and slurs. The second staff is in treble clef and continues the rhythmic accompaniment. The third staff is in treble clef and continues the harmonic accompaniment. The bottom staff is in bass clef and continues the harmonic accompaniment.

The first system of the handwritten musical score consists of four staves. The top staff is in treble clef and contains a melodic line with various note values, including quarter, eighth, and sixteenth notes, as well as rests. The second staff is in treble clef and contains a bass line with similar note values. The third staff is in treble clef and contains a more complex melodic line with many sixteenth notes. The bottom staff is in bass clef and contains a bass line with quarter and eighth notes. The system concludes with a double bar line.

The second system of the handwritten musical score also consists of four staves. The top staff is in treble clef and contains a melodic line with quarter and eighth notes. The second staff is in treble clef and contains a bass line with quarter and eighth notes. The third staff is in treble clef and contains a melodic line with quarter and eighth notes, including some accidentals. The bottom staff is in bass clef and contains a bass line with quarter and eighth notes. The system concludes with a double bar line.

Handwritten musical notation on four staves. The notation includes various note values, rests, and clefs. The first staff begins with a treble clef, the second with an alto clef, the third with a soprano clef, and the fourth with a bass clef. The music is written in a single system across these four staves.

Handwritten musical notation on four staves. The notation includes various note values, rests, and clefs. The first staff begins with a treble clef, the second with an alto clef, the third with a soprano clef, and the fourth with a bass clef. The music is written in a single system across these four staves. The lyrics "su" are written below the notes on the first three staves, and "su" and "vriance" are written below the notes on the fourth staff. A large, dark scribble is present on the right side of the page, overlapping the end of the musical notation.

Ricercar + s.

This page contains a handwritten musical score for a piece titled "Ricercar + s.". The score is written on four staves. The first three staves use treble clefs and a common time signature (C). The fourth staff uses a bass clef and a common time signature (C). The notation includes various note values, rests, and bar lines. The first system shows the beginning of the piece, with the first staff containing a melodic line and the other three staves providing accompaniment. The second system continues the piece, with the first staff showing a more complex melodic line. The third system shows the piece continuing with similar notation. The fourth system shows the piece ending with a double bar line. The handwriting is in a historical style, likely from the 16th or 17th century.

The first system of handwritten musical notation consists of four staves. The top two staves are in treble clef with a key signature of one flat (B-flat). The bottom two staves are in bass clef with a key signature of one flat (B-flat). The notation includes various note values such as quarter, eighth, and sixteenth notes, as well as rests and slurs. The music is written in a clear, cursive hand.

The second system of handwritten musical notation also consists of four staves, continuing the piece from the first system. It features similar notation with treble and bass clefs and a one-flat key signature. The notation includes complex rhythmic patterns and melodic lines, with some notes beamed together and others marked with slurs. The handwriting remains consistent with the first system.

Handwritten musical notation on four staves. The notation includes various note values (quarter, eighth, and sixteenth notes), rests, and accidentals (sharps and naturals). The first staff begins with a treble clef and a key signature of one flat. The music is written in a cursive, historical style.

Handwritten musical notation on four staves, continuing the piece from the first system. It features similar note values and accidentals, with some slurs and phrasing marks. The notation is consistent with the first system, showing a continuation of the musical ideas.

The first system of the handwritten musical score consists of four staves. The top staff is in treble clef with a key signature of one flat (B-flat). It begins with a half note G4, followed by quarter notes A4, B4, and C5, then a half note D5. This is followed by a series of eighth notes: E5, F5, G5, A5, B5, C6, D6, E6, F6, G6, A6, B6, C7, D7, E7, F7, G7, A7, B7, C8, D8, E8, F8, G8, A8, B8, C9, D9, E9, F9, G9, A9, B9, C10, D10, E10, F10, G10, A10, B10, C11, D11, E11, F11, G11, A11, B11, C12, D12, E12, F12, G12, A12, B12, C13, D13, E13, F13, G13, A13, B13, C14, D14, E14, F14, G14, A14, B14, C15, D15, E15, F15, G15, A15, B15, C16, D16, E16, F16, G16, A16, B16, C17, D17, E17, F17, G17, A17, B17, C18, D18, E18, F18, G18, A18, B18, C19, D19, E19, F19, G19, A19, B19, C20, D20, E20, F20, G20, A20, B20, C21, D21, E21, F21, G21, A21, B21, C22, D22, E22, F22, G22, A22, B22, C23, D23, E23, F23, G23, A23, B23, C24, D24, E24, F24, G24, A24, B24, C25, D25, E25, F25, G25, A25, B25, C26, D26, E26, F26, G26, A26, B26, C27, D27, E27, F27, G27, A27, B27, C28, D28, E28, F28, G28, A28, B28, C29, D29, E29, F29, G29, A29, B29, C30, D30, E30, F30, G30, A30, B30, C31, D31, E31, F31, G31, A31, B31, C32, D32, E32, F32, G32, A32, B32, C33, D33, E33, F33, G33, A33, B33, C34, D34, E34, F34, G34, A34, B34, C35, D35, E35, F35, G35, A35, B35, C36, D36, E36, F36, G36, A36, B36, C37, D37, E37, F37, G37, A37, B37, C38, D38, E38, F38, G38, A38, B38, C39, D39, E39, F39, G39, A39, B39, C40, D40, E40, F40, G40, A40, B40, C41, D41, E41, F41, G41, A41, B41, C42, D42, E42, F42, G42, A42, B42, C43, D43, E43, F43, G43, A43, B43, C44, D44, E44, F44, G44, A44, B44, C45, D45, E45, F45, G45, A45, B45, C46, D46, E46, F46, G46, A46, B46, C47, D47, E47, F47, G47, A47, B47, C48, D48, E48, F48, G48, A48, B48, C49, D49, E49, F49, G49, A49, B49, C50, D50, E50, F50, G50, A50, B50, C51, D51, E51, F51, G51, A51, B51, C52, D52, E52, F52, G52, A52, B52, C53, D53, E53, F53, G53, A53, B53, C54, D54, E54, F54, G54, A54, B54, C55, D55, E55, F55, G55, A55, B55, C56, D56, E56, F56, G56, A56, B56, C57, D57, E57, F57, G57, A57, B57, C58, D58, E58, F58, G58, A58, B58, C59, D59, E59, F59, G59, A59, B59, C60, D60, E60, F60, G60, A60, B60, C61, D61, E61, F61, G61, A61, B61, C62, D62, E62, F62, G62, A62, B62, C63, D63, E63, F63, G63, A63, B63, C64, D64, E64, F64, G64, A64, B64, C65, D65, E65, F65, G65, A65, B65, C66, D66, E66, F66, G66, A66, B66, C67, D67, E67, F67, G67, A67, B67, C68, D68, E68, F68, G68, A68, B68, C69, D69, E69, F69, G69, A69, B69, C70, D70, E70, F70, G70, A70, B70, C71, D71, E71, F71, G71, A71, B71, C72, D72, E72, F72, G72, A72, B72, C73, D73, E73, F73, G73, A73, B73, C74, D74, E74, F74, G74, A74, B74, C75, D75, E75, F75, G75, A75, B75, C76, D76, E76, F76, G76, A76, B76, C77, D77, E77, F77, G77, A77, B77, C78, D78, E78, F78, G78, A78, B78, C79, D79, E79, F79, G79, A79, B79, C80, D80, E80, F80, G80, A80, B80, C81, D81, E81, F81, G81, A81, B81, C82, D82, E82, F82, G82, A82, B82, C83, D83, E83, F83, G83, A83, B83, C84, D84, E84, F84, G84, A84, B84, C85, D85, E85, F85, G85, A85, B85, C86, D86, E86, F86, G86, A86, B86, C87, D87, E87, F87, G87, A87, B87, C88, D88, E88, F88, G88, A88, B88, C89, D89, E89, F89, G89, A89, B89, C90, D90, E90, F90, G90, A90, B90, C91, D91, E91, F91, G91, A91, B91, C92, D92, E92, F92, G92, A92, B92, C93, D93, E93, F93, G93, A93, B93, C94, D94, E94, F94, G94, A94, B94, C95, D95, E95, F95, G95, A95, B95, C96, D96, E96, F96, G96, A96, B96, C97, D97, E97, F97, G97, A97, B97, C98, D98, E98, F98, G98, A98, B98, C99, D99, E99, F99, G99, A99, B99, C100, D100, E100, F100, G100, A100, B100, C101, D101, E101, F101, G101, A101, B101, C102, D102, E102, F102, G102, A102, B102, C103, D103, E103, F103, G103, A103, B103, C104, D104, E104, F104, G104, A104, B104, C105, D105, E105, F105, G105, A105, B105, C106, D106, E106, F106, G106, A106, B106, C107, D107, E107, F107, G107, A107, B107, C108, D108, E108, F108, G108, A108, B108, C109, D109, E109, F109, G109, A109, B109, C110, D110, E110, F110, G110, A110, B110, C111, D111, E111, F111, G111, A111, B111, C112, D112, E112, F112, G112, A112, B112, C113, D113, E113, F113, G113, A113, B113, C114, D114, E114, F114, G114, A114, B114, C115, D115, E115, F115, G115, A115, B115, C116, D116, E116, F116, G116, A116, B116, C117, D117, E117, F117, G117, A117, B117, C118, D118, E118, F118, G118, A118, B118, C119, D119, E119, F119, G119, A119, B119, C120, D120, E120, F120, G120, A120, B120, C121, D121, E121, F121, G121, A121, B121, C122, D122, E122, F122, G122, A122, B122, C123, D123, E123, F123, G123, A123, B123, C124, D124, E124, F124, G124, A124, B124, C125, D125, E125, F125, G125, A125, B125, C126, D126, E126, F126, G126, A126, B126, C127, D127, E127, F127, G127, A127, B127, C128, D128, E128, F128, G128, A128, B128, C129, D129, E129, F129, G129, A129, B129, C130, D130, E130, F130, G130, A130, B130, C131, D131, E131, F131, G131, A131, B131, C132, D132, E132, F132, G132, A132, B132, C133, D133, E133, F133, G133, A133, B133, C134, D134, E134, F134, G134, A134, B134, C135, D135, E135, F135, G135, A135, B135, C136, D136, E136, F136, G136, A136, B136, C137, D137, E137, F137, G137, A137, B137, C138, D138, E138, F138, G138, A138, B138, C139, D139, E139, F139, G139, A139, B139, C140, D140, E140, F140, G140, A140, B140, C141, D141, E141, F141, G141, A141, B141, C142, D142, E142, F142, G142, A142, B142, C143, D143, E143, F143, G143, A143, B143, C144, D144, E144, F144, G144, A144, B144, C145, D145, E145, F145, G145, A145, B145, C146, D146, E146, F146, G146, A146, B146, C147, D147, E147, F147, G147, A147, B147, C148, D148, E148, F148, G148, A148, B148, C149, D149, E149, F149, G149, A149, B149, C150, D150, E150, F150, G150, A150, B150, C151, D151, E151, F151, G151, A151, B151, C152, D152, E152, F152, G152, A152, B152, C153, D153, E153, F153, G153, A153, B153, C154, D154, E154, F154, G154, A154, B154, C155, D155, E155, F155, G155, A155, B155, C156, D156, E156, F156, G156, A156, B156, C157, D157, E157, F157, G157, A157, B157, C158, D158, E158, F158, G158, A158, B158, C159, D159, E159, F159, G159, A159, B159, C160, D160, E160, F160, G160, A160, B160, C161, D161, E161, F161, G161, A161, B161, C162, D162, E162, F162, G162, A162, B162, C163, D163, E163, F163, G163, A163, B163, C164, D164, E164, F164, G164, A164, B164, C165, D165, E165, F165, G165, A165, B165, C166, D166, E166, F166, G166, A166, B166, C167, D167, E167, F167, G167, A167, B167, C168, D168, E168, F168, G168, A168, B168, C169, D169, E169, F169, G169, A169, B169, C170, D170, E170, F170, G170, A170, B170, C171, D171, E171, F171, G171, A171, B171, C172, D172, E172, F172, G172, A172, B172, C173, D173, E173, F173, G173, A173, B173, C174, D174, E174, F174, G174, A174, B174, C175, D175, E175, F175, G175, A175, B175, C176, D176, E176, F176, G176, A176, B176, C177, D177, E177, F177, G177, A177, B177, C178, D178, E178, F178, G178, A178, B178, C179, D179, E179, F179, G179, A179, B179, C180, D180, E180, F180, G180, A180, B180, C181, D181, E181, F181, G181, A181, B181, C182, D182, E182, F182, G182, A182, B182, C183, D183, E183, F183, G183, A183, B183, C184, D184, E184, F184, G184, A184, B184, C185, D185, E185, F185, G185, A185, B185, C186, D186, E186, F186, G186, A186, B186, C187, D187, E187, F187, G187, A187, B187, C188, D188, E188, F188, G188, A188, B188, C189, D189, E189, F189, G189, A189, B189, C190, D190, E190, F190, G190, A190, B190, C191, D191, E191, F191, G191, A191, B191, C192, D192, E192, F192, G192, A192, B192, C193, D193, E193, F193, G193, A193, B193, C194, D194, E194, F194, G194, A194, B194, C195, D195, E195, F195, G195, A195, B195, C196, D196, E196, F196, G196, A196, B196, C197, D197, E197, F197, G197, A197, B197, C198, D198, E198, F198, G198, A198, B198, C199, D199, E199, F199, G199, A199, B199, C200, D200, E200, F200, G200, A200, B200, C201, D201, E201, F201, G201, A201, B201, C202, D202, E202, F202, G202, A202, B202, C203, D203, E203, F203, G203, A203, B203, C204, D204, E204, F204, G204, A204, B204, C205, D205, E205, F205, G205, A205, B205, C206, D206, E206, F206, G206, A206, B206, C207, D207, E207, F207, G207, A207, B207, C208, D208, E208, F208, G208, A208, B208, C209, D209, E209, F209, G209, A209, B209, C210, D210, E210, F210, G210, A210, B210, C211, D211, E211, F211, G211, A211, B211, C212, D212, E212, F212, G212, A212, B212, C213, D213, E213, F213, G213, A213, B213, C214, D214, E214, F214, G214, A214, B214, C215, D215, E215, F215, G215, A215, B215, C216, D216, E216, F216, G216, A216, B216, C217, D217, E217, F217, G217, A217, B217, C218, D218, E218, F218, G218, A218, B218, C219, D219, E219, F219, G219, A219, B219, C220, D220, E220, F220, G220, A220, B220, C221, D221, E221, F221, G221, A221, B221, C222, D222, E222, F222, G222, A222, B222, C223, D223, E223, F223, G223, A223, B223, C224, D224, E224, F224, G224, A224, B224, C225, D225, E225, F225, G225, A225, B225, C226, D226, E226, F226, G226, A226, B226, C227, D227, E227, F227, G227, A227, B227, C228, D228, E228, F228, G228, A228, B228, C229, D229, E229, F229, G229, A229, B229, C230, D230, E230, F230, G230, A230, B230, C231, D231, E231, F231, G231, A231, B231, C232, D232, E232, F232, G232, A232, B232, C233, D233, E233, F233, G233, A233, B233, C234, D234, E234, F234, G234, A234, B234, C235, D235, E235, F235, G235, A235, B235, C236, D236, E236, F236, G236, A236, B236, C237, D237, E237, F237, G237, A237, B237, C238, D238, E238, F238, G238, A238, B238, C239, D239, E239, F239, G239, A239, B239, C240, D240, E240, F240, G240, A240, B240, C241, D241, E241, F241, G241, A241, B241, C242, D242, E242, F242, G242, A242, B242, C243, D243, E243, F243, G243, A243, B243, C244, D244, E244, F244, G244, A244, B244, C245, D245, E245, F245, G245, A245, B245, C246, D246, E246, F246, G246, A246, B246, C247, D247, E247, F247, G247, A247, B247, C248, D248, E248, F248, G248, A248, B248, C249, D249, E249, F249, G249, A249, B249, C250, D250, E250, F250, G250, A250, B250, C251, D251, E251, F251, G251, A251, B251, C252, D252, E252, F252, G252, A252, B252, C253, D253, E253, F253, G253, A253, B253, C254, D254, E254, F254, G254, A254, B254, C255, D255, E255, F255, G255, A255, B255, C256, D256, E256, F256, G256, A256, B256, C257, D257, E257, F257, G257, A257, B257, C258, D258, E258, F258, G258, A258, B258, C259, D259, E259, F259, G259, A259, B259, C260, D260, E260, F260, G260, A260, B260, C261, D261, E261, F261, G261, A261, B261, C262, D262, E262, F262, G262, A262, B262, C263, D263, E263, F263, G263, A263, B263, C264, D264, E264, F264, G264, A264, B264, C265, D265, E265, F265, G265, A265, B265, C266, D266, E266, F266, G266, A266, B266, C267, D267, E267, F267, G267, A267, B267, C268, D268, E268, F268, G268, A268, B268, C269, D269, E269, F269, G269, A269, B269, C270, D270, E270, F270, G270, A270, B270, C271, D271, E271, F271, G271, A271, B271, C272, D272, E272, F272, G272, A272, B272, C273, D273, E273, F273, G273, A273, B273, C274, D274, E274, F274, G274, A274, B274, C275, D275, E275, F275, G275, A275, B275, C276, D276, E276, F276, G276, A276, B276, C277, D277, E277, F277, G277, A277, B277, C278, D278, E278, F278, G278, A278, B278, C279, D279, E279, F279, G279, A279, B279, C280, D280, E280, F280, G280, A280, B280, C281, D281, E281, F281, G281, A281, B281, C282, D282, E282, F282, G282, A282, B282, C283, D283, E283, F283, G283, A283, B283, C284, D284, E284, F284, G284, A284, B284, C285, D285, E285, F285, G285, A285, B285, C286, D286, E286, F286, G286, A286, B286, C287, D287, E287, F287, G287, A287, B287, C288, D288, E288, F288, G288, A288, B288, C289, D289, E289, F289, G289, A289, B289, C290, D290, E290, F290, G290, A290, B290, C291, D291, E291, F291, G291, A291, B291, C292, D292, E292, F292, G292, A292, B292, C293, D293, E293, F293, G293, A293, B293, C294, D294, E294, F294, G294, A294, B294, C295, D295, E295, F295, G295, A295, B295, C296, D296, E296, F296, G296, A296, B296, C297, D297, E297, F297, G297, A297, B297, C298, D298, E298, F298, G298, A298, B298, C299, D299, E299, F299, G299, A299, B299, C300, D300, E300, F300, G300, A300, B300, C301, D301, E301, F301, G301, A301, B301, C302, D302, E302, F302, G302, A302, B302, C303, D303, E303, F303, G303, A303, B303, C304, D304, E304, F304, G304, A304, B304, C305, D305, E305, F305, G305, A305, B305, C306, D306, E306, F306, G306, A306, B306, C307, D307, E307, F307, G307, A307, B307, C308, D308, E308, F308, G308, A308, B308, C309, D309, E309, F309, G309, A309, B309, C310, D310, E310, F310, G310, A310, B310, C311, D311, E311, F311, G311, A311, B311, C312, D312, E312, F312, G312, A312, B312, C313, D313, E313, F313, G313, A313, B313, C314, D314, E314, F314, G314, A314, B314, C315, D315, E315, F315, G315, A315, B315, C316, D316, E316, F316, G316, A316, B316, C317, D317, E317, F317, G317, A317, B317, C318, D318, E318, F318, G318, A318, B318, C319, D319, E319, F319, G319, A319, B319, C320, D320, E320, F320, G320, A320, B320, C321, D321, E321, F321, G321, A321, B321, C322, D322, E322, F322, G322, A322, B322, C323, D323, E323, F323, G323, A323, B323, C324, D324, E324, F324, G324, A324, B324, C325, D325, E325, F325, G325, A325, B325, C326, D326, E326, F326, G326, A326, B326, C327, D327, E327, F327, G327, A327, B327, C328, D328, E328, F328, G328, A328, B328, C329, D329, E329, F329, G329, A329, B329, C330, D330, E330, F330, G330, A330, B330, C331, D331, E331, F331, G331, A331, B331, C332, D332, E332, F332, G332, A332, B332, C333, D333, E333, F333, G333, A333, B333, C334, D334, E334, F334, G334, A334, B334, C335, D335, E335, F335, G335, A335, B335, C336, D336, E336, F336, G336, A336, B336, C337, D337, E337, F337, G337, A337, B337, C338, D338, E338, F338, G338, A338, B338, C339, D339, E339, F339, G339, A339, B339, C340, D340, E340, F340, G340, A340, B340, C341, D341, E341, F341, G341, A341, B341, C342, D342, E342, F342, G342, A342, B342, C343, D343, E343, F343, G343, A343, B343, C344, D344, E344, F344, G344, A344, B344, C345, D345, E345, F345, G345, A345, B345, C346, D346, E346, F346, G346, A346, B346, C347, D347, E347, F347, G347, A347, B347, C348, D348, E348, F348, G348, A348, B348, C349, D349, E349, F349, G349, A349, B349, C350, D350, E350, F350, G350, A350, B350, C351, D351, E351, F351, G351, A351, B351, C352, D352, E352, F352, G352, A352, B352, C353, D353, E353, F353, G353, A353, B353, C354, D354, E354, F354, G354, A354, B354, C355, D355, E355, F355, G355, A355, B355, C356, D356, E356, F356, G356, A356, B356, C357, D357, E357, F357, G357, A357, B357, C358, D358, E358, F358, G358, A358, B358, C359, D359, E359, F359, G359, A359, B359, C360, D360, E360, F360, G360, A360, B360, C361, D361, E361, F361, G361, A361, B361, C362, D362, E362, F362, G362, A362, B362, C363, D363, E363, F363, G363, A363, B363, C364, D364, E364, F364, G364, A364, B364, C365, D365, E365, F365, G365, A365, B365, C366, D366, E366, F366, G366, A366, B366, C367, D367, E367, F367, G367, A367, B367, C368, D368, E368, F368, G368, A368, B368, C369, D369, E369, F369, G369, A369, B369, C370, D370, E370, F370, G370, A370, B370, C371, D371, E371, F371, G371, A371, B371, C372, D372, E372, F372, G372, A372, B372, C373, D373, E373, F373, G373, A373, B373, C374, D37

The first system of the handwritten musical score consists of four staves. The top two staves are in treble clef, and the bottom two are in bass clef. The key signature is one flat (B-flat), and the time signature is common time (C). The notation includes various note values such as quarter, eighth, and sixteenth notes, as well as rests and accidentals. The music is written in a clear, cursive hand.

The second system of the handwritten musical score also consists of four staves, with the same clef and key signature arrangement as the first system. The notation continues with similar note values and rests, maintaining the cursive handwriting style. The system concludes with a double bar line.

The first system of the handwritten musical score consists of four staves. The top staff is a vocal line with a treble clef and a key signature of one flat (B-flat), containing several whole notes and rests. The second and third staves are for a keyboard instrument, with a treble clef and a key signature of one flat, featuring a more active melodic line with eighth and sixteenth notes. The bottom staff is the bass line, also with a treble clef and a key signature of one flat, primarily consisting of whole notes and rests.

The second system of the handwritten musical score continues the piece with four staves. The top staff (vocal line) has a treble clef and a key signature of one flat, showing a melodic line with some grace notes. The second and third staves (keyboard part) have a treble clef and a key signature of one flat, with the right hand playing a more active melody and the left hand providing harmonic support with longer notes. The bottom staff (bass line) has a treble clef and a key signature of one flat, continuing the harmonic foundation with whole notes and rests.

The first system of the handwritten musical score consists of four staves. The top three staves are in treble clef with a key signature of one flat (B-flat). The bottom staff is in bass clef with a key signature of one flat. The notation includes various rhythmic values such as eighth, sixteenth, and quarter notes, along with rests and slurs. The music appears to be a single melodic line with accompaniment.

The second system of the handwritten musical score also consists of four staves, following the same clef and key signature as the first system. The notation is more complex, featuring many sixteenth and thirty-second notes, often beamed together. The system concludes with a double bar line and a decorative flourish on the right side of the bottom staff.

Ricercar. 5.

The first system of handwritten musical notation consists of four staves. The top two staves are treble clefs, and the bottom two are bass clefs. Each staff begins with a common time signature 'C'. The notation includes various note values such as minims, crotchets, and quavers, along with rests and bar lines. There are some handwritten annotations in the left margin of the first two staves.

The second system of handwritten musical notation also consists of four staves, with two treble clefs and two bass clefs. The notation continues with various note values and rests, maintaining the same musical style as the first system. There are handwritten annotations in the left margin of the first two staves.

The first system of the handwritten musical score consists of four staves. The top staff is a treble clef with a key signature of one sharp (F#) and a common time signature (C). It contains a melodic line with quarter and eighth notes, some marked with asterisks. The second staff is a bass clef with a common time signature, containing a line of whole notes. The third staff is a treble clef with a key signature of one sharp and a common time signature, containing a melodic line with quarter and eighth notes, some marked with asterisks. The fourth staff is a bass clef with a key signature of one sharp and a common time signature, containing a melodic line with quarter and eighth notes, some marked with asterisks.

The second system of the handwritten musical score consists of four staves. The top staff is a treble clef with a key signature of one sharp and a common time signature, containing a melodic line with quarter and eighth notes, some marked with asterisks. The second staff is a bass clef with a key signature of one sharp and a common time signature, containing a melodic line with quarter and eighth notes, some marked with asterisks. The third staff is a treble clef with a key signature of one sharp and a common time signature, containing a melodic line with quarter and eighth notes, some marked with asterisks. The fourth staff is a bass clef with a key signature of one sharp and a common time signature, containing a melodic line with quarter and eighth notes, some marked with asterisks.

The first system of the handwritten musical score consists of four staves. The top staff is a vocal line with a treble clef and a key signature of one sharp (F#). It begins with a whole note G4, followed by quarter notes A4, B4, and C5, then a half note D5, and continues with eighth and sixteenth notes. The second staff is a piano accompaniment with a treble clef, featuring a melodic line with slurs and ties. The third staff is a piano accompaniment with a treble clef, showing a bass line with quarter and eighth notes. The fourth staff is a piano accompaniment with a bass clef, containing mostly rests and a few notes.

The second system of the handwritten musical score also consists of four staves. The top staff is a vocal line with a treble clef and a key signature of one sharp (F#). It starts with a whole note G4, followed by quarter notes A4, B4, and C5, then a half note D5, and ends with a series of sixteenth notes. The second staff is a piano accompaniment with a treble clef, featuring a melodic line with slurs and ties. The third staff is a piano accompaniment with a treble clef, showing a bass line with quarter and eighth notes. The fourth staff is a piano accompaniment with a bass clef, containing mostly rests and a few notes.

The first system of the handwritten musical score consists of four staves. The top staff begins with a treble clef and a key signature of one sharp (F#). It contains a series of notes, including a half note, a quarter note, and a half note, followed by a measure with a half note and a quarter note. The second staff starts with a bass clef and contains a half note, a quarter note, and a half note. The third staff begins with a treble clef and contains a half note, a quarter note, and a half note. The fourth staff starts with a bass clef and contains a half note, a quarter note, and a half note. The notation is clear and legible, with some ink bleed-through from the reverse side of the page.

The second system of the handwritten musical score consists of four staves. The top staff begins with a treble clef and a key signature of one sharp (F#). It contains a series of notes, including a half note, a quarter note, and a half note, followed by a measure with a half note and a quarter note. The second staff starts with a bass clef and contains a half note, a quarter note, and a half note. The third staff begins with a treble clef and contains a half note, a quarter note, and a half note. The fourth staff starts with a bass clef and contains a half note, a quarter note, and a half note. The notation is clear and legible, with some ink bleed-through from the reverse side of the page.

The first system of the handwritten musical score consists of four staves. The top staff begins with a treble clef and a key signature of one sharp (F#). It contains a series of notes, including a half note, a quarter note, and a dotted quarter note, with some notes beamed together. The second and third staves also use treble clefs and contain similar rhythmic patterns. The bottom staff uses a bass clef and contains mostly whole and half notes. The notation is clear and legible, with some slurs and ties used to connect notes across measures.

The second system of the handwritten musical score continues the composition with four staves. The notation is consistent with the first system, featuring treble and bass clefs and a key signature of one sharp. The music includes various rhythmic values such as quarter, eighth, and dotted notes, along with rests. There are several slurs and ties throughout the system, indicating phrasing and melodic connections. The handwriting is consistent and professional, typical of a composer's manuscript.

The first system of handwritten musical notation consists of four staves. The top staff is in treble clef and contains a melodic line with eighth and sixteenth notes, some beamed together. The second staff is in treble clef and provides harmonic support with chords and single notes. The third staff is in treble clef and contains a more active melodic line with many sixteenth notes. The bottom staff is in bass clef and features a steady bass line with quarter and eighth notes. Each staff begins with a clef, a key signature (one sharp), and a time signature (3/4).

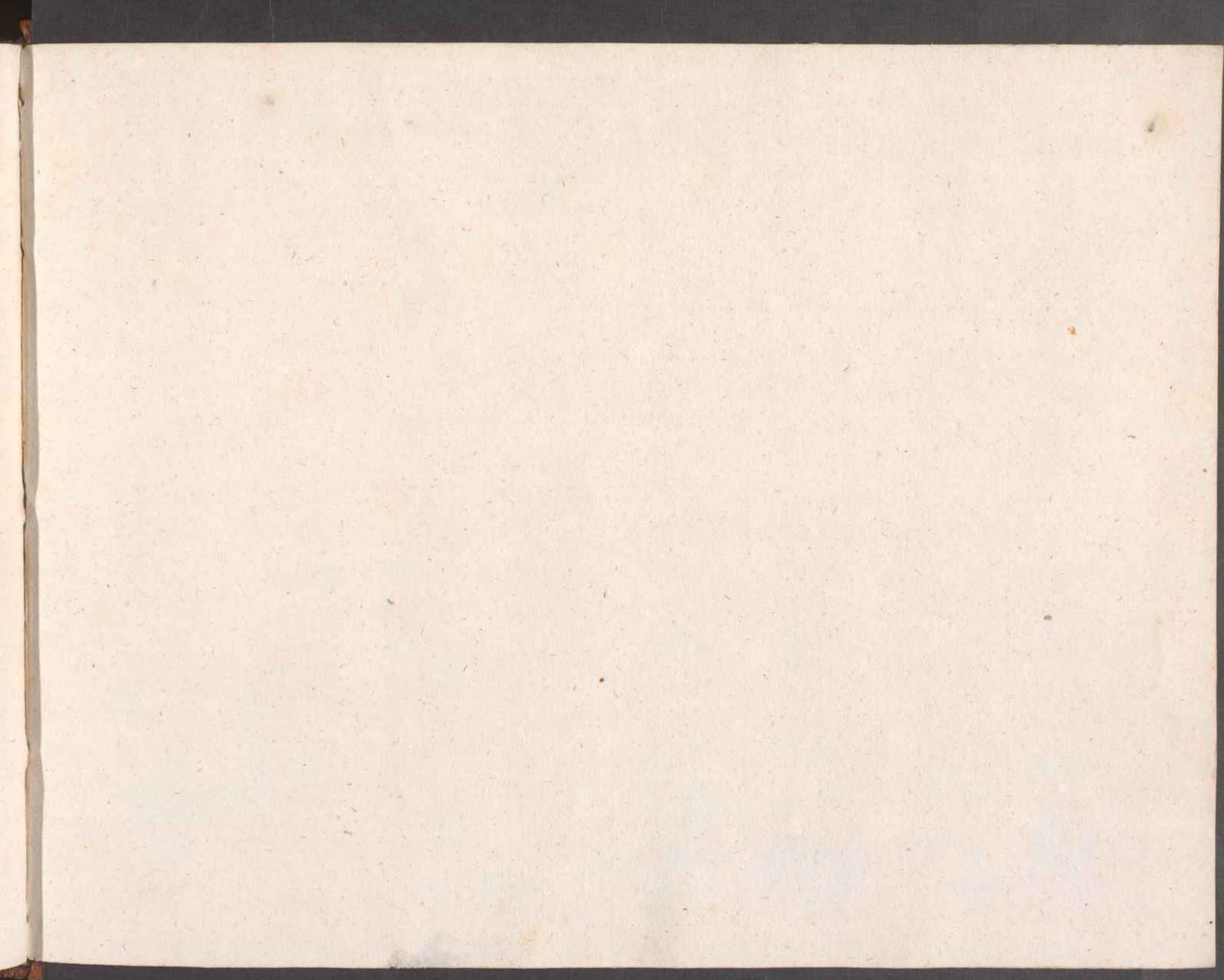
The second system of handwritten musical notation also consists of four staves. The top staff continues the melodic line from the first system. The second staff continues the harmonic accompaniment. The third staff continues the active melodic line. The bottom staff continues the bass line. The notation is consistent with the first system, using various note values and rests to create a rhythmic and melodic texture. Each staff begins with a clef, a key signature, and a time signature.

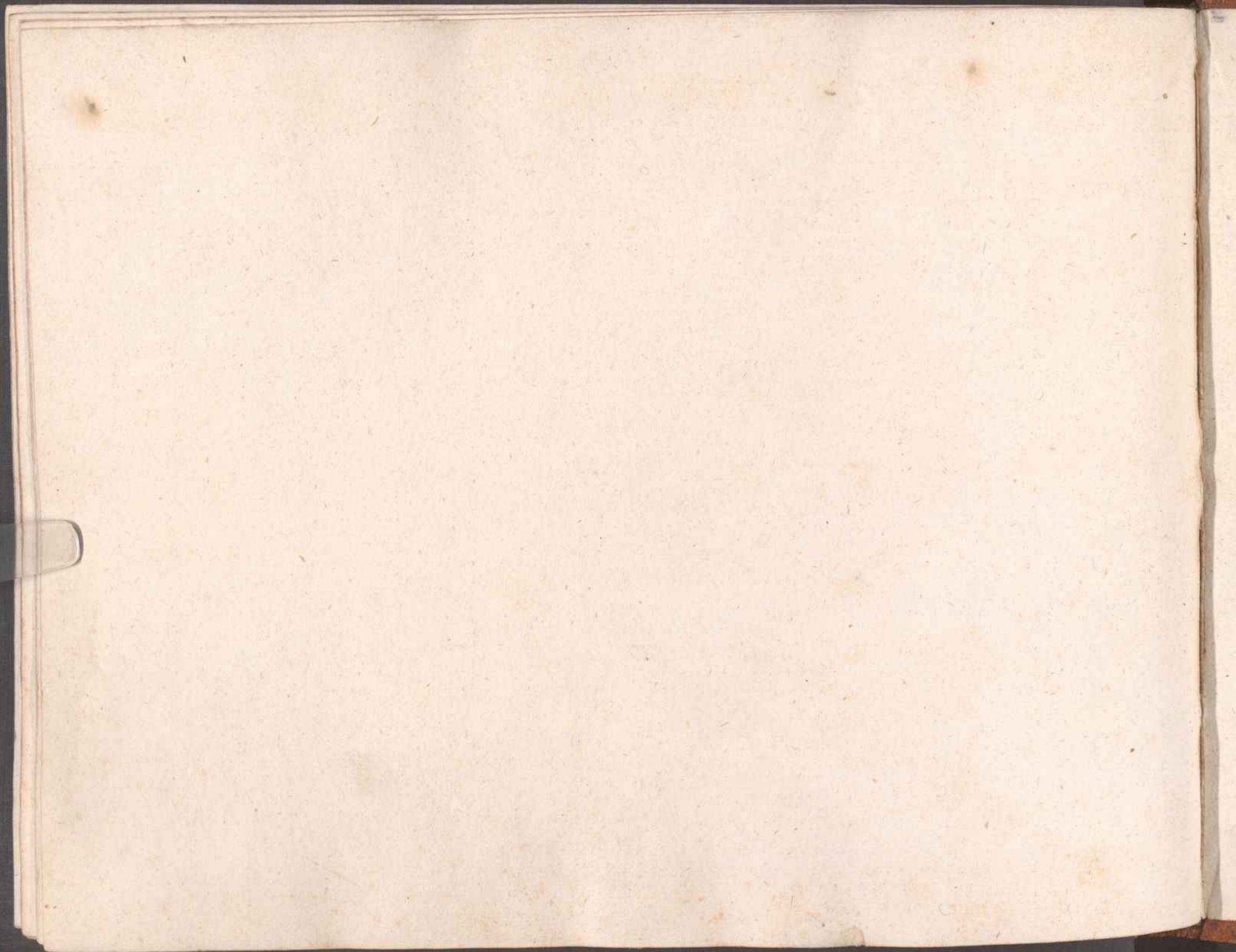
A handwritten musical score consisting of four staves. The top three staves are in treble clef with a key signature of one sharp (F#) and a common time signature (C). The bottom staff is in bass clef with a common time signature (C). The notation includes various note values, rests, and slurs. The paper shows signs of age and wear.

A handwritten musical score on four staves. The notation includes notes, rests, and slurs. A large, dense scribble of ink covers the right side of the page, overlapping the staves. To the left of the scribble, there are handwritten annotations: 'su' on the first staff, 'm' on the second, 'X su' on the third, and 'm' on the fourth. The word 'Pieranga' is written in cursive at the bottom right, partially obscured by the scribble. The paper is aged and shows some staining.



47 folio





ÖNB



+Z146033906

