

CONSORT

1. SUITE d moll

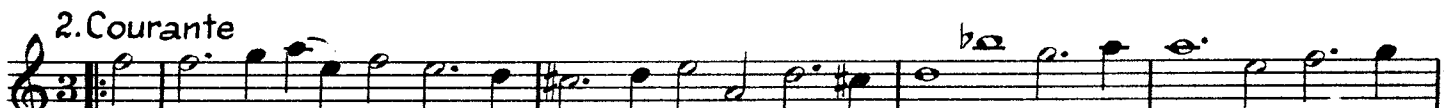
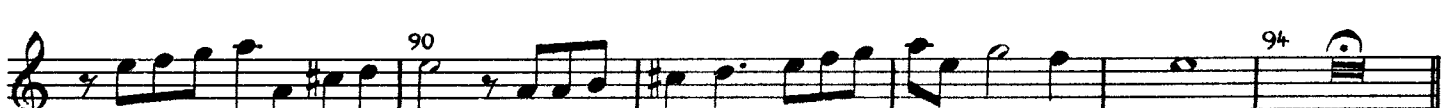
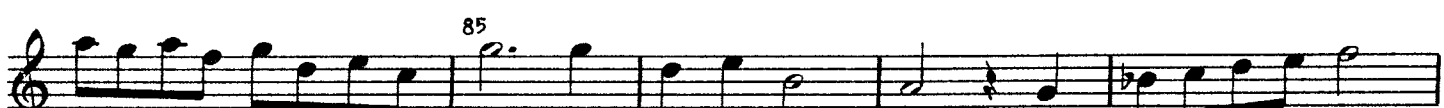
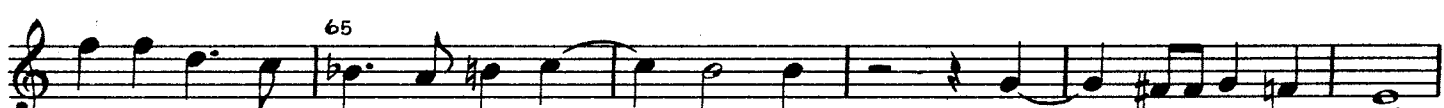
Herausgegeben von
F. J. Giesbert

Math. Locke
(etwa 1610 - 1677)

1. Fantasie

3 5 10 15 20 25 30 35 40 45

Sopran (Violino I)

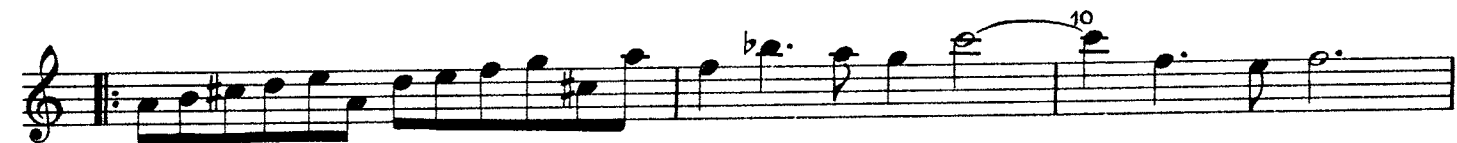




3. Ayre



4. Sarabande



Sopran (Violino I)

2. SUITE D dur

5. Fantasie

5
10
15
20
25
30
35
40
45
50
55
60
65
70
75
80
83

schleppen (dragg)

6. Courante

5

10

15

16

7. Ayre

5

10

15

20

8. Sarabande

5

10

12

zart (soft)

Schluss (in fine)

5

9

3. SUITE F dur

9. Fantasie

Musical score for '9. Fantasie' in F major, Soprano/Violino I part. The score consists of nine staves of music, each with a measure number above it. The key signature is one flat (F major). The time signature is common time (C). The music features a variety of rhythmic patterns, including eighth and sixteenth notes, and rests. The score is written in a single system with a treble clef and a key signature of one flat.

5

10

15

20

25

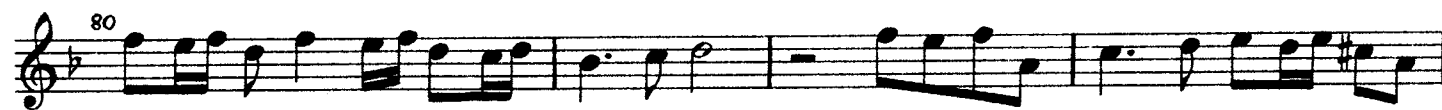
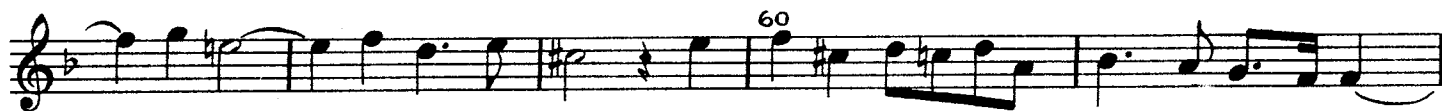
1

30

35

40

Sopran (Violino I)



Sopran (Violino I)

10. Courante

Musical score for '10. Courante' in G minor, 3/4 time. The piece consists of 18 measures. The notation includes a treble clef, a key signature of one flat, and a 3/4 time signature. The score is divided into three systems of six measures each. Measure numbers 1, 5, 10, 15, and 18 are indicated above the staff. The piece concludes with a double bar line and repeat dots.

11. Ayre

Musical score for '11. Ayre' in G minor, 3/4 time. The piece consists of 18 measures. The notation includes a treble clef, a key signature of one flat, and a 3/4 time signature. The score is divided into three systems of six measures each. Measure numbers 1, 5, 10, and 18 are indicated above the staff. The piece concludes with a double bar line and repeat dots.

12. Sarabande

Musical score for '12. Sarabande' in G minor, 3/4 time. The piece consists of 12 measures. The notation includes a treble clef, a key signature of one flat, and a 3/4 time signature. The score is divided into three systems of four measures each. Measure numbers 5, 10, and 12 are indicated above the staff. The piece concludes with a double bar line and repeat dots.