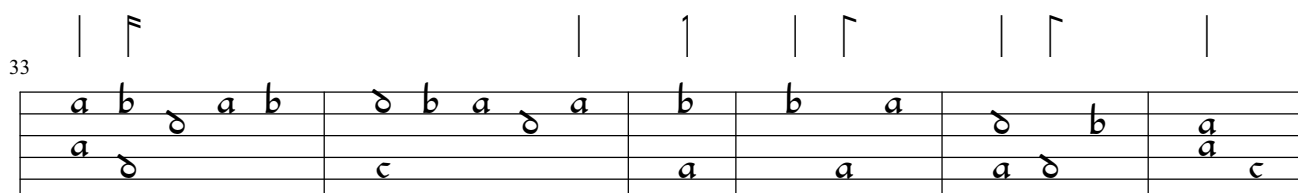
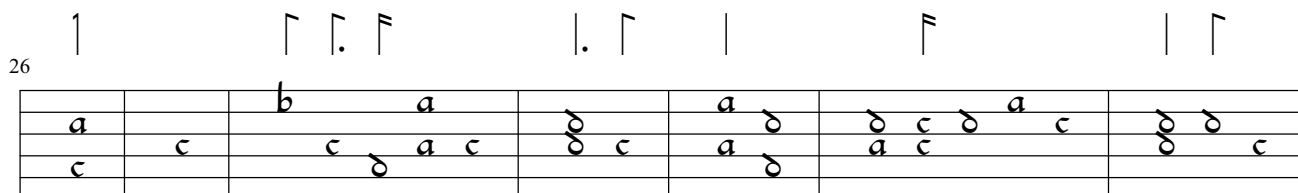
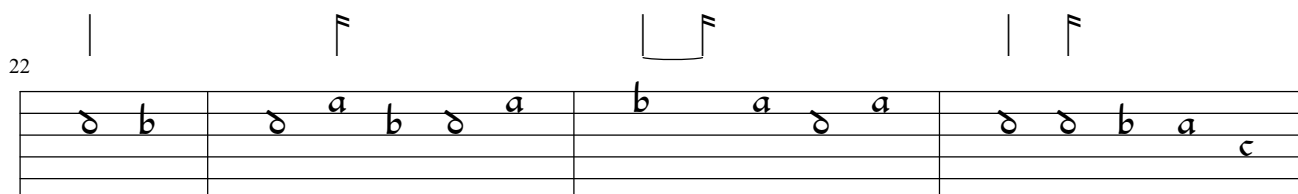
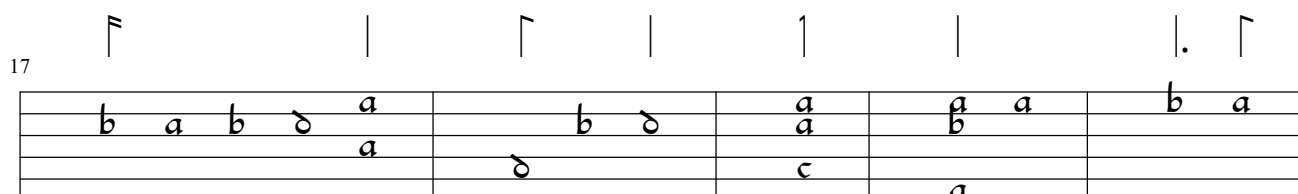
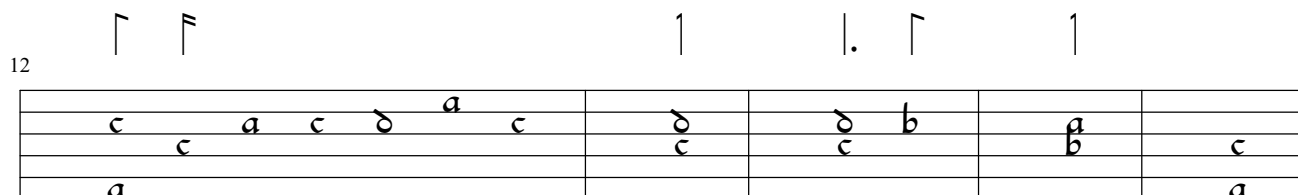
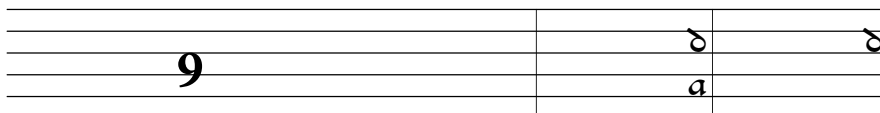


# Ardente mei suspiri

Philippe Verdelot glosada : **Antonio de Cabezón**

Intavolierung - Anton Höger

1



44

a	a	δ	b	a	c	a	c	a	b	a	a	δ	b	a	δ	b	δ	a	a			
																		δ	a	c	δ	c

49

a	a	a	a	δ	a	c	a	c	δ	b	a	b	a	b	c
b	a			c					a	c	δ				
a	a	c													

55

a	c	a	b	δ	b	a	c	a	c	a	b	δ	a	b	δ	a	c	a	c	δ	b	a	b	c

61

	a	c	a	b	δ	a	δ	b	a	c	a	c	a	b	a	b	c	a
	b																	
c	a																	

66

c	a	δ	c	a	c	δ	a	δ	c	δ	a	c	b	a	c	b	c	a	c	c	b	e	c	b	c	b	e	b
a	a																											

71

		b	a	c	a	c	b	a	a	δ	a	c	a	a	δ
c	c														
a	a														

77

a	a	a	a	a	a
δ	c	δ	a	c	δ

81

a	b	a	b	δ	b	δ	a

86

b	a	δ	b	b	b	a	δ	b	a	δ	b	δ	a	b	a	a	δ	a	δ	b	δ	b	c	a	a
a			δ	a	a																				

91

b	δ	b	a	c	a	a	c	c	a	δ	a	δ	a

99

δ	δ	b	a	δ	b	a	c	a	b	a	b	b	a

104

δ	δ	a	δ	a	δ	a	c	δ	a	δ	a	δ	c	a	a	a	c	δ	c

110

δ	a	c	δ	a	c	δ	a	c	a	c	δ	a	a	c	δ	a	b

116

a	b	δ	a	a	b	a
c	a			c		
a						

123

δ	a	b	a	δ	b	δ	c	δ	δ	c	δ	b	a	c	a	δ	c	a	c	δ	b	c	b	c	b	e	b	c	a	b	δ	b	a	c	a

129

c	a	δ	c	a	b	a

[illegible]

138

1                  7 7 7                  6 7 |                  7

a						
	c					d d c
		a c d a c	d c	a d	a c	

[illegible]

151

		a	a	b a b a b d
c a c d a	d c	c a		c a b a b d
d a c d a	d c	d a	c	a

[illegible]

161

A musical score for a three-part setting of 'The Rose Tree'. The score is written on three staves. The first staff has a treble clef and a key signature of one flat (B-flat). The second and third staves have bass clefs. The music is in common time (C). The first staff contains the melody, with lyrics 'a d' c a' written below it. The second and third staves provide harmonic support, with lyrics 'a a' and 'a a' written below them. The score ends with a double bar line and a fermata.