

Fagott

Georg Philipp Telemann

# Ouverturen-Suite

TWV 55:a1

Bearbeitet für Doppelrohrquartett

# Fagott

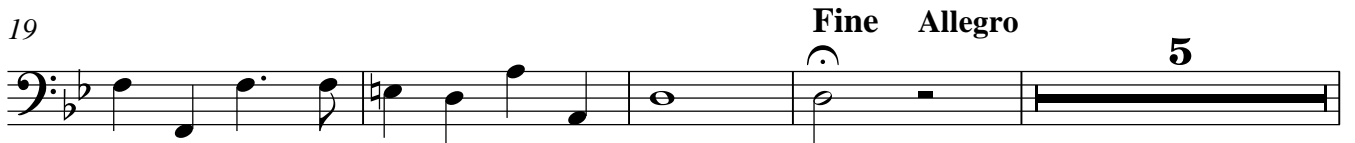
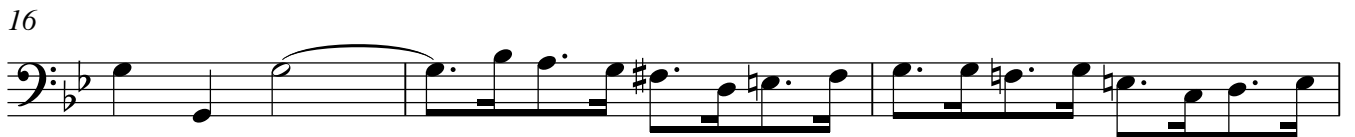
## Ouverturen-Suite

TWV 55:a1

Transponiert nach g-Moll

G.Ph. Telemann

**Lento**



47



53



58



63



68



73



78



83



88



93



97



D.C. al Fine

Fagott

4

Rondo Allegro



Fine

11



21



30



40



50



58



D.C. al Fine

Gavotte



6



11



16



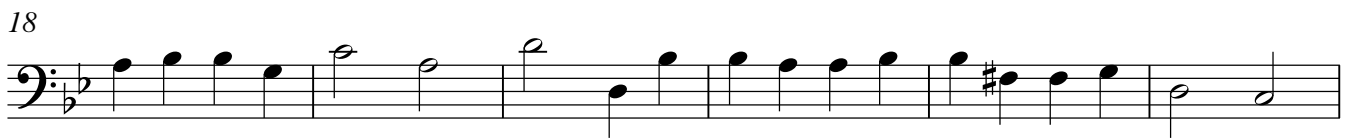
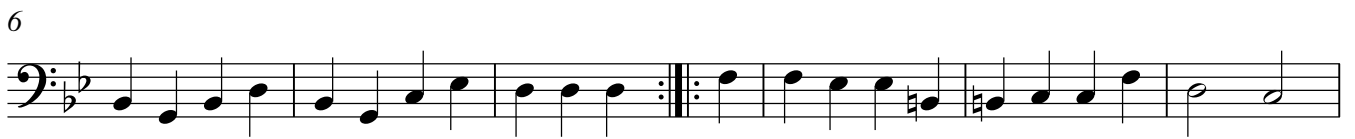
20



**Courante**



**Rigaudon**



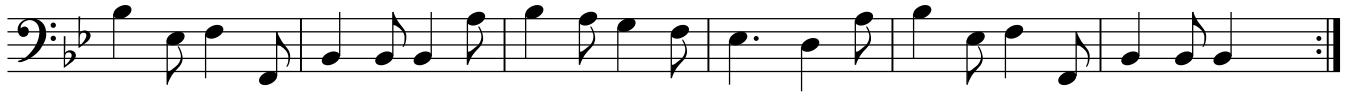
Forlane



7



13



19



25



30



36



40



Menuett 1



7



15



Menuett 2

21



28



35

