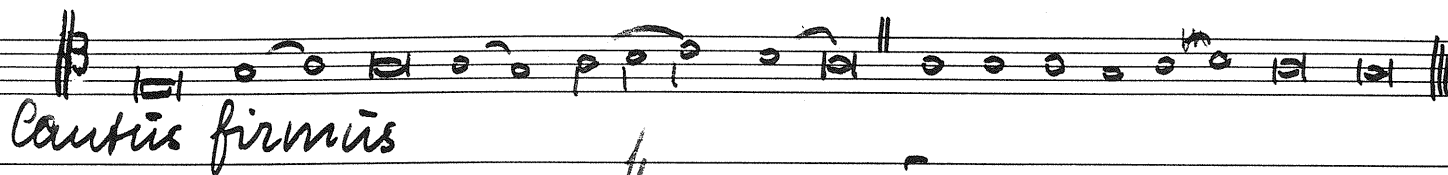


21.

„Te deum laudamus“ 22'



Cantus firmus

Hymnus

(Präambulum - Fuga)

für

zwei Orgeln (event. Orgel und Orchester)

von

Herbert Collins. (1943)

1

Handwritten musical notation for the first system. It consists of a treble staff and a bass staff. The time signature is common time (C). The treble staff contains a melodic line with eighth and sixteenth notes. The bass staff contains a bass line with quarter and eighth notes. A large number '1' is written to the left of the first measure.

1

Handwritten musical notation for the second system. It consists of a treble staff and a bass staff. The treble staff has a key signature change to one sharp (F#) and contains a melodic line with eighth notes. The bass staff contains a bass line with quarter notes. A large number '1' is written to the left of the first measure.

1

Handwritten musical notation for the third system. It consists of a treble staff and a bass staff. The treble staff contains a complex melodic line with many beamed notes and accidentals. The bass staff contains a simple accompaniment with quarter notes. A large number '1' is written to the left of the first measure.

1

Handwritten musical notation for the fourth system. It consists of a treble staff and a bass staff. The treble staff contains a dense melodic texture with many beamed notes and accidentals. The bass staff contains a steady accompaniment with quarter notes. A large number '1' is written to the left of the first measure.

1

1

1

1

1

Handwritten musical notation for the first system, featuring a treble and bass staff with a key signature of one sharp (F#) and a common time signature. The music consists of several measures of eighth and sixteenth notes.

1

Handwritten musical notation for the second system, featuring a treble and bass staff. The treble staff has a key signature of one sharp (F#) and a common time signature. The bass staff contains a complex rhythmic pattern of sixteenth notes.

1

Handwritten musical notation for the third system, featuring a treble and bass staff. The treble staff has a key signature of one sharp (F#) and a common time signature. The bass staff contains a complex rhythmic pattern of sixteenth notes.

1

Handwritten musical notation for the fourth system, featuring a treble and bass staff. The treble staff has a key signature of one sharp (F#) and a common time signature. The bass staff contains a complex rhythmic pattern of sixteenth notes.

1

Handwritten musical notation for the first system. It consists of two staves: a treble staff and a bass staff. The treble staff begins with a treble clef, a key signature of one sharp (F#), and a common time signature (C). The music contains several measures of eighth and sixteenth notes, with some rests. The bass staff begins with a bass clef and contains mostly quarter and eighth notes.

1

Handwritten musical notation for the second system. It consists of two staves: a treble staff and a bass staff. The treble staff continues with eighth and sixteenth notes, including some beamed notes. The bass staff continues with quarter and eighth notes, showing some melodic movement.

1

Handwritten musical notation for the third system. The treble staff features a more complex rhythmic pattern with many beamed eighth and sixteenth notes. The bass staff continues with quarter notes and rests.

1

Handwritten musical notation for the fourth system. The treble staff has a very dense texture with many beamed notes. The bass staff continues with quarter notes and rests, providing a steady accompaniment.

1

Handwritten musical score for a piano piece, measures 1-4. The score is written on three staves. The top staff uses a treble clef and a key signature of one sharp (F#). It contains a complex melodic line with many beamed notes and rests. The middle staff uses a bass clef and contains a bass line with chords and some melodic fragments. The bottom staff uses a bass clef and contains a simple bass line with chords. The piece ends with a double bar line.

Organo

1

Handwritten musical score for Organ I, measures 1-4. The score is written on two staves. The top staff uses a treble clef and contains a melodic line with notes and rests. The bottom staff uses a bass clef and contains a bass line with notes and rests. The piece ends with a double bar line.

1

Organo

2

Handwritten musical score for Organ II, measures 1-4. The score is written on two staves. The top staff uses a treble clef and contains a melodic line with notes and rests. The bottom staff uses a bass clef and contains a bass line with notes and rests. The piece ends with a double bar line.

1

Musical notation for system 1, first part. Treble and bass staves with notes and rests.

2

Musical notation for system 1, second part. Treble and bass staves with notes and rests. Includes fingerings 1 2 3 4.

1

Musical notation for system 2, first part. Treble and bass staves with notes and rests. Includes a large number 2.

2

Musical notation for system 2, second part. Treble and bass staves with notes and rests. Includes the instruction "sehr bewegt".

von hier bis Seite 22 weiter  
ein grip!

1

2

1

2



1

2

1

2

1

Musical notation for system 1, first part. It consists of two staves. The upper staff is in treble clef and contains a melodic line with eighth and sixteenth notes. The lower staff is in bass clef and contains a rhythmic accompaniment with eighth notes.

2

Musical notation for system 1, second part. It consists of two staves. The upper staff has a handwritten annotation "Tutti" above it. The lower staff continues the accompaniment. The music concludes with a double bar line.

1

Musical notation for system 2, first part. It consists of two staves. The upper staff is in treble clef and contains a melodic line with eighth and sixteenth notes. The lower staff is in bass clef and contains a rhythmic accompaniment with eighth notes.

2

Musical notation for system 2, second part. It consists of two staves. The upper staff has a handwritten annotation "Tutti" above it. The lower staff continues the accompaniment. The music concludes with a double bar line.

1

Musical notation for system 1, first part. Treble clef staff with notes and rests. Bass clef staff with notes and rests. Includes a 'p.' dynamic marking.

2

Musical notation for system 1, second part. Treble clef staff with notes and rests. Bass clef staff with notes and rests. Includes the handwritten word 'flüpfend' above the treble staff.

1

Musical notation for system 2, first part. Treble clef staff with notes and rests. Bass clef staff with notes and rests.

2

Musical notation for system 2, second part. Treble clef staff with notes and rests. Bass clef staff with notes and rests.

1

Musical notation for system 1, part 1. It consists of two staves: a treble clef staff on top and a bass clef staff on the bottom. The music is written in a key with one sharp (F#) and a common time signature. The first staff contains a melodic line with eighth and sixteenth notes, while the second staff provides a harmonic accompaniment with chords and moving lines.

2

Musical notation for system 2, part 2. It consists of two staves: a treble clef staff on top and a bass clef staff on the bottom. The music continues from the previous system. The first staff features a melodic line with some trills and grace notes, and the second staff continues the accompaniment.

1

Musical notation for system 3, part 1. It consists of two staves: a treble clef staff on top and a bass clef staff on the bottom. The music continues with a melodic line in the first staff and a harmonic accompaniment in the second staff.

2

Musical notation for system 4, part 2. It consists of two staves: a treble clef staff on top and a bass clef staff on the bottom. The first staff contains a melodic line. The second staff contains guitar chord diagrams with fret numbers and a 'sforz' (sforzando) marking. The diagrams show chords in the 2nd, 4th, and 5th frets. The system concludes with a double bar line.

+ Regal 41

3

1

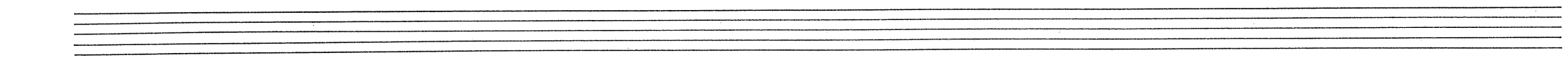
2

1

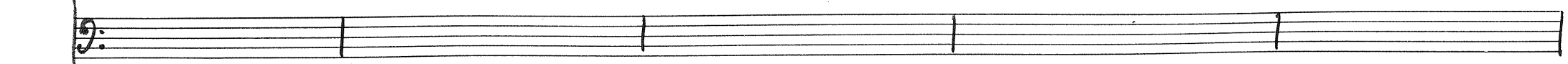
2

1

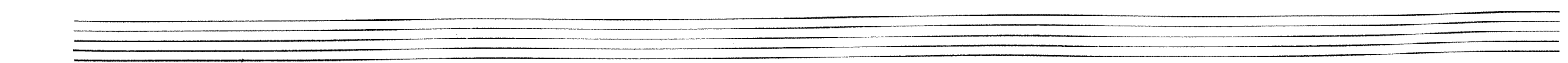
2



1



2



**1**

**2**

*weiter*

*maestros*

**1**

**2**

*1 2 3 4 1 2 3 4*

*rhythmisch*

1

Handwritten musical notation for the first system, first part. It consists of two staves (treble and bass clef) with various notes, rests, and accidentals. A large handwritten '1' is positioned to the left of the staff.

2

Handwritten musical notation for the second system, first part. It consists of two staves with notes and rests. A large handwritten '2' is positioned to the left of the staff.

1

Handwritten musical notation for the third system, first part. It consists of two staves with notes and rests. A large handwritten '1' is positioned to the left of the staff.

2

Handwritten musical notation for the fourth system, first part. It consists of two staves with notes and rests. A large handwritten '2' is positioned to the left of the staff.

1

Handwritten musical notation for the fifth system, first part. It consists of two staves with notes and rests. A large handwritten '1' is positioned to the left of the staff.

2

Handwritten musical notation for the sixth system, first part. It consists of two staves. The first three measures are empty, followed by a large handwritten '4' in the fourth measure, and then musical notation in the fifth and sixth measures. A large handwritten '2' is positioned to the left of the staff.



1

2

1

2

1

2

1

Handwritten musical notation for system 1, part 1. It consists of two staves. The upper staff contains a melodic line with various notes, rests, and accidentals. The lower staff contains a bass line with notes and rests.

2

Handwritten musical notation for system 1, part 2. It consists of two staves. The upper staff contains a melodic line with notes and rests. The lower staff contains a bass line with notes and rests.

1

Handwritten musical notation for system 2, part 1. It consists of two staves. The upper staff contains a melodic line with notes and rests. The lower staff contains a bass line with notes and rests.

2

Handwritten musical notation for system 2, part 2. It consists of two staves. The upper staff contains a melodic line with notes and rests. The lower staff contains a bass line with notes and rests.

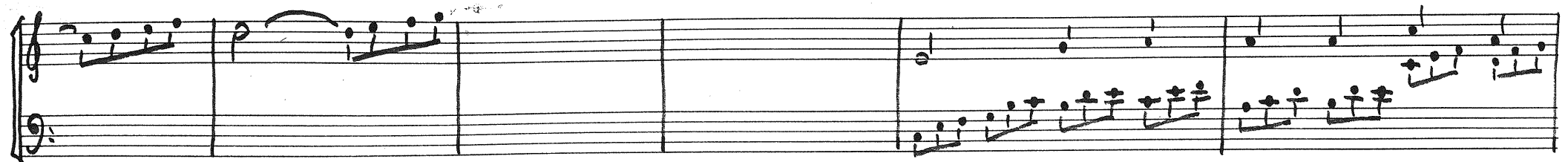
1

Handwritten musical notation for system 3, part 1. It consists of two staves. The upper staff contains a melodic line with notes and rests. The lower staff contains a bass line with notes and rests.

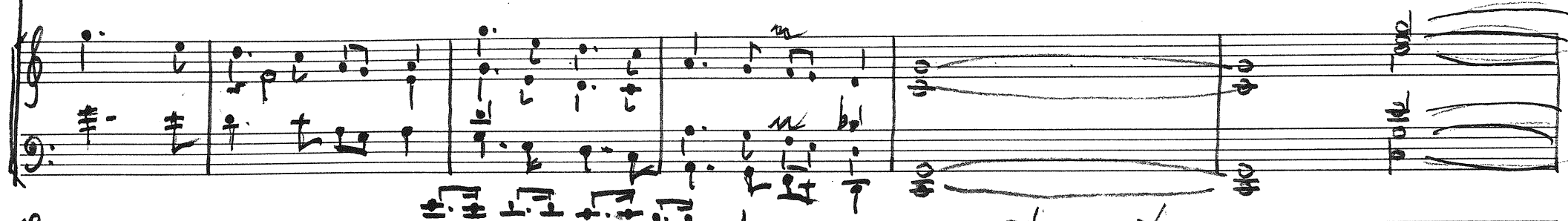
2

Handwritten musical notation for system 3, part 2. It consists of two staves. The upper staff contains a melodic line with notes and rests. The lower staff contains a bass line with notes and rests.


1



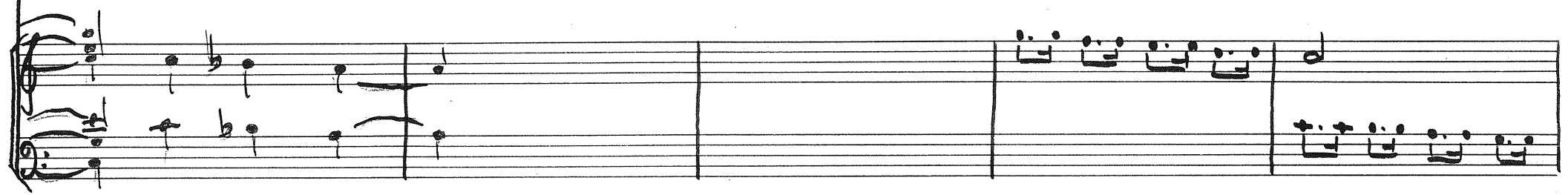
2



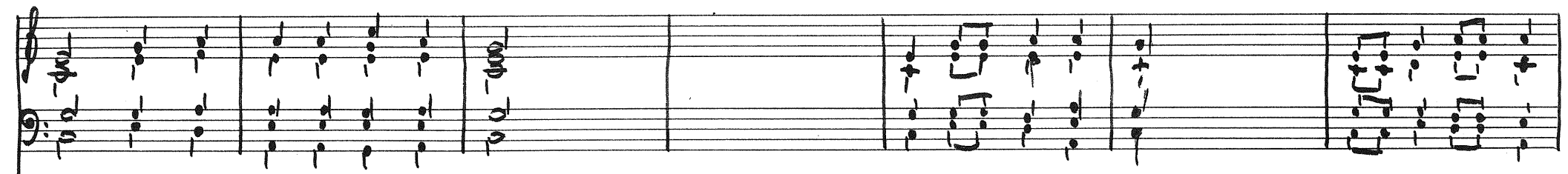
1



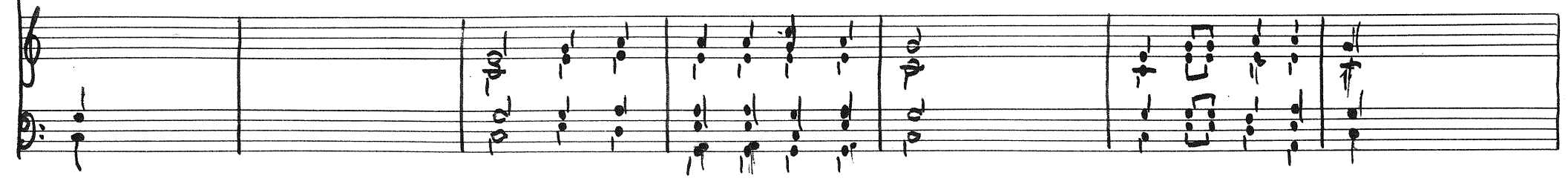
2



1



2



1

Handwritten musical notation for system 1, part 1. It consists of two staves. The upper staff contains a melodic line with eighth and sixteenth notes, and the lower staff contains a bass line with chords and single notes.

2

Handwritten musical notation for system 1, part 2. It consists of two staves. The upper staff features a more active melodic line with many sixteenth notes, while the lower staff continues with a bass line.

1

Handwritten musical notation for system 2, part 1. It consists of two staves. The upper staff has a melodic line with some rests, and the lower staff has a bass line with chords.

2

Handwritten musical notation for system 2, part 2. It consists of two staves. The upper staff has a melodic line with eighth notes, and the lower staff has a bass line. A large, dark ink smudge is present on the right side of the system.

1

Handwritten musical notation for system 3, part 1. It consists of two staves. The upper staff has a melodic line with many rests, and the lower staff has a bass line with chords.

2

Handwritten musical notation for system 3, part 2. It consists of two staves. The upper staff has a melodic line with many rests, and the lower staff has a bass line with chords. The system ends with several horizontal lines in the lower staff, possibly indicating a continuation or a specific performance instruction.

4tel) →

1

2

1

2

1

2

Hel → → →

Ins Tempo, und langsam!

1

2

1

2

1

2

1

2

1

2

1

2

1

2

1

2

1

2

partita allegro

6

Handwritten musical score for two systems, each with two staves. The score includes various musical notations such as notes, rests, and clefs. A large number '6' is written in the first system. The second system contains the handwritten text 'partita allegro'.



*Andante*

1

2

1

2

1

2

*al tempo, with Campanella*

1

Handwritten musical notation for the first system, first part. It consists of two staves: a treble staff and a bass staff. The treble staff contains a melodic line with eighth and sixteenth notes, some beamed together. The bass staff contains a bass line with similar rhythmic values. The system is divided into four measures.

2

Handwritten musical notation for the first system, second part. It consists of two staves: a treble staff and a bass staff. The treble staff contains a melodic line with eighth and sixteenth notes. The bass staff contains a bass line with similar rhythmic values. The system is divided into four measures.

1

Handwritten musical notation for the second system, first part. It consists of two staves: a treble staff and a bass staff. The treble staff contains a melodic line with eighth and sixteenth notes. The bass staff contains a bass line with similar rhythmic values. The system is divided into four measures.

2

Handwritten musical notation for the second system, second part. It consists of two staves: a treble staff and a bass staff. The treble staff contains a melodic line with eighth and sixteenth notes. The bass staff contains a bass line with similar rhythmic values. The system is divided into four measures.

1

Handwritten musical notation for the third system, first part. It consists of two staves: a treble staff and a bass staff. The treble staff contains a melodic line with eighth and sixteenth notes. The bass staff contains a bass line with similar rhythmic values. The system is divided into four measures.

2

Handwritten musical notation for the third system, second part. It consists of two staves: a treble staff and a bass staff. The treble staff contains a melodic line with eighth and sixteenth notes. The bass staff contains a bass line with similar rhythmic values. The system is divided into four measures.

1

2

1

2

1

2

1

2

1

2

1

2

1

2

1

2

1

2

1

Handwritten musical notation for the first system, first part. It consists of a treble and bass staff. The treble staff contains a melodic line with various note values and rests. The bass staff contains a bass line with chords and single notes. The key signature has one sharp (F#). The system ends with a double bar line and a small '(b)' above the final measure.

2

Empty musical staff for the second part of the first system, consisting of a treble and bass staff.

1

Handwritten musical notation for the second system, first part. It consists of a treble and bass staff. The treble staff contains a melodic line with various note values and rests. The bass staff contains a bass line with chords and single notes. The key signature has one sharp (F#).

2

Empty musical staff for the second part of the second system, consisting of a treble and bass staff.

1

Handwritten musical notation for the third system, first part. It consists of a treble and bass staff. The treble staff contains a melodic line with various note values and rests. The bass staff contains a bass line with chords and single notes. The key signature has one sharp (F#).

2

Empty musical staff for the second part of the third system, consisting of a treble and bass staff.

1

2

1

2

1

2

**1**

**2**

**1**

**2**

**1**

**2**



*Al tempo von Vogel I weiter spielen!*

1

2

1

2

1

2

*Fuga*

*überwichtig!*

1

Handwritten musical notation for the first system, consisting of a treble and bass staff. The music is written in a single system with a '1' marking on the left. The notation includes various note values, rests, and accidentals.

1

Handwritten musical notation for the second system, consisting of a treble and bass staff. The music is written in a single system with a '1' marking on the left. The notation includes various note values, rests, and accidentals.

1

Handwritten musical notation for the third system, consisting of a treble and bass staff. The music is written in a single system with a '1' marking on the left. The notation includes various note values, rests, and accidentals.

1

Handwritten musical notation for the fourth system, consisting of a treble and bass staff. The music is written in a single system with a '1' marking on the left. The notation includes various note values, rests, and accidentals.

1

Handwritten musical notation for the fifth system, consisting of a treble and bass staff. The music is written in a single system with a '1' marking on the left. The notation includes various note values, rests, and accidentals.

1

Handwritten musical notation for the sixth system, consisting of a treble and bass staff. The music is written in a single system with a '1' marking on the left. The notation includes various note values, rests, and accidentals.

1

1

2

9. *übermässig sehr B. 141*

1

2

1

2

1

2

1

2

*Plus Tempo better*

1

Musical notation for system 1, part 1. It consists of two staves. The upper staff is in treble clef and contains a melodic line with eighth and sixteenth notes. The lower staff is in bass clef and contains a bass line with eighth and sixteenth notes. The key signature has one sharp (F#).

2

Musical notation for system 1, part 2. It consists of two staves. The upper staff is in treble clef and contains a melodic line with eighth and sixteenth notes. The lower staff is in bass clef and contains a bass line with eighth and sixteenth notes. The key signature has one sharp (F#).

1

Musical notation for system 2, part 1. It consists of two staves. The upper staff is in treble clef and contains a melodic line with eighth and sixteenth notes. The lower staff is in bass clef and contains a bass line with eighth and sixteenth notes. The key signature has one sharp (F#).

2

Musical notation for system 2, part 2. It consists of two staves. The upper staff is in treble clef and contains a melodic line with eighth and sixteenth notes. The lower staff is in bass clef and contains a bass line with eighth and sixteenth notes. The key signature has one sharp (F#).

1

Musical notation for system 3, part 1. It consists of two staves. The upper staff is in treble clef and contains a melodic line with eighth and sixteenth notes. The lower staff is in bass clef and contains a bass line with eighth and sixteenth notes. The key signature has one sharp (F#).

2

Musical notation for system 3, part 2. It consists of two staves. The upper staff is in treble clef and contains a melodic line with eighth and sixteenth notes. The lower staff is in bass clef and contains a bass line with eighth and sixteenth notes. The key signature has one sharp (F#).

1

2

1

2

1

2

*Tempo*

1

Musical notation for system 1, first part. It consists of two staves. The upper staff is in treble clef and contains a melodic line with various notes, rests, and accidentals. The lower staff is in bass clef and contains a bass line with notes and rests.

2

Musical notation for system 1, second part. It consists of two staves. The upper staff is in treble clef and contains a melodic line with notes and rests. The lower staff is in bass clef and contains a bass line with notes and rests.

1

Musical notation for system 2, first part. It consists of two staves. The upper staff is in treble clef and contains a melodic line with notes and rests. The lower staff is in bass clef and contains a bass line with notes and rests.

2

Musical notation for system 2, second part. It consists of two staves. The upper staff is in treble clef and contains a melodic line with notes and rests. The lower staff is in bass clef and contains a bass line with notes and rests. The word "Tempo" is written in the upper left of this system.

1

Musical notation for system 3, first part. It consists of two staves. The upper staff is in treble clef and contains a melodic line with notes and rests. The lower staff is in bass clef and contains a bass line with notes and rests.

2

Musical notation for system 3, second part. It consists of two staves. The upper staff is in treble clef and contains a melodic line with notes and rests. The lower staff is in bass clef and contains a bass line with notes and rests.

The image shows a handwritten musical score consisting of six systems. Each system contains two staves, likely representing a piano and a bassoon or similar instrument. The notation is in a single system with a common time signature. The first four systems are numbered '1' and '2' on the left, while the last two are numbered '1' and '2'. The music features a variety of note values, including eighth and sixteenth notes, and rests. There are several accidentals, including sharps and naturals, scattered throughout the score. The handwriting is clear and legible.

wird klingen!



1

2

Handwritten musical score for two staves, systems 1 and 2. System 1 shows a melodic line in the upper staff and a bass line in the lower staff. System 2 continues the piece with more complex rhythmic patterns and some handwritten annotations.

1

2

Handwritten musical score for two staves, systems 1 and 2. System 1 features a dense texture with many notes in both staves. System 2 includes a large handwritten '11' in the upper staff and some numerical annotations like '1 2 3 4' and 'mit 2 3 4'.

1

2

Handwritten musical score for two staves, systems 1 and 2. System 1 shows a melodic line in the upper staff and a bass line in the lower staff. System 2 features a large handwritten '4' in the upper staff and some numerical annotations like '1 2 3 4'.

1

2

1

2