

Black Tea
(Lament for Viet Nam)
by Gladys Brown

It is the tenth day
Of the tenth month;
Clouds darken the sky
Chill rain falls;
Death's dragon rides my dry bones.
Behind my thin wall,
By my small stone,
I brew my weak tea.
The last fruit clings to the tree,
The wind is its assassin;
With one blow he cuts it down.
Sadly I watch the fields weep;
K'ung Futsé has said
All things must weep.
I, the farmer's wife, weep.
All men go to the great wars;
I have lost two good husbands
And seven sons;
I, who am old and poor, can find
no husband.
I have toiled and worked much.
The land no longer obeys me;
The song of the locust is heard.
Soon famine will follow.
Then I shall taste the long sleep
Of the black tea.

Reprinted from Pegasus in the Seventies
with permission.

NOTES ON PERFORMANCE

Percussion: One pair of metal strips, about 6" by 2½", medium high pitch, very resonant,
struck like claves UU
One pair of hollow bullets or shells, about 3" long, very high pitch, very
resonant, struck like claves oo
Heavy chain at least 5 feet in length }
Triangle Δ

Voice must have a chant-like, almost unnatural character throughout.

Usual Double Bass tuning, harmonics notated at pitch.

For Harp: T means "a la table"

Δ means "with fingernails"

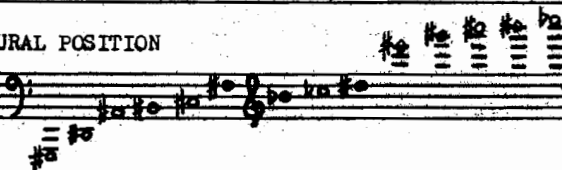
♣ means "dampen resonance completely"

l.v. means "let vibrate"

♣ means "play at lower end of the strings, letting the fingers
slide immediately and vigorously to the body of the instrument"

All harmonics sound either an octave higher ♯ or a twelfth higher ♯

ALTER HARP IN NATURAL POSITION



♩=132 marc. fp FP f f > p f

Soprano It is the tenth day of

Marussion *ff marc.*

Double Bass *marc. ffp ff* *detache*

Harp *marc. ff*

TA E♭F♯ D4

sf ben tenuto

of the tenth month Clouds dark - - - en

pizz. arco *p* *ff* *pizz. tremolo* *p*

lv. ~ *Forcefully hit sounding board with knuckles.* *lv. ~ simile* *A throughout*

B4 F#G4 G#

ff *fp cresc.*

the sky Chill rain falls falls

dolce *pizz. secco*

crescendo molto *ff* *p* *ff con forza*

Tempo 1^o/♩=132

crescendo - - - ff *f* *ff*

lv. *ff* *p* *ff*

C♭B♭ (no A) C# F# F# C# C# E4 T D#

crasc. sf *sf* *mp* *p*

falls
00

Deaths

drag - on -

rides -

sf pesante *pizz throughout* *pizz ord.* *ff* *p* *f* *f* *f*

sf marc. *ord.* *col legno (ricochet)* *ord.*

ff marc. *ord.* *ff* *p* *f* *p*

D# A4 Gb G4 Db Ab C# F# E# Eb

p *f* *f* *p* *l=120* *p dolce*

my - dry

bones -

Be - -

ff *p* *p delicato* *dolce f*

col legno (ricochet)

f *p* *scorrendo*

hind - - - my thin - - - wall -

B4 B#Db E#Eb G4 Bb Eb G# B# F# D# F# A# G# Bb Gb D# F# A# G# Bb Gb D#

tea _____

(non rit.)

crescendo

Ch Bb Ch Ab B# F# G# D# Bb E#b D# F# Bb F# D# Ab Ch Bb D# A# F#

The last fruit clings to the tree

col legno battuto ppp f p f col legno tratto arco mp pizz.

sempre l.v.

(Grace notes are to be played quickly and on the beat)

Ch F# Bb D# G# Ab F# D# Ab Eb#

play the junky on the leaf)

tree the wind is

p *arco* *trem.* *ff marc.* *pizz.* *pizz. ord.*

(pizz.)

P *tranco*

F#E#A# G Bb C#A#E#

its as-sas-in

(pizz.) *arco* *f* *pizz.* *ord.* *trem.* *ord.* *pizz. arco* *arco*

f *pizz.* *ord.* *trem.* *ord.* *pizz. arco* *arco*

D# G#A# C#Bb C# Db A# F# E# B# C#

mp With one blow he cuts

psub cresc.

CF D#Bb Ab

cuts it down

ff #P cresc. #P cresc. talon ffp

D4 CF A# D#Bb

Tune high qb to g#

Sad ly I watch

#P ff col legno ADAGIO

f

the fields weep Kung Fut - - - se has said p dolce

(speken)

F# Eb

6

p

All things must weep

(spoken monotone) *f* $\text{♩} = 116$

I the farmer's wife weep All men go to the

f marcato

EFG# D# D#Bb B# Eb B# B# F# A# D#

great wars I have lost

f marcato

F# G# A# B# D#C# D#C# Bb Gb AbEb G# E# D# A#

7

the land no long - - - er o - - - bey's me

Musical score for the first system, featuring vocal line and piano accompaniment. The vocal line has lyrics: "the land no long - - - er o - - - bey's me". The piano accompaniment includes triplets and slurs.

me the sona of the lo - - - cust is heard

Musical score for the second system, featuring vocal line and piano accompaniment. The vocal line has lyrics: "me the sona of the lo - - - cust is heard". The piano accompaniment includes triplets and slurs.

(With feeling but in tempo) **ADAGIO**

soon fa-mine will fol-low Then I shall taste the long sleep of the black tea

Drop chain

fff

ff *~L.v.* *~l.v.*

Musical score for the third system, featuring vocal line and piano accompaniment. The vocal line has lyrics: "soon fa-mine will fol-low Then I shall taste the long sleep of the black tea". The piano accompaniment includes dynamic markings like *fff*, *ff*, and *~L.v.*, and a "Drop chain" instruction.