

Schranex No. II.

9. Fach 34. Lage.

Sinfonia

co. V. ^{oni} Viola e Basso. 4. St.

del Sig. Fasch.



| | |
|--------|----|
| Musica | |
| 2423 | |
| N | 21 |

Sächs.
Landes-
bibl.

1

URFILM 49/1976 Nr 838

Sächsische Landesbibliothek in Dresden

§3/85 Nr. 95 = 13

Handschrift Nr Ms 2423-N-21

Dieser Band wurde 1996 durch Bestrahlung sterilisiert. Verfärbungen stellen keine Gefahr dar.

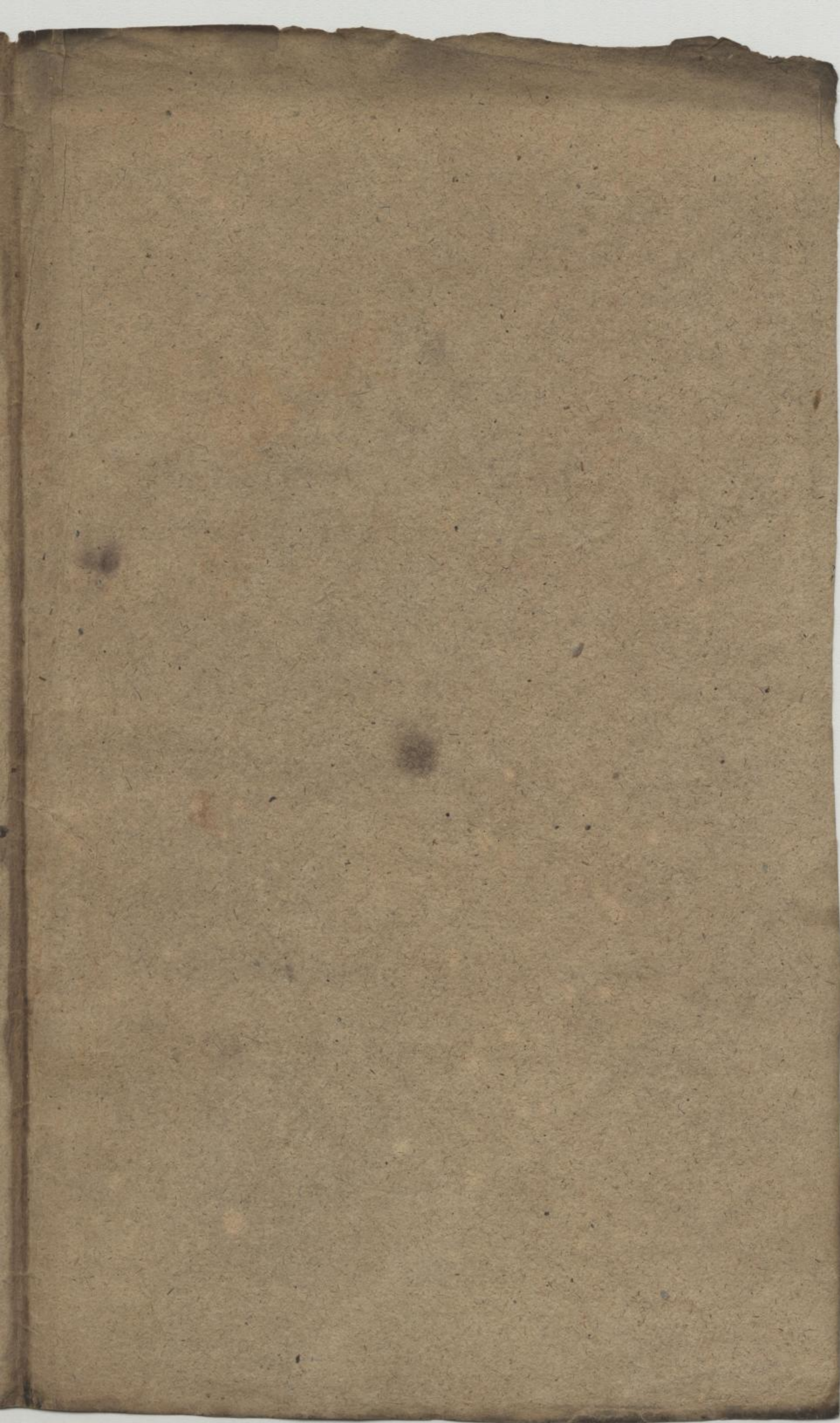
Die Benutzung dieser Handschrift ist nur unter der Bedingung gestattet, daß der Entleiher der hiesigen Bibliothek ein Stück seiner auf die Handschrift bezüglichen Veröffentlichung geschenkweise überläßt, sofern die Bibliotheksverwaltung nicht ausdrücklich auf die Überlassung verzichtet. Zum Durchzeichnen oder zur Herstellung von Lichtbildern ist besondere Erlaubnis einzuholen.

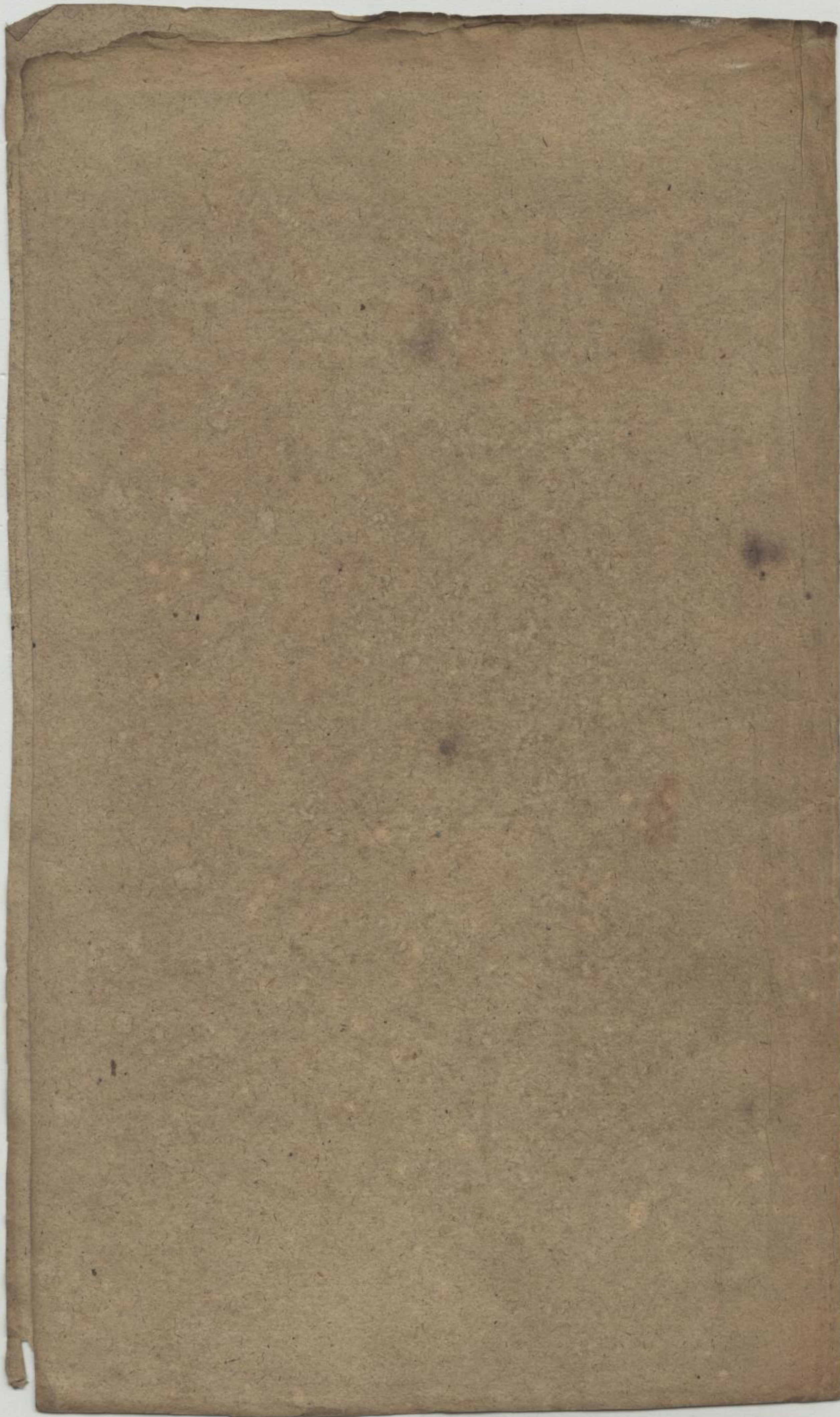
Beherrschende Auskünfte oder Hinweise auf Veröffentlichungen über diese Handschrift, die der Bibliothek noch unbekannt sind, werden dankbar entgegengenommen.

Benutzer der Handschrift seit 1959

| Datum | Name, Stand und Wohnung des Benutzers | Ort der Benutzung | Art der Benutzung (nur eingesehen?, ganz od. teilw. abgeschrieben?, ganz oder teilweise verglichen?) | Zweck der Benutzung (Ist Veröffentlichung beabsichtigt und in welcher Form?) |
|-------|---------------------------------------|-------------------|--|--|
|-------|---------------------------------------|-------------------|--|--|

III-9-130 c Id-G 54 59 11 2 359





Sinfonia.

Violino Primo.

Vivace. *piano.* *piu piano.* *forte.*

piano. *forte.*

piano. *forte.*

piano. *forte.*

piano. *forte.*

piano. *forte.*

forte. *piano.* *piu piano.*

forte. *piano.*

forte.

piano.

forte. *piano.* *piu piano.* *forte.*

piano. *forte.*

piano.

304 6. 1. 6. 7

Mus. 2423-N-21

Sächs. Landesbibl.

2

Handwritten musical notation on three staves. The top two staves contain a complex melodic and harmonic passage with various ornaments and dynamics. The third staff shows a few notes followed by a double bar line and some scribbles.

Andante.

Handwritten musical notation on seven staves. The first staff is marked "Andante." and "piano." The subsequent staves feature intricate textures with frequent trills and dynamic markings like "forte" and "piano." The piece concludes with a double bar line and some scribbles.

Tolti Subito.

2

3

2423
N 27

Allabreve. $\text{B}\sharp$ 2/1

5. *tr* *tr*

piano. *forte.* 3. *tr* *tr* *tr*

piano. *forte.*

piano. *forte.*

3

4

Sinfonia.

Violino Secondo.

Violino. *piano.* *ppiano.* *for.*

piano. *forte.*

piano. *forte.*

piano. *forte.*

piano. *forte.*

piano. *ppiano.* *forte.*

piano. *forte.*

forte. *piano.*

forte. *piano.*

5

Sächs. Landesbibl.

6

Ca 304

Mus. 2423-N-21

Handwritten musical notation on three staves. The top two staves contain dense, fast-moving passages with trills and slurs. The bottom staff has a few notes followed by a double bar line and a scribbled-out section.

Andante.

Handwritten musical notation for the "Andante" section, consisting of seven staves. It features a variety of dynamics including piano, forte, and trills.

Tolti subito.

4

7

24-23

9/27

6

Allabreve. *tr*



7

8

The image shows a page of handwritten musical notation on aged, yellowed paper. The score consists of approximately 14 staves of music. The notation includes various note values, rests, and dynamic markings such as *piano*, *forte*, *piu.*, and *piu piano*. The word *Allegro* is written at the beginning of the third staff. The music is written in a key with one sharp (F#) and a 3/8 time signature. The paper shows signs of wear, including creases and some discoloration. At the bottom of the page, there are two small handwritten symbols, possibly 'g' and 'f', which might be figured bass or performance instructions.

g

f

Sinfonia.

Viola.

Vivace. *piano. ppiano. forte.*

piano. forte. piano.

for.

piano. forte. piano. forte.

piano. forte.

piano. forte. piano.

piano. ppiano. forte. piano.

forte.

piano.

forte. piano. ppiano. forte.

piano. forte.

piano. for. piano. forte.

Andante.

piano. forte. piano. forte. piano.

for. pia. forte. piano.

Ca 304



10

Colla Subito.

Mus. 2423-N-21

9

Allabreve. *Mb.*

Handwritten musical score for the first section, "Allabreve". It consists of 11 staves of music. The notation includes various note values, rests, and dynamic markings such as "piano." and "forte." with "tr" (trills) above some notes. The key signature has two sharps (F# and C#).

Allegro.

Handwritten musical score for the second section, "Allegro". It consists of 8 staves of music. The notation is more rhythmic and includes dynamic markings like "piano.", "pizzicato.", and "forte.". The key signature remains two sharps.

Sinfonia.

Basso.

piano. pppiano. forte.
fortissimo. piano. forte.
for. fort.
3. piano. forte.
pp. for.
piano. forte.
piano. forte. piano. pppiano.
forte. piano. forte.
piano. for. piano. forte.

Andante.
piano.
for. piano. for.
for. piano.
for. piano. forte. piano.

Tutti Subito.

6a 304

Mus. 2423-N-21

Sächs. Landesbibl.

12

AA

Allabreve.

A handwritten musical score on aged, yellowed paper. The score consists of approximately 15 staves of music. The notation includes various note values, rests, and accidentals. The key signature is one sharp (F#). The tempo is marked 'Allabreve.' at the beginning. There are several trills marked with 'tr'. The score concludes with a double bar line and a fermata. At the bottom of the page, there are handwritten numbers: 'A 2', '13', and '2423'. The paper shows signs of age, including some staining and foxing.

allegro

piano. forte.

A 2

13

2423

