

GAVOTTE in B MINOR (3)

(from: *Ouverture - Suite in B Minor, TWV 55:h3*)

for Strings & Bass continuo

Score (00':50'')

(Urtext)

Georg Philipp Telemann (1681 - 1767)

Ed. Michel Rondeau

Gavotte $\text{♩} = 100$

Musical score for Violin I, Violin II, Viola, and Double Bass, measures 1-4. The score is in B minor (two sharps) and common time (C). The tempo is marked as Gavotte with a quarter note equal to 100. The Violin I part starts with a half note G4, followed by quarter notes A4, B4, C5, D5, E5, F5, G5, and a half note G4. The Violin II part starts with a half note G3, followed by quarter notes A3, B3, C4, D4, E4, F4, G4, and a half note G3. The Viola part starts with a half note G2, followed by quarter notes A2, B2, C3, D3, E3, F3, G3, and a half note G2. The Double Bass part starts with a half note G1, followed by quarter notes A1, B1, C2, D2, E2, F2, G2, and a half note G1.

Musical score for Violin I, Violin II, Viola, and Double Bass, measures 5-8. The score continues from the previous system. The Violin I part starts with a half note G4, followed by quarter notes A4, B4, C5, D5, E5, F5, G5, and a half note G4. The Violin II part starts with a half note G3, followed by quarter notes A3, B3, C4, D4, E4, F4, G4, and a half note G3. The Viola part starts with a half note G2, followed by quarter notes A2, B2, C3, D3, E3, F3, G3, and a half note G2. The Double Bass part starts with a half note G1, followed by quarter notes A1, B1, C2, D2, E2, F2, G2, and a half note G1. The score ends with a double bar line and repeat dots.

GAVOTTE in B MINOR (3) - TWV 55:h3 - Telemann - Score

Vln. I

Vln. II

Vla.

D.B.

12

Vln. I

Vln. II

Vla.

D.B.

17

Vln. I

Vln. II

Vla.

D.B.

GAVOTTE in B MINOR (3)

(from: *Ouverture - Suite in B Minor, TWV 55:h3*)

for Strings & Bass continuo

Violin I

Georg Philipp Telemann (1681 - 1767)

Ed. Michel Rondeau

Gavotte $\text{♩} = 100$

6

12

17

GAVOTTE in B MINOR (3)

(from: *Ouverture - Suite in B Minor, TWV 55:h3*)

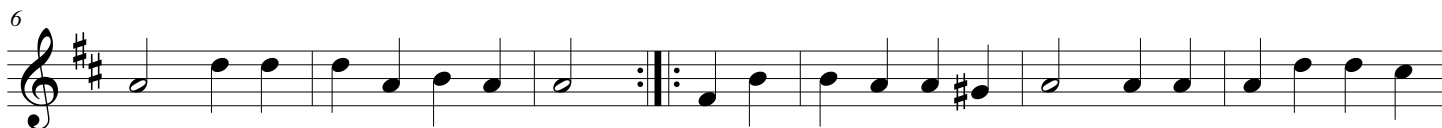
for Strings & Bass continuo

Violin II

Georg Philipp Telemann (1681 - 1767)

Ed. Michel Rondeau

Gavotte $\text{♩} = 100$



GAVOTTE in B MINOR (3)

(from: *Ouverture - Suite in B Minor, TWV 55:h3*)

for Strings & Bass continuo

Viola

Georg Philipp Telemann (1681 - 1767)

Ed. Michel Rondeau

Gavotte ♩ = 100



GAVOTTE in B MINOR (3)

(from: *Ouverture - Suite in B Minor, TWV 55:h3*)

for Strings & Bass continuo

Double Bass

Georg Philipp Telemann (1681 - 1767)

Ed. Michel Rondeau

Gavotte $\text{♩} = 100$

