

42253199.

Mr. Durand
at Graves vi-40

à publier
C. Sant-Sain

à Monsieur Léon Metellier
premier Violon de l'Opéra
et de la Société des Concerts

8
21
29 pl.

Sonate
pour Basson

avec accompagnement de piano



op. 168



Cat. D. F. = 10064
copied by Durand & Co 1921

Franz Schubert

Ms. 843

à Monsieur et...

Sonata
pour Basson avec Acc⁺ de piano

I.

Ch. Saint-Saëns
Op. 168

Allegretto moderato

Basson

Piano

legato



cresc.

dim.

cresc.

dim.

12

Handwritten musical score, first system. The top staff is heavily crossed out with diagonal lines. The middle and bottom staves contain musical notation with various accidentals and dynamics. A dynamic marking *p* is visible in the first measure of the middle staff. A measure rest is present in the final measure of the system.

Handwritten musical score, second system. The top staff contains a melodic line with a dynamic marking *p*. The middle and bottom staves contain accompaniment. A measure rest is present in the final measure of the system.



Handwritten musical score, third system. The top staff begins with a dynamic marking *p* and a *cresc.* instruction. The middle and bottom staves contain musical notation with various accidentals and dynamics. A dynamic marking *mf* is visible in the first measure of the middle staff. A measure rest is present in the final measure of the system.

Handwritten musical score, first system. It consists of three staves: a single treble clef staff at the top, and a grand staff (treble and bass clefs) below. The music is in a key with two flats (B-flat and E-flat) and a common time signature. The first system contains three measures. A fermata is placed over the first measure of the top staff. The second measure of the top staff has a fermata. The third measure of the top staff has a fermata. The grand staff continues with rhythmic accompaniment. A large number '3' is written at the end of the system.

Handwritten musical score, second system. It consists of three staves: a single treble clef staff at the top, and a grand staff (treble and bass clefs) below. The music is in a key with two flats (B-flat and E-flat) and a common time signature. The first system contains three measures. A fermata is placed over the first measure of the top staff. The second measure of the top staff has a fermata. The third measure of the top staff has a fermata. The grand staff continues with rhythmic accompaniment. A large number '6' is written at the end of the system.

Handwritten musical score, third system. It consists of three staves: a single treble clef staff at the top, and a grand staff (treble and bass clefs) below. The music is in a key with two flats (B-flat and E-flat) and a common time signature. The first system contains three measures. A fermata is placed over the first measure of the top staff. The second measure of the top staff has a fermata. The third measure of the top staff has a fermata. The grand staff continues with rhythmic accompaniment. A large number '9' is written at the end of the system. The word "Ped." is written below the grand staff. A red circular stamp is visible on the right side of the page, containing the text "CONSERVATOIRE NAL DE MUSIQUE" and "BIBLIOTHÈQUE" and "PARIS".

Handwritten musical score for the first system. The top staff is in treble clef with a key signature of one sharp (F#) and a 4/4 time signature. It contains several measures of music with various note values and rests. The bottom staff is in bass clef with a 12/8 time signature and includes a 'Ped.' marking. The system concludes with a fermata over the final measure.

Handwritten musical score for the second system. The top staff is in treble clef with a key signature of one sharp (F#) and a 4/4 time signature. It features a triplet of eighth notes in the first measure and a melodic line with a fermata. The bottom staff is in bass clef with a 6/8 time signature and includes a 'Ped.' marking. The system concludes with a fermata over the final measure.

Handwritten musical score for the third system. The top staff is in treble clef with a key signature of one sharp (F#) and a 4/4 time signature. It contains several measures of music with various note values and rests. The bottom staff is in bass clef with a 6/8 time signature and includes a 'dim.' marking. The system concludes with a fermata over the final measure.

Handwritten musical score, first system. It consists of three staves. The top staff is a single melodic line. The middle and bottom staves are grouped together with a brace, representing a piano accompaniment. The music is written in a key with one sharp (F#) and a common time signature (C). The notation includes various note values, rests, and dynamic markings.



Handwritten musical score, second system. It consists of three staves. The top staff continues the melodic line. The middle and bottom staves continue the piano accompaniment. The notation includes various note values, rests, and dynamic markings.

Handwritten musical score, third system. It consists of three staves. The top staff continues the melodic line. The middle and bottom staves continue the piano accompaniment. The notation includes various note values, rests, and dynamic markings. At the bottom right, there is a handwritten signature and the number '12' over a flourish.

86

II.

Allegro scherzando

Handwritten musical score for the first system. The top staff is in treble clef with a key signature of one sharp (F#) and a time signature of 6/8. It begins with a dynamic marking of *mf*. The bottom staff is in bass clef with the same key signature and time signature. It contains a complex rhythmic accompaniment with various note values and rests.

Handwritten musical score for the second system. The top staff continues the melodic line from the first system. The bottom staff continues the accompaniment, featuring a prominent bass line with eighth and sixteenth notes.

Handwritten musical score for the third system. The top staff continues the melodic line. The bottom staff continues the accompaniment. The system concludes with a final time signature of 6/8 written at the bottom right.

Handwritten musical score, first system. The top staff features a melodic line with slurs and dynamic markings *legg.* and *cresc.*. The bottom two staves show accompaniment with chords and rhythmic patterns. A red circular stamp is visible on the right side of the system.



Handwritten musical score, second system. The top staff continues the melodic line. The bottom two staves show accompaniment with a red mark on a note in the second measure and a '6' below the staff in the third measure.

Handwritten musical score, third system. The top staff continues the melodic line with a *tr* marking. The bottom two staves show accompaniment with a '9' below the staff in the third measure.

Handwritten musical score for the first system. It consists of two staves: a treble clef staff on top and a bass clef staff on the bottom. The music is written in a key with one sharp (F#) and a 2/4 time signature. The first staff contains a complex melodic line with many sixteenth and thirty-second notes, often beamed together. The second staff provides a harmonic accompaniment with chords and moving lines. There are several accidentals (sharps and naturals) throughout the system.

Handwritten musical score for the second system. It features two staves. The first staff begins with a boxed number '1' and a dynamic marking 'p' (piano). The music continues with complex rhythmic patterns and accidentals. A 'cres.' (crescendo) marking is present in the middle of the system. The second staff provides accompaniment with chords and moving lines. There are several accidentals and a 'cresc.' marking in the second staff as well.

Handwritten musical score for the third system. It consists of two staves. The first staff features a long, continuous melodic line with many notes, some beamed together. The second staff provides accompaniment with chords and moving lines. The system concludes with a final cadence. There are several accidentals and a 'p' (piano) marking at the beginning.

Handwritten musical score for the first system, featuring a treble and bass clef system with piano and forte dynamics. The notation includes various note values, rests, and dynamic markings such as *cres.* and *f*. A red circular stamp is visible on the right side of the system.



Handwritten musical score for the second system, featuring a treble and bass clef system with piano and forte dynamics. The notation includes various note values, rests, and dynamic markings such as *mf* and *f*. A red circular stamp is visible on the right side of the system.

Handwritten musical score for the third system, featuring a treble and bass clef system with piano and forte dynamics. The notation includes various note values, rests, and dynamic markings such as *f* and *mf*. A red circular stamp is visible on the right side of the system.

Handwritten musical score, first system. It consists of three staves. The top staff is in treble clef with a key signature of three sharps (F#, C#, G#) and a common time signature. It begins with a *cresc.* marking. The middle and bottom staves are in bass clef with the same key signature. The bottom staff has a *cresc.* marking. The system concludes with a double bar line and a $\frac{12}{10}$ time signature.

Handwritten musical score, second system. It consists of three staves. The top staff is in treble clef with a key signature of three sharps (F#, C#, G#) and a common time signature. It begins with a *dim.* marking. The middle and bottom staves are in bass clef with the same key signature. The bottom staff has a *dim.* marking. The system concludes with a double bar line and a $\frac{6}{4}$ time signature.

Handwritten musical score, third system. It consists of three staves. The top staff is in treble clef with a key signature of three sharps (F#, C#, G#) and a common time signature. It begins with a *dim.* marking. The middle and bottom staves are in bass clef with the same key signature. The bottom staff has a *dim.* marking. The system concludes with a double bar line and a $\frac{9}{8}$ time signature.



Handwritten musical score for the first system. It consists of a vocal line (top staff) and piano accompaniment (bottom two staves). The key signature has one sharp (F#). The vocal line begins with a melodic phrase, followed by a long rest. The piano accompaniment provides harmonic support with chords and moving lines. A double bar line with a repeat sign is located below the piano part.

Handwritten musical score for the second system. The vocal line continues with a melodic phrase. The piano accompaniment features a triplet of eighth notes in the left hand. The system concludes with a *cresc.* marking and a fermata over the final notes.

Handwritten musical score for the third system. The vocal line starts with a *dim.* marking. The piano accompaniment includes a *cresc.* marking. The system ends with a *pp.* dynamic marking and a fermata. A page number '9' is written below the system.

Handwritten musical score, first system. It consists of a single melodic line on a five-line staff and a grand staff (treble and bass clefs) below it. The music is in a key with one sharp (F#) and a common time signature (C). A box containing the number '4' is drawn around the first measure of the upper staff. The notation includes various note values, rests, and dynamic markings such as *f* and *dim.*. A fermata is placed over a note in the upper staff. A circled number '3' is written below the grand staff.



Handwritten musical score, second system. It features a single melodic line and a grand staff. The music continues from the first system. The upper staff begins with the dynamic marking *dim.*. The grand staff also begins with *dim.*. The notation includes various note values, rests, and dynamic markings. A circled number '6' is written below the grand staff.

Handwritten musical score, third system. It features a single melodic line and a grand staff. The music continues from the second system. The upper staff begins with the dynamic marking *sempre dim.*. The grand staff also begins with *sempre dim.*. The notation includes various note values, rests, and dynamic markings. A circled number '9' is written below the grand staff.

Handwritten musical score for the first system. The top staff is in treble clef with a key signature of one sharp (F#). The bottom staff is in bass clef with a key signature of two sharps (F# and C#). The music consists of several measures with various rhythmic patterns, including eighth and sixteenth notes. There are dynamic markings such as *mf* and *f*. A handwritten number '13' is written below the first few measures of the bass staff.

Handwritten musical score for the second system. The notation continues from the first system. The top staff features more complex rhythmic patterns, including some beamed sixteenth notes. The bottom staff continues with its bass clef and two-sharp key signature. Dynamic markings include *mf* and *f*. A handwritten number '6' is visible below the bottom staff in the later measures.

Handwritten musical score for the third system. The top staff begins with a *Dim.* (diminuendo) marking. The music concludes with a final cadence. The bottom staff shows some final notes and rests. A handwritten number '9' is written below the bottom staff in the middle of the system.

Handwritten musical score for a piano piece, measures 12-14. The score is written on three staves. The top staff is in treble clef with a key signature of one sharp (F#) and a common time signature (C). The middle and bottom staves are in bass clef with a key signature of one sharp (F#). The notation includes various rhythmic values and accidentals.



3.

molto adagio

espressivo

p

Handwritten musical score for a piano piece, measures 5-9. The score is written on three staves. The top staff is in treble clef with a key signature of one sharp (F#) and a 4/4 time signature. The middle and bottom staves are in bass clef with a key signature of one sharp (F#) and a 4/4 time signature. The notation includes various rhythmic values and accidentals.

Handwritten musical score for a piano piece, measures 10-14. The score is written on three staves. The top staff is in treble clef with a key signature of one sharp (F#) and a 4/4 time signature. The middle and bottom staves are in bass clef with a key signature of one sharp (F#) and a 4/4 time signature. The notation includes various rhythmic values and accidentals.

row cresc.

Handwritten musical score for the first system. It features a treble clef with a key signature of one sharp (F#) and a bass clef. The music consists of a melodic line in the treble and a harmonic accompaniment in the bass. The first measure is marked with a forte 'f' dynamic. The system concludes with a fermata and a '9' time signature.

dim.

Handwritten musical score for the second system. It continues the piece with a 'dim.' (diminuendo) marking above the treble staff. The system ends with a double bar line and a '12/15' time signature.

cresc.

cresc.

Handwritten musical score for the third system. It shows a 'cresc.' (crescendo) marking in both the treble and bass staves. The music features dense chordal textures and melodic lines.

dim.

dim.

Handwritten musical score for the fourth system. It features 'dim.' (diminuendo) markings in both staves. The system concludes with a double bar line and a fermata.

Handwritten musical score for the first system. The top staff is a vocal line in G major, starting with a half rest followed by a quarter note G, then a half note A, and a quarter note B. The piano accompaniment consists of two staves: the right hand plays a series of eighth notes (G, A, B, C, D, E, F#, G) and the left hand plays a bass line with notes G, B, D, F#, G, B, D, F#.



Handwritten musical score for the second system. The vocal line continues with a half note C, a quarter note D, and a quarter note E. The piano accompaniment continues with eighth notes in the right hand and a bass line in the left hand.

12
16

Handwritten musical score for the third system. The top staff has a first ending bracket over a series of eighth notes (G, A, B, C, D, E, F#, G). The piano accompaniment features a *cresc.* marking and continues with eighth notes in both hands.

3

Handwritten musical score for the first system. The top staff is a treble clef with a melodic line, starting with a *p* dynamic marking. The bottom two staves are a grand staff with piano accompaniment. The key signature has one sharp (F#).

Handwritten musical score for the second system. The top staff continues the melodic line. The bottom two staves are the piano accompaniment. There are *cresc.* markings in both the piano and grand staff parts. A section of the piano accompaniment in the right hand is circled.

Handwritten musical score for the third system. The top staff continues the melodic line. The bottom two staves are the piano accompaniment. There are *p* and *ff* markings. The system ends with a double bar line and a fermata.

~~12/14~~

Handwritten musical score for the first system. The top staff is a treble clef with a key signature of one sharp (F#) and a common time signature (C). The melody consists of several measures with various note values and rests. The piano accompaniment is written on a grand staff (treble and bass clefs). The piano part includes a 'cresc.' marking. A red circular stamp is visible on the right side of the system, containing the text 'CONSERVATOIRE N. DE MUSIQUE' and 'M. DE'.

Handwritten musical score for the second system. The top staff continues the melody. The piano accompaniment includes a 'dim.' marking and some triplet markings (indicated by '3' over notes). The piano part continues with various chordal textures and rhythmic patterns.

Handwritten musical score for the third system. It begins with a '2a' marking in a box. The piano part is highly active with many sixteenth notes. The system concludes with a double bar line and a '12/18' marking below the staff.

12/18

Handwritten musical score system 1. It consists of three staves. The top staff is a single melodic line in treble clef with a key signature of one sharp (F#) and a 2/4 time signature. The middle and bottom staves are a grand staff with a treble clef and a bass clef, both with a key signature of one sharp. The music is written in a fluid, cursive style. A large, dark diagonal line is drawn across the right half of the system, crossing all three staves.

Handwritten musical score system 2. It consists of three staves, similar to the first system. The notation continues with various rhythmic patterns and melodic lines. A large, dark diagonal line is drawn across the right half of the system, crossing all three staves.

Handwritten musical score system 3. It consists of three staves. The notation includes dynamic markings: *res.* (rescendi) and *dim.* (diminuendo). The music concludes with a final cadence. A large, dark diagonal line is drawn across the left half of the system, crossing all three staves.

Handwritten musical score for the first system. It consists of three staves. The top staff is in treble clef with a key signature of one sharp (F#) and contains a melodic line with a *cresc.* marking. The middle and bottom staves are in bass clef and contain accompaniment. The system concludes with a *Len* marking.



Handwritten musical score for the second system. It begins with a *dim.* marking. The top staff has a melodic line, and the bottom staff has accompaniment. A section is marked *Allegro moderato*. The system includes a boxed number '3' and a 'rit.' marking.

Handwritten musical score for the third system. It features a melodic line in the top staff and accompaniment in the bottom staff. The system concludes with a '6' marking.

Handwritten musical score for the first system. The top staff is in treble clef with a key signature of one sharp (F#). The bottom two staves are a grand staff with piano accompaniment. The music consists of several measures of eighth and sixteenth notes, with some slurs and dynamic markings like *pp* and *all.* (allegro).

12

Handwritten musical score for the second system. It continues the piece with piano accompaniment. A circled annotation $\frac{15}{20}$ is present in the lower right of the system. The notation includes various rhythmic values and slurs.

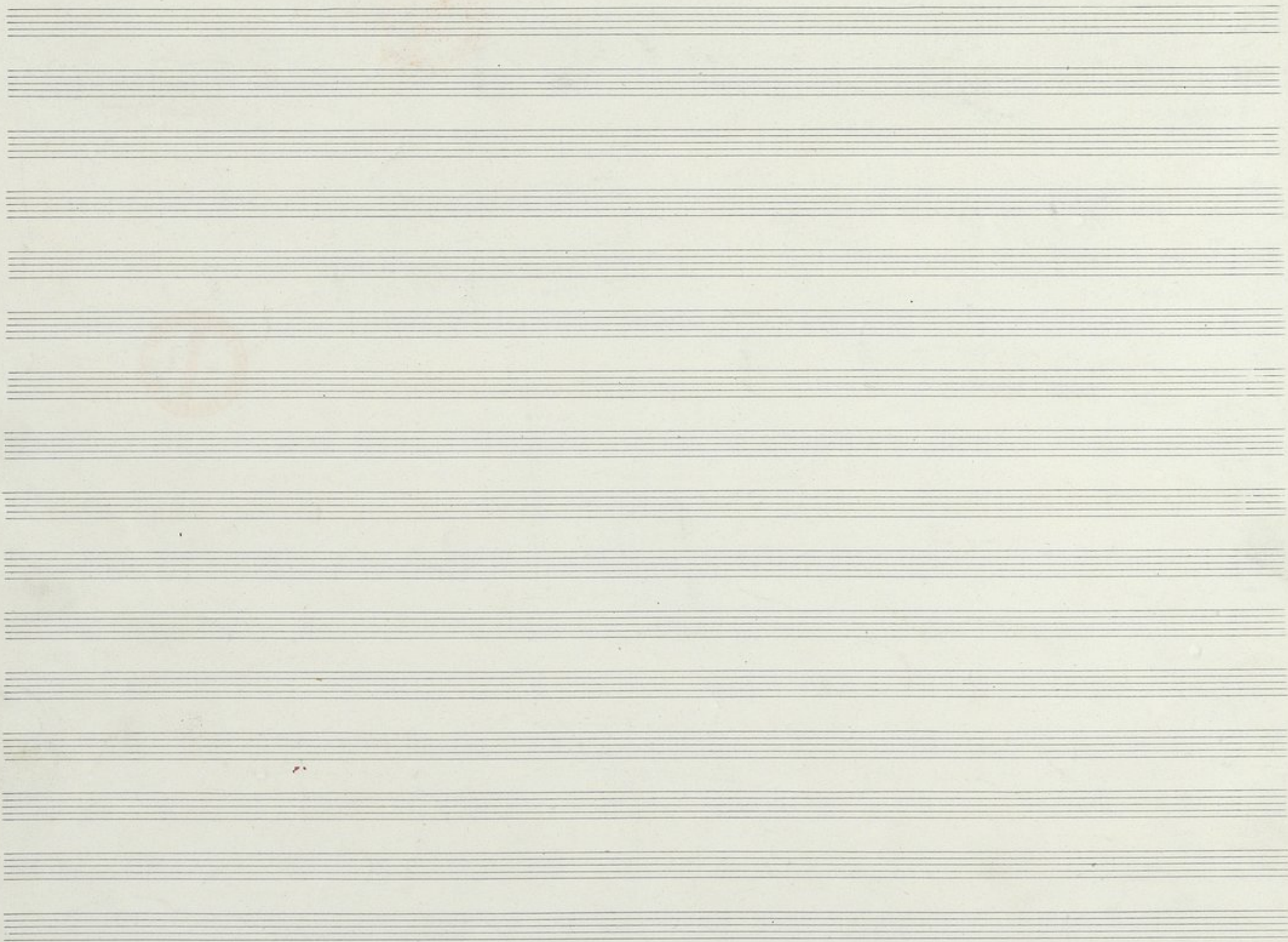
Handwritten musical score for the third system. The top staff features dynamic markings *cres.* and *dim.*. The bottom two staves include piano accompaniment with *cres.* and *dim.* markings. The system concludes with a final chord and a fermata-like flourish.

Handwritten musical score for the first system, consisting of a single treble clef staff and a grand staff (treble and bass clefs). The music is in G major and 3/4 time. The first staff begins with a wavy line above the first measure and the instruction *cresc.* below it. The grand staff also begins with *cresc.* below the first measure. The piece features a melodic line in the treble staff and a more rhythmic accompaniment in the grand staff. A triplet of eighth notes is marked with a '3' above it in the second measure of the treble staff. The system concludes with a double bar line.

Handwritten musical score for the second system, consisting of a single treble clef staff and a grand staff. The music continues from the first system. The grand staff includes dynamic markings: *p* (piano) in the first measure, *mf* (mezzo-forte) in the second measure, and *sfz* (sforzando) in the third measure. The system ends with a double bar line and the number '12' written above '21'.



Sant-Saints
 1921



à Monsieur etc. *Andate*
Basson

G. Sarrubain
Op. 168



Allegretto moderato

I

Handwritten musical score for Bassoon, Op. 168 by G. Sarrubain. The score is written on ten staves in G major (one sharp) and 3/4 time. It begins with a first ending bracket labeled 'I'. The tempo is marked 'Allegretto moderato'. The score includes various dynamics such as *p*, *cresc.*, *dim.*, *mf*, and *f*. There are several slurs and phrasing marks throughout. The piece concludes with a final cadence in 3/4 time, marked with a first ending bracket 'I' and a double bar line.

Bin
Cop 21 MS-843.

Oct 10.064

Handwritten musical score, first system. It consists of three staves. The top staff is in treble clef with a key signature of one sharp (F#) and a 2/4 time signature. It contains several measures of music with slurs and dynamic markings like *mf* and *pp*. The middle staff is in bass clef with a key signature of one sharp (F#) and contains notes with slurs and a dynamic marking of *pp*. The bottom staff is in bass clef with a key signature of one sharp (F#) and contains notes with slurs and a dynamic marking of *pp*. The word "Anfang" is written above the first measure of the top staff.

II.

Handwritten musical score, second system. It consists of seven staves. The first staff is in treble clef with a key signature of one sharp (F#) and a 6/8 time signature. It is marked "Allegro scherzando" and "mf". The second staff is in bass clef with a key signature of one sharp (F#) and contains notes with slurs and a dynamic marking of *pp*. The third staff is in treble clef with a key signature of one sharp (F#) and contains notes with slurs and a dynamic marking of *pp*. The fourth staff is in bass clef with a key signature of one sharp (F#) and contains notes with slurs and a dynamic marking of *pp*. The fifth staff is in treble clef with a key signature of one sharp (F#) and contains notes with slurs and a dynamic marking of *pp*. The sixth staff is in bass clef with a key signature of one sharp (F#) and contains notes with slurs and a dynamic marking of *pp*. The seventh staff is in bass clef with a key signature of one sharp (F#) and contains notes with slurs and a dynamic marking of *pp*. The word "legg." is written below the fourth staff, and "cresc." is written below the fifth staff. The page ends with a double bar line and a 2/2 time signature.

Handwritten musical notation on a single staff. It begins with a treble clef and a key signature of one sharp (F#). The notation includes several measures of music with various note values and rests. A dynamic marking of *fm* is present above the first measure. A measure number '1' is written below the staff.

Handwritten musical notation on a single staff, continuing from the previous staff. It features a treble clef and a key signature of one sharp. The notation includes several measures of music with various note values and rests. A dynamic marking of *p* is present above the staff. A measure number '3' is written below the staff.



Handwritten musical notation on a single staff, continuing from the previous staff. It features a treble clef and a key signature of one sharp. The notation includes several measures of music with various note values and rests. A dynamic marking of *cresc.* is present above the staff. A measure number '4' is written below the staff.

Handwritten musical notation on a single staff, continuing from the previous staff. It features a treble clef and a key signature of one sharp. The notation includes several measures of music with various note values and rests. A dynamic marking of *f* is present above the staff.

Handwritten musical notation on a single staff, continuing from the previous staff. It features a treble clef and a key signature of one sharp. The notation includes several measures of music with various note values and rests. A dynamic marking of *cresc.* is present above the staff. A measure number '7' is written below the staff.

Handwritten musical notation on a single staff, continuing from the previous staff. It features a treble clef and a key signature of one sharp. The notation includes several measures of music with various note values and rests. A dynamic marking of *mf* is present above the staff. A measure number '8' is written below the staff.

Handwritten musical notation on a single staff, continuing from the previous staff. It features a treble clef and a key signature of one sharp. The notation includes several measures of music with various note values and rests. A dynamic marking of *f* is present above the staff. A measure number '10' is written below the staff.

Handwritten musical notation on a single staff, continuing from the previous staff. It features a treble clef and a key signature of one sharp. The notation includes several measures of music with various note values and rests. A measure number '12' is written above the staff. A measure number '3' is written below the staff. The notation ends with a double bar line and a repeat sign.

Handwritten musical notation on a single staff. The key signature has three sharps (F#, C#, G#). The music begins with a *p* dynamic marking. The notation includes various note values and rests, with a *cresc.* marking at the end of the line.

Handwritten musical notation on a single staff. The key signature has three sharps. The music features a *p* dynamic marking and a *q* (quasi) marking. The notation includes various note values and rests.

Handwritten musical notation on a single staff. The key signature has three sharps. The music begins with a *I* (first ending) marking. The notation includes various note values and rests, with a *3* (triple) marking and a *4* (quadruple) marking.

Handwritten musical notation on a single staff. The key signature has three sharps. The music features a *f* (forte) dynamic marking, a *dim.* (diminuendo) marking, and a *p* (piano) marking. The notation includes various note values and rests.

Handwritten musical notation on a single staff. The key signature has three sharps. The music begins with a *legg.* (leggiero) dynamic marking. The notation includes various note values and rests, with a *6* (sextuplet) marking and a *3* (triple) marking.

Handwritten musical notation on a single staff. The key signature has three sharps. The music features a *f* (forte) dynamic marking and a *pp* (pianissimo) dynamic marking. The notation includes various note values and rests, with a *7* (septuplet) marking and an *8* (octuplet) marking.

Handwritten musical notation on a single staff. The key signature has three sharps. The music features a *f* (forte) dynamic marking and a *p* (piano) dynamic marking. The notation includes various note values and rests, with a *9* (nonuplet) marking.

Handwritten musical notation on a single staff. The key signature has three sharps. The music begins with a *2* (doublet) marking. The notation includes various note values and rests, with a *cresc.* marking and a *1* (first ending) marking. There is a handwritten *10/11* in the bottom left corner.

Handwritten musical notation on a single staff. It begins with a treble clef and a key signature of one sharp (F#). The first measure contains a half note with a dynamic marking of *f* and a fermata. A circled number '4' is written above the first measure. The notation continues with eighth and sixteenth notes, some beamed together. A fermata is present over a measure in the middle of the staff. A small number '2' is written below the staff near the end.

Handwritten musical notation on a single staff. It begins with a treble clef and a key signature of one sharp (F#). The notation includes eighth and sixteenth notes. A dynamic marking of *dim.* is written below the first measure. A fermata is present over a measure. A circled number '5' is written above the staff. The staff ends with a double bar line.



Handwritten musical notation on a single staff. It begins with a bass clef and a key signature of one sharp (F#). The notation consists of eighth and sixteenth notes, some beamed together. A circled number '4' is written below the first measure. The staff ends with a double bar line.

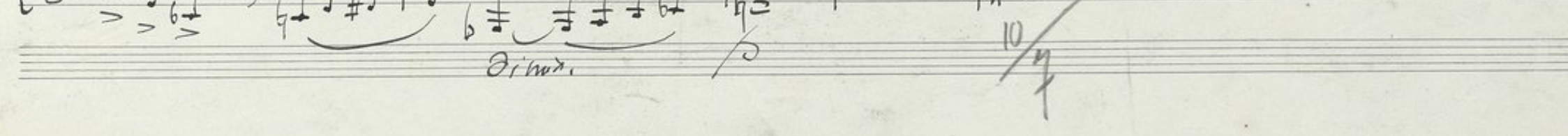
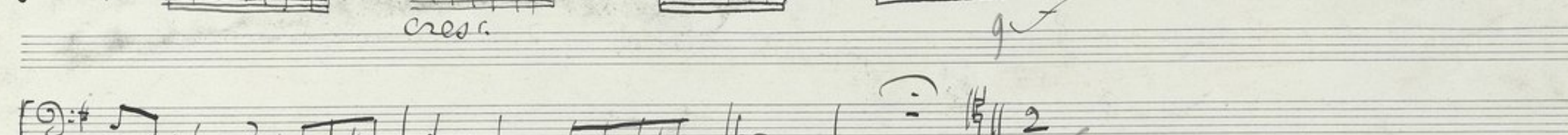
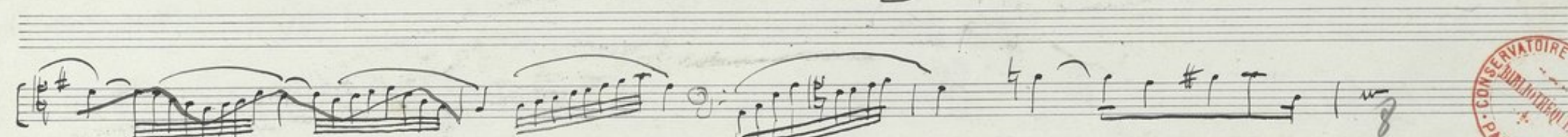
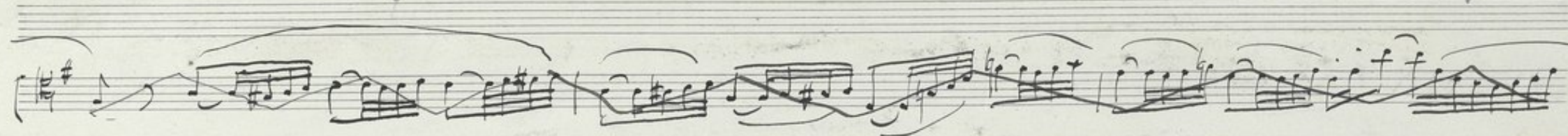
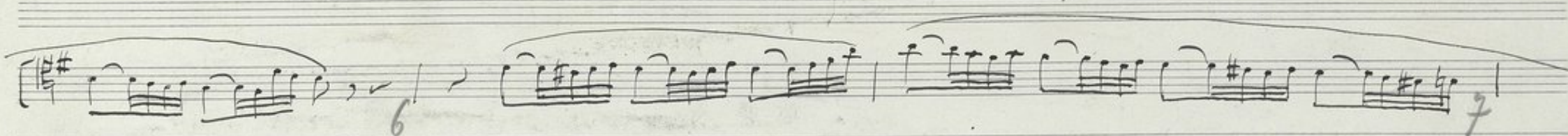
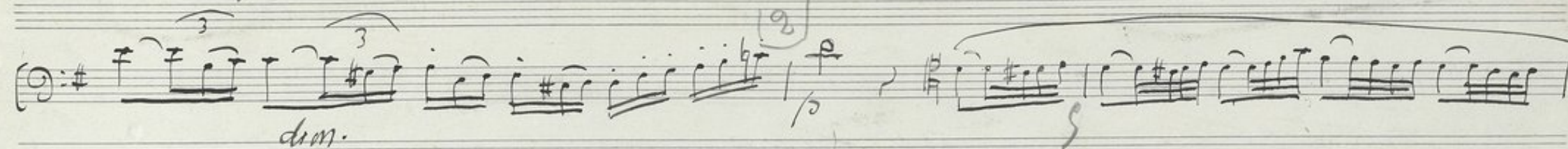
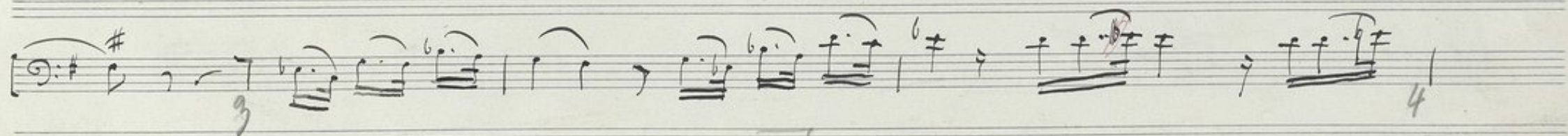
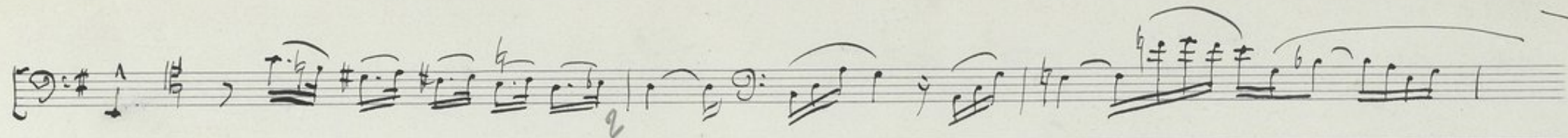
Handwritten musical notation on a single staff. It begins with a bass clef and a key signature of one sharp (F#). The notation consists of eighth and sixteenth notes, some beamed together. A circled number '6' is written below the staff. A dynamic marking of *cresc.* is written below the end of the staff. The staff ends with a double bar line.

Handwritten musical notation on a single staff. It begins with a treble clef and a key signature of one sharp (F#). The notation includes eighth and sixteenth notes, some beamed together. A dynamic marking of *dim.* is written below the staff. A circled number '7' is written below the first measure. A circled number '8' is written below the staff. The staff ends with a double bar line.

Handwritten musical notation on a single staff. It begins with a treble clef and a key signature of one sharp (F#). The notation consists of eighth and sixteenth notes, some beamed together. A circled number '9' is written below the staff. The staff ends with a double bar line and a circled number '10' written below it.

Adagio

Handwritten musical score for a piece in G major, 4/4 time, marked Adagio. The score consists of ten staves. The first staff begins with a treble clef, a key signature of one sharp (F#), and a 4/4 time signature. It includes a first ending bracket and a "ripetitivo" marking. The second staff continues the melodic line with a second ending bracket. The third staff features a triplet of eighth notes. The fourth staff includes "cresc." and "dim." markings. The fifth staff shows a key change to G minor. The sixth staff is a bass line starting with a bass clef and a key signature of one sharp. The seventh staff continues the bass line with a first ending bracket. The eighth staff includes a "cresc." marking and a 9/6 time signature. The ninth staff continues the bass line with a first ending bracket. The piece concludes with a final cadence in the tenth staff.



3 All^o non troppo

Handwritten musical notation on a five-line staff. It begins with a treble clef, a key signature of one sharp (F#), and a 2/4 time signature. The melody consists of quarter and eighth notes with accents. A first ending bracket labeled '1' spans the final two measures of the line.

Handwritten musical notation on a five-line staff, continuing the melody from the previous line. It features a second ending bracket labeled '2' under a measure with a red slash through it.

Handwritten musical notation on a five-line staff. The melody continues with eighth notes. A third ending bracket labeled '3' is under the first measure, and a fourth ending bracket labeled '4' is under the last measure.

Handwritten musical notation on a five-line staff. The melody continues with eighth notes. A bracket labeled '5' is under the first measure, and the word 'cresc.' is written below the staff at the end.

Handwritten musical notation on a five-line staff. It features a first ending bracket labeled '6' and a first ending sign. The melody continues with eighth notes. The word 'trium' is written above the staff, and 'd'ur.', 'p', and 'cresc.' are written below.

Handwritten musical notation on a five-line staff. It features a first ending bracket labeled '7' and a first ending sign. The melody continues with eighth notes. The word 'f' is written below the staff.

Handwritten musical notation on a five-line staff. It features a first ending bracket labeled '8' and a first ending sign. The melody continues with eighth notes. The word 'f' is written below the staff. At the end, there is a double bar line with '10' above it and '8' below it, indicating a change in time signature.