

STATEMENT

1912

STATE OF NEW YORK  
IN SENATE  
January 14, 1912

# SONATINE

pour Quatuor à cordes

PIERRE MENU

## VIOLONCELLE

### I

Modéré. (♩ = 132)

*à demi voix.*

First staff of music in bass clef, 3/4 time signature, key of B-flat major. It begins with a half note G2, followed by quarter notes G2, F2, E2, D2, C2, and a final half note G1.

Second staff of music, starting with a measure rest, followed by quarter notes G2, F2, E2, D2, C2, B1, A1, and a final half note G1. A box labeled 'A' is placed above the eighth measure.

Third staff of music, starting with a measure rest, followed by quarter notes G2, F2, E2, D2, C2, B1, A1, and a final half note G1. A box labeled 'B' is placed above the eighth measure. Performance instructions include *faible et en augmentant peu à peu.* and *fort très doux subitement.*

Fourth staff of music, starting with a measure rest, followed by quarter notes G2, F2, E2, D2, C2, B1, A1, and a final half note G1. It features a series of chords and intervals.

Fifth staff of music, starting with a measure rest, followed by quarter notes G2, F2, E2, D2, C2, B1, A1, and a final half note G1. It features a series of chords and intervals.

Sixth staff of music, starting with a measure rest, followed by quarter notes G2, F2, E2, D2, C2, B1, A1, and a final half note G1. A box labeled 'C' is placed above the first measure. Performance instructions include *Un peu retenu.* and *Mouv!*

Seventh staff of music, starting with a measure rest, followed by quarter notes G2, F2, E2, D2, C2, B1, A1, and a final half note G1. Performance instructions include *dim.* and *en augmentant peu à peu.*

Eighth staff of music, starting with a measure rest, followed by quarter notes G2, F2, E2, D2, C2, B1, A1, and a final half note G1. Performance instruction includes *fort.*

Ninth staff of music, starting with a measure rest, followed by quarter notes G2, F2, E2, D2, C2, B1, A1, and a final half note G1. A box labeled 'D' is placed above the first measure. Performance instructions include *dim.* and *très ouaté.*

480472

Mouv<sup>t</sup>

VIOLONCELLE

**K**  
*faible.*  
 3

*En animant progressivement.*  
*fort.*

**L**  
*Animez encore.*

*plus de force.*  
**M**

*Un peu retenu.*  
*doucement.*

**N**  
*doux et en augmentant peu à peu!*

*fort.*  
*doux subitement.*  
**O**

*augmentez.*

*en serrant.*  
*très fort.*  
 3

**P** 1<sup>er</sup> Mouvt  
*bien plus doux.*  
 0

*en dehors.* Q  
*expressif.* *voilé.*

*augmentez.* *doux subitement.*

R **Retenu.**

*un peu en dehors.*

S *assez doux et en augmentant peu à peu.*

**Animez progressivement.**

T *encore plus de force.*

**Serrez encore le mouv!** *très fort.*

**1 Plus calme.**

U *lointain.* *diminuez peu à peu.* **Cédez un peu.**

II

Très calme. (♩ = 50)

Sourdine. doux et expressif.

plus doux.

un peu plus fort.

Un peu agité.

plus fort.

doux subit.

augmentez peu à peu.

fort.

pp

très doux subitement.

en dehors.

retenir un peu. Mouvt

à l'aise.

doux et expressif.

plus doux.

un peu plus fort.

H

dim. jusqu'à la fin.

faible.

en affaiblissant peu à peu.

Un peu retenu.

pizz.

Otez la sourdine.

III

Très vif. (♩ = 100)

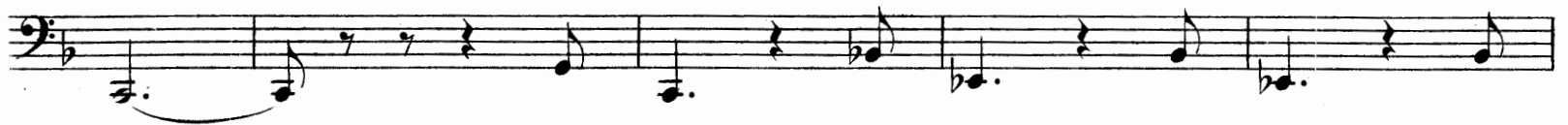
pizz. très précis.

tr. archet. un peu plus de son.

VIOLONCELLE



Cédez un peu. **D**







*augmentez progressivement.*



VOLONCELLE

archet. *tr.* **M**



*augmentez.*



*plus faible.*

**N**



*doux.*

**O**



*plus faible.*

**P**



*plus faible.*

**En pressant un peu.**



*plus faible.*

**Q**



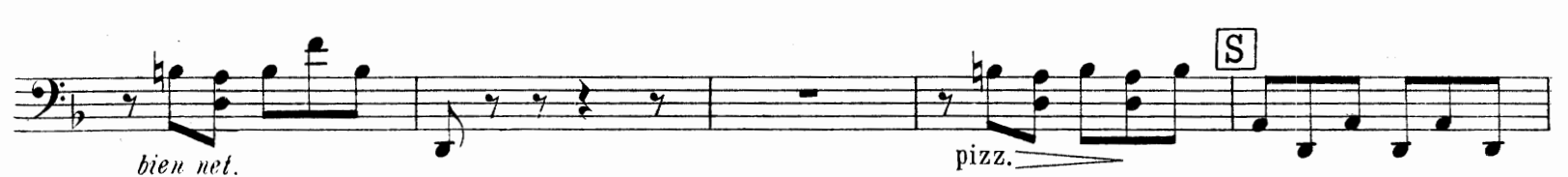
*faible.*

1 2 3 4



*faible.*

5 6 **R**



*faible.*

**S**



*bien net.*

Sans ralentir.