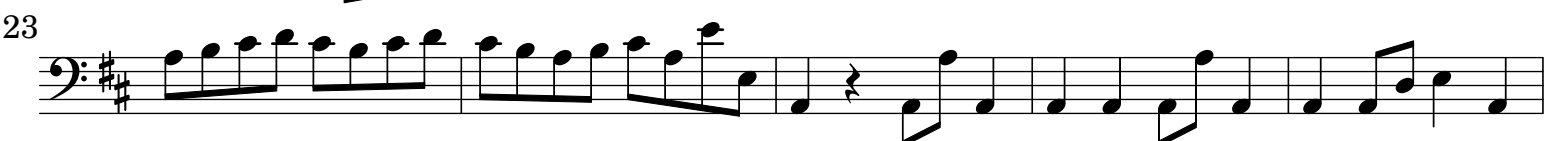
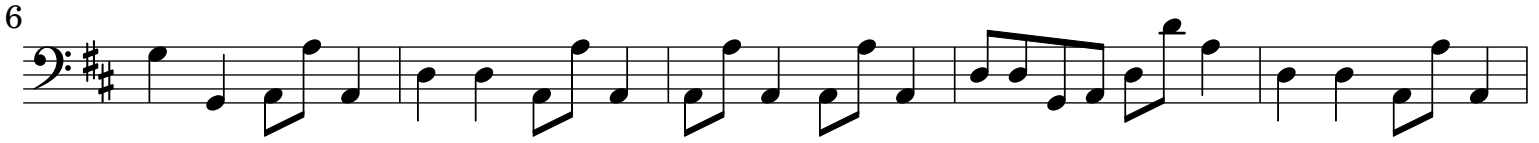
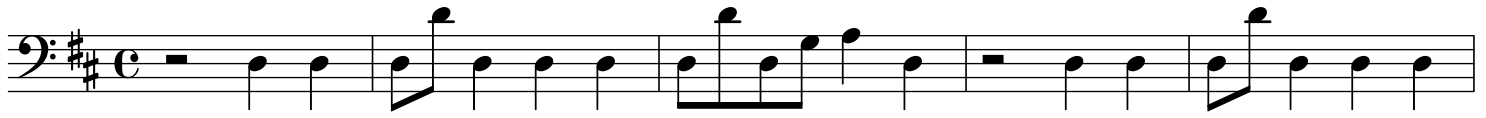


# Concerto La Pastorella [RV 95]

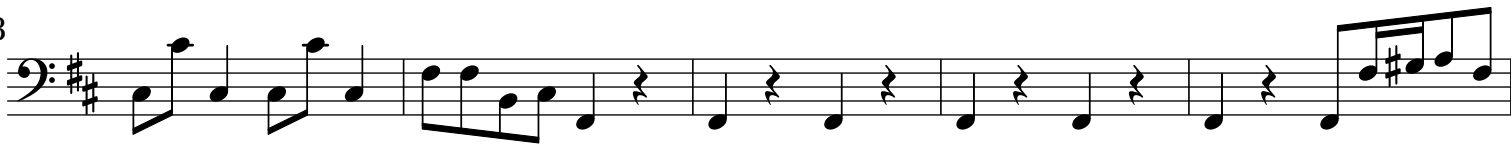
## Fagotto

A. Vivaldi (1678-1741)


[1.] [Allegro]



63




68




71




76




79



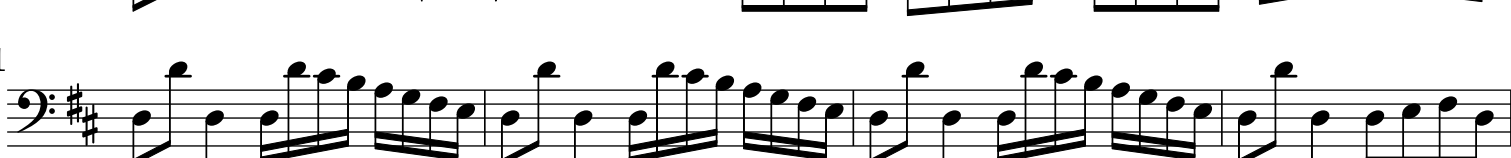
82




87




91




95




99




103



107



112



The image displays a page of musical notation for the Bassoon (Fagotto) part of Vivaldi's Concerto La Pastorella RV 95. The score is written in bass clef with a key signature of one sharp (F#). It consists of 115 measures, organized into systems of five measures each. The notation includes various rhythmic values such as eighth, sixteenth, and thirty-second notes, as well as rests and dynamic markings. The piece concludes with a fermata over the final note.

[2.] Largo tacet

[3.] All[egr]o

6

11

20

24

30

36

43

48

53

56

59

62

68

16