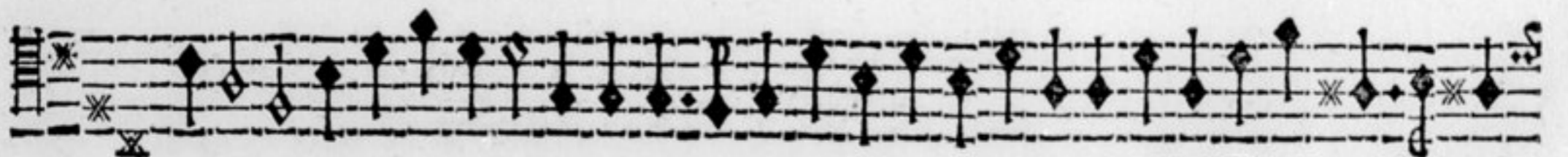
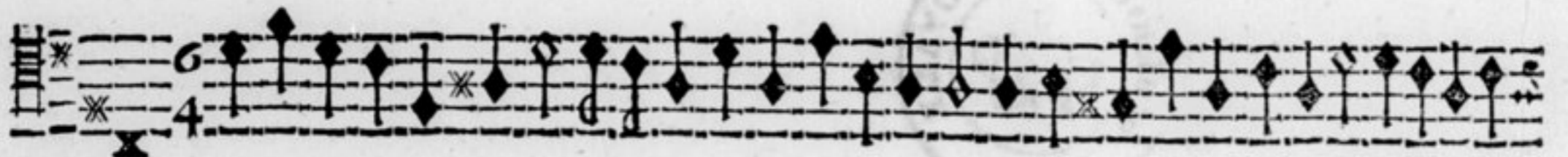


Viol. II. di Braccio.

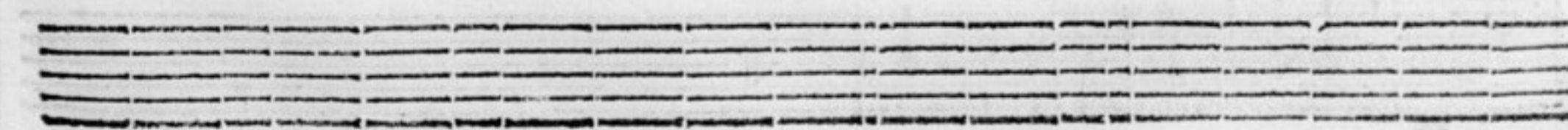


Sonata.




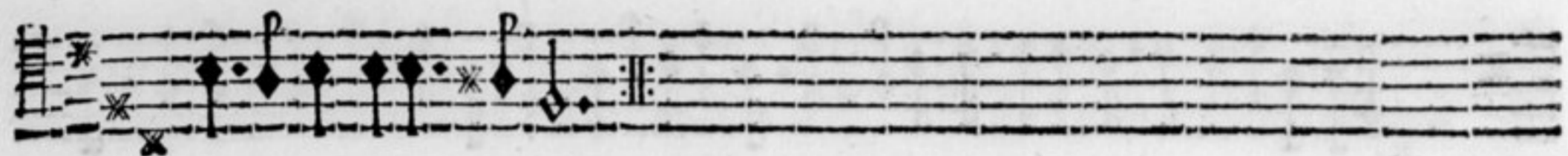
Adagio.

Viol. II. di Braccio.



Viol. II. di Braccio.

4. 
Sarabande.



5. 
Gavotte.



6. 
Gigue.



Viol. II. di Braccio.

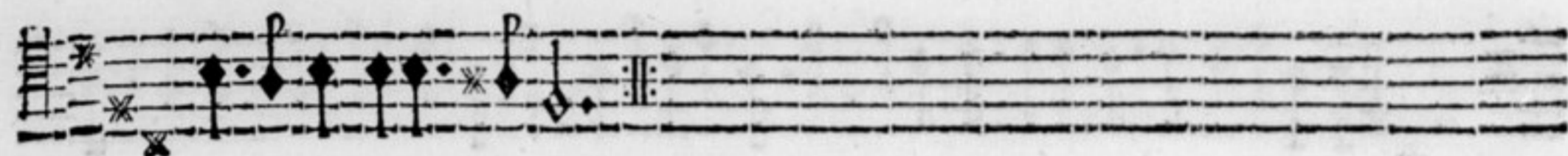
7.  **Sonata.**



Piano. **Verte.**

Viol. II. di Braccio.

4. 
Sarabande.



5. 
Gavotte.



6. 
Gigue.



Viol. II. di Braccio.

7. 

Sonata.



Piano.

Verte.

Viol. II. di Braccio.

Allegro.

Adagio

ano.

8. Allemanda.

Viol. II. di Braccio.

9. Courant.

10. Sarabande.

11. Gavotte.

Viol. II. di Braccio.

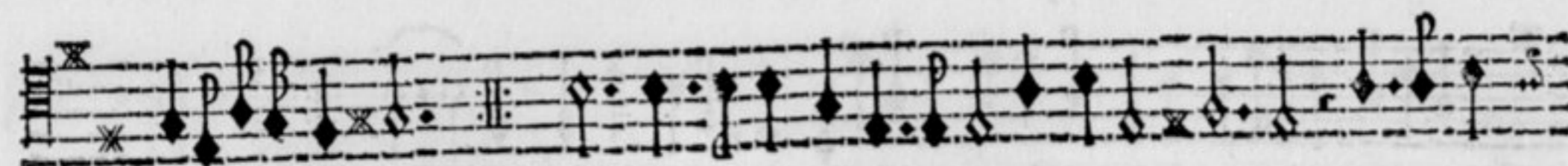
12. 
Gigve.



13. 
Sonata.



Viol. II. di Braccio.



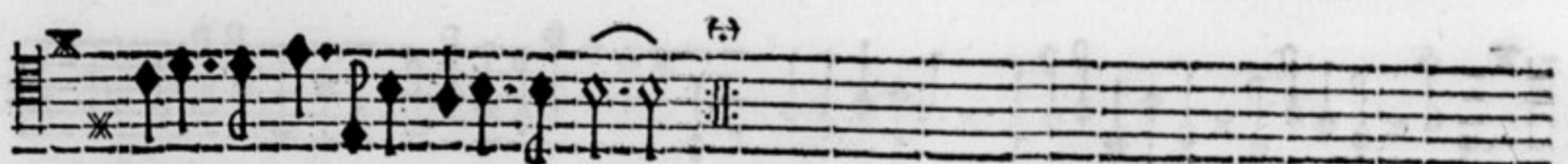
14. Allemanda.



Viol. II. di Braccio.



15. Courant.

A musical staff with a treble clef and one sharp, featuring a triplet of eighth notes. The piece is titled "Courant."


16. Sarabande.

A musical staff with a treble clef and one sharp, featuring a triplet of eighth notes. The piece is titled "Sarabande."

17. Gigue.

A musical staff with a treble clef and one sharp, featuring a triplet of eighth notes. The piece is titled "Gigue."

Viol. II. di Braccio.



A single musical staff containing a sequence of notes, some marked with an asterisk (*), and ending with a repeat sign (||:).

18.



A musical staff for piece 18, starting with a treble clef and a key signature of one sharp (F#). It contains a sequence of notes with some asterisks and a repeat sign.

Courant.



A musical staff for piece 18, continuing the sequence of notes with asterisks and a repeat sign.



A musical staff for piece 18, continuing the sequence of notes with asterisks and a repeat sign.

19.



A musical staff for piece 19, starting with a treble clef and a key signature of one sharp (F#). It contains a sequence of notes with some asterisks and a repeat sign.

Sonata.

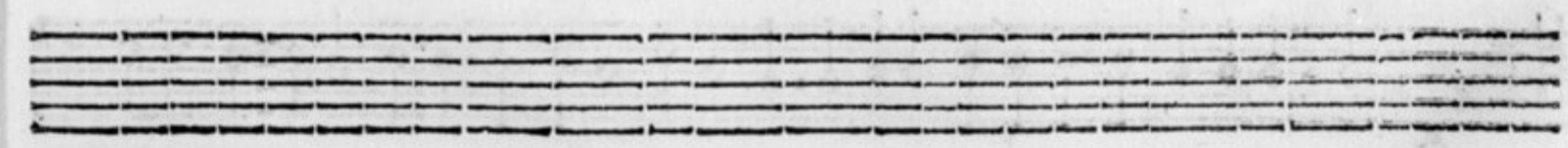


A musical staff for piece 19, continuing the sequence of notes with asterisks and a repeat sign.

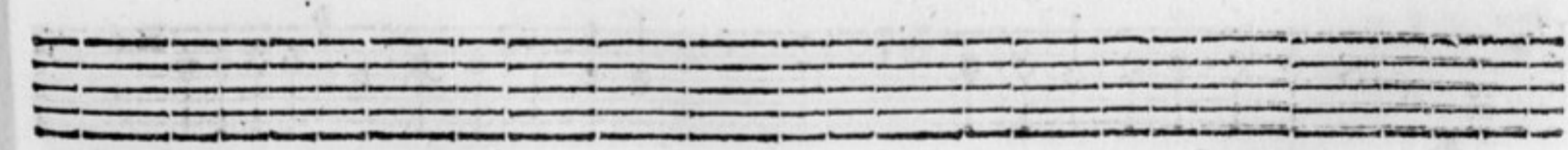


A musical staff for piece 19, continuing the sequence of notes with asterisks and a repeat sign.

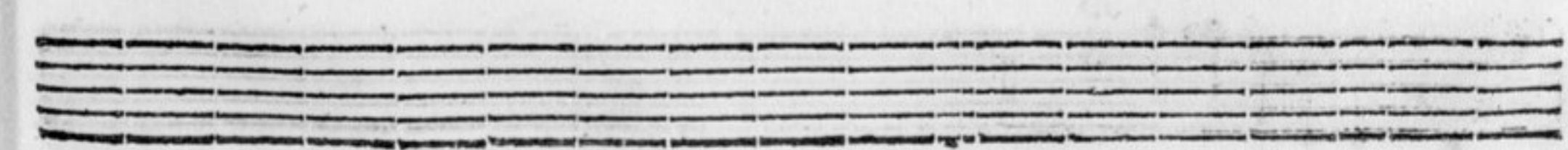
Verte.



An empty musical staff.

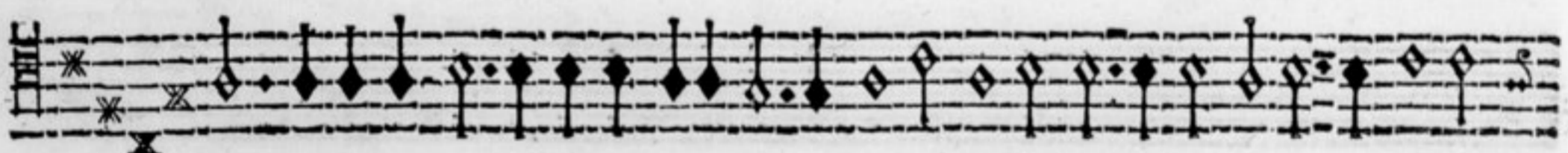
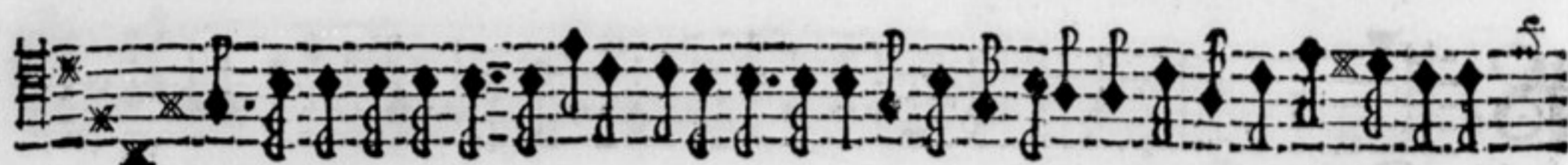


An empty musical staff.



An empty musical staff.

Viol. II. di Braccio.




Viol. II. di Braccio.

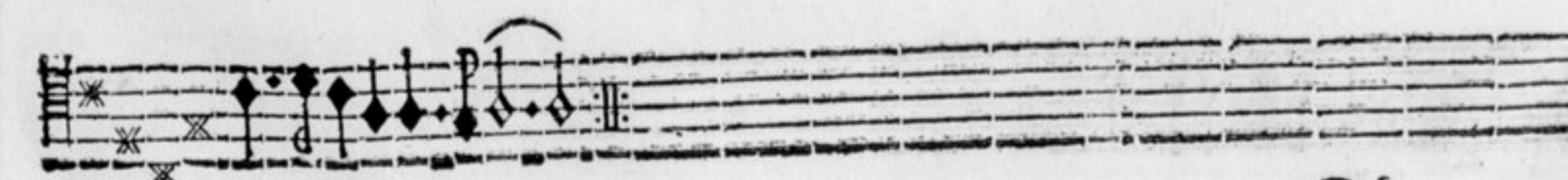
20.  **Allemanda.**



21.  **Courant,**



Piano,

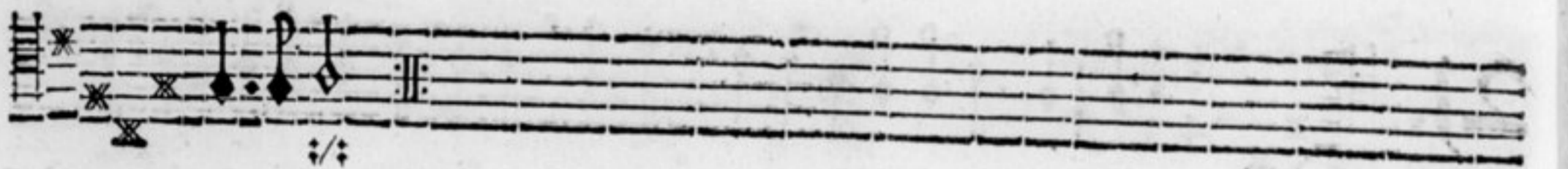


Viol. II. di Braccio.

22.  Sarabande.



23.  Gavotte.



24.  Gigue.



Piano.

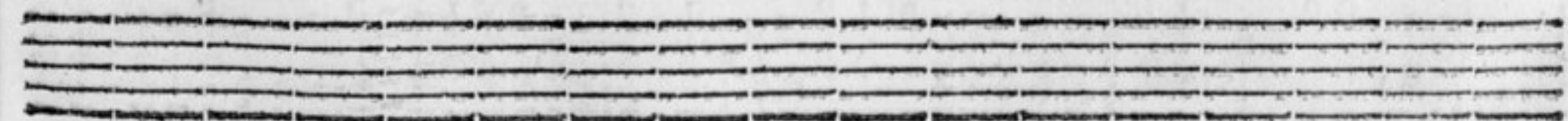
Viol. II. di Braccio.

25.

Sonata.



Adagio.



Viol. I I. di Braccio.



Allemanda.

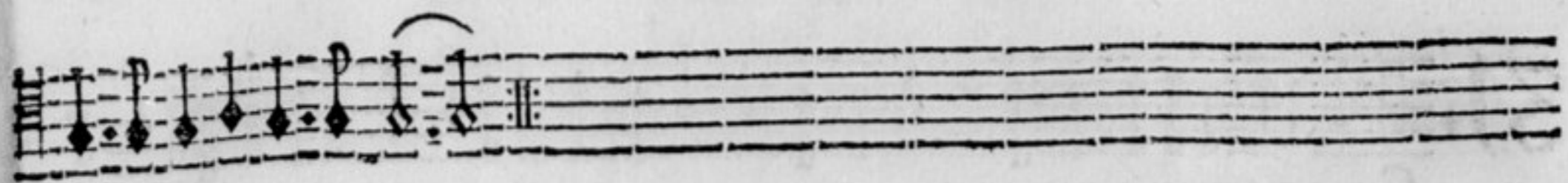


Courant.



Piano,

Viol. II. di Braccio.



28. Sarabande.

The first staff of the Sarabande piece, starting with a treble clef, a key signature of one sharp (F#), and a 3/4 time signature. It begins with a triplet of eighth notes. The piece concludes with a repeat sign.

29. Gavotte.

The first staff of the Gavotte piece, starting with a treble clef, a key signature of one sharp (F#), and a common time signature (C). It begins with a quarter note followed by eighth notes. The piece concludes with a repeat sign.

30. Gigue.

The first staff of the Gigue piece, starting with a treble clef, a key signature of one sharp (F#), and a 3/4 time signature. It begins with a triplet of eighth notes. The piece concludes with a repeat sign.

Viol. II. di Braccio.

31. 

Sonata.





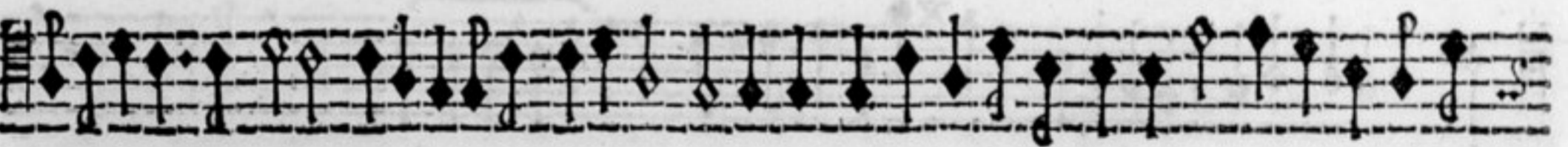








Adagio.





Allegro.



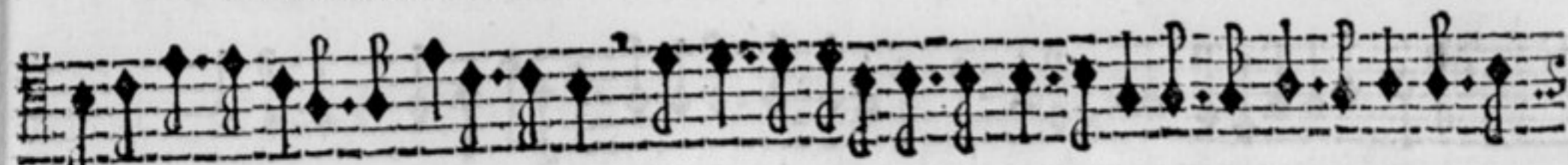
Viol. II. di Braccio.



Adagio.



32. Allemanda.



33. Courant.

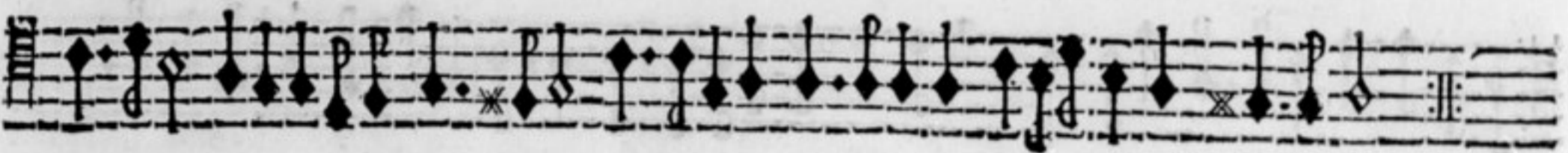


Viol. II. di Braccio.

34.  Sarabande.



35.  Gavotte.



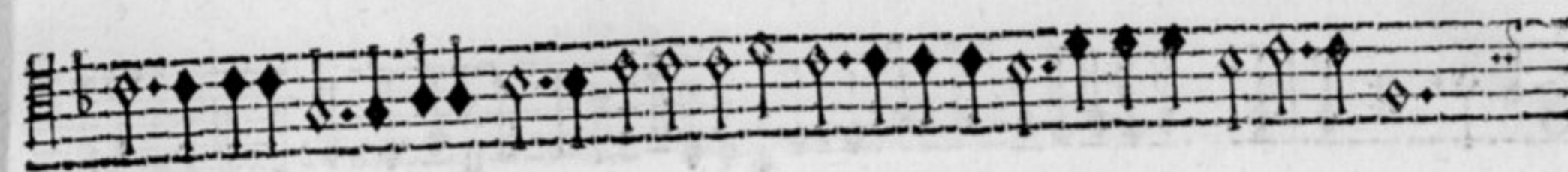
36.  Gigue.



37.  Sonata.



Viol. II. di Braccio.



Piano,

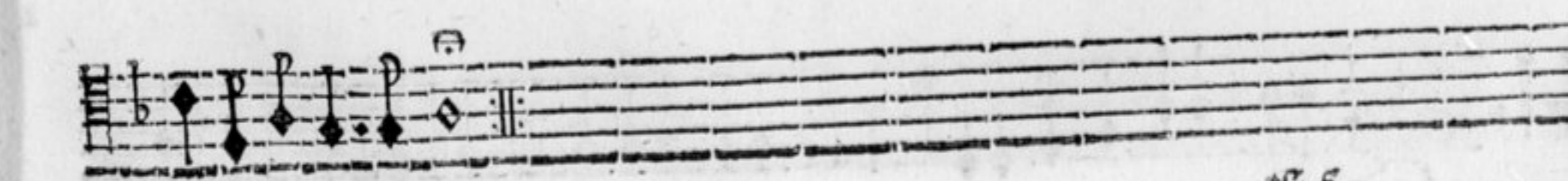
Adagio.



Allegro.



Lente.



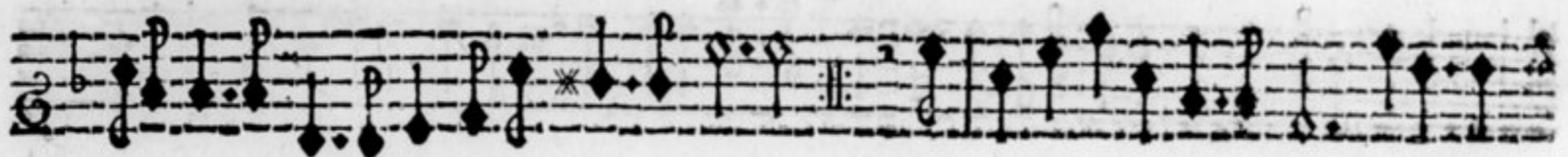
ff

Viol. II. di Braccio.

38.  **Allemanda.**



39.  **Courant.**



40.  **Saraband.**

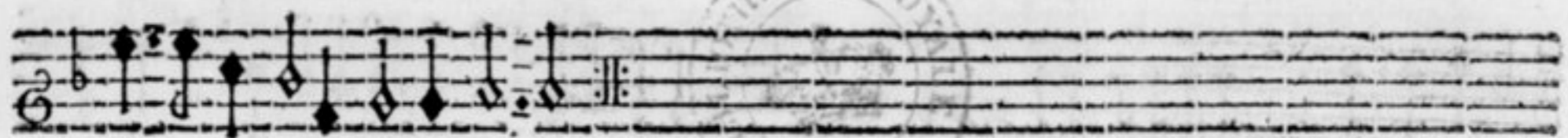


41.  **Gavotte.**

Viol. II, di Braccio.



Gigve.



Sonata.



Viol. II, di Braccio,



Piano,

Adagio,

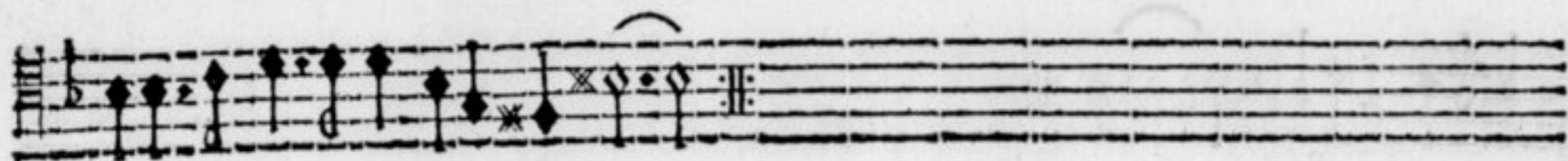


44. Allemanda.



Viol. II. di Braccio.

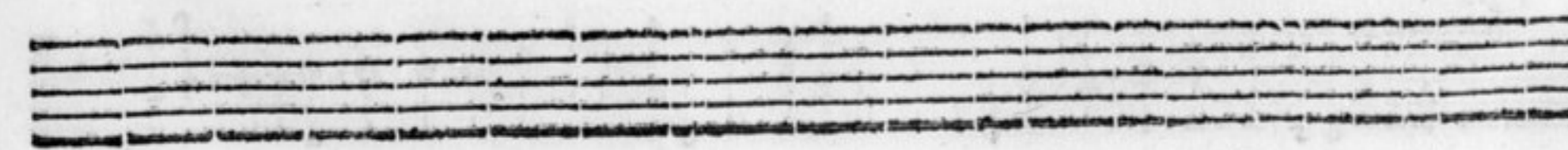
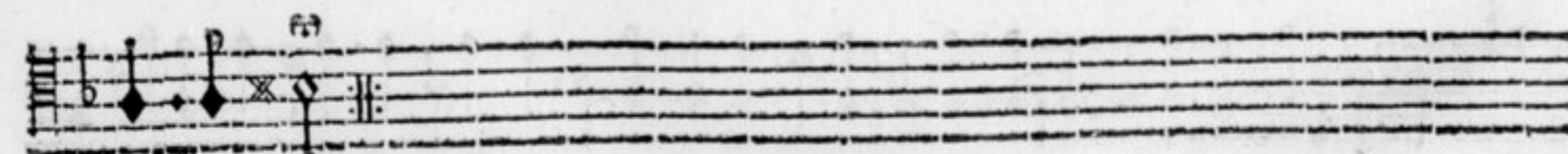
45.  Courant.




46.  Saraband.



47.  Gavotte.



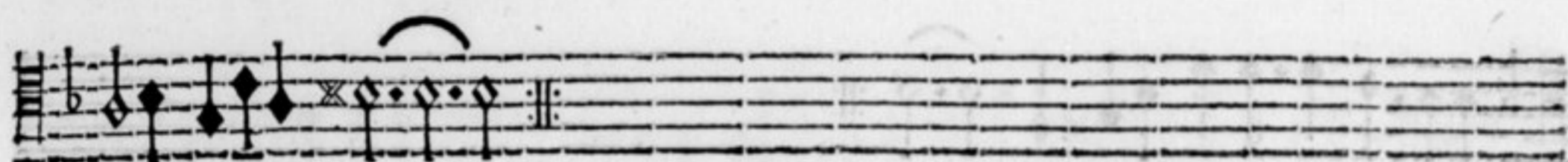
Viol. II. di Braccio.

48.  Musical staff 1 for piece 48, starting with a treble clef, a key signature of one flat (B-flat), and a 3/4 time signature. The staff contains a sequence of notes and rests, including a triplet of eighth notes.

Gigue.

 Musical staff 2 for piece 48, continuing the melody from the first staff.

 Musical staff 3 for piece 48, continuing the melody.

 Musical staff 4 for piece 48, ending with a double bar line and repeat dots.

49.  Musical staff 1 for piece 49, starting with a treble clef, a key signature of one flat (B-flat), and a common time signature (C). The staff contains a sequence of notes and rests, including a half note and a quarter note.

Sonata.

Adagio.

 Musical staff 2 for piece 49, continuing the melody.

 Musical staff 3 for piece 49, continuing the melody.

 Musical staff 4 for piece 49, continuing the melody.

 Musical staff 5 for piece 49, continuing the melody.

 Musical staff 6 for piece 49, ending with a double bar line and repeat dots.

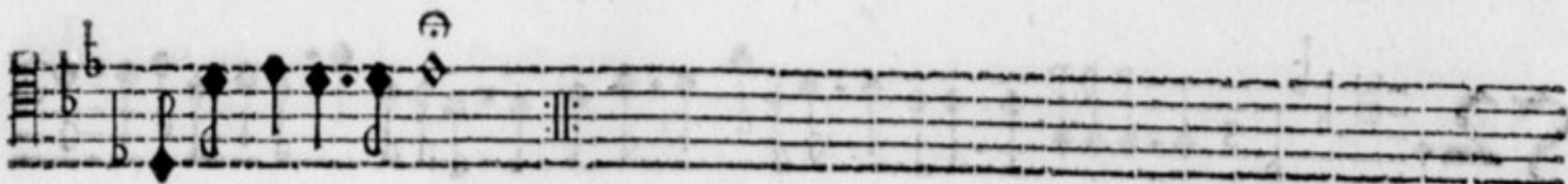
Viol. II. di Braccio.



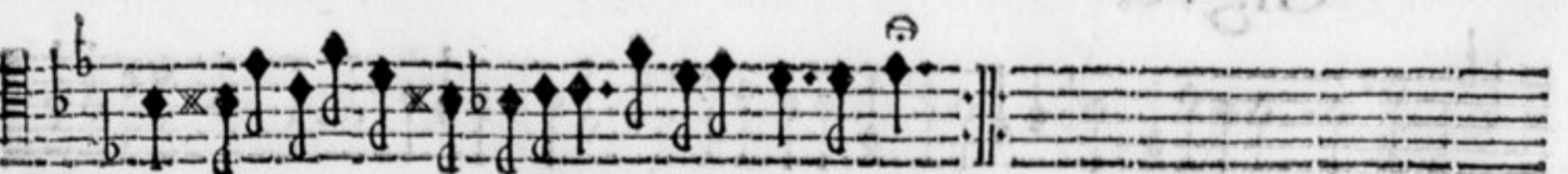
Piano,



Adagio.



Allemanda,



Courant.



Segue Verte.

Viol. I. di Braccio,



Sarabande,



Gavotte,

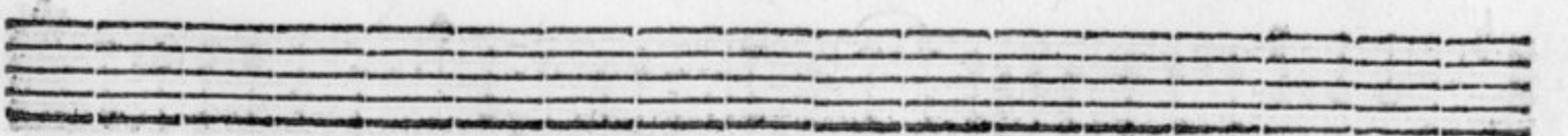
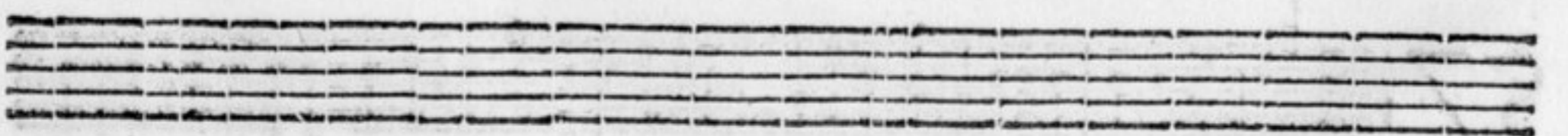


Gigue,



Viol. II. di Braccio.

32.  Sonata.



Viol. II. di Braccio.

Adagio.

The first staff of music for the Adagio section. It begins with a treble clef, a key signature of one flat (B-flat), and a common time signature (C). The melody consists of a series of eighth and sixteenth notes, with some rests. The tempo marking 'Adagio.' is written below the staff.

The second staff of music for the Adagio section, continuing the melody from the first staff. It features similar rhythmic patterns and includes some dynamic markings like 'p' (piano).

The third staff of music for the Adagio section, continuing the melody. It includes a repeat sign (double bar line with two dots) and a fermata over the final note.

The fourth staff of music for the Adagio section, concluding the piece. It features a repeat sign and a fermata over the final note.

56.

Allemanda.

The fifth staff of music, marking the beginning of the Allemanda section. It starts with a treble clef, a key signature of one flat, and a common time signature. The tempo marking 'Allemanda.' is written below the staff.

The sixth staff of music for the Allemanda section, continuing the melody. It includes dynamic markings like 'p' and 'f' (forte).

The seventh staff of music for the Allemanda section, continuing the melody. It includes dynamic markings like 'p' and 'f'.

The eighth staff of music for the Allemanda section, concluding the piece. It features a repeat sign and a fermata over the final note.

57.

Courant.

The ninth staff of music, marking the beginning of the Courant section. It starts with a treble clef, a key signature of one flat, and a common time signature. The tempo marking 'Courant.' is written below the staff.

The tenth staff of music for the Courant section, continuing the melody. It includes dynamic markings like 'p' and 'f', and a repeat sign.

Viol. II. di Braccio.



58. Sarabande.

A musical staff for a Sarabande, starting with a treble clef, a key signature of one flat (F major), and a 3/4 time signature. It features a melodic line with a fermata at the end.

59. Gavotte.

A musical staff for a Gavotte, starting with a treble clef, a key signature of one flat (F major), and a common time signature. It features a melodic line with a fermata at the end.

60. Gigue.

A musical staff for a Gigue, starting with a treble clef, a key signature of one flat (F major), and a 3/4 time signature. It features a melodic line with a fermata at the end.

F I N I S.



10
11
12
13
14
15
16
17
18
19
20
21
22
23
24
25
26
27
28
29
30
31
32
33
34
35
36
37
38
39
40
41
42
43
44
45
46
47
48
49
50
51
52
53
54
55
56
57
58
59
60
61
62
63
64
65
66
67
68
69
70
71
72
73
74
75
76
77
78
79
80
81
82
83
84
85
86
87
88
89
90
91
92
93
94
95
96
97
98
99
100

F I N I S



V^m
513
2

**BASSUS
CONTINUUS.**



V^m 7. 1470