

# MENUET en DO MAJEUR

(de: Pièces de Clavecin - 1724)

Score (00':50")

pour Trompette et Orgue

Jean-Philippe Rameau (1683 - 1764)

Arr. Michel Rondeau

Allegro ♩ = 120

Trumpet in C

Organ

This system shows the first five measures of the piece. The Trumpet in C part is written in a single staff with a treble clef and a 3/4 time signature. It begins with a quarter rest, followed by a series of eighth and quarter notes. The Organ part is written in two staves (treble and bass clefs). The right hand provides harmonic support with chords and moving lines, while the left hand plays a steady bass line of quarter notes.

C Tpt.

Org.

This system covers measures 6 through 11. The C Trumpet part continues with eighth and quarter notes, ending with a dotted quarter note. The Organ part continues with its characteristic harmonic accompaniment, featuring a mix of chords and moving lines in both hands.

C Tpt.

Org.

Fine

Fine

This system contains the final four measures of the piece, from measure 12 to 15. The C Trumpet part concludes with a quarter note followed by a repeat sign and a final eighth-note phrase. The Organ part also concludes with a quarter note, followed by a repeat sign and a final eighth-note phrase. Both parts end with a double bar line and the word "Fine".

MENUET en DO MAJEUR - Rameau - Score

C Tpt.

18

Org.

Detailed description: This system contains measures 18 through 23. The C Tpt. part (top staff) features a melodic line with eighth and sixteenth notes, including a sharp sign on the fifth measure. The Organ part (bottom two staves) provides harmonic support with chords and a bass line. Measure numbers 18, 19, 20, 21, 22, and 23 are indicated at the start of their respective measures.

C Tpt.

24

Org.

Detailed description: This system contains measures 24 through 28. The C Tpt. part (top staff) is mostly silent, with a single note in measure 28. The Organ part (bottom two staves) continues with a rhythmic pattern of eighth notes and chords. Measure numbers 24, 25, 26, 27, and 28 are indicated at the start of their respective measures.

C Tpt.

29

Org.

D.C. al Fine

Detailed description: This system contains measures 29 through 33. The C Tpt. part (top staff) has a melodic line ending with a sharp sign in measure 31. The Organ part (bottom two staves) concludes with chords and a final bass line. The instruction "D.C. al Fine" appears in both staves at the end of the system. Measure numbers 29, 30, 31, 32, and 33 are indicated at the start of their respective measures.

# MENUET en DO MAJEUR

(de: *Pièces de Clavecin - 1724*)

pour Trompette et Orgue

## Trompette en La

Jean-Philippe Rameau (1683 - 1764)

Arr. Michel Rondeau

Allegro ♩ = 120

7

3

16

Fine

23

3

D.C. al Fine

# MENUET en DO MAJEUR

(de: *Pièces de Clavecin - 1724*)

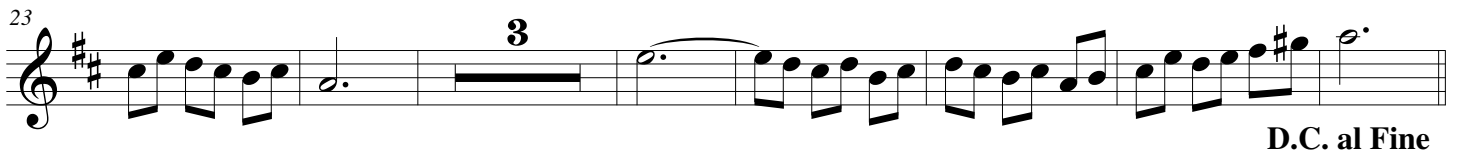
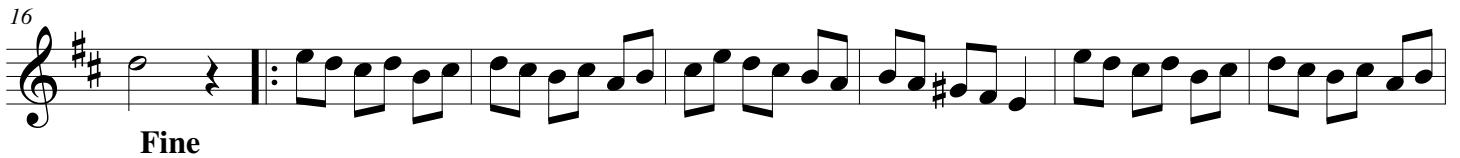
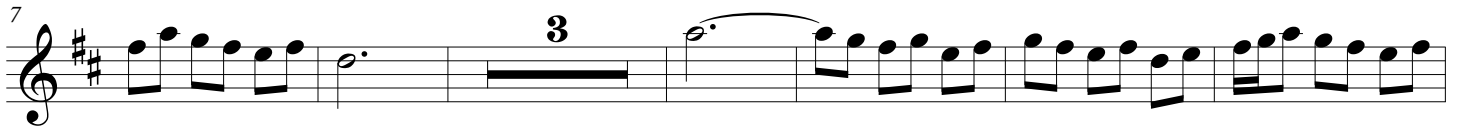
pour Trompette et Orgue

Trompette en Si $\flat$

Jean-Philippe Rameau (1683 - 1764)

Arr. Michel Rondeau

Allegro ♩ = 120



# MENUET en DO MAJEUR

(de: *Pièces de Clavecin - 1724*)

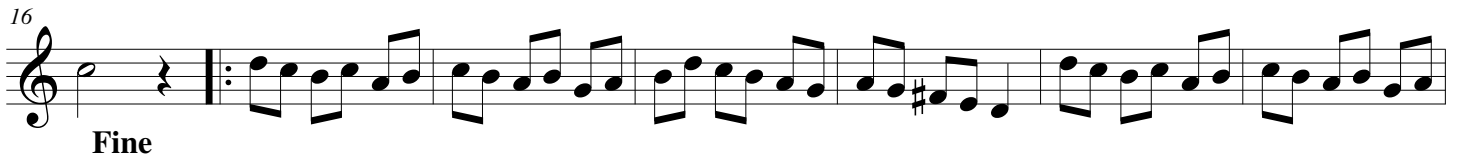
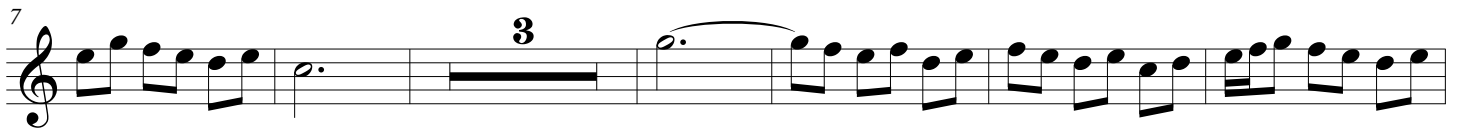
pour Trompette et Orgue

## Trompette en Do

Jean-Philippe Rameau (1683 - 1764)

Arr. Michel Rondeau

Allegro ♩ = 120



# MENUET en DO MAJEUR

(de: *Pièces de Clavecin - 1724*)

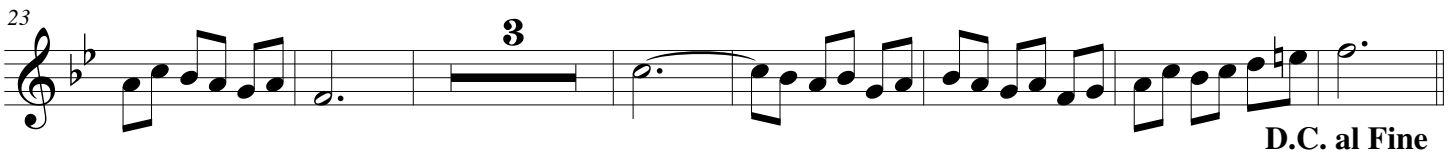
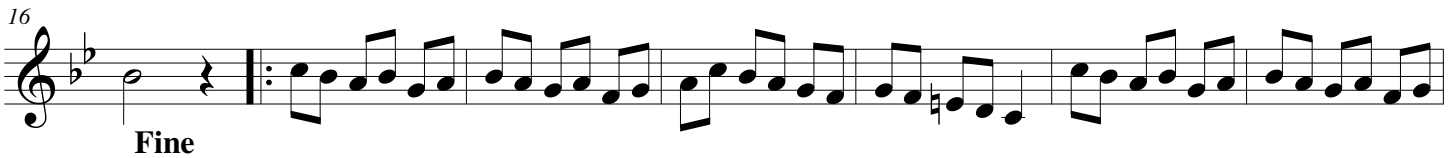
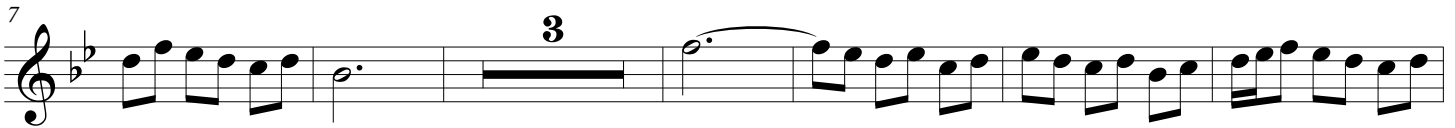
pour Trompette et Orgue

## Trompette en Ré

Jean-Philippe Rameau (1683 - 1764)

Arr. Michel Rondeau

Allegro ♩ = 120



# MENUET en DO MAJEUR

(de: Pièces de Clavecin - 1724)

pour Trompette et Orgue

## Orgue

Jean-Philippe Rameau (1683 - 1764)

Arr. Michel Rondeau

Trumpet in C

Allegro ♩ = 120

C Tpt.

Org.

C Tpt.

Fine

Fine

MENUET en DO MAJEUR - Rameau - Orgue

C Tpt.

Org.

18

Detailed description: This system covers measures 18 to 23. The C Tpt. part (top staff) features a melodic line with eighth and sixteenth notes, including a sharp sign on the fifth measure. The Org. part (bottom two staves) provides harmonic support with chords and moving bass lines.

C Tpt.

Org.

24

Detailed description: This system covers measures 24 to 28. The C Tpt. part (top staff) is mostly silent, with a single note in measure 28. The Org. part (bottom two staves) continues with rhythmic patterns and chordal accompaniment.

C Tpt.

Org.

29

D.C. al Fine

D.C. al Fine

Detailed description: This system covers measures 29 to 33. The C Tpt. part (top staff) has a melodic line that ends with a sharp sign in measure 33. The Org. part (bottom two staves) concludes with a final chord and bass line. The instruction 'D.C. al Fine' appears in both parts.